

The Prince George Agricultural and Historical Association
presents the 2022 BCNE

Home Arts and Horticulture Prize Book

Pioneer Days to
Modern Ways



August 18th – August 21st

Contact Information

Board of Directors:

President: Aimee Alspaugh
1st Vice President: Caroline Perrin
2nd Vice President: Lee-Ann Mowbray
Treasurer: Karlee Besse
Secretary: Tracy Arrowsmith
Director: Amy Heise
Director: Liam Beck
Director: Tanis Forgues

Home Arts & Horticulture Section Chairs:

Quilt Fair: Quilters Guild
Honey Section: PG Beekeepers Association
Recycling Section: REAPS – (250) 561-7327
Photography Section: PG Photographic Society
Horticulture Section: David Douglas – Botanical Garden Society



Sponsored by Prince George Agricultural and Historical Association
Celebrating 110 Year of the BCNE
August 18th – 21st 2022
Exhibition Park, Prince George BC

General Manager:

Sylvia Layzell (250) 563-4096

Office Hours:

July to August: Monday to Friday 8am – 4pm
Before July, please check the website www.bcne.ca or phone our office (250) 563-4096
The office is closed on all statutory holidays.

Table of Contents

Definitions:	4
Rules and Regulations:	5
Entry Fees:	7
Registration and Entry:	7
Prize Money:	7
Section Guidelines and Judging Criteria – Home Arts:	8
Section Guidelines and Judging Criteria – Horticulture:	13
Youth in Agriculture Guidelines:	16
Preschool:	17
Junior:	17
Youth:	19
Teen:	20
Youth in Agriculture:	22
Adult/Senior:	22
Specialty Section:	30
Entry Form:	31

Definitions

“Prince George Agricultural and Historical Association (PGAHA)” – the not-for-profit organization governed by a volunteer board of directors that sponsors the annual British Columbia Northern Exhibition (BCNE), formerly the Prince George Exhibition (PGX)

“Home Arts & Horticulture (H&H Division)” – Home Arts and Horticulture are both divisions of the BCNE. The two are recognized together as Home Arts and Horticulture (H&H Division)

“H&H Director/Chair” – the person or people appointed and carrying authority to all things references with the H&H Division, on behalf of the Board of Directors of the PGAHA

“H&H Section Chair” – the person or people appointed to coordinate a specific Home Arts & Horticulture section

“Youth in Agriculture” – the PGAHA’s mission is to educate and engage Youth, as to the significance and contribution of all aspects of Agriculture, for the benefit of healthy communities and the environment. This section is for the youth to submit entry items for the chance to win a trophy.

“Section” – the categories within the H&H Division. For example: eggs, honey, crochet/knitting etc.

“Class” – the areas of competition within each section
Such as Section 40: Eggs Class 40-A Eggs – White (6 units)

“Entry/Entry Item” – the item, article or works (i.e. canned jams, cut flowers or picture) that is entered into a particular class in a section

“Exhibitor” – a person entering an entry item into a class

“Registration” – when an entry item is registered using the appropriate entry form and the entry fee has been paid

“Post Entry” – items entered past the specified deadline dates as indicated in this book will not be eligible for judging and prize awards, unless approved by the H&H Director/Chair

Rules and Regulations

Please Read Carefully!

1. The deadline for **Home Arts & Horticulture** entries is Thursday August 4th, 2022, by 4pm.
Important: Do not bring actual Entry Item(s) at this time – only the Entry Form at this time.
2. The deadline for **Youth in Agriculture** entries is Thursday August 4th, 2022, by 4pm.
3. The entry fee must be paid when the entry form is submitted to the PGAHA. Accepted payment types are cash, debit, or credit card. Entry forms may be downloaded at www.bcne.ca or found within this Prize Book.
4. Entry fees will not be refunded.
5. Two entries may be submitted in any one class by the same person unless otherwise stated in a particular section; two entries in a class require two entry fees.
6. Please check all class numbers carefully and give an adequate description of the article. Entries placed in incorrect categories cannot be judged.
7. All entries must be the work of the exhibitor and entered under the name of the exhibitor, otherwise entry item(s) will be disqualified. Entries must not have been previously entered into the BCNE for judging.
8. All food entry item(s) must be on a disposable container and covered in plastic wrap.
9. Picture and photographs must be mounted as specified in the photography section. See the Photography section on page 11 for further rules and guidelines.
10. All Preschool, Youth, Junior, and Teen entries must have the exhibitor's age visible for the judge.
11. Entries into the Home Arts & Horticulture Division are accepted from individuals, organizations or businesses.
12. In the case of an organization or business, entry forms must include the name of an individual as well as the body that individual represents. Prize monies, prizes, awards and/or ribbons will be awarded in the name of the individual entering on behalf of the organization or business that they represent.
13. There are to be no commercial sales of entry items. Note: There may be Vendors that will be set up near the H&H Division area and they may sell items from their paid space.
14. Please carefully check the drop off dates and times for all entries. These are clearly stated on the Registration and Entry page 7.
15. Entry items are shown at the owner's risk. The PGAHA Directors and Staff will not be responsible for any loss or damage. Exhibitors requiring insurance must give the matter their personal attention.
16. Entry items may be entered "For Exhibit Only", upon approval of the H&H Director/Chair. Any such entry item will not be entitled to a cash prize and will not be judged.
17. Admission and Parking: Exhibitors for Home Arts & Horticulture must park in designated areas only when delivering items to be judged.

18. In the absence of competition in any class or if entries exhibited are of inferior quality; the judges will award only such prizes as they deem the entry item merits.
19. Any person interfering with, or attempting to influence the judges, or who on the Exhibition Grounds, use abusive language as to the award made, shall forfeit their right to any prize money to which they would otherwise have been awarded.
20. The Judge's decision is final.
21. All prize money will be available for pick up at the PGAHA Office from Thursday August 18th at 5pm until Sunday August 21st at 12pm (noon), or during office hours the week following the fair. Note: To pick up prize money during the BCNE operating hours, a gate fee will need to be paid in order to enter the grounds.
22. All prize money cheques must be cashed by Saturday October 29th, 2022. All outstanding cheques at this time will be cancelled and new cheques will not be issued.
23. Special prizes offered by outside parties will be awarded if and when they are received by the Exhibition.
24. Entry items can be removed on Sunday August 21st, between 6pm – 8pm and on Monday August 22nd, between 10am – 2pm.
25. Any entry items removed before the stated times without permission from the H&H Director/Chair will forfeit prize money and the individual may be barred from future competition.
26. Entries not picked up by Friday August 26th, 2022, will be donated or disposed of at the discretion of the PGAHA.
27. Any questions that arise not covered in the Rules and Regulations will be at the decision of the H&H Director/Chair.
28. Any and all protests must be made in writing stating the grounds of the protest and accompanied by a deposit of \$10.00, which will not be refunded if the protest is deemed frivolous by the Protest Committee. No protest will be entertained regarding the merit of an entry item exhibited as the decision of the Judge or Judges on the point is final. The Protest Committee shall consist of the President, Secretary and one Director.

Entry Fees

Entry fees are to be paid per entry item submitted.

Preschool	Aged 2 – 5 Years	\$1.00
Junior	Aged 6 – 10 Years	\$1.00
Youth	Aged 11 – 14 Years	\$1.00
Teen	Aged 15 – 18 Years	\$2.00
Adult	Aged 19 – 54 Years	\$2.00
Seniors	Aged 55+	\$1.00
Challenger Group		\$1.00

- Open to persons of any age living with any form of disability
- May enter any age-appropriate classes

Registration and Entry

1. Complete your entry form.
2. Please use the Home Arts & Horticulture Entry Form for all Sections and Classes.
3. Ensure that your entry items comply with section and class criteria. PGAHA office staff can help you with selecting the appropriate section and class for your item.
4. Please note that although we have specific categories for the younger ages everyone is welcome to enter the “Adult and Senior” categories.
5. The deadline for Home Arts & Horticulture entries, as well as Youth in Agriculture entries is Thursday, August 4th, 2022, by 4pm. **Important: Do not bring actual entry item(s) at this time** – only the entry form at this time.
6. Pay the entry fee; it must accompany a completed entry form for registration to be complete.
7. Please drop your items off on the following dates:
 - a. Creative Writing entries: Thursday, August 11th, between 10am – 4pm
 - b. Photography entries: Tuesday, August 16th, between 10am – 5pm
 - c. Quilt entries: Tuesday, August 16th, between 10am – 2pm
 - d. Non-Perishable entries: Tuesday, August 16th, between 10am – 3pm
 - e. Perishable entries: Wednesday, August 17th, between 10am – 3pm

Prize Money

Prize money is stated here, unless otherwise stated in a particular section.

- 1st Place \$6.00
- 2nd Place \$4.00
- 3rd Place \$2.00

Section Guidelines and Judging Criteria

Home Arts Division

Arts and Crafts: Drawings/Painting/Sculptures/Constructions

Drawings/Paintings/2D Arts

- Two entries permitted per class
- Must be mounted on a canvas, mat board or other strong structural base; light weight frames are permitted. All pieces must have adequate means of support for hanging/standing
- All pieces must be original work, no prints are permitted. Any signatures should not be visible to the judge
- All entries are original creations made within the past two years
- No purchased kits permitted

Judging Criteria

Overall aesthetic appeal: 30%

Effective use of line, form, space, colour and texture: 15%

Appropriate content with centre of interest: 30%

Depth created through the use of perspective and proportion: 25%

Sculptures/Constructions/3D Arts

- Two entries permitted per class
- No purchased kits permitted

Judging Criteria

Level of skill: 30%

Complexity: 20%

Use of colour: 20%

Originality: 30%



Creative Writing

- One entry permitted per class
- Entries must be typed, double spaced and include a title page
- Author's full name should not be typed on the document, but initials are accepted
- No word limit on poetry
- Word limit for essays:
 - Junior and Challenger: between 150 – 750 words
 - Youth: between 500 – 1000 words
 - Teen and Adult: between 1000 – 2000 words

Judging Criteria

Writing conventions: 50%

Originality: 50%

Culinary Arts: Home Baking and Preserves

Home Baking

- Two entries permitted per class
- No commercial mixes or artificial fillings
- Pies must be placed on disposable plates and covered with clear plastic wrap
- Cakes can be placed on a cardboard cake plate
- Cookies, squares, muffins, etc. should be placed on disposable paper plates and sealed with a ziploc bag
- Provide 4 samples of each baking entry item for judging and display purposes
- Whole pies and cakes must be submitted
- Heritage cooking entry items must come with the recipe that was created prior to 1940

Judging Criteria

Size and shape: 15%

Colour: 15%

Texture: 10%

Tenderness: 10%

Taste: 25%

Aroma: 25%

Preserves

- Two entries permitted per class
- All screw tops must be loose, but seals not broken
- No wax to be used
- No cloth or paper lid covers
- Any group of exhibits or collections must be presented in a small display box
- All goods must have been preserved within the 18 months prior to the BCNE
- Jar lids to be labelled

Judging Criteria

Canned goods, dried fruits and vegetables, pickles and relishes

Pack arrangement, uniformity of size: 10%

Clearness: 10%

Labelled: 10%

Texture: 20%

Colour: 10%

Flavour: 40%

Jams and Jellies

Appearance, pack and seal: 10%

Flavour: 40%

Texture: 20%

Labelled: 10%

Colour and clearness: 10%

Evenness and distribution of fruit: 10%



Fibre Arts Spinning and Weaving

- Two entries permitted per class

Judging Criteria

General appearance: 10%

Design: 40%

Workmanship: 50%



Indigenous Arts

- Two entries permitted per class
- Please include the name of the nation that the craft represents on the tag or item

Judging Criteria

Appearance: 30%

Material: 30%

Workmanship: 40%

Needlecraft: Crochet/Knitting/Needlework/Sewing/Quilting

Crochet/Knitting

- Two entries permitted per class
- Doilies must be mounted on a staff backing that is cut to the shape of the doily
- Doll clothes should be displayed on doll

Judging Criteria

Design, colours and materials: 20%

Accurate pattern throughout: 20%

No knots, ends worked in: 20%

Edging in proportion to overall size of article: 10%

Clean/stiffened and blocked: 10%

Lay of article: 10%

Uniformly shaped and formed: 10%



Needlework

- Two entries permitted per class
- Framed handwork must be wired of hanging
- Items should be finished, clean and where appropriate, pressed
- Where appropriate, items should be equipped to be hung
- Definitions:
 - Petit Point: 20 meshes to the inch or smaller, usually worked with thread
 - Needlepoint: 14 – 18 meshes to the inch, usually worked with wool
 - Gros Point: 8 – 12 meshes to the inch, usually worked with wool
 - Quick Point: 15 – 17 meshes to the inch, usually worked with wool
 - Tapestry or Bargello: any design worked on canvas with yarn using basic needle point stitches
 - Crewel: any design worked on fabric with cotton or wool using a variety of stitches
 - Cross Stitch: 11 – 14 count fabric

Judging Criteria

Appearance: 20%

Finished strands of thread or wool: 20%

Transfer designs covered: 20%

Stitching appropriate for article: 10%

Stitches even and superbly finished: 20%

Picture mounting and framing: 10%

Sewing

- Two entries permitted per class
- Be clean and pressed
- Clothing items must be on a hanger



Judging Criteria

Function: 20%

Design: 20%

Technique: 25%

Craftsmanship: 35

Quilting

- Open limit on entries
- If work bears a signature, it should be on the back of the quilt
- Entry must be clean
- Entry must come with a minimum 2" "sleeve" for hanging
- Prizes and payouts for winning "Viewer's Choice" competitions will be stated and are in lieu of regular prize money payouts
- Consider for your entries:
 - Choice and use of patterns for top and borders
 - Choice and use of quilting patten
 - Colours harmonious
 - Originality of design or use of traditional design of material relative to design and function
 - Precision of construction of top quilting techniques
 - Precision and finishing of binding/edges and backing

Judging Criteria

General Appearance: 10%

Design: 40%

Workmanship: 50%

Photography

This section is sponsored and judged by
The Prince George Photographic Society

- Two entries permitted per class
- See page 7 for date and time to deliver entry for judging
- General Entry Rules:
 - Eligible photos must be taken within the previous 12 months
 - Eligible photos may not have been previously entered for judging at the BCNE
 - Exhibitors must be non-professionals, except in the Open "People's Choice" classes
 - Each submitted photo requires a title
 - Submitted photos must be 8" by 10" in size.



- Mount material should provide a stiff base to support and be no thicker than ¼". Mat board or foam core may be used. Mount board may be up to 11" by 14" in size. The photo can be glued directly to the surface of the mount board or mounted in a commercially available cardboard mat. NO FRAMES ARE ALLOWED.
- Include your name and address on the top right-hand corner of the back of each mounted photo.
- Attach the entry tag to either the top front left or right corner of the mount board mat.

Judging Criteria

Presentation:	Finishing touches; style; cropping; application of enhancements.
Impact:	What you see first; relevance of title; strong feeling of power; holds your eye; story-telling ability.
Creativity:	Use of imagination; originality; freshness of approach; unusual cropping/use of subject matter; invention, design, feeling and imagination that lifts the work into the realm of art; could be abstract.
Style:	This sets the work apart from others; different approach; real, not contrived; experimental/individualistic.
Composition:	Good placement of subject matter/center of interest; successful arrangement; leading lines; harmonious proportions; dynamic symmetry for placement of most important objects; good rhythm in repetition of colour, spaces, moods, division of photograph.
Colour Balance:	Use of lighting; good selection of colour for subject matter; using very interpretive colour (may not be normal); creative use of colour (complementary colours, dark against light, strong against weak).
Center of Interest:	Focus of subject matter/grouping of subject matter, arrangements of objects. Subjects holds eye without distraction. Moody, misty, strength and definition give subject interest. Secondary subjects do not overpower main subject. Lighting should be controlled or used to enhance or subdue subjects.
Technique:	Creative use of camera angle, choice of lenses (macro/portrait/infinity), control of lighting (reflected, back, window, colour); placement of subject.
Print Quality:	Proper balance of lights and darks for the subject matter; considerations to saturation, reds, greens, blues in proper depiction of true colours of the subject matter or for artistic design.

Recycling

This section is sponsored and judged by
The Recycling and Environmental Action Planning Society

- Two entries permitted per class

Judging Criteria

General appearance: 30%
Material: 30%
Workmanship: 40%

Wood Craft

- Two entries permitted per class

Judging Criteria

General appearance: 30%
Workmanship: 40%
Material: 30%



Section Guidelines and Judging Criteria

Horticulture Division

Eggs

- Two entries permitted per class
- Eggs must be produced by the exhibitor's own birds
- Bring six eggs for each egg class
- Bring entries in suitable, inexpensive container



Judging Criteria

Uniform colouration, shape and size: 40%

Shell quality and texture: 20%

Yolk quality: 15%

Interior Colour: 15%

Albumen Quality: 10%

Field Crops

- Two entries permitted per class
- Exhibits to be free from disease and weeds
- Exhibits to be neat and tidy in appearance
- Seed samples should be dry, well ripened, uniform in size and bright in colour
- Sheaves to be tied in two places, top tie just below heads, sheaf no more than 30" in length, 4" in diameter at top tie
- Sheaves may be dry or fresh
- Forage samples should be of good colour, not overly mature and well prepared for show
- All exhibits to bare correct name of variety
- Exhibits can be from previous year's crop

Judging Criteria

Bales

Stage of maturity: 30%

Freedom from foreign material: 20%

Leafiness, soundness and curing: 40%

General appearance: 10%

Collection

Neatness: 20%

Number of varieties and naming: 25%

Utility: 25%

Quality: 35%

Grain

Freedom from foreign material: 40%

Maturity and soundness: 35%

Plumpness and uniformity: 15%

General appearance: 10%

Sheaves

Freedom from foreign material: 30%

Soundness and lustre: 25%

Neatness: 15%

Maturity and filling of hear: 30%



Silage

Leaf content: 25%
Colour and odour: 30%
Texture: 25%
Uniform length: 20%



Sliver

Maturity and filling: 30%
Freedom from foreign material: 30%
Soundness and lustre: 20%
Neatness and arrangement: 20%

Flowers

- Two entries permitted per class
- Bring four examples of each species of flower or plant
- Bring entries in suitable, inexpensive and stable containers
- Be sure to have plenty of water in your container
- Children must do their own arranging
- Cut Flowers – Annuals and Perennials
 - Remove leaves below water line
 - Same variety but colour variation is allowed
 - Consistency in size, shape and quality. Remove buds
 - Same number of blooms on each stem preferred
 - Maximum height is 24"



Judging Criteria

Uniformity, proper maturity: 30%
Stem & Foliage: strength, straightness, quality: 30%
Free from bruise or blemish: 20%
Colour: 20%
Labelled: 10%
Extra points given if variety is labelled

Fruit

- Two entries permitted per class
- Bring four examples of each species unless otherwise stated
- Displayed on plain white paper plates
- Stems are to be left on tree fruit if possible
- Free of disease and insects

Judging Criteria

Appropriate shape: 30%
Samples of same variety uniform size: 30%
Free of scab: 10%
Colour: 20%
Labelled: 10%



Honey

- Two entries permitted per class
- All exhibits must be the product of the producer
- Entries to be submitted in appropriate container

Judging Criteria

Beeswax

Colour: 45%

Cleanliness: 35%

Uniformity and appearance: 20%

Creamed Honey

Appearance and uniformity of containers: 25%

Firmness/texture of set: 30%

Freedom from foreign material: 15%

Flavour and aroma: 10%

Texture of granulation: 20%

Frames - Honey

Cleanliness of frame: 40%

Completeness of fill: 60%



Liquid Honey

Appearance and uniformity of containers: 50%

Freedom from crystals: 15%

Density: 15%

Aroma: 5%

Freedom from foreign materials and air bubbles: 15%

Vegetables

- Two entries permitted per class
- Entries must have been grown for the 2021 or 2022 growing season
- Bring four examples of each species unless otherwise stated
- To be displayed on plain white paper plates, except for rhubarb and zucchini
- Scales and stalks should be left on when applicable, except as indicated
- Label varieties
- Entry must be free of disease and insects

Judging Criteria

Appropriate shape: 30%

Uniform size: 30%

Free of scab: 15%

Colour: 15%

Labelled: 10%

Youth in Agriculture Guidelines

Guidelines

- The goal is to receive as many points as you can for this section because the youth with the most points wins the trophy!
- Points are distributed as follows for each class
 - 1st place – 6 points
 - 2nd place – 4 points
 - 3rd place – 2 points
- One entry permitted per class and youth can submit entry items in every class for this section
- Example of potential points:
 - Youth 1 submits an entry in only one class and receives 1st place. They receive a total of 6 points.
 - Youth 2 submits an entry in three classes and receive 2nd, 3rd and 3rd respectively. They receive a total of 8 points.
 - In this example, Youth 2 would win the trophy as they collected a total of 8 points.

Judging Criteria

See corresponding judging criteria in the above Home Arts and Horticulture Guidelines.

Prizes

Age Group 8 – 11

1st Place Name on BCNE Trophy
 Take Home Trophy

2nd Place Ribbon

3rd Place Ribbon

Age Group 12 – 15

1st Place Name on BCNE Trophy
 Take Home Trophy

2nd Place Ribbon

3rd Place Ribbon

Preschool Ages 2 – 5

Home Arts and Horticulture Division

Please see pages 8 to 15 for the Home Arts and Horticulture Division section guidelines and judging criteria

Section 01 – All Preschool Classes

- 01-A Lego Build
- 01-B Handmade Sock Puppet
- 01-C Finger Painting – maximum size 30cm by 30cm
- 01-D Sculpture of your Pet
- 01-E Colouring Page
- 01-F Wildflower Arrangement in a Fun Container
- 01-G No Bake Squares or Cookies
- 01-H Slime



Junior Ages 6 – 10

Home Arts Division

Please see pages 8 to 12 for the Home Arts Division section guidelines and judging criteria

Section 02 – Arts and Crafts

- 02-A Coloured Drawing
- 02-B Water Colour Painting
- 02-C Poster “Pioneer Days to Modern Ways” – show the progression of time for anything of your choice
- 02-D Lego Build
- 02-E Junk Sculpture – use only recycled materials to make something beautiful
- 02-F Hand Painted Pocket Rock



Section 03 – Creative Writing

- 03-A Short Story – write about your favourite part of the BCNE
- 03-B Poem – write a rhyming poem about your favourite ride or game at the BCNE

Section 04 – Culinary Arts – Home Baking

Present 4 entry samples for each class for presentation and judging

- 04-A Tarts
- 04-B Chocolate Chip Cookies
- 04-C Baked Squares
- 04-D Muffins



Section 05 – Needlecraft

- 05-A Sewn Stuffed Animal
- 05-B Hand Sewn Article
- 05-C Machine Sewn Article
- 05-D Quilted Article

Section 06 – Indigenous Art

- 06-A Drawing
- 06-B Medicine Bag Pouch – leatherwork and colourful beads
- 06-C Dreamcatcher

Section 07 – Photography

- 07-A Playground Fun – a picture of your family having fun on a playground
- 07-B My Pet – a picture of your pet
- 07-C Scenery – a picture of your favourite place

Junior Ages 6 – 10 Horticulture Division

Please see pages 13 to 15 for the Horticulture Division section guidelines and judging criteria

Section 08 – Flowers

- 08-A Sunflower
- 08-B Wildflowers in a Boot
- 08-C Flower Bouquet
- 08-D Single Bloom

Section 09 – Fruits and Vegetables

Present 4 entry samples for each class for presentation and judging unless otherwise specified

- 09-A Radishes
- 09-B Silliest Potato
- 09-C Biggest Zucchini
- 09-D Fruit & Veggie Sculpture
- 09-E Basket of Fruits & Vegetables – minimum of three types of fruits and/or vegetables



Youth Ages 11 – 14

Home Arts Division

Please see pages 8 to 12 for the Home Arts Division section guidelines and judging criteria

Section 10 – Arts and Crafts

- 10-A Original Cartoon Strip
- 10-B Acrylic/Oil Painting – maximum size 11” by 14”
- 10-C Coloured Drawing
- 10-D Pottery
- 10-E Lego Build
- 10-F Junk Sculpture – use only recycled materials to make something beautiful
- 10-G Fairy Door – create a small portal to set out in your garden or backyard

Section 11 – Creative Writing

- 11-A Poem – write a rhyming poem – minimum of 8 lines
- 11-B Short Story – share a good deed that you have done or witnessed

Section 12 – Culinary Arts Home Baking

Present 4 entry samples for each class for presentation and judging unless otherwise specified

- 12-A Fruit Pie
- 12-B Cookies
- 12-C Fusion Muffins – combine two flavours into one muffin
- 12-D Homemade Trail Mix – must provide ingredients used
- 12-E Heritage Cooking – from a recipe created before 1940
- 12-F Gift Basket – four of your favourite items in a nice gift basket

Section 13 – Indigenous Art

- 13-A Beading
- 13-B Indigenous Design Painting
- 13-C Leatherwork
- 13-D Drum

Section 14 – Needlecraft

- 14-A Knitted or Crocheted Article
- 14-B Hand Sewn Article
- 14-C Machine Sewn Article
- 14-D Quilted Article



Section 15 – Photography

- 15-A Nature – a picture of a natural setting
- 15-B Old Things – a picture of an old building, car, etc.
- 15-C Water Fun – a picture of fun at the pool, lake, etc.

Youth Ages 11 – 14

Horticulture Division

Please see pages 13 to 15 for the Horticulture Division section guidelines and judging criteria

Section 16 – Flowers

- 16-A Cacti Garden – minimum of 2 cacti
- 16-B Blooms in a Teacup
- 16-C Dahlia Bouquet
- 16-D Mini Terrarium – small habitat in a small glass container

Section 17 – Fruits and Vegetables

Present 4 entry samples for each class for presentation and judging unless otherwise specified

- 17-A Carrots – any kind
- 17-B Squash – any kind
- 17-C Potatoes – any kind
- 17-D Garlic – cut stems to 6” and trim roots to ½”
- 17-E Curviest Cucumber
- 17-F Basket of Fruits & Vegetables – minimum of three types of fruits and/or vegetables

Teen Ages 15 – 18

Home Arts Division

Please see pages 8 to 12 for the Home Arts Division section guidelines and judging criteria

Section 18 – Arts and Crafts

- 18-A Pencil Drawing
- 18-B Sculpture
- 18-C Portrait
- 18-D Lego Build
- 18-E Scarecrow – less than six feet tall and be able to stand on its own

Section 19 – Creative Writing

- 19-A Haiku Poem
- 19-B Essay – “History of the Traditional Fall Fair”
- 19-C Poem – write a rhyming poem about “My Horse Steve” – minimum of 8 lines

Section 20 – Culinary Arts Home Baking

- 20-A Quick Loaf Bread
- 20-B Fusion Pie – combine two flavours in one pie
- 20-C Decorated Mini Cupcakes – four entry samples to be presented
- 20-D Trail Mix – with a list of all ingredients used
- 20-E Heritage Cooking – from a recipe created before 1940

Section 21 – Indigenous Art

- 21-A Drawing
- 21-B Carving
- 21-C Button Blankets

Section 22 – Needlecraft

- 22-A Cinderella Piece – any kind of needlecraft
- 22-B Superhero Piece – any kind of needlecraft
- 22-C Household Item – any kind of needlecraft
- 22-D Quilted Item

Section 23 – Photography

- 23-A Monochrome Photo
- 23-B Pinhole Photo
- 23-C Panorama



Teens Ages 15 – 18 Horticulture Division

Please see pages 13 to 15 for the Horticulture Division section guidelines and judging criteria

Section 24 – Flowers

- 24-A Sunflower
- 24-B Fairy Garden – the home you grew for your fairy folk
- 24-C Terrarium
- 24-D Flowers in a Fun Container

Section 25 – Fruits and Vegetables

Present 4 entry samples for each class for presentation and judging unless otherwise specified

- 25-A Tomatoes – any kind
- 25-B Apples – any kind
- 25-C Basket of Fruits & Vegetables – minimum of three types of fruits and/or vegetables



Youth in Agriculture

Ages 8 – 11 and Ages 12 – 15

Please see pages 16 for the Youth in Agriculture section guidelines and judging criteria

Section 26 – Youth in Agriculture

- 26-A Garden in a Recycled Container
- 26-B Quilted Item
- 26-C Sculptured Vegetables
- 26-D Tart
- 26-E Scrapbook Page:
- 26-F Functional item made from duct tape
- 26-G Poem – “The Barn” – any style
- 26-H Photograph of the Farm
- 26-I Sandwich Board “Farm to Table”
- 26-J Pottery
- 26-K Story – “A Day on the Farm” – minimum of 150 words for 8 – 11 and 300 words for 12 – 15

Adult 19 – 54 Years and Seniors 55+

Home Arts Division

Please see pages 8 to 12 for the Home Arts Division section guidelines and judging criteria

Section 27 – Arts and Crafts

- 27-A Dry Medium Piece
- 27-B Liquid Medium Piece
- 27-C Oil Painting
- 27-D Acrylic Painting
- 27-E Watercolour Painting
- 27-F Cement Steppingstone
- 27-G Creative Flower Planters
- 27-H Wind Chimes
- 27-I Pottery
- 27-J Painted Rock
- 27-K Lego Build
- 27-L Bedazzled Piece of Clothing



Section 28 – Culinary Arts Home Baking

Present 4 entry samples for each class for presentation and judging unless otherwise specified.

Bread and Buns

- 28-A White Loaf
- 28-B Multigrain Loaf
- 28-C White Bread Buns
- 28-D Whole Wheat Buns – 60%
- 28-E Cinnamon Rolls – made from sweet dough

Cakes

- 28-F Chocolate Cake
- 28-G Coffee Cake
- 28-H Decorated Cupcakes

Candies

- 28-I Fudge
- 28-J Brittle
- 28-K Any other Candy

Cookies and Squares

- 28-L Brownies
- 28-M Sandwich Cookies
- 28-N Drop Cookies
- 28-O Rolled Cookies
- 28-P Any Other Cookies
- 28-Q Shortbread
- 28-R Squares



Heritage Cooking

- 28-S Heritage Cooking – from a recipe created before 1940

Muffins

- 28-T Bran Muffins – no fruit or raisins
- 28-U Fruit Muffins

Pies and Tarts

- 28-V Pie made with Graham Crust
- 28-W Any Other Pie
- 28-X Butter Tarts
- 28-Y Filled Tarts

Section 29 – Culinary Arts Preserves

Canned Goods

- 29-A Canned Peaches
- 29-B Apple Sauce
- 29-C Canned Tomatoes
- 29-D Other Canned Fruit
- 29-E Canned Sauerkraut
- 29-F Canned Green Beans
- 29-G Canned Mixed Vegetables
- 29-H Other Canned Vegetables



Diabetic Preserves

29-I Preserve Suitable for a Diabetic – ingredients must be submitted with the entry item

Dried Fruits and Vegetables

29-J Fruit
29-K Vegetable
29-L Fruit Leather

Jams

29-M Strawberry
29-N Wild Berry
29-O Marmalade
29-P Other Jam

Jellies

29-Q Wild Berry
29-R Apple
29-S Raspberry
29-T Other Jelly



Pickles, Relishes and Condiments

29-U Dill Pickles
29-V Pickled Vegetable
29-W Relish
29-X Antipasto
29-Y Salsa
29-Z Chutney



Section 30 – Creative Writing

30-A Essay – Historical Event that Helped to Shape Prince George
30-B Essay – any theme
30-C Poem – any type

Section 31 – Crochet and Knitting

Crochet

31-A Thread – Doily
31-B Thread – Dresser or Table Runner
31-C Thread – Crocheted Edging
31-D Thread – Christmas Decoration
31-E Cushion or Pillow
31-F Small Wearable Apparel – such as a collar, belt or hat
31-G Doll Clothes
31-H Blanket
31-I Toque and Mitten Set
31-J Any Other



Knitting

- 31-K Baby Blanket
- 31-L Toque and Mitten Set
- 31-M Socks
- 31-N Sweater
- 31-O Layette Set (3 pieces)
- 31-P Any Other

Section 32 – Fibre Arts Spinning and Weaving

- 32-A Spinning – Single Ply Yarn
- 32-B Spinning – Two Ply Yarn
- 32-C Spinning – Other Fibre
- 32-D Yarn Dyeing
- 32-E Hand Spun Woven Garment
- 32-F Four Harness – Accessory
- 32-G Multi-Harness – Home Furnishing
- 32-H Multi-Harness – Garment
- 32-I Rug – Flat, Woven
- 32-J Rug – Pile, Woven
- 32-K Tapestry Weaving
- 32-L Woven Wall Hanging
- 32-M Felted – Home Furnishings
- 32-N Felted – Any Article
- 32-O Basketry
- 32-P Hand Spun Article



Section 33 – Indigenous Art

- 33-A Buckskin Apparel
- 33-B Buckskin Article
- 33-C Traditional Beadwork
- 33-D Traditional Dreamcatcher
- 33-E Traditional Basket
- 33-F Traditional Cane & Talking Sticks
- 33-G Traditional Carvings
- 33-H Traditional Artwork
- 33-I Métis Sash
- 33-J Any Other Piece

Section 34 – Needlework

Cross Stitch – Counted

- 34-A Picture
- 34-B Decorative Item
- 34-C Counted Beadwork, Picture, Framed

Cross Stich – Stamped Transfer Design

- 34-D Picture
- 34-E Any Other



Embroidery

- 34-F Coloured
- 34-G White
- 34-H Cutwork
- 34-I Ribbon

Needlepoint

- 34-J Petit Point
- 34-K Needlepoint
- 34-L Gros Point
- 34-M Quick Point
- 34-N Tapestry or Bargello
- 34-O Crewel

Section 35 – Photography

Amateur Photographers

- 35-A Abstract and Experimental
- 35-B Agriculture and Farm Animals
- 35-C Monochrome Photo
- 35-D Close-Up or Macro Photography
- 35-E Gardens and Domestic Plants
- 35-F Landscapes
- 35-G Nature – Wild Birds
- 35-H Nature – Wild Mammals
- 35-I Nature – Wildflowers and Plants
- 35-J Nature – Everything Else
- 35-K Portraits – Individuals or Groups
- 35-L Urban Landscapes
- 35-M Outdoor Recreation
- 35-N “Pioneer Days to Modern Ways” – show something that has changed over the years



People's Choice

Open to photographers of all ages, including Professionals.

Note: A “People’s Choice” ballot and ballot box will be available at the displays. Fairgoers will vote for their favourites in each of the following five classes. Balloting will close at 8pm on Saturday, August 20th.

- 35-O Fine Arts
- 35-P Landscape
- 35-Q Portrait
- 35-R Nature
- 35-S Photo in any Genre

Section 36 – Quilting

Quilts Greater than 55”

- 36-A Machine Pieced – Machine Quilted
- 36-B Machine Pieced – Long-Arm Quilted
- 36-C Machine Appliqued – Machine Quilted (not digitized)
- 36-D Machine Appliqued – Long-Arm Quilted (not digitized)
- 36-E Machine Embroidered – Machine Quilted or Digitized Machine Applique
- 36-F Machine Embroidered – Long-Arm Quilted or Digitized Machine Applique

Quilts Less than 54"

- 36-G Machine Pieced – Machine Quilted
- 36-H Machine Pieced – Long-Arm Quilted
- 36-I Machine Appliqued – Machine Quilted (not digitized)
- 36-J Machine Appliqued – Long-Arm Quilted (not digitized)
- 36-K Machine Embroidered – Machine Quilted or Digitized Machine Applique
- 36-L Machine Embroidered – Long-Arm Quilted or Digitized Machine Applique

Tied

- 36-M Any Size

Art Quilt

- 36-N Any Size Using Innovative Techniques

Small Quilt Projects: Table Runner, Place Mats, Stockings, etc.

- 36-O Any Appliqued Article
- 36-P Any Pieced Article
- 36-Q Purse or Tote Bag

Quilt Kit

- 36-R Any Quilt Made from a Kit

Wall Hanging

- 36-S Maximum Size 48"

Recycled

- 36-T Any Articles and Size

Quilt Foundation or Paper Pieced

- 36-U Any Size Machine Quilted
- 36-V Any Size Long Arm Quilted

Miscellaneous

- 36-W Any other quilted item not eligible for any other class. Must still fit in the quilted category and be made and finished with quilting techniques. (i.e. must be pieced, stitched and have binding with back of item visible for judging)

Section 37 – Recycling

- 37-A Recycled Metal Item
- 37-B Recycled Plastic Item
- 37-C Recycled Newspaper Item
- 37-D Recycled Styrofoam Item
- 37-E Made of Two or More Recycled Materials



Section 38 – Sewing

Sewn Crafts

- 38-A Dress
- 38-B Plaid Shirt
- 38-C Sleepwear
- 38-D Doggy Vest – must have picture of dog modeling vest
- 38-E Child's Outfit
- 38-F Upholstered Pillowcase
- 38-G Reusable Shopping Bag
- 38-H Microwaveable Bowl Cozy
- 38-I Bandana Bib for Infant or Dog
- 38-J Fleece Hat
- 38-K Any Other

Serge Sewn

- 38-L Skirt or Dress
- 38-M Infinity Scarf
- 38-N Wine Bag
- 38-O Sleep Mask
- 38-P Tablecloth and 4 Napkins
- 38-Q Purse
- 38-R Any Other



Section 39 – Wood Craft

- 39-A Any Burl Item
- 39-B Decorative Wooden Item
- 39-C Functional Wooden Item
- 39-D Carving
- 39-E Willow Furniture Item
- 39-F Wooden Bird House



Adult 19 – 54 Years and Seniors 55+

Horticulture Division

Please see pages 14 to 15 for the Horticulture Division section guidelines and judging criteria

Section 40 – Eggs

- 40-A Eggs – White
- 40-B Eggs – Brown
- 40-C Eggs – Coloured
- 40-D Best AOV Eggs (i.e. duck, goose, bantam, etc.)
- 40-E Eggs – Grain Fed
- 40-F Any Other

Section 41 – Flowers

Present 4 specimens for each class for presentation and judging unless otherwise specified

- 41-A Formal Arrangement – live local flowers & foliage, cultivated or native
- 41-B Petunias – same variety
- 41-C Any Other Species of Annuals
- 41-D Arrangement of Roses – additional foliage is allowed
- 41-E Herbs – tied in bunches, in a jar or vase of water. each bunch not to exceed 12” in length
- 41-F Homemade Potpourri

Section 42 – Field Crops

- 42-A Sheaf of Barley
- 42-B Sheaf of Oats
- 42-C Sheaf of Wheat
- 42-D Bale of Grass Hay – 5kg sample
- 42-E Bale of Grass Legume Hay – 5kg sample
- 42-F Bale of Oat Hay – 5kg sample
- 42-G Barley – Grain – quart jar
- 42-H Oats – Grain – quart jar
- 42-I Silage – Grain
- 42-J Sliver of Named Hay



Section 43 – Fruit

Present 4 specimens for each class for presentation and judging unless otherwise specified

- 43-A Apples
- 43-B Raspberries
- 43-C Tomatoes
- 43-D Any Other

Section 44 – Honey

- 44-A Liquid Honey – no less than 300 grams per entry
- 44-B Creamed Honey – no less than 300 grams per entry
- 44-C Frame of Honey – Deep
- 44-D Frame of Honey – Intermediate
- 44-E Frame of Honey – Shallow
- 44-F Beeswax – 3 units, no less than ¼ lb each
- 44-G Beeswax Candles – cast, maximum of 4
- 44-H Beeswax Candles – hand dipped, maximum of 4



Section 45 – Vegetables

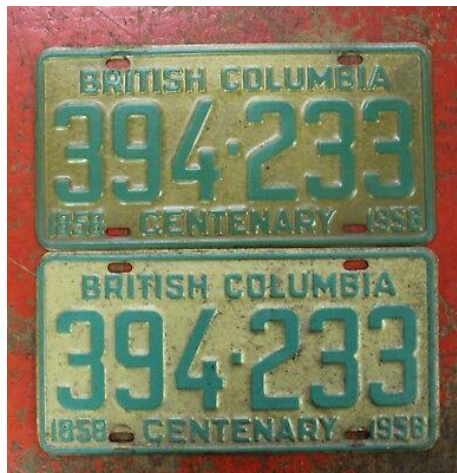
Present 4 specimens for each class for presentation and judging unless otherwise specified

- 45-A Potatoes
- 45-B Squash
- 45-C Carrots
- 45-D Brassica
- 45-E Garlic Bulbs – 3 bulbs with 6 to 8 cloves per bulb, cut stalk to 6” and roots to ½”
- 45-F Basket of Fruits & Vegetables – minimum of three types of fruits and/or vegetables
- 45-G Any Other

Speciality Section Open to All Age Groups

COLLECTIONS

- SS-01 Stamps, mounted on a display
- SS-02 Belt Buckles
- SS-03 Coins
- SS-04 Vintage Postcards, mounted on a display
- SS-05 Salt & Peppers, must be a set
- SS-06 Cameras
- SS-07 Bells
- SS-08 Hot Wheels, maximum 15
- SS-09 Vintage License Plates, different places/years/shapes
- SS-10 Pop Bottles, from 70s or older



Home Arts & Horticulture Entry Form

Deadline for Entries: Thursday, August 4th at 4:00pm

Exhibitor Name: _____

Mailing Address: _____ City: _____ Prov: _____

Postal Code: _____ Email Address: _____ Phone Number: (____) _____

Category: Please check one, for category ages 2-18 please provide the age as well

Preschool (2-5) _____ Junior (6-10) _____ Teen (15-18) _____

Adult (19-54) _____ Senior (55+) _____ Challenger _____

Incomplete forms will not be accepted and will be the responsibility of the exhibitor

Section A: Entry Item Fees		
Section and Class (e.g., 31-A)	Description of Exhibit (What is the entry item?)	Entry Fee \$ (refer to page 7)
Section A Subtotal:		\$

To purchase wristbands or if you need more space for sections/classes use the next page.

For Office Use Only
Exhibitor Number: _____

Section B: Entry Item Fees Continued

Section and Class (e.g., 31-A)	Description of Exhibit (What is the entry item?)	Entry Fee \$ (refer to page 7)
Section B Subtotal:		\$

Section C: Entrance Wristband Fees

Entrance Wristbands	Quantity	Subtotal
4-Day Youth Exhibitor (12 – 17) \$15.00		
4-Day General Exhibitor (18 – 54) \$28.00		
4-Day Senior Exhibitor (55+) \$12.00		
Section C Subtotal:		\$

Section D: Grand Total

Section A Total	+	Section B Total	+	Section C Total	=	Grand Total
\$		\$		\$		\$

I hereby make the above entries subject to the Rules and Regulations printed in the 2022 Home Arts and Horticulture Prize Book.

Signature _____

Date _____

For Office Use Only Exhibitor Number: _____
--