



Like our 2200, our 270 also offers the most popular bolt mounting pattern in the industry. Low profile, wear resistant Premalloy and easy quick latching are features that have made the 270 standard with fleets around the world.

This coupling must be used with an air service chamber.

Coupling Only:

- 270 & 271 Thimble

Standard Installation Kit:

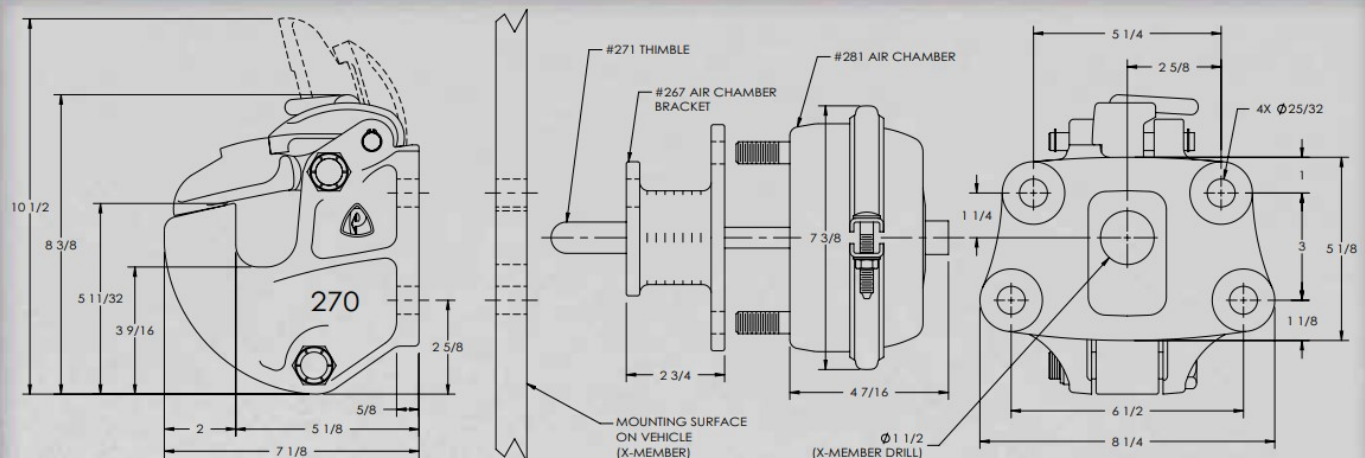
- 270A: 270 Coupling, 501 Bolt Kit, 281 Air Chamber, 267 Air Chamber Adapter Bracket, 271 Thimble

Optional Accessories:

- **Air Chamber 282 Type-30 (pg 74):** Provides a larger diaphragm for greater shoe force compared to 281 Air Chamber
- **Air Chamber Brackets (pg 74):** 267H (3/4 in. / 19 mm), 267F (4 5/8 in. / 117 mm)
- **Thimbles (pg 74):** 271B (4 3/8 in. / 111 mm), 271C (5 1/2 in. / 140 mm)
- **Drawbar Guides 378M (pg 73):** Helps guide drawbar eye into coupling
- **Wear Gage 14011 (pg 73):** To determine hook wear limits
- **Latch Gage 14026 (pg 73):** To determine latch gap limit
- **Bolt Kit 501 (pg 75):** Bolts (2) 2 1/2 in. (2) 2 3/4 in., Locknuts (4)

SPECIFICATIONS

Maximum Gross Trailer Weight:	90,000 lbs.	(40,823 kg)
Maximum Tongue Weight:	18,000 lbs.	(8,165 kg)
Ultimate Latch Capacity:	12,000 lbs.	(5,443 kg)
Maximum Eye X-Section:	1 13/16 in.	(46 mm)
Minimum Eye Opening:	2 3/8 in.	(60 mm)
Unit Weight:	26.3 lbs.	(11.9 kg)

STANDARD INSTALLATION DRAWING


Pushrod length should be 3 5/8 in. (92 mm) plus thickness of mounting structure for standard installations as illustrated.

REPLACEMENT PART INFORMATION
270PK Parts Kit Includes:

272: Latch	*266: Spring
273: Pawl	*271: Thimble
273A: Spring	*274: Bolt
273C: Set Screw	*274A: Locknut
274: Bolt	*279: Shoe
274A: Locknut	
275: Pin	
275-50: Retaining Ring (2)	

*Not included in 270PK Parts Kit, available as 279PK Parts Kit.


IMPORTANT GUIDELINES THAT APPLY TO ALL PREMIER SLACK REDUCING COUPLINGS

- Do not weld on any coupling assembly
- Always use Grade-8 fasteners properly torqued
- Do not apply lubricants to the coupling hook
- Air service chamber must be Type-24 or Type-30 with 90-120 PSI air supply
- Clean & inspect coupling for damage & excessive wear prior to each and every use
- Lubricate all coupling components at a minimum of 90 day intervals
- Do not bind-up (Jackknife) any application as stresses can cause damage to products or components, resulting in failure and detachment of the trailer while in use



Used frequently in dump and pup applications, our popular 370 offers users a low profile, high latch strength and our Premalloy body for maximum wear.
This coupling must be used with an air service chamber.

Coupling Only:

- 370 & 271 Thimble

Standard Installation Kit:

- 370A: 370 Coupling, 502 Bolt Kit, 281 Air Chamber, 467 Air Chamber Adapter Bracket, 271 Thimble

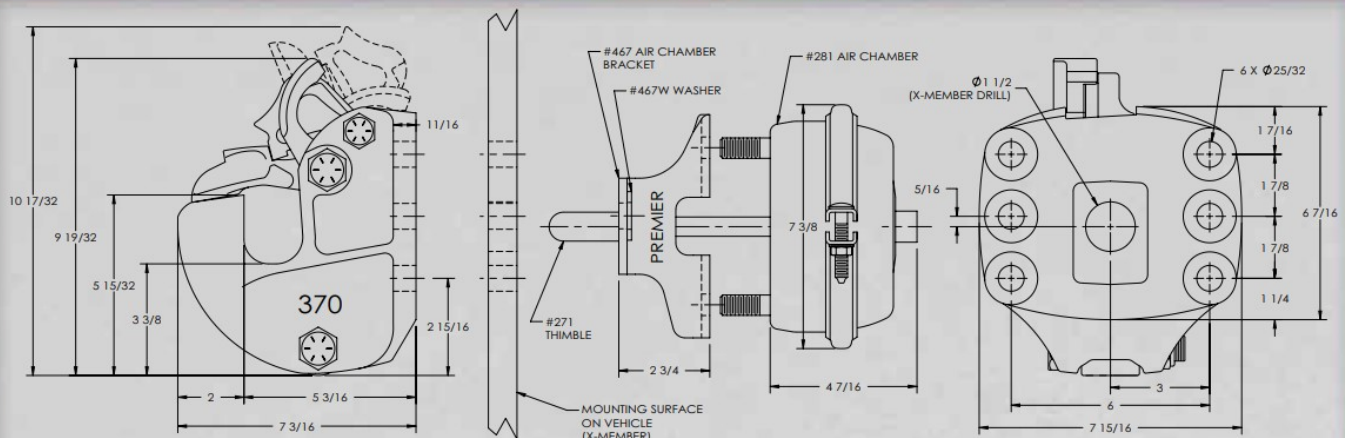
Optional Accessories:

- **Air Chamber 282 Type-30 (pg 74):** Provides a larger diaphragm for greater shoe force compared to 281 Air Chamber
- **Air Chamber Brackets (pg 74):** 467H (3/4 in. / 19 mm), 467F (5 1/2 in. / 140 mm)
- **Thimbles (pg 74):** 271B (4 3/8 in. / 111 mm), 271C (5 1/2 in. / 140 mm)
- **Drawbar Guides 378 (pg 73):** Helps guide drawbar eye into coupling
- **Wear Gage 14011 (pg 73):** To determine hook wear limits
- **Latch Gage 14026 (pg 73):** To determine latch gap limit
- **Bolt Kit 502 (pg 75):** Bolts (4) 2 1/2 in. (2) 2 3/4 in., Locknuts (6)

SPECIFICATIONS

Maximum Gross Trailer Weight:	90,000 lbs.	(40,823 kg)
Maximum Tongue Weight:	18,000 lbs.	(8,165 kg)
Ultimate Latch Capacity:	20,000 lbs.	(9,072 kg)
Maximum Eye X-Section:	1 13/16 in.	(46 mm)
Minimum Eye Opening:	2 3/8 in.	(60 mm)
Unit Weight:	30 lbs.	(13.6 kg)

STANDARD INSTALLATION DRAWING



Pushrod length is 4 in. (102 mm) plus thickness of mounting structure for standard installations as illustrated.

REPLACEMENT PART INFORMATION

370PK Parts Kit Includes:

274A: Locknut	582A: Spring
372B: Locking Pawl	*266: Spring
373: Pawl	*271: Thimble
373A: Spring	*274: Bolt
373B: Spacer	*274A: Locknut
374: Bolt	*279: Shoe
375: Bolt	
375A: Locknut	
472: Latch	

*Not included in 370PK Parts Kit, available as 279PK Parts Kit.



IMPORTANT GUIDELINES THAT APPLY TO ALL PREMIER SLACK REDUCING COUPLINGS

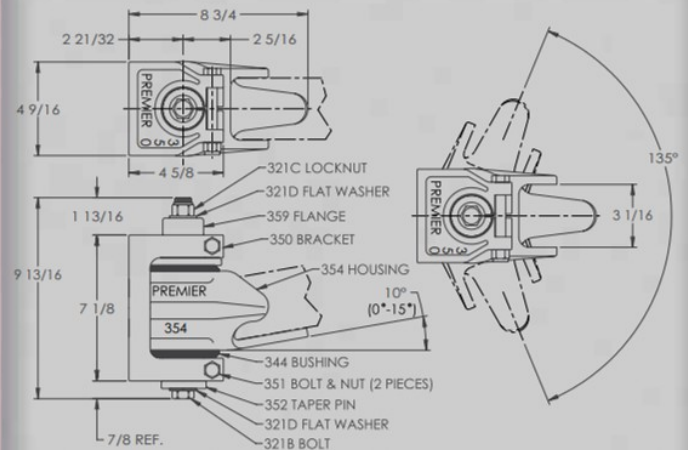
- Do not weld on any coupling assembly
- Always use Grade-8 fasteners properly torqued
- Do not apply lubricants to the coupling hook
- Air service chamber must be Type-24 or Type-30 with 90-120 PSI air supply
- Clean & inspect coupling for damage & excessive wear prior to each and every use
- Lubricate all coupling components at a minimum of 90 day intervals
- Do not bind-up (Jackknife) any application as stresses can cause damage to products or components, resulting in failure and detachment of the trailer while in use

320 / 320A Hinge Assembly



Accepts 3 in. (76 mm) standard channel or square tubing.
344 Rubber Bushings standard, 344A Poly optional (320A)

Sold as pair,
2 hinges.



SPECIFICATIONS

Max. Gross Trailer Weight (pair): 100,000 lbs. (45,359 kg)
Unit Weight (pair): 51.2 lbs. (23.2 kg)

Bushing Replacement: 344 (Rubber) or 344A (Poly)
Outside Diameter: 3 1/2 in. (89 mm)
Length: 4 1/2 in. (114 mm)



Each Hinge Includes:

321B: Bolt	351: Bolt & Nut (2)
321C: Locknut	*352: Taper Pin
321D: Flat Washer (2)	356: Housing
344: Bushing	359: Flange
350: Bracket	

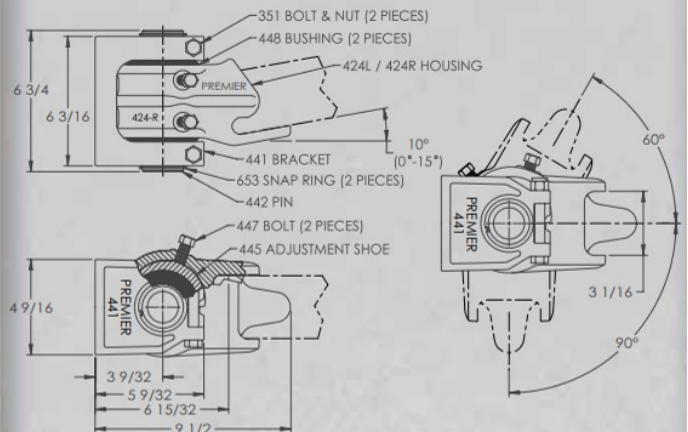
*352 Taper Pin includes the following parts: 321B, 321C, 321D.

440 / 440A Hinge Assembly

Sold as pair,
2 hinges.



Accepts 3 in. (76 mm) standard channel or square tubing.
448 Rubber Bushings standard, 448A Poly optional (440A)



SPECIFICATIONS

Max. Gross Trailer Weight (pair): 100,000 lbs. (45,359 kg)
Unit Weight (pair): 53.2 lbs. (24.1 kg)

Bushing Replacement: 448 (Rubber) or 448A (Poly)
Inside Diameter: 2 in. (51 mm)
Outside Diameter: 3 1/2 in. (89 mm)
Length: 1 3/4 in. (44 mm)



*448 Bushing is 2 pieces.

Each Hinge Includes:

351: Bolt & Nut (2)	445: Adjustable Shoe
424L/424R: Housing	447: Bolt (2)
441: Bracket	448: Bushing (2)
*442: Pin	653: Retaining Ring (2)

*442 Pin includes the following parts: 653 (2).

IMPORTANT GUIDELINES THAT APPLY TO ALL PREMIER HINGE ASSEMBLIES

- Never attempt weld repair of damaged or worn hinge components
- Clean and inspect hinge assemblies for damage or excessive wear before each and every use
- All weld attachments should be performed by a certified welder skilled in structural welding
- The mounting structure the hinges are welded to must be of sufficient strength to withstand load ratings of hinges
- Do not bind-up (Jackknife) any application as stresses can cause damage to products or components, resulting in failure and detachment of the trailer while in use

Premier Swivel Drawbar Eye - PRE 207S

207 Swivel Eye

See pages for
Front End Housings.

Parts Included:

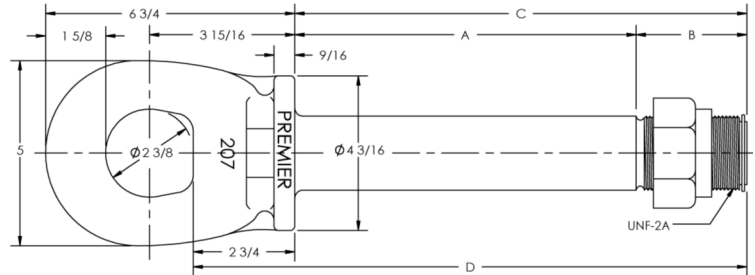
- 208 / *208SPL Retaining Ring
- 416 / *416K Locknut

*For use with 207K model only.



SPECIFICATIONS

Maximum Gross Trailer Weight:	90,000 lbs.	(40,823 kg)
Maximum Tongue Weight:	2,500 lbs	(1,134 kg)
Inside Diameter:	2 3/8 in.	(60 mm)
Unit Weight:	See chart	



MODEL	A	B	C	D	SHAFT DIAMETER	WEIGHT
207L	9 1/4" (235 mm)	3" (76 mm)	12 1/4" (311 mm)	15" (381 mm)	2" (51 mm)	25.3 lbs. (11.5 kg)
207S	8 1/8" (206 mm)	3 1/4" (83 mm)	11 3/8" (289 mm)	14 1/8" (359 mm)	2" (51 mm)	24.4 lbs. (11.1 kg)
207SE	10 1/8" (257 mm)	3" (76 mm)	13 1/8" (333 mm)	15 7/8" (403 mm)	2" (51 mm)	26.1 lbs. (11.8 kg)
207K	8 1/8" (206 mm)	3 1/4" (83 mm)	11 3/8" (289 mm)	14 1/8" (359 mm)	2 1/4" (57 mm)	28 lbs. (12.7 kg)

Premier Front End Assembly - PRE 536B

536 Front End Housings



Designed For Use With: 207K, 207S, 307K, 307S & 405S Swivel Drawbar Eyes Only

Bushing Options:

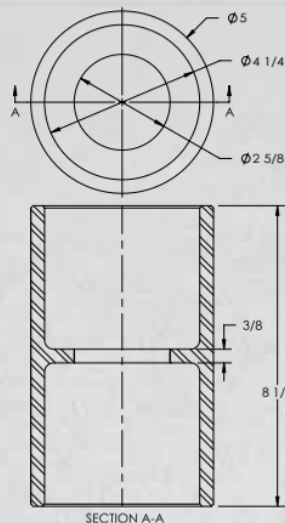
437 (Rubber), 437A (Poly) or *437AK (Poly):

Inside Diameter: 2 in. (51 mm) or

*2 1/4 in. (57 mm)

Outside Diameter: 4 1/4 in. (108 mm)

Length: 4 1/2 in. (114 mm)



Ordering Information:

536A: 536 Housing, 437 Rubber Bushings & 349 Washer

536B: 536 Housing, 437A Poly Bushings & 349 Washer

536BK: 536 Housing, 437AK Poly Bushings & 349SEK Washer
* (used with 207K and 307K only)