



**ST. THOMAS-ELGIN PUBLIC ART CENTRE  
2019 ANNUAL REPORT  
CELEBRATING 50 YEARS**







## Our Mission

To encourage and support an appreciation for and support the practice of the visual arts in St. Thomas and Elgin County through a variety of exhibitions, educational programs and through the preservation of a permanent collection.

## Our Vision

The St. Thomas-Elgin Public Art Centre is a highly valued and respected art centre that is a focal point for the St. Thomas and Elgin community. The Art Centre is dedicated to fostering a welcoming, enriching and engaging environment of art and creativity, inspire, challenge and educate its audiences.

We gratefully acknowledge the continued support from the City of St. Thomas, the County of Elgin, donors, members and supporters. With your support you provide us with the opportunity to be creative, responsive and entertaining.

# Our 50th Year at a Glance

- ⇒ **10** historical and contemporary exhibitions were present at the Public Art Centre
- ⇒ **125** artworks were acquired for the Public art Centre's collection through donation, bringing the total number of artworks to **1897**
- ⇒ **291** individual artist were exhibited in the Public Art Centre's gallery spaces
- ⇒ **923** Children participated in art programs
- ⇒ **1248** Students from Schools across St. Thomas and Elgin County took part in School programs
- ⇒ **4016** People attended Adult programs, including tours, lectures and events
- ⇒ **252** Individual members supported the Public Art Centre
- ⇒ **45** Community members volunteered **907** hours at the Public Art Centre (Estimated wages **\$12 698.00**)
- ⇒ **7986** People follow the Public Art Centre via Facebook, Instagram and Twitter
- ⇒ **12307** Visitors attended exhibitions at the Public Art Centre
- ⇒ **34** partnerships and rentals
- ⇒ **2019** recipient of **"UNSUNG HEROES" Award** St. Thomas District Chamber of Commerce



Cover Image; Rebecca Sisler, *Untitled*, Clay, undated, Gift of Lois Farley



## Message from the President

2019 was the year we commemorated the 50<sup>th</sup> anniversary of the St. Thomas-Elgin Public Art Centre, started in 1969 through the initiative and fundraising support of local Women's groups. We celebrated this significant anniversary with exciting exhibits, engaging public activities and quality educational programming, all which drew, to date, over 14,366 visitors. In April we launched the year with the opening of, *Foundation*, our major exhibition highlighting collection works from the earliest days of its development. This and our many other exhibits curated this year support and give voice to our local, regional and national artists.

To support our activities, each year we undertake two major fundraising events, Redtail Cocktail Party and Silent Auction and our fall annual Art Auction. Both are well attended and supported. We thank all our generous local sponsors and the community who help make these events so successful

The Board is proud of the Public Art Centre for receiving the "Unsung Hero" Award acknowledging its continuing support to the community. The award was presented in May at the St. Thomas Chamber of Commerce IMPACT AWARDS. This community support comprises not only free educational programming for both school boards, but partnerships with Elgin County and the City of St. Thomas community health, tourism, business and arts organizations.

None of these successes at the art centre would be possible without our talented staff, Program Director, Sherri Howard and Receptionist, Katelyn Tippin, who thrive under the leadership, energy and drive of Executive Director, Laura Woermke. We thank them for their dedication to the Art Centre and for making art happen in St. Thomas and Elgin County.

Suzanne Baehr  
STEPAC Board of Directors President





## Message from the Executive Director

It is my distinct honour to lead the St. Thomas-Elgin Public Art Center during our 50th year. I believe firmly in the Art Centre as the site of transformative possibilities through art. It is my intention to continue with the vision and mission set forth by the founders of the Public Art Centre, "to encourage and promote an appreciation for, and support the practice of the visual arts in St. Thomas, Elgin County and surrounding area through exhibitions, education and preservation of the permanent collection". It is a great honour to offer you, our members, as well as thousands of annual visitors, exceptional opportunities to engage with art by artists from St. Thomas, Elgin County and beyond.

Indeed, the 2019 program attracted over 18 000 visitors to 10 historical and contemporary exhibitions at the Public Art Centre, featuring the work of 291 artists from Canada. Of note was the outstanding exhibitions FOUNDATION, Selections from the Permanent Collection and CURRENT, Contemporary selection from the collection, celebrating the Public Art Centre's 50th anniversary.

Over the past year, the collection was actively engaged, It was increased by 126 artworks through generous donations, bringing its total to 1897. Our special celebratory exhibitions also brought with it the creation of a publication with an essay by Andrea Villar.

Public Art Centre and museums exist for the engagement of our many communities. Our educational programs, lead by Sherri Howard, saw an increased participation from across St. Thomas, Elgin County and Southwestern Ontario, addressing the our commitment to encourage a dynamic exchange of ideas prompted by art.

None of the Public Art Centre's achievements would have been possible without the many significant donors who supported this institution through generous gifts. All the donations, from individuals,



corporations, business, the City of St. Thomas and the County of Elgin, and foundations, contribute in profound ways to the long-term sustainability. I also acknowledge the hours of work invested by volunteers who served on our Board, assisted our visitors and help in countless ways at special events, education programs and more. Most importantly, I extend my heartfelt thanks to Sherri Howard for her passion and expertise as she worked tirelessly on the front lines and behind the scenes to create a remarkable learning experience for everyone.

As we move into 2020, I am excited to fulfill our future priorities and vision. To pave the way for the needs of artists and the desires of our audience.

Laura Woermke

Executive Director / Curator



## Message from the Program Director

2019 marks the 50th anniversary of the St. Thomas-Elgin Public Art Centre. Throughout the year we celebrated every aspects of what the Public Art Centre has offered and continues to offer to our community and fundamental to all of this is art education.

Great significance is placed on our role as a community partner in St. Thomas and Elgin County and each year between 1500-2000 students visit the Art Centre to take part in educational tours and hands-on activities. These tours are structured so that they meet the requirements of the Ontario School Curriculum in art (as well as other subjects) and they are presented in a fun, active manner that truly engages the students. Each class that visits takes part in an exhibition tour, discussions about art, and a hands-on art activity. All of this is offered free of charge to the schools and made possible through generous donations by individuals, businesses and service groups from our community.

Our 50th Anniversary exhibition schedule focused primarily on the Public Art Centre's extensive permanent collection and the Art Centre sought to "bring art history to life" through this incredible resource. Participants and visitors of all ages were presented with hundreds of historic, as well as contemporary works of art by local, regional and national artists. Then using imagination, story telling, and countless personal connections the visual history of our community was experienced, animated, and reaffirmed by thousands of viewers.

Almost all schools in the TVDSB and LDCSB have an Environmental Literacy Programs. These programs try to make curriculum connections using the outdoors/environment/nature, and community partners. The Public Art Centre was happy to provide a jumping off point for several of these programs in 2019 including special environmental partnerships with: New Sarum Public School, P.E. Trudeau, Kettle Creek Public School and Summers' Corners Public School

In addition to the many recurring and ongoing community programs offered each year, the Public Art Centre was thrilled to introduce West End Wednesdays in 2019. This community program offered an opportunity for individuals working in the west end to come together and enjoy lunch in the main gallery space, on the third Wednesday of the month from May-August. This program was based on the idea that getting away from your desk and sharing a meal with others, makes you happier, boosts your productivity and builds a sense of community.

Our facility rental program also ensured that many local and regional businesses and organizations were able to host their events and gatherings in a welcoming space that our community can be very proud to call it's own.

As the Public Art Centre looks toward to 2020, we are inspired by the our history and enthusiastic to begin this new chapter with our community.

Sherri Howard  
Program Director





## Participation at the Public Art Centre

Month	Visitors	Tours/Offsite Community	Adult Classes	Children's Classes	Openings/ Special Events	Facility Rentals	Totals
January	828	0	0	45	123	348	1344
February	750	342	40	101	886	37	2156
March	1197	37	10	88	84	126	1542
April	847	167	30	41	146	165	1396
May	1301	185	39	80	218	160	1963
June	884	113	20	25	95	15	1152
July	1238	60	0	175	163	48	1684
August	1670	0	0	184	40	38	1932
September	949	5	0	14	137	92	1197
October	1061	102	6	69	748	101	2105
November	902	107	81	101	1125	492	2798
December	743	65	0	0	25	270	1091
<b>Totals</b>	<b>12307</b>	<b>1248</b>	<b>226</b>	<b>923</b>	<b>3790</b>	<b>1892</b>	<b>20360</b>
<b>Totals 2018</b>	8142	1196	308	897	3582	1305	15430
<b>Totals 2017</b>	4791	2144	364	699	2558	1905	12461





## 2019 EXHIBITIONS

At the start of our 2019 exhibition schedule we were planning for our 50th Anniversary. To kick off the year of festivities and celebrations we began with two solo artists exhibitions and completed 2019 with a contemporary salon styled exhibition steeped with our Canadian visual history.

### RON MILTON

#### ***So You Want to be a Bird***

JANUARY 5 TO FEBRUARY 16, 2019

*Organized by the St. Thomas Elgin Public Art Centre, travelled to the Station Art Gallery Norfolk County.*

The central concept for this show is flight, a lifelong fascination. As a child I would spend hours watching thousands of birds fly over our house in London during their fall migration. I enjoyed the marvelous moving patterns made by a flock in response to potential predators or air currents. When I got older I joined the Junior Naturalists, observing eagles nesting near Komoka or small birds such as bright cardinals outside a log cabin.

Flight provided subject matter during my education at Bealart and Mount Allison University. The study of art history reintroduced me to the Greek myth of Icarus and the amazing designs of Leonardo Da Vinci based on his observations of birds and their anatomy. The initial pieces for this show were drawings of bird skulls and skeletons using silverpoint, an early medium for writing later employed in Renaissance art. I borrowed and purchased bird skeletons and taxidermy models to learn more about avian structure.

As this show evolved I also listened to 1960's rock groups such as the Byrds and the Beatles. The "fab four" released "Free as a Bird" on the Anthology project seventeen years after John Lennon's death based on a demo tape he had recorded. My vintage vinyl collection features many from the Liverpool boys including Sgt. Pepper's Lonely Hearts Club Band. The cover art's bright colours and use of stripes and symbols tied nicely into the carnival imagery of my childhood.

In conclusion the art created for this exhibition wanders through different aspects of being a bird. From human dreams of flight to the fate of becoming a meal, "So you want to be a bird!" swings between reverence and humour flavoured with nostalgia.

#### **Building a Collection**

#### **Recent Acquisitions**

January 5 to February 16, 2019

The exhibition Building a Collection: Recent Acquisitions of the Public Art Centre highlights it's commitment to collecting historic and contemporary Canadian art by showcasing a selection of our most recent acquisitions. These artists create in a variety—and often combination of—media, from drawing and painting, to



Ron Milton: *So You Want to be a Bird, Chicken*, 2017, cast aluminum

printmaking. Some of the artists feature include Eric Atkinson, Tony Urquhart, Clark McDougall, Evelyn Knight and Arnold McBay.

## **PATRICK THIBERT**

### ***The Wrap Series***

FEBRUARY 23 TO APRIL 6, 2019

*Curated by the St. Thomas Elgin Public Art Centre.  
Exhibition catalogue nominated for best design—  
Ontario Association of Art Galleries*

Artist Statement: If I could characterize one dominant theme in my work over the last fifty years it would be my interest in line. It has come and gone many times over those decades. The Wrap series of wall sculptures in this exhibition was created as a result of that ongoing investigation of line and colour.

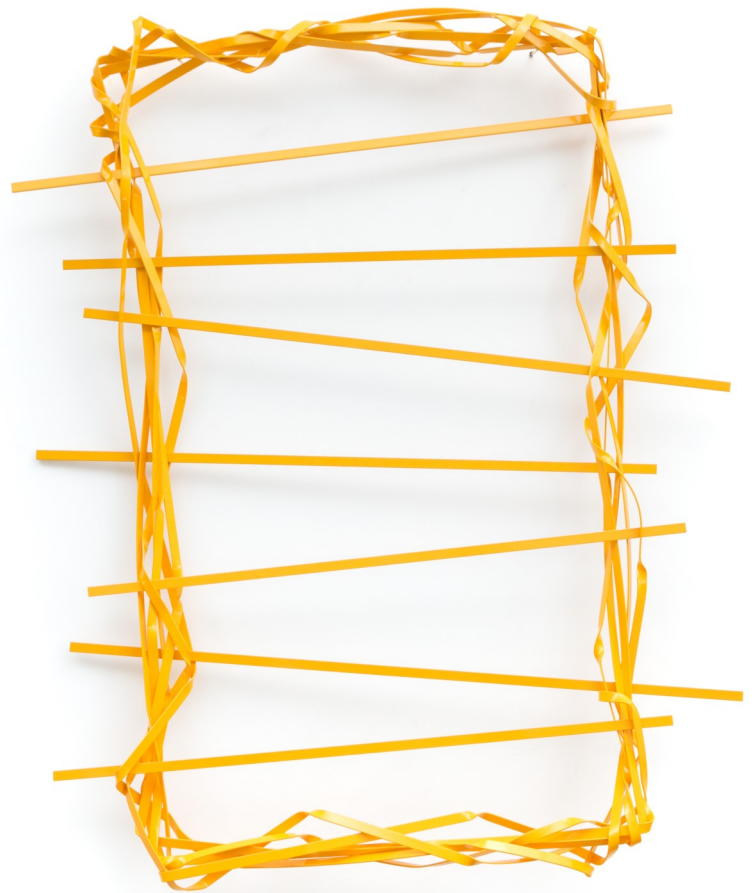
This body of work explores the dynamics of line and space and the physical relationship of the viewer to the lyrical wall constructions. The compositions challenge the viewers by physically reaching into their space. At any moment the linear elements move in and out of the core of the structure to physically pull the viewer visually into the composition only to be quickly exited out again.

Some of the lyrical constructions in this exhibition explore a tight and constricted core only to have the linear elements reach out and away from the centre. Whereas the linear focus on some of the other wall sculptures is on the perimeter with an open centre as in Wrap No.15 and Wrap No.17.

The strong colours offer different emotional responses to the lyrical constructions that change and shift as the viewer's retina adjusts, at times, to the subtle colour combinations. The singular or multiple colours applied to the different sculptures create a visual tension that changes as the colours change thus creating the different emotional responses.

The lyrical constructions that followed Wrap No.1 explored the physical space around the sculptures. The various Wrap sculptures explored compression and expansion. The changes to the linear elements were created by the process of rolling, folding and twisting the aluminum. As a result, they offer the possibility of different experiences for the viewer.

Patrick Thibert ~ January 10, 2019.



Patrick Thibert, *Wrap Series No 14*, 2017, aluminum





## FOUNDATION

### ***50 Years: Selections from the Collection***

APRIL 13 TO AUGUST 31, 2019

*Curated by the St. Thomas Elgin Public Art Centre. Exhibition catalogue FOUNDATION: SELECTIONS FROM THE COLLECTION*

The Public Art Centre celebrates its 50th anniversary, an exciting milestone in our history of serving the community. Since our founding, the Public Art Center has fostered the benefits of self-expression, cognitive and emotional wellness, ideas-sharing and common understanding that serves to gather and strengthen community. The Public Art Centre is the primary resource for arts education and appreciation in St. Thomas and Elgin County through its classes in the visual arts, gallery exhibitions, the preservation of a permanent collection and events that creatively engage and inspire.

In 1969, the Public Art Centre became a collecting institution at a time when it had no physical space. It was assembling a collection that documented our local and regional history through contemporary and historic artworks. Its reputation for its collecting vision immediately attracted the support of many donors. Through generous donations provided by founding members such as Lois Farley and Donald Anderson as well as gifts from the University Women's Club and the Women's Art Association, it has built a strong collection of contemporary and historic paintings and works on paper.

Over its fifty years, the Public Art Centre has acquired over 1700 works with an emphasis on local artworks and artists. It is from our local scope of geography that our collection finds its uniqueness. With hundreds of

pieces, the Public Art Centre shares these works to the world of scholars and research. It includes some of the most creative and compelling expressions of human creativity.

As we celebrate, we are pleased to present a series of exhibitions designed to catalyze conversations about the Public Art Centre's role in defining and documenting our important visual history. *Foundation: 50 years, Selections from the Collection*, is an assemblage of historic art works by local and regional artists hung in the traditional salon style. The selection draws attention to and demonstrates the finely woven realm of artistic influence through mediums, style, association and instruction with special focus on the works of Ross Reverdy Osgood, William St. Thomas Smith, Lila Knowles, Caroline Curtis, and Clark McDougall.

This exhibition and its associated programs and publication is supported by a generous bequest from Barbara Anne Bridge, the Elgin Historical Society, the City of St. Thomas, County of Elgin, and our members and donors.

## TOUJOURS EN AVANT

### SELECTIONS FROM THE PERMANENT COLLECTION

#### Gallery Three

APRIL 12 TO JUNE 29, 2019

*Curated by the St. Thomas-Elgin Public Art Centre Text by Sherri Howard*

It is the mission of the St. Thomas-Elgin Public Art Centre to encourage and promote an appreciation for and support the practice of the visual arts in St. Thomas and Elgin County through a variety of exhibitions and educational programs and through the preservation of a permanent collection.

In this statement the founders created the ideal way to: honour the past, by collecting and maintaining our visual history, support the present generation of artists, through exhibitions of their work, and inspire the next generation, through educational programs and the opportunity to see the other two aspects valued. This is the mission that the Public Art Centre has been aspiring to for 50 years. But long before the founding of this organization, another institution in St. Thomas had realized a similar mission for the community and in doing so, laid a solid foundation for the Public Art Centre.

The doors of Alma College were officially opened in October 1881. It was established as a Liberal Arts College for young women with instruction in literature, arts and music. Advertisements from the time assert that Alma College had the finest building and furnishings in Canada. Alma also celebrated many accomplished teachers, who educated and inspired.

Frederic Marlett Bell Smith, one of Cana-





da's most celebrated artists, was hired as the school's first director of fine art in 1881. He remained in this position until 1886. William St. Thomas-Smith, thought to be the first Canadian impressionists, began teaching art at Alma College in 1887, just shortly after marrying Julia Payne, herself a teacher of clay modeling, wood-carving and sculpture, at Alma College. Throughout its more than 100 year history, Alma brought some of the finest artists and teachers into our community and educated generations of talented, women artists. Some of these women taught at Alma College, after graduation and many pursued successful careers in art.

Evelyn Knight (1950s), Elizabeth Lambe (1940's), Lila McGillivray Knowles (1940s) and Ethyl Stripp Stevens (1890s) all taught at Alma College, and pursued careers as artists throughout their lifetimes. Evelyn Knight also attended Alma as a student and was taught by both Elizabeth Lamb and Lila McGillivray Knowles. Carolyn Curtis an Alma alumnae, pursued art as a full-time career. She is perhaps best known for her watercolours of local scenes, but she was considered by some to be one of the finest printmakers in Canada. In 1970, when the Public Art Centre officially opened at 301 Talbot Street, Jean Sutherland Boggs, Director of the National Gallery of Canada and an Alma College graduate, was on hand to officially open the new gallery. Gallery of Canada

Receiving a quality education, from exceptionally skilled teachers is a fine thing and perhaps fulfilled the pledge "to make their lives useful and happy and their tastes elevated and refined", as promised on the sign outside Alma's gates. What Alma seemed to also provide for its students, and our community, was proof of how encouraging it is to have art, artists, and art educators in our community,

An artist like William St. Thomas Smith not only taught the students at Alma College, he also mentored a young Clark McDougall, who would go on to distinguish himself as an artist, and whose work continues to excite artists today. Exhibitions of Smith's and McDougall's work, displayed on the third floor of Anderson's Department Store, were an exciting introduction to art for a group of young women. These women, along with Don Anderson, would be the driving force behind the establishment of the Public Art Centre in 1969.

Alma itself had an extensive collection of art that adorned the hallways and rooms of the school. Student exhibitions, a high point of the school year, were displayed proudly in the school's drawing room, surrounded by the work of accomplished professional. Many of the works from the Alma College collection as well as works by former teachers and students, are part of the Public Art Centre's collection and we maintain them, and the legacy of Alma College, with great pride, as we move ever forward.

## A PASSION TO COLLECT

*From the Collections of Cliff Barwick  
and Steven McLarty-Payson*

### **Gallery Three**

JULY 6 TO AUGUST 31, 2019

*Curated by the St. Thomas Elgin Public Art Centre. Sponsored by Dr. Ian Begg and Minerva Art Gallery*

Living with an art collection of any size can be a richly rewarding experience for so many reasons especially if you follow your passion. You probably know that the years of pleasure a good art collection may

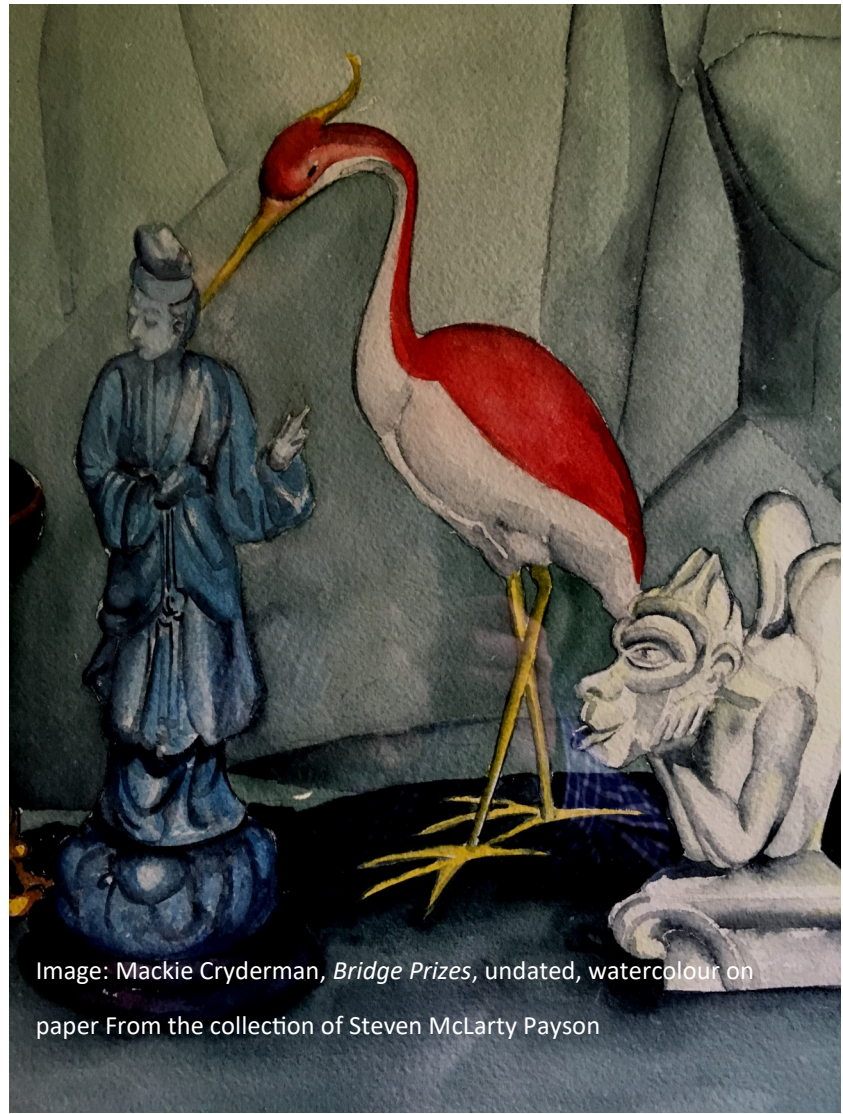


Image: Mackie Cryderman, *Bridge Prizes*, undated, watercolour on paper From the collection of Steven McLarty Payson

bring you is invaluable. If you want to become an art collector, you may ask, how and where do you begin?

When a collection is assembled (which is an on-going process for the collector) it brings a value beyond the sum of the parts, it creates a certain order and reflection of the collector's response to them.

The St. Thomas-Elgin Public Art Centre is pleased to present selections from the private art collections of Cliff Barwick and Steven McLarty-Payson, in honour of the Public art Centre's 50th anniversary.

The artworks currently on view represent outstanding examples of the individual tastes and collecting styles. While each artwork embodies a distinct form of expression, they additionally represent what the collector finds important to preserve. Within each lies the belief in sharing with as many people as possible, the gift of art.

"My first purchase of original Art was in 1983 when I purchased a watercolour by Valerio Racca, for \$125.00! At that time Art Rental was popular at our Gallery and my collection started then with this purchase. Maggie Mitchell was the Art Gallery Curator at that time and that was the beginning of my "lessons in Local Art". And at that time I began Volunteer work at the Gallery which I enjoyed immensely! I also had the privilege of a few Art lessons with Evelyn Knight where we painted together and when I retire this year I hope to rediscover, my "hidden talents"! I am excited to share some of my collection with the community this year, our Fiftieth year as a community Art Gallery."

- Steven McLarty-Payson, BA.

Thank you to the Minerva Art Gallery and Dr. Ian Begg for their sponsorship of this exhibition and supporting the belief that art is a special language and a unique form of expression that should be valued and shared.

## IN VIEW OF THE ARTIST

### *Annual Juried Exhibition*

SEPTEMBER 7 TO OCTOBER 19, 2019

*Juried by Gerald Pedros B.F.A, M.A. Sponsored by THE Downtown Development Board*



Back for the sixth consecutive year and in celebration of our 50th anniversary, IN VIEW OF THE ARTIST continues to be one of the most highly anticipated exhibitions. This exhibition celebrates the artist behind the work, what the artist sees and creates, "in their view", real or imagined. It supports the production of new artwork made in a variety of mediums, including painting sculpture, digital media, photograph and mixed media. Artworks are selected by a profession jury who consider originality, creativity, process and engagement as some of the criteria for inclusion in this exhibit.

Over 100 works of art was submitted for this exhibition. The Juror deliberated and decided that 62 works of art from artists from all over Southwestern Ontario completed the exhibition. It celebrated community, vision and imagination.

On September 28, during Culture Days, "Meet the Artist" at a reception held from 1-3pm.

**CULTURE  
DAYS**

**St. Thomas  
downtown**  
DEVELOPMENT BOARD



## WHITE WALLS & SIGNIFICANT FORMS

### Small Sculpture from the Permanent Collection

NOVEMBER 9 to FEBRUARY 15, 2020

*Curated by the St. Thomas-Elgin public Art Centre*

The Public Art Centre maintains a permanent collection of artwork ranging from paintings, drawings, prints and photographs. But, the collection also contains a number of sculptures ranging from mixed media, bronze, cast lead and aluminum. White Walls: Small Sculpture from the Permanent Collection is an exhibition in celebration of the 50th anniversary and is drawn entirely from the permanent collection.

Art is a constantly evolving continuum and a reflection of the times in which it is created. Through the practice of modern and contemporary sculptors, the three-dimensional art form has come a long way since the marble busts and friezes.

Throughout the 20th century, artists reconsidered, redefined and reworked the concept of sculpture in a profound way. During the 1960s and 1970s, sculptors began experimenting with a wide array of materials and approaches to create their work.

In the contemporary art landscape, the sculpture has many manifestations. It exists in and defines not just physical space, but psychic space, conceptual space and political space. Thus, the sculpture is far more than the physical thing itself. From artist working on a smaller scale to those constructing monumental works that correspond to or reflect their environment, the artists in this exhibition demonstrate a different vision of what sculpture can be on a small scale.

The development of the St. Thomas-Elgin Public Art Centre's permanent collection relies heavily on the donation of art from artists, private and corporate collectors. The significance of the collection not only comes from the works of art but from the generosity of the donors and artists.

## CURRENT, Contemporary Selections from the Permanent Collection

November 9 to February 15, 2020

### Gallery One and Two

*Curated by the St. Thomas-Elgin Public Art Centre*

*Celebration Saturday November 16, 2019 6-9pm*

Visual art is a part of the fabric of communities and drives conversations that shape our values. The role of an artwork reaches far beyond an individual piece—it creates a platform for reflection and innovation.



Rebecca Sisler, *Untitled*, Undated, clay sculpture. Gift of Lois Farley



We believe that contemporary art is an essential part of public life, and we share it with passion and purpose. We work to interpret, present, and preserve the artworks in our care and develop programs to help the public connect with the art and its makers. We invite you to explore the people and artwork that inspire our 50th anniversary contemporary exhibition.

Bringing together art works from the last five decades, by our local and regional artists, CURRENT, Contemporary Selections from the Permanent Collection, includes Ron Kingswood's distinctly impressionistic style depicting wildlife, the organic fibreglass sculptures of Walter Redinger and the regionalist pioneer, Greg Curnoe. Drawn entirely from the permanent collection, the exhibition presents a diverse array of Canadian artists — such as Roly Fenwick, Joespha van den Anker, Clark McDougall, Harry Wilkinson, Bob Bozak, Patrick Landsley, Candy McManiman, Jan Row, Ed Zelenak and Gerald Pedros — who define contemporary art in our region.

#### Permanent Collection Statement of Purpose:

The St. Thomas-Elgin Public Art Centre's Permanent Collection is the largest and most significant in the St. Thomas and Elgin County region, made up of approximately 1700 artworks of local, regional, national and international origin in a variety of media, with special emphasis on contemporary and historical Canadian art, and on the artists associated with St. Thomas and Elgin County. The historical component of the Collection is based on approximately 400 works by local artists from the 19th and 20th century, with content that demonstrates our important history, which includes, oil paintings, prints, sculpture and watercolours. Several major gifts of artwork have been made to the Collection, including the St. Thomas-Smith and Clark McDougall works and through a purchase of the artwork from Alma College.



Detail: Margo Arris, Untitled, 1965, plaster mounted on panel. From the collection of the St. Thomas-Elgin Public Art Centre



## Programs (Children and Adult)

### Seasonal Classes / Workshops for Children

PA DAY Works, January 18, 2019 Grades JK-5  
Elementary Expressions (Winter Session) January 26 to March 2, 2019 Grades JK-3  
Drawing and Painting (Winter Session) January 26 to February 16, 2019 Grades 4-8  
Elementary Expressions (Spring Session) April 27 to June 1, 2019, Grades JK-3  
Drawing and Painting (Spring Session) April 27 to May 18, 2019 Grades 4-8  
P.A. Day Workshop April 5, 2019 Grades JK-5  
P.A. Day Workshop June 7, 2019 Grades JK-5

Elementary Expressions (Fall Session) October 19 -Nov 23 Grades JK-3  
Drawing and Painting (Fall Session) October 19 to Nov 9 Grades 4-8  
P.A. Day Workshops October 25 (In the Studio) JK-5  
P.A. Day Workshops November 15 Grades JK-5

### March Break Workshops

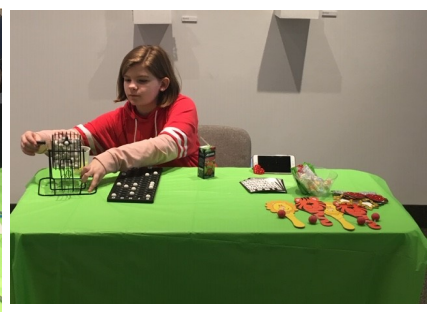
March 11 to 15 2019 Grades JK-5  
75 students took part over the five days, learning about a wide range of art, artists and media. The Patrick Thibert exhibition in the main space offered a wonderful opportunity for students to be inspired by and create in the main space. During the week two high school students, who regularly volunteer in our classes, also had the opportunity to try instructing as well. Throughout the week there was a ready group of high school volunteers lending their time, talents and amazing charade, bingo and go fish! skills to our program.

### Family Day (FREE Family Art Activities)

Monday February 18, 2019 11am to 3pm FREE art activities, games and more Grades JK-6 (accompanied by an adult)  
We welcomed more than 125 people for our Family Day open house. Participants enjoyed an exhibition based scavenger hunt, hands-on activities focused on the elements and principle of art, Bingo games and of course snacks! This type of free community event yields so many benefits for the Public Art Centre. For some it's the first time they are visiting us, for others it is an annual event their families look forward to each year. One thing is clear, this is a big target audience for what we do at the Public Art Centre and the return on this kind of investment is huge!

### Summer Programs

Daily Workshops July 2-5 Ages 5-11  
Rock, paper, Scissors July 8-12 Ages 5-11  
Sculpture & Assemblage July 15-19 Ages 5-11  
Art Movements July 22-26 Ages 5-11







Medium a Day July 29 - August 2 Ages 5-11  
 Daily Workshops August 6-9 Ages 5-11  
 Games, Toys, Books August 12-16 Ages 5-11  
 Daily Workshops August 19-23 Ages 5-11

## Adult Workshops and Classes

Watercolour with Heather Keating, February 7 to March 14, 2019  
 Petals & Paint( Harris Flower Farm and Heather Keating) Thursday June 6, 2019  
 EAT DRINK CREATE, Friday May 3, 2019  
 Watercolour with Heather Keating, April 11-25 & May 9-23, 2019, 2019  
 Petals & Paint August 15, 2019 (Harris Flower and Heather Keating)  
 Watercolour with Heather Keating October 17 to November 21, 2019  
 Felted Workshop Instructor Linda Armstrong Sunday November 24, 2019 10-4  
 EAT DRINK CREATE November 29, 2019

## School Programs

Over 1200 students from St. Thomas and Elgin County participated in the Public Art Centre's School Programs, which offered young people from JK to grade 12 immersive opportunities to explore new ideas, develop their creativity, collaborate with their peers and engage in critical thinking about the world around them.

We would like thank our partners in education: Dowler Karn—Fueling Communities, for assisting in the transportation of students and the Kinsmen Club of St. Thomas for supporting the hands-on activities during the tours.



## Elgin County Libraries

Since 2015 the Public Art Centre has partnered with the Elgin County Libraries to bring several of our programs off-site. These programs are self-guided and focus on well known artists and art movements. They provide an opportunity for learning as well as creating art. These lessons have been prepared by the Art Centre and will rotate between all of the libraries in the county.

A new series of art education boards are being distributed throughout the Elgin County Libraries. Thank you to Sandra Poczubut for partnering with the Public Art Centre in order to facilitate these programs.





## School Within a School

Grade 7 and 8 students from Summers' Corners Public School are taking part in a program called School within a School. Their focus is *Communication, Creativity, Critical Thinking & Collaboration*. In November all 45 of the participating students visited the Public Art Centre, and throughout the coming year a group of these students will return for three more visits that will allow them to play an active role in programming, hands-on activities and learning about art history.

## Environmental Collaborative Opportunities

Grade 7 and 8 students from New Sarum Public School, P.E. Trudeau, Kettle Creek Public School and Summers' Corners Public School are taking part in a program called *Environmental Collaborative Opportunities*. This program involves students reading the book *Hawk* by Jennifer Dance in Dec/January, building bird houses as part of Project FeederWatch and as a conclusion to their program, they will be visiting the Art Centre this month to view Ron Milton's exhibition *So You Want to be a Bird* and have the chance to speak with Ron Milton about his work and how it fits into the their program.

## Specialized High Skill Major Program

On March 26, thirty students from Parkside and AVSS, participating in the SHSM program, used the Art Centre's studio for an oil painting workshop taught by John Anderson, the Education Manager at Curry's

## Pathfinders

On the evening of March 20 a small, but energetic group of Pathfinders visited the Public Art Centre for a tour. The tour included the main space, a hands-on sculpture lesson and a tour of the permanent collections and all of the prep that was going on for the current exhibition. In doing all of these things the group was able to achieve an art as well as a museum badge.

## Clark McDougall Scholarship

In June the Art Centre accepted eight submissions for the annual Clark McDougall scholarship. Peter Lemon, of the McDougall Group reviewed the submissions and awarded both scholarships: the Fine Arts Scholarship was awarded to: Alyssa Brunsdon, Parkside Collegiate Institute The Visual Arts Scholarship was awarded to: Seth Kuiper, Central Elgin Collegiate Institute

## Winter Blues

Winter Blues is offered as a preventative program designed to encourage people to get out and socialize during the winter months, to beat the winter blues.







## West End Wednesday

On Wednesday May 15, the Public Art Centre hosted our first West End Wednesday. This community program is offered as an opportunity for individuals working in the west end to come together and enjoy lunch in the main gallery space. We had about 50 people (including the students from Summers Corners) show up.

This program is based on the idea that getting away from your desk and sharing a meal with others, makes you happier, and boosts your productivity. It also provides a wonderful occasion to share this current exhibition with the community. For those of us working in (and around) the west end, it's an opportunity to highlight the many services located in the west end, network a bit, build on existing collaborations and form new ones.

The Downtown Development Board, generously agreed to sponsor this program which allowed us to arrange for live music during the event, and Las Chicas donated coffee for us to offer our guests.

## Railway City Tourism Arts Crawl

The Railway City Arts Crawl is a **FREE** winter event celebrating local arts and culture.



## Horton Street Market

In July the Art Centre set-up shop at the Horton Street Market to offer a kids art activity and a raffle. The visual impact of kids strolling around the market in full face masks was amazing as was the interest in creating the masks. Thank you to all the board members who volunteered their time (on a very hot morning).

## Railway Tourisms, After Dark Music Series

On July 25th, the Art Centre was the featured venue in Railway Tourisms, After Dark music series. The Pairs, a very talented quartet from London, performed to a sold out crowd.



## City of St. Thomas Public Art Committee

The Public Art Centre participates with representation on the City of St. Thomas Public Art Committee. This committee is responsible for reviewing new acquisitions / gifts of artwork, care for existing and purchasing new works through policy and defined terms of reference.

## Elgin County Tourism Elgin Arts Trail

A member of the Elgin Arts Trail since 2008, the trail offers visitors year long opportunities to discover Elgin County and its artists, galleries, collectives and studios.





## Culture Days Ontario

On Saturday, September 28 the Public Art Centre took part in Culture Days. Culture Days is an annual, national celebration of arts and culture that aims to stimulate understanding, appreciation and exploration of arts and culture - so that every person has a deeper connection with art and culture in their communities. The opening reception for In View of the Artist, provided the focal point for our Culture Days weekend with nearly 100 people attending to meet with the artists and enter into a dialogue with them about their art.



## Doors Open St. Thomas - Railway City Tourism

The Ontario Heritage Trust works with communities across the province to open the doors, gates and courtyards of their unique and most fascinating cultural sites so you can explore the stories inside. On Saturday, October 5 the Public Art Centre took part in Doors Open. This year's event locally was a Spooky St. Thomas theme. We presented a screening of the German Expressionist film *Nosferatu* as well as *Nosferatu* paper crafts, and a trick or treat meet and greet with several of the artists featured in the current exhibition. 107 people stopped by to take part.

## New Comers Open House

On Sunday, October 6 Suzanne Baehr was the Public Art Centre's representative at a New Comers open house presented at Knox Church. Those in attendance were gifted with postcards offered by the Public Art Centre as well as information about our services provided by Suzy.

## St. Thomas Chamber Small Biz Expo

## Fanshawe College

The Public Art Centre instructed a lesson on Supporting Creative Expression through Art, to the first year Early Childhood Education students at Fanshawe College. This year we are inviting the students to visit the Art Centre to include the viewing of art in the lesson.

## Facility

Over the year, the Public Art Centre has been very busy with not only our own events but several community events and numerous facility rentals.

In October we welcomed almost 600 trick-or-treaters through for the DDB's annual Pumpkin Prowl and during the weekend of November 1, 2 and 3 the Art





Centre welcomed more than 800 visitors, taking part in the Rotary Tour of Homes who stopped by to look around and enjoy some refreshments.

### **Rentals (attendees 1892)**

Thames Valley District School Board  
St. Thomas District Chamber of Commerce  
Downtown Development Board  
Women's Committee of STEPAC  
Elgin Business Resource Centre International Women's Day  
Reith and Associates  
St. Thomas Elgin Executive Association (Weekly rental)  
London & St. Thomas Association of Realtors  
Elgin St. Thomas Alzheimer Society  
Out There Creative Therapy  
Port Stanley Artist Guild  
St. Thomas Elgin Alzheimer "Dementia Friendly Launch"  
St. Thomas Elgin Medical Association  
Local Immigration Partnership  
Elgin Business Resource Center "The Pitch" November 20, 2019  
Elgin Business Women's Network  
Graham Scott Enns  
Locke Insurance  
City of St. Thomas Honours and Awards  
County of Elgin

### **Open day/evening events (on and offsite)**

Shop Hop DDB  
Rotary Christmas Tour of Homes November 8-10  
New Comers Event Know Presbyterian Church (attendees 55)  
St. Thomas District Chamber of Commerce Small Biz Expo (attendees 150)  
Pumpkin Prow Downtown Development Board (attendees 885)

### **Co-creation of concert, theatre performance, musicians Events (attendees 1113)**

Winter Blues Central Community Health Centre  
Every 3rd Sunday from January to April  
Railway City Tourism Art Crawl, Feb 22,23, 2019 (Young Musician Performers), Sun shiners, Alex Di-Cristoforo (866)  
"FACE IT" installation and performance by Celeste Fillos (Waterworks Park and Elgin County Railway Museum)

### **Partnerships**

London Catholic District School Board  
Home School Groups  
Thames Valley District School Board  
Port Stanley Artist Guild







St. Thomas Art Guild  
 Elgin Counseling and Mediation  
 HOPE Hospice Outreach Programs Elgin Grief Awareness  
 Day November 21, 2019  
 Canadian Mental Health Association Art programs  
 Fanshawe College, Early Childhood Education, Seminar and  
 activities with students Out reach  
 Museum London Docent Association

## Volunteering at the Public Art Centre

907 hours volunteered at the Public Art Centre in 2019.



Volunteers provide support to our community at the St. Thomas – Elgin Public Art Centre.

Our youth volunteer program has been well supported by students starting high school and continuing through their education from St. Thomas and Elgin County. Youth volunteers are fulfilling much more than their required high school community service hours. Many of our volunteers started as students of the Public Art Centre, and have enthusiastically decided to continually give their time to support and encourage the next generation of creative students. Ten new youth volunteers have joined our team this year and we have retained twelve volunteers, some of which have volunteered for up to four years.

Adult volunteers greatly support the St. Thomas – Elgin Public Art Centre by volunteering their time and skills from assisting visitors, to provide support in the classroom, collection management, exhibition installations, maintenance, fundraisers and events.



This year, during our 50th Anniversary commemoration, we celebrated our longest serving volunteer, Sharon Little. Sharon has served as a founding member and as one of the very first Directors of the Public Art Centre. Her role as Women's Committee member over the last 50 still goes strong today. Thanks you Sharron Little!

## Gift Shop

Our gift shop at the Public Art Centre hosts 47 local artists, artisans, authors, poets and potters.

Our community supports the Art Centre gift shop by choosing to purchase locally made art and quality hand made gifts. Each item in the gift shop is hand selected, selling the most unique items from our community. The gift shop is consignment based and raises funds for the Art Centre; it provides the opportunity for local artists, authors, and artisans to sell their work in our community. When visitors shop at the Art Centre they learn the story behind each unique piece from how it was made to the artist who made it. Visitors buy hand made works from our gift shop artist for a truly local purchase.



**The artists, writers, illustrators, potters, carvers, jewellery designers and artisans in our gift shop:**

Monica Abeid  
Josepha van den Anker  
Linda Armstrong - EcoLamb  
Andrea Bodo  
Peter Bloch - Hansen  
Joel Berry  
Julie Berry  
Catherine Craig - Clayworks  
Emmi Coburn  
Ann-Marie Cheung  
Mandy Carter  
Pat Curtis  
Charlie Gendron  
Kellen Devos  
Sherri Van Dixhoorn

Everwoods  
Erika Fuller  
Herman Goodden  
Robin Grindley  
Paula Plater-Galloway  
Chris Golding  
Shelby Hayward  
Betty Harmsen  
Elizabeth Kusinski  
Grayden Laing  
Terry Lanning  
Catherine Marshall  
Ethel Mitrovic  
Annette Martin  
Patricia MacPherson  
Crystal McMaster  
Candy McManiman  
Frank Profheno - Nan-Sea Produc-

tions  
Alice Price-Vermulen  
Denyse Gervais Regan  
Larry Russell  
Judy Ross  
Jan Row  
Jeff Suchak  
Aganetha Sawatzky  
Joseph Sawicki  
Susan Tanton  
Katelyn Tippin  
Arale Vallely  
Sarah Van Pelt  
Laura Woermke  
Brian Wilsdon

## **Special Events / Fundraising**

### **REDTAIL COCKTAIL PARTY & SILENT AUCTION**

held on Saturday May 25, 2019 in the club house of the Redtail Golf Course. This sold out event features a traditional cocktail party and silent auction. Auction items were generously donated by many local businesses. We thank our sponsors and our returning emcee Andrew Buttigieg.

### **Annual Art Auction**

Held the first Friday in November for over 35 years. This year, the event took place on Friday November 1 and featured over 88 works of art in the live and silent auction. Al Hughson, our auctioneer, entertained the sold out crowd while our Emcee, Councilor Steve Peters kept everyone on task. A very big thank you to our event sponsors, generous local artists and everyone who purchased a ticket!

## **Canada Summer Jobs**

In 2019, The Public Art Centre welcomed two students through the Canada Summer Jobs grant. Shelby Hayward, our Summer Art Instructor and Blaire McKenzie, Studio Assistant, ran an fantastic eight week art camp program. We thank them for their dedication and wish them luck with their future endeavors.





## Permanent Collection

The St. Thomas-Elgin Public Art Centre's Permanent Collection is one of the largest and most significant in the St. Thomas and Elgin County region, made up of approximately 1897 artworks of local, regional, national and international origin in a variety of media, with special emphasis on contemporary and historical Canadian art, - in particular Canadian - and on the artists associated with St. Thomas and Elgin County. The historical component of the Collection is based on approximately 400 works by local artists from the 19th and 20th century, with content that demonstrates our important history, which includes, oil paintings, prints, sculpture and watercolours. Several major gifts of artwork have been made to the Collection, including the St. Thomas-Smith and Clark McDougall works and through a purchase of the artwork from Alma College.

## Canadian Cultural Property Government of Canada Protecting our Heritage

Approximately 180 works in the permanent collection has received the status of "Canadian Cultural Property". As a A1 rated gallery, the art centre has the duty and responsibility to protect these works. Cultural property is of outstanding significance and national importance with a view to protect and preserve significant examples of Canada's artistic, historic, and scientific heritage. Works include local artist Ron Kingswood, Clark McDougall, Walther Redinger, Ed Zelenak, Ross Reverdy Osgoode to name a few.

Elgin County Museum: The Public Art Centre will participate in the "Museums of Elgin County Database" This innovative database is one of only a few in Canada to offer on-line collaboration between area museums through use of high quality software that otherwise might not be available to smaller museums on a stand-alone basis. It is hosted and supported by the County's Information Technology department and there is no cost to partner museums to participate. The data base plays a key role in encouraging collaboration between museums serving the County.

## 2019 Acquisitions

### Janine Leroux-Guillaume

*Les gestes des temps nouveaux*, 1984  
4/45, Woodcut  
46x56cm

*La main des saisons*, 15/8/60  
10/15 Aquatint  
50x65cm

*Variation Brumaire*, 11/11/76  
É.A 2 Woodcut  
57x38cm



Alfred Laliberté



Janine Leroux-Guillaume



Stanley Lewis

*Écran pour une naissancem*, 14/12/87

6/30, Woodcut  
50 x 66cm

*Les feux convergents*, 1977

25/35 Aquatint  
66 x 50cm

*La marche des scarabées*, 3/7/78

13/55 Mezzotint - burin  
50 x 66cm

*Une feuille se promène sur l'eau*,

1982/7 Etching  
57x 57cm

*Napiwa et les engoulvents*, 28/2/87

22/45, Mezzotint  
62 x 47cm

*Lichen au glacier*, 1969

É.É., Aquatint - burin  
65x 48cm

*Cette jungle qu'est la vie*, 1993

É.É, Dry point - burin  
56 x 77cm

*Un pas dans l'avenir*, 2/12/69

2/35, Mezzotint - burin  
56.5 x 76cm

*Métamorphose*, 18/8/67

3/36, Woodcut  
56.5 x 76.5cm

*Soleil en bataille*, 30/3/74

25/50, Woodcut  
64,.5 x 50.5cm

*Parterre de granit*, 17/6/63

É.A. no 4 ,Woodcut  
48x 33cm

*Les cocons de verre*, 8/2/62

1/9, Mezzotint - burin  
50 x 60.5cm

## **Stanley Lewis**

*A Memory*, 1972

17/45, Stone cut  
61.5 x 46cm

*Imprisoned Poet* , 1973

15/40, Stone cut  
61.5 x 46cm

*Pollution*, 1972

5/35, Stone cut  
61.5 x 46cm

*Inner light* , 1972

31/40, Stone cut  
61.5 x 46cm

*Penetration*, 1973

28/40, Stone cut  
61.5 x 46cm

*Prison Graffiti III*, 1975

19/45, Stone cut  
61.5 x 46 cm

*Confinement*, 1975

27/45, Stone cut  
61.5 x 46cm

*Tree Spirit*, 1977

29/75, Stone cut  
43.5 x 31cm

*Tree Spirit II*, 1977

29/75, Stone cut  
43.5 x 31cm

*Tree Spirit III*, 1977

29/75, Stone cut  
43.5 x 31cm

*Tree Spirit IV*, 1977

29/75, Stone cut  
43.5 x 31cm

*Tree Spirit V*, 1977

29/75, Stone cut  
43.5 x 31cm

*Tree Spirit VI*, 1977

29/75, Stone cut  
43.5 x 31cm

*Coupe*, 1963

Marble  
28cm x 38cm x 2.3 cm

*Apparition*, 1972

17/40, Original Stonecut print  
61x 46cm

*Detachment*, 1972

17/40, Original Stonecut print  
61x 46cm

*Two Figures*, 1972

22/40, Original Stonecut print  
61x 46cm

*Withdrawal*, 1972

17/40 Original Stonecut print  
61x 46cm

*Passage of Time*, 1972

18/40, Original Stonecut print  
61x 46cm

*The Aged One*, 1972

17/45, Original Stonecut print  
61 x 46 cm

*Enlightment*, 1972

18/40, Original Stonecut print  
61 x 46 cm

*Separation*, 1972

17/40, Original Stonecut print  
61 x 46 cm

*Head in space*, 1972

17/45, Original Stonecut print  
61x 46cm

*Into the Firmament*, 1972

17/45, Original Stonecut print  
61 x 6 cm

*Standing Figure*, 1972

17/40, Original Stonecut print  
61x 46 cm

*Assassin*, 1972

17/40, Original Stonecut print  
61x 46cm

*Influence of Space*, 1972

17/40, Original Stonecut print  
61x 46cm

*Extension*, 1972

17/40, Original Stonecut print  
61x 46cm

*Standing Women*, 1972

17/40, Original Stonecut print  
61 x 46 cm

*Departure*, 1972

17/40, Original Stonecut print  
61 x 46 cm

*Melancholy of Departure*, 1972

17/40, Original Stonecut print  
61 x 46 cm

*Illumination*, 1972

19/40, Original Stonecut print  
61 x 46 cm

*Head with Celestial Light*, 1972

27/100, Original Stonecut print  
61x46cm

*The Drunker*, 1972

18/40, Original Stonecut print  
61,0 x 46,0 cm

*City Portrait I*, 1974

24/45, Original Stonecut print  
61,5 x 46,0 cm

*City Portrait II*, 1974

24/45, Original Stonecut print  
61.5 x 46 cm



*City Portrait III*, 1974  
24/45, Original Stonecut print  
61.5 x 46 cm

*City Portrait III*, 1974  
24/45, Original Stonecut print  
61.5 x 46 cm

*City Portrait IV*, 1974  
24/45, Original Stonecut print  
61.5 x 46 cm

*City Portrait V*, 1974  
24/45, Original Stonecut print  
46 x 61.5 cm

*City Portrait VI*, 1974  
24/45, Original Stonecut print  
46 x 61.5 cm

*City Portrait VII*, 1974  
24/45, Original Stonecut print  
61.5 x 46 cm

*City Portrait VIII*, 1974  
24/45, Original Stonecut print  
46 x 61.5 cm

*City Portrait IX*, 1974  
24/45, Original Stonecut print  
61.5 x 46 cm

*City Portrait X*, 1974  
24/45, Original Stonecut print  
46 x 61.5 cm

*City Portrait XI*, 1974  
24/45, Original Stonecut print  
46 x 61.5 cm

*City Portrait XII*, 1974  
24/45, Original Stonecut print  
46 x 61.5 cm

*City Portrait XIII*, 1974  
24/45, Original Stonecut print  
61.5 x 46 cm

*City Portrait XIV*, 1974  
24/45, Original Stonecut print  
61.5 x 46 cm

*City Portrait XV*, 1974  
24/45, Original Stonecut print  
61.5 x 46 cm

*City Portrait XVI*, 1974  
24/45, Original Stonecut print  
61.5 x 46 cm

*City Portrait XVII*, 1974  
24/45, Original Stonecut print  
61.5 x 46 cm

*City Portrait XVIII*, 1974  
24/45, Original Stonecut print  
61.5 x 46 cm

*City Portrait XIX*, 1974  
24/45, Original Stonecut print  
46 x 61.5 cm

*Creation I*, 1982  
28/35, Original Stonecut print  
46 x 61.5 cm

*Creation II*, 1982  
28/35, Original Stonecut print  
46 x 61.5 cm

*Creation III*, 1982  
28/35, Original Stonecut print  
46 x 61.5 cm

*Creation IV*, 1982  
28/35, Original Stonecut print  
46 x 61.5 cm

*Creation V*, 1982  
28/35, Original Stonecut print  
46 x 61.5 cm

*Creation VI*, 1982  
28/35, Original Stonecut print  
46 x 61.5 cm

*Creation VII*, 1982  
28/35, Original Stonecut print  
46 x 61.5 cm

*Primal Dust I*, 1983  
29/35, Original Stonecut print  
46 x 61.5 cm

*Primal Dust II*, 1983  
29/35, Original Stonecut print  
46 x 61.5 cm

*Primal Dust III*, 1983  
29/35, Original Stonecut print  
46 x 61.5 cm

*Primal Dust IV*, 1983  
29/35, Original Stonecut print  
46 x 61.5 cm

*Primal Dust V*, 1983  
29/35, Original Stonecut print  
46,0 x 61,5 cm

*Primal Dust VI*, 1983  
29/35, Original Stonecut print  
46,0 x 61,5 cm

*Primal Dust VII*, 1983  
29/35, Original Stonecut print  
46,0 x 61,5 cm

*Primal Dust VIII*, 1983  
29/35, Original Stonecut print  
46,0 x 61,5 cm

*Primal Dust IX*, 1983  
29/35, Original Stonecut print  
46,0 x 61,5 cm

*Primal Dust X*, 1983  
29/35, Original Stonecut print  
46 x 61.5 cm

*Primal Dust XI*, 1983  
29/35, Original Stonecut print  
46 x 61.5 cm

*Primal Dust XII*, 1983  
29/35, Original Stonecut print  
46 x 61.5 cm

*Primal Fusion I*, 1983  
2/35, Original Stonecut print  
46 x 61.5 cm

*Primal Fusion II*, 1983  
2/35, Original Stonecut print  
46 x 61.5 cm

*Primal Fusion III*, 1983  
2/35, Original Stonecut print  
46 x 61.5 cm

*Primal Fusion IV*, 1983  
2/35, Original Stonecut print  
46 x 61.5 cm

*Primal Fusion V*, 1983  
2/35, Original Stonecut print  
46 x 61.5 cm

*Primal Fragment I*, 1983  
3/35, Original Stonecut print  
61.5 x 46 cm

*Primal Fragment II*, 1983  
3/35, Original Stonecut print  
61.5 x 46 cm

*Primal Fragment III*, 1983  
3/35, Original Stonecut print  
61.5 x 46 cm

*Primal Fragment IV*, 1983  
3/35, Original Stonecut print  
61.5 x 46 cm

*Primal Fragment V*, 1983  
3/36, Original Stonecut print  
61.5 x 46 cm

*Primal Rhythm I*, 1983  
20/35, Original Stonecut print  
61.5 x 46 cm



*Primal Rhythm II*, 1983  
20/35, Original Stonecut print  
61.5 x 46 cm

*Primal Rhythm III*, 1983  
20/35, Original Stonecut print  
61.5 x 46 cm

*Primal Rhythm IV*, 1983  
20/35, Original Stonecut print  
61.5 x 46 cm

*Primal Rhythm V*, 1983  
20/35, Original Stonecut print  
61.5 x 46 cm

*Primal Balance I*, 1983  
4/35, Original Stonecut print  
61.5 x 46 cm

*Primal Balance II*, 1983  
4/35, Original Stonecut print  
61.5 x 46 cm

*Primal Balance III*, 1983  
4/35, Original Stonecut print  
61.5 x 46 cm

*Primal Balance IV*, 1983  
4/35, Original Stonecut print  
61.5 x 46 cm

*Primal Balance V*, 1983  
4/35, Original Stonecut print  
61.5 x 46 cm

*Primal Touch I*, 1983  
19/35, Original Stonecut print  
46 x 61.5 cm

*Primal Touch II*, 1983  
19/35, Original Stonecut print  
46 x 61.5 cm

*Primal Touch III*, 1983  
19/35, Original Stonecut print  
46 x 61.5 cm

*Primal Touch IV*, 1983  
19/35, Original Stonecut print  
46 x 61.5 cm

*Primal Touch V*, 1983  
19/35, Original Stonecut print  
46 x 61.5 cm

*Primal Touch VI*, 1983  
19/35, Original Stonecut print  
46 x 61.5 cm

*Primal Touch VII*, 1983  
19/35, Original Stonecut print  
46 x 61.5 cm

*Primal Touch VIII*, 1983

19/35, Original Stonecut print  
46 x 61.5 cm

*Primal Touch IX*, 1983  
19/35, Original Stonecut print  
46 x 61.5 cm

*Primal Touch X*, 1983  
19/35, Original Stonecut print  
46 x 61.5 cm

## Walter Redinger

*Figure Bed #4*, 1986-89  
Graphite on paper,  
31x37"

## Candy McManiman

*Recycle - Evolution*, 1999  
Oil on canvas  
4'x3'

*Idle/idol Exchange*, 1999  
Oil on canvas,  
24"x30"

## Jean-Paul Riopelle

*Jute V*, 1967  
45/75, Hand coloured-lithograph  
75 x 110cm

*Feuille III*, 1967  
45/75, Hand coloured-lithograph  
75x 110,0 cm

## Alfred Laliberté

*La poésie*, 1925  
Original plaster  
23 cm x 30cm x 19cm





## Board of Directors 2018-2019

PAST PRESIDENT: Tom Hughes  
PRESIDENT: Suzanne Baehr  
TREASURER: Meghan Vreman  
RECORDING SECRETARY: Laura Woermke

### Directors:

Bethany Green  
Amy Sloan  
Dang Ho  
Debra Bagshaw  
Grayden Laing  
Neil Hubert  
Joan Dennis  
Jim Herbert (City Rep.)  
Alternate Jeff Kohler (City Rep.)  
Dominique Giguère (County Rep.)

## Committees

**Executive Committee** (standing)  
Past President Tom Hughes  
President Suzanne Baehr  
Treasurer Megan Vreman

## Acquisitions Committee

(standing)  
Chair Bethany Green  
Kevin Morrell  
Gerald Pedros  
Laura Woermke

## Fundraising Committee

(standing)  
Amy Sloan  
Suzanne Baehr  
Bethany Green  
Sherri Howard  
Laura Woermke

## Finance Committee

Chair Suzanne Baehr  
Treasurer Meaghan Vreman  
Laura Woermke

## Membership Committee

Chair Deb Bagshaw  
Laura Woermke  
Neil Hubert

## Human Resource Committee

Chair Suzanne Baehr  
Tom Hughes  
Megan Vreman

## Sponsorship Committee

Laura Woermke  
Suzanne Baehr  
Amy Sloan

## Instructors / Guest Speakers

Heather Keating  
Katelyn Tippin  
Olive McEnvue  
Shelby Hayward  
Blair MacKenzie  
Catherine Elliot Shaw  
Patrick Thibert  
Ron Milton  
Linda Armstrong

## Administration

Laura Woermke, Executive Director / Curator  
Sherri Howard, Program Director  
Katelyn Tippin, Reception / Volunteer  
Peri Hayes, Part-time Reception  
Teagan Butler, Part-time Reception  
Catherine Craig, (Volunteer) Reception  
Ruth Wallace, (Volunteer) Reception  
Elizabeth Bouque  
Darlene Loyst, (Volunteer) Reception





## **Membership 2019**

### **Individual**

Josepha van den Anker  
Jane Atkinson - White  
Robin Baratta  
Clifford Barwick  
Susan Bassett-Gold  
Emily & Scott Bate  
Lynda Baughman  
Helga Bear  
Elizabeth Bourque  
Helen Bukor  
Cathy Burgoyne  
Mary Carnahan  
Gary Clarke  
Pat Clinton  
Patti Chochrill  
David Dale  
Dr. Sandy DeLuca  
Mary Donlan  
Jo Ann Dunn  
Jody Dunn  
Dawn Doty  
Carol Ewaskiw  
Don Ferguson  
Robin Lynn Fleming  
Patricia Fryer  
Gabi Fortin - Smith  
Sue Fortin - Smith  
Ray H. Galloway  
Lisa Gerrard  
Anne Gilbert  
Margaret Glover  
Beth Green  
Cornelia Greger  
Robin Grindley  
Mary Gullis  
Ali Harris

Timothy Hedden  
Meg & Mitch Highway  
Wendy Hepburn  
Dang Ho  
Margaret A. Horn  
Patrusia Hontar  
Joseph Hubbard  
Matt & Miranda Hughson  
Marion E. Hummel  
Debra Jackson-Jones  
Mary Jane Johnson  
Brooke Kewley  
Patrick Landsley  
Darlene Loyst  
Kathy Lyle  
Carol Mailing  
Diane Marcou  
Annette Martin  
Brian Masschaele  
Joyce Matthews  
Pat McCaig  
Stacy McCaw Wraight  
Catherine Craig & John McMahon  
Bob & Gail McNaughton  
Kathy & Dan McNeil  
Rosemary Norton  
Kathleen O'Dea  
Marion Orchard  
Margaret Patterson  
Alice Price-Vermeulen  
Elizabeth Raven  
Austin Robertson  
Taylor Robertson  
Eleanor Robson  
Jan Row  
Dianna Saddington  
Brenda Sheridan  
Lori Baldwin-Sands & Doug Sands

Shirley Shore  
Amy Sloan  
Chris Sloan  
Margie Snowsell  
Beth Stewart  
Anna Tanguay  
Patrick Thibert  
Katelyn Tippin  
Mary Louise White  
Pat White  
Harry Wilkinson  
**Family**  
Ardythe & Fred Anderson  
Janet Brody  
Jerome & Mary Jane Collins  
Diane Dobson  
Mary Dunn  
Hal & Pam Hedden  
Jane & James Hughes  
Paul Jenkins & Sandra Poczubut  
John Krygsman  
Ellen & John Luft  
Linda Maskel-Pereira & Christopher Pereira  
Minerva Art Gallery  
Dan Peterson  
Greg, Kate & Cameron Robertson  
Dennis Siren & Wendy Saby  
John & Lois Smith  
Bill & Linda Stevenson  
Andres & Catherine Villar  
Fanny Yeager  
Bev & Jack Yurek  
**Contributing**  
Linda Armstrong & Mark Enns  
Janet & Philip Ballantyne  
Betty Burrell - Beaudry  
Agnes Berko

Marguerite Buckland  
Jenny Couse  
Pat & Bob Curtis  
Joan & Darrell Dennis  
George & Lynn Disbrowe  
Lauree Dunlop  
Franky Ducharme  
Joanne Ferguson  
Joyce M. Ferguson  
Ted Gilchrist  
Barb & Bruce Green  
Eileen Grimley  
Kate & Art Gutmanis  
Bob Hammersley  
Bob & Mary Anne Heath  
Jim & Rita Herbert  
Wayne & Marg Howard  
Kim & Allan Hughson  
Dagny & Mary Beth Ingolfsrud  
Joan Janes  
Jean Johnson

Joel Keenleyside  
Bob Ketchum  
Ray & Evelyn Knight  
Roman Kuchmak  
Dr. Donald & Mrs. Gillian Lawrence  
Donald Leich & Gail McHardy-Leich  
Mike & Dana Lindsay  
Sheila Martin  
Steven McLarty-Payson  
St. Thomas Art Guild  
Maggie Richardson  
Marietta Roberts  
Larry A. Russell & Tamelynda Lux  
Andrew Sloan  
Rowena Spersrud  
Tony Stacpoole  
Susanne Steed & Jim Bundschuh  
Carole Watson  
Malcom & Monique Wood  
**Supporting**  
Susan & Richard Andrews

Suzanne Baehr  
Sine Herold  
Louise Ferriman  
Joan & Matt Janes  
Wayne & Maxine Kentner  
Sally & John Martyn  
Carolynne & Gary McLeod  
Catherine Elliot-Shaw & John D. Shaw  
Wendy & Dan Tippin  
Ian Tripp  
**Sponsoring**  
Carl & Debra Bagshaw  
John & Karen Hueston  
Sharon Little  
**Sustaining**  
Eric Bargenda & Ciabh McEvenue  
Ian Begg  
Brian & Mary-Ellen Bolt  
Candy McManiman  
St. Thomas Down Town Development Board  
Elgin Contracting and Restoration Ltd.





## Special Donations 2019

### In Memory of Kay Pocock

Marion & Jeffery Bentley  
Pat Clemons

### In Memory of Lenore Jones

Jay & Lorrie Fitcher

### In Memory of Bill Kish

Aina Berzins  
Antoinette Ciavarella  
Sheila Collins  
Raissa Dietl, Ari & Dave Stuart  
Angelo Fazzari  
Paul Henderson  
Judith C. Wheeler

### In Memory of Helen Roberts

Lynda Fox  
Mr. B Gloin & Margaret  
C.S. Hutchinson  
Sharon Little

## Women's Committee 2019-2020

Ardythe Anderson  
Suzanne Baehr  
Sue Bandeen  
Agnes Berko  
Mary Ellen Bolt  
Lynda Cosens  
Jennie Carswell  
Kathy Collier  
Joan Dennis  
Lynn Disbrowe  
Jo Ann Dunn  
Mary Dunn  
Carol Ewaskiw  
Joyce Ferguson  
Louise Ferriman  
Katheryn Frank  
Patricia Fryer

## Inspire A Student Campaign

Centennial Sports Club of St. Thomas Inc.  
Elgin Contracting and Restoration  
Kinsmen Club of St. Thomas  
Lions Club of St. Thomas  
Carolyne & Gary McLeod  
Nancy Moore  
Optimist Club of St. Thomas  
Talbot Trail Optimist Club  
The Port Stanley Artist Guild  
Williams Funeral Home Ltd.  
Dr. Malcom & Monique Wood

### Annual Giving

Betty Burrell-Beaudry  
Elgin Contracting and Restoration Ltd.  
Ray Galloway  
Sharon Little  
Steven McLarty-Payson  
Carolyne & Gary McLeod  
Candy McManiman  
Tony Stacpoole  
Wendy & Dan Tippin

## General Donation

Paul Baldwin  
Lori Chamberlain  
Catherine Ella  
Anne Gilbert  
Margaret Glover  
Cornelia Greger  
Kathlyn Hagerman  
Sine B. Herold  
Joan Janes  
Marietta Roberts  
Catherine Elliot Shaw & John D. Shaw  
Mrs. Pat White  
Paul Wynne

### Public Programming

Celeste Fiallos

### Permanent Collection

Barb Green  
Gerald Pedros

Barb Green  
Eileen Grimley  
Kathy Hagerman  
Mary Anne Heath  
Catherine Hedley  
Rita Herbert  
Margaret Horn  
Joyce Hughson  
Marion Hummel  
Mary Jane Johnston  
Nancy Johnson  
Evelyn Knight  
Sharon Little  
Susan Lyle  
Ellen Luft  
Carol Mailing  
Sheila Martin  
Lindi Manchen  
Pat McCaig

Virginia (Ginny) Nielsen  
Kathleen O'Dea  
Katherine Patterson  
Margaret Patterson  
Linda Maskel-Pereira  
Carole MaGrath  
Mary Helen Raynham  
Elizabeth Raven  
Eleanor Ryder  
Brenda Sheridan  
Laurie Shiell  
Shirley Shore  
Lynn Smith  
Margie Snowsell  
Anna Tanguay  
Doreen Trethewey  
Janet Willoughby  
Mary Louise White

## Sponsorship 2019

