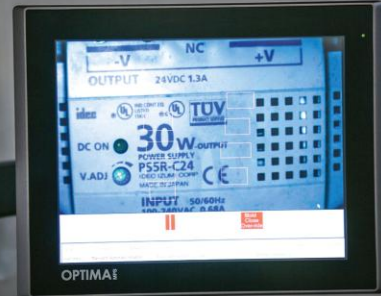


# MOLD PROTECTION WITH VISION

The OPTIMA Mold Protection System is designed specifically for the injection molding industry.

- Mold Protection
- Insert Verification
- Slider Verification
- Flash Detection



Featuring:

- 24 bit color inspection utilizing high resolution (1024h x 600v pixel) color/IR GigE CAMERA
- Slim-line 12" touch controller
- 4 camera capability built into standard system
- INTEL based system with <50ms typical inspection time
- SPI digital robot interface to molding machine
- 64 inspection window capability
- Inspection capability for:
  - ✔ Horizontal molding machines
  - ✔ Rotary table (up to 4 station) machines
  - ✔ Shuttle table machines
  - ✔ Upstream/Downstream of the molding machine



[www.realtime-technologies.ca](http://www.realtime-technologies.ca)  
Contact: [sales@realtime-technologies.ca](mailto:sales@realtime-technologies.ca)  
Phone: 519 577 0951

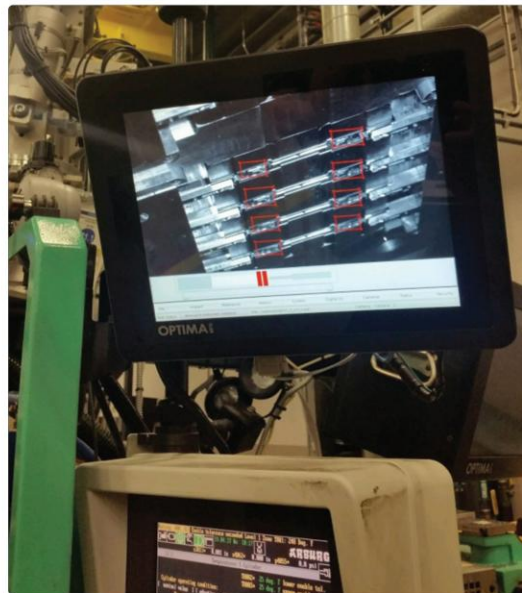
# MOLD PROTECTION WITH VISION

## IMM Interfacing

There are two methods for interfacing to Injection Molding Machines.

The simplest method is to use the standard SPI ROBOT interface. This is a straight digital interface where the molding machine provides signals to the OPTIMA such as “mold is open,” “ejector is forward/back” etc... The OPTIMA interlocks certain functions such as “mold closing” and “ejector forward/back,” functions. This method of interfacing is the simplest and most portable since the OMTIMA can be simply hooked up to any IMM with a SPI ROBOT interface in a matter of minutes.

Other digital interfaces available upon request.



[www.realtime-technologies.ca](http://www.realtime-technologies.ca)  
Contact: [sales@realtime-technologies.ca](mailto:sales@realtime-technologies.ca)  
Phone: 519 577 0951

