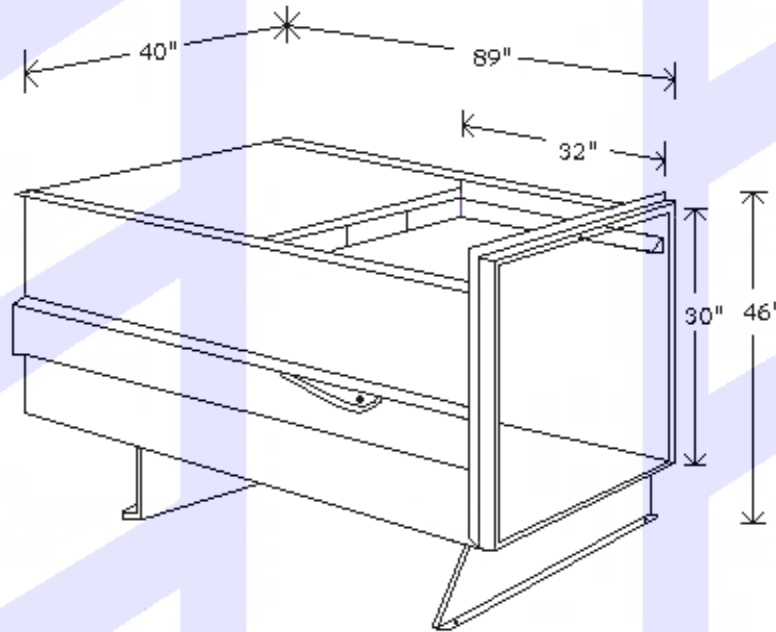


HYDRA-PAK Model 600



SPECIFICATIONS

MECHANICAL

Compactor Weight:	2,600 lbs
Charging Chamber Cap:	0.6 Cu. Yds.
Chamber Opening:	32" x 30" 36"
Ram Face Diameter:	24" x 36"
Ram Penetration:	8 inches

HYDRAULICS

Compaction Force:	19,000 lbs
Cycle Time:	40 seconds
Pressure:	1,500 psi
Pump Capacity:	5 G.P.M.
Cylinder:	4" bore
Oil Capacity:	10 gallons

CONSTRUCTION

Sides 1/4 inch, floor 3/8 inch
Hot Rolled Steel
Reinforced 3" x 6" x 1/4"

ELECTRICAL

Control System:	110 volts, 60 cycles
Motor:	5HP, 3 phase, 60 Cycles, Power Range- 208-416-230-460-575 volts
Control Panel:	Fully wired with fuse protection, on-off switch, start-stop button, on indicator light, full indicator light.

**Specifications are approximate and subject to change without notification.
Dimensions will vary with options in Compactor and Container size.**

HYDRA-PAK SYSTEMS LIMITED
2501 Beryl Road
Oakville, Ontario, L6J 7X3
Tel: 905-844-7844
email: look@hydrapaksystems.com