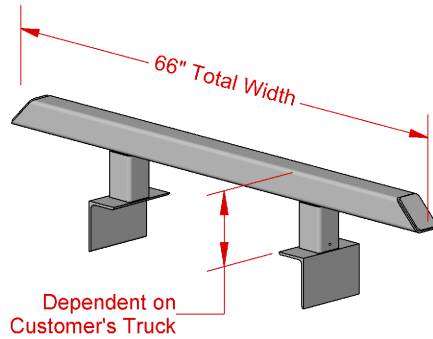


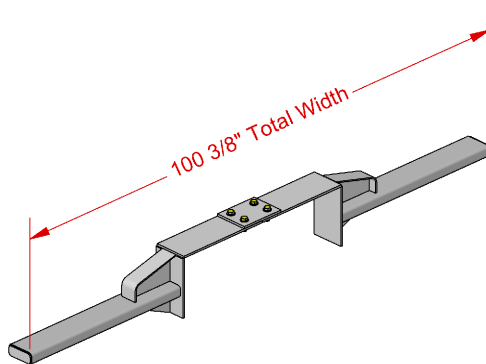
Item	Part Number	Description	Qty
-	VOL INNVX2767	Cab Guard Wiring Harness	-
1	CG-A02	Shovel Handle Base (Optional)	2
2	CG-A03	Axe Holder (Optional)	1
3	CG-A04	Wrapper Hook (Optional)	1
4	CG-A05	Axe Handle Holder (Optional)	1
5	CG-A06	Cabguard Reach Rest	1
6	CG-A07	Shovel Handle Holder (Optional)	1
7	CG-A11	Protective Grill	2
8	CG-A12	Protective Grill - Small	1
9	CG-A13	Spray Can Holder	1
10	ANS MF	Anser Mudflap	1
11	CG-005	Side 0.125" Checker Plate	2
12	CG-007	Bottom 0.125" Checker Plate	1
13	CG-A01-026	Reach Rest Support	1
14	FAU 625-4097	12" Dock Bumper	1
15	BCR 3023	Delux Reach Rest (Optional)	1
16	BCR 313	Reach Rest (Optional)	1
17	CG-GA1MK	Cab Guard Mounting Kit, U-Bolt	1
18	• CG-008	Bottom Bolt Flange	4
19	• TWD UB1 x 4 x 18.5ft	U-Bolt 1" x 4" x 18.5" Flat Top	4
20	• BCR UB.5x3	Rubber Pad 1/2" x 3"	2
21	• PFS FW81ZD	Washer, Flat, 1", GD8, Zinc Dipped	8
22	• PFS RHND8F1	Nut, Deep, GD8 1" UNF (U-Bolt)	8
23	VOL LC200	2" Clear Light - Sealed LED	1
24	VOL LG200	Grommet 2" - Open Round	1
25	VOL LR612-O	Oval Red Light - Sealed LED	4
26	VOL LA612	Oval Yellow Light - Sealed LED	4
27	VOL LG612	Grommet 6.5" - Open Oval - Rubber	8
28	VOL INNVX 4305	Utility Spot Lamp	4
29	DOR 00818	Weather Stripping 5/32" x 3/4" x 50'	1
30	PFS CSH8C14-4P	Capscrew, Hex 1/4" UNC x 4", GD8, Plated	7
31	PFS CSH8C14-412P	Capscrew, Hex 1/4" UNC x 4 1/2", GD8, Plated	4
32	PFS FW814ZD	Washer, Flat, 1/4" GD8, Zinc Dipped	22
33	PFS LNN8C14P	Nut, Nyloc, Hex 1/4" UNC	11
34	PFS CSH5C516-1P	Capscrew, Hex 5/16" UNC x 1", GD5, Plated	23
35	PFS FW8516ZD	Washer, Flat, 5/16, GD8, Zinc Dipped	23
36	PFS LNN8C516P	Nut, Nyloc, Hex 5/16" UNC	23
37	PFS CSH8C12-112P	Capscrew, Hex 1/2" UNC x 1 1/2", GD8, Plated	2
38	PFS CSH8C12-312P	Capscrew, Hex 1/2" UNC x 3 1/2" GD8, Plated	8
39	PFS LNN8C12P	Nut, Nyloc, Hex 1/2" UNC	10
40	PFS FW812ZD	Washer, Flat, 1/2", GD8, Zinc Dipped	20

Note:

Item 17 includes
items 18 through 22

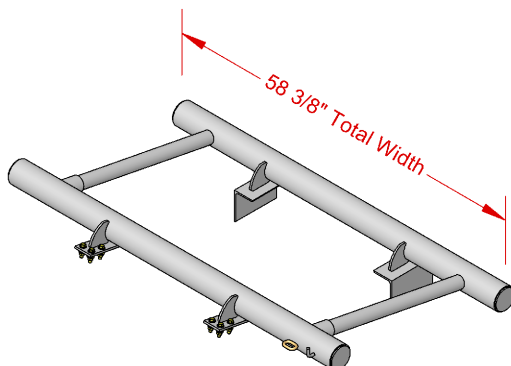


Part Number	Description
RO-A02	False Bunk



Part Number	Description
RO-A03	Wheel Rest

Part Number	Description
RO-A04	Quad Front H-Pipe



Optional Attachments:



RO-A04-005
4" Pipe Cradle Plate



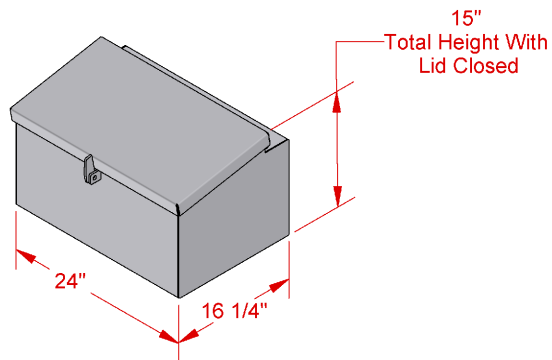
RO-A04-007
Truck Frame Rail Angle



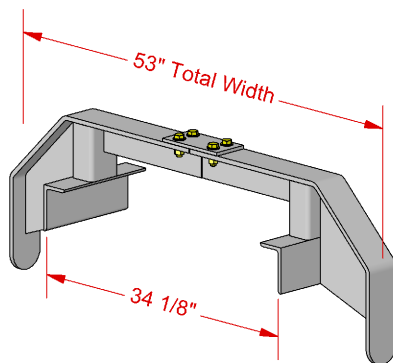
Mounting and Cradle Plate Assembly

RO-A04-006
Cab Guard Mounting Plate

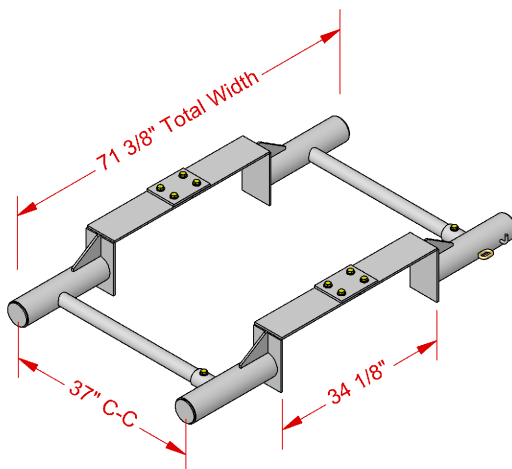
Capscrew, Hex 1/2" UNC x 2", GD8, Plated
Washer, Flat, 1/2", GD8, Zinc Dipped
Nut, Nyloc, Hex 1/2" UNC
4x



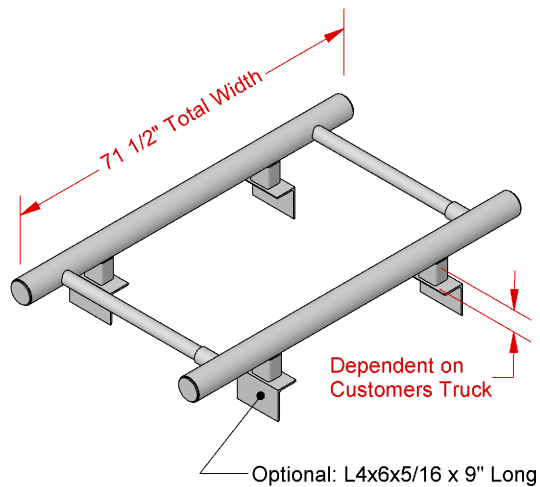
Part Number	Description
RO-A05	Anser Toolbox



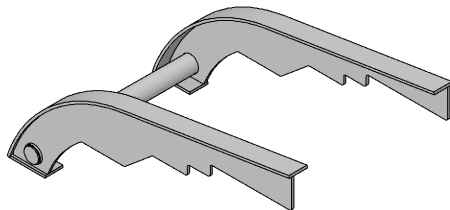
Part Number	Description
RO-A09	Truck Front Saddle



Part Number	Description
RO-A11	Dropped H-Pipe

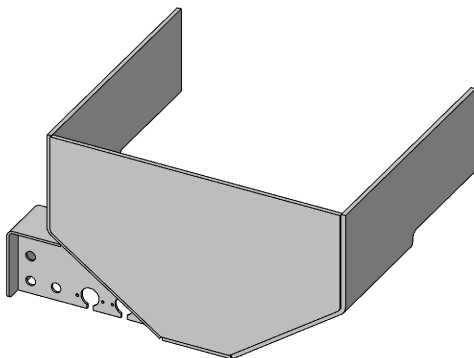


Part Number	Description
RO-A12	Rear H-Pipe



Part Number	Description
RO-A13	Low Bed Jump Up Ramp

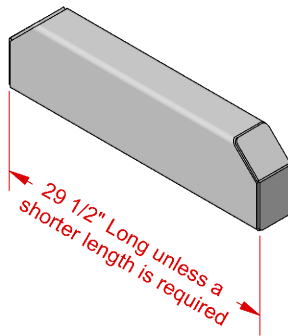
Sold only as a kit with loose parts unless truck is supplied
Length, width and height dimensions vary between trucks



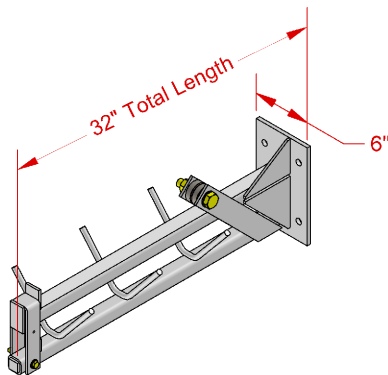
Part Number	Description
RO-A14	Drop Hitch Assembly

Sold only as a kit with loose parts unless truck is supplied

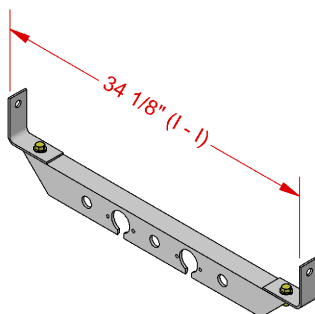
Rigouts - Pedestal Support Block, Sliding Tire Chain Hanger, Truck Plumbing Mount



Part Number	Description
RO-A17	Pedestal Support Blocks

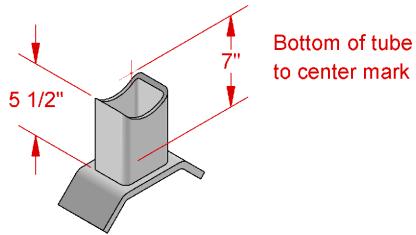


Part Number	Description
RO-A18	Sliding Tire Chain Hanger

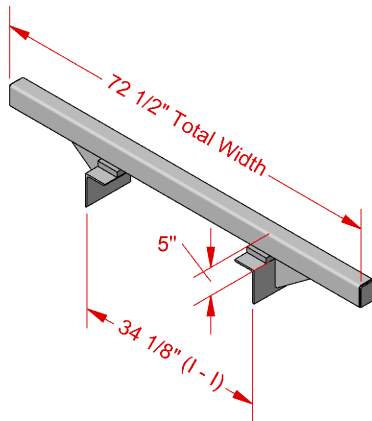


Part Number	Description
RO-A19	Truck Plumbing Mount

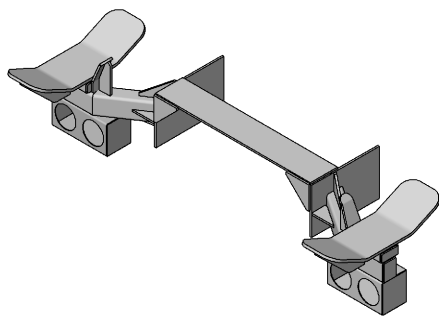
Rigouts - TA Pedestal, TA Wheel Rest, TA Rear Offset Wheel Rest, Mudflap Bracket



Part Number	Description
RO-A21	Tri-Axle Pedestal

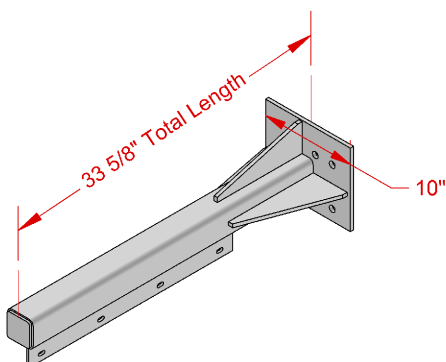


Part Number	Description
RO-A22	Tri-Axle Wheel Rest



Part Number	Description
RO-A23	Tri-Axle Rear Offset Wheel Rest

Dimensions will vary between trucks
Parts can be sold separately



Part Number	Description
RO-A27	Mudflap Bracket