



FARM • GARDEN • PET

Purity Service &
Supply

Congratulations
to all
Contributors
in the 84th Annual
Provincial Winter Fair
from

Purity Service & Supply

471 Okanagan Way, Kamloops BC, V2H 1G7

Ph: 250-372-2233 ♦ TF: 1-877-372-0282

www.purityfeed.ca

Full-service ranch, farm, home and garden centre
with horse & pet supplies and crop services

Purity Feed is a locally owned business serving the agriculture community since 1903.
With locations in Kamloops & Merritt

EST.
1903

84TH PROVINCIAL WINTER FAIR



**SEPTEMBER
23-26, 2022**

CIRCLE CREEK RANCH &
EQUESTRIAN CENTRE;
KAMLOOPS BC

**"IT'S
SHOW
TIME"**



WWW.PROVINCIALWINTERFAIR.COM



THANK YOU



The KXA Board and the Provincial Winter Fair Committee extends a HUGE thank you and are thrilled to receive one of the **BC Fairs, Festivals and Events COVID Recovery Grants** this year.

We are thrilled that people once again can enjoy local events with their families and friends; and are excited to invite the public back to the fair grounds to enjoy some wholesome family fun!

The support of this program will provide our event with a brighter future as we look forward to our 2023 Fair as we celebrate our 85th Anniversary!

Stay Tuned for 2023 details!



»SAVE THE DATE!«
SEPTEMBER 22-25, 2023!
FOR THE 85TH PROVINCIAL WINTER FAIR!

*We look forward to celebrating the anniversary with everyone—past & present!
 See you in 2023 at Circle Creek Ranch!*

WE WOULD LIKE TO THANK OUR SPONSORS:



BRONZE SPONSORS:



Pritchard 4-H Club



FRIENDS OF THE FAIR:

- BC Aberdeen Angus Association
- BC Hereford Association
- Beltrametti Farms
- Bonnie Phillips
- The Goertzen Family
- Emsland Insurance
- Four Corns Farm
- Heather Heron
- Hungry Rock Farm—Rosemary Gillis
- Kamloops This Week
- Overlander Women's Institute
- Re-Max—Brent Miller



WE WOULD LIKE TO THANK OUR SPONSORS:

DIAMOND SPONSORS:

Ministry of
Tourism, Arts,
Culture and Sport

PLATINUM SPONSORS:

Mark & Ellen Brown

GOLD SPONSORS:

Gray Group of
Companies



DR. DAVID RUSHKA INC.
GENERAL DENTISTRY
250-374-3353



Canada's Tournament Capital

THE HALLSTROM

Doug Haughton &
Southlands Ranch



FAMILY



ABBOTT
WEALTH MANAGEMENT INC.

SILVER SPONSORS:

CRAIG & SANDY
COOK



CANART CATTLE CO. LTD.
Livestock Order Buying and Transport



Highland Valley
Copper

Teck

THE CRAWFORD
FAMILY



WILLOW
RANCH



THE CIRIANI
FAMILY



84th ANNUAL

KAMLOOPS PROVINCIAL WINTER FAIR

TABLE OF CONTENTS

Welcome to Circle Creek Ranch!

Thank You to Our Gracious Hosts—
Colleen Meyer & Gord Leel



| | |
|--|----|
| City of Kamloops TNRD & Welcome | 4 |
| Greetings from the Grounds | 6 |
| 2022 Provincial Winter Fair Committee | 7 |
| Judges & Officials | 8 |
| List of Livestock & Creative Arts Contributors | 9 |
| Map of Grounds | 15 |
| Schedule of Events | 22 |
| 84 Years of PWF History | 30 |
| Buyer's Fact Sheet | 32 |
| Kid Zone Information | 33 |
| Settlement of Purchases | 34 |
| Rail Grade Procedure | 35 |
| Buyer's Processing Guide | 36 |
| Food Truck Vendors | 38 |
| Provincial Winter Fair Prize Money 2022 | 39 |
| Pioneer Event | 44 |
| We Would Like to Thank Our Sponsors | 45 |



#ItsShowTimePWF



**Ken Gillis, Chair
Thompson-Nicola Regional District**

On behalf of my colleagues on the Thompson Nicola Regional District Board of Directors, I am very pleased to welcome competitors and guests back to Kamloops BC, & Circle Creek Ranch for the "It's Show Time" 84th Annual Kamloops Provincial Winter Fair. It's been a long 2 years and the 4-Hers are happy to once again to see people in the stands to cheer them on!

The Provincial Winter Fair provides our youth with an important avenue in which to participate and compete against their peers through the 4-H program.

Kamloops & Knutsford are rich in agricultural history and provide the perfect setting to celebrate the Provincial Winter Fair's 84th year of keeping agricultural traditions alive.

Good Luck to all of the competitors!

**Visit Tourism Kamloops for Fun Family
Adventure Ideas**
www.tourismkamloops.com
1290 West Trans Canada Highway



"It's Show Time"

www.provincialwinterfair.com

#84thPWF



THANK YOU TO OUR SERVICE & EQUIPMENT SUPPLY DONORS



Ashcroft 4-H Club

Lazy FD Ranches &
Hay Sales



Jim Clarke



Southlands Ranch -C-



HORIZON NORTH



Colleen Meyer & Gordon Lee



Graydon & Scott Kellington
Colin Arduini

Dieter Dudy
John Willms
Watson Engineering
Bar J Bar Cattle Company
City of Kamloops



*Thank You to Our Volunteers, & Grounds and Set-Up Crew for picking up all this equipment
and preparing the grounds for Our Contributor and Visitor Arrivals!*

"Truly Farm To Plate"

The Devick Family
7230 Knouff Lake Road, Heffley Creek BC, V0E 1Z0
Phone: 250-571-4551
Email: rangelandmeats@hotmail.com

Local & Family Owned ♦ Provincially Inspected Class "A"
processing facility ♦ Custom Cutting Services, as well as
quality retail meat packs ♦ Currently Accepting Pigs, Sheep,
Cattle, & Goats.

*Rangeland
Meats*



A SPECIAL THANK YOU TO OUR PIONEER EVENT DONORS!

A big **THANK YOU** goes to the following Associations, Individuals, and Businesses for their contributions to the 2022 Pioneer Events:

Kamloops Stockmen's Association
Simmental Association of BC
Southlands Ranch—Doug Haughton
Cara Haughton

2022 PIONEER EVENT ENTRIES

SHEEP

1500 ADAMSKI, Peyton
 1501 LEE, Maeve
 1502 SAMPIETRO, Presley
 1503 TONDEVOLD, Morgan
 1504 SCHALLES, Presli

POULTRY

1520 LOGAN, Sara

BEEF

1530 BRANDON, Chance
 1531 BUCHER, Natalie
 1532 CAPUTO, Elliot
 1533 COMRIE, Portia
 1534 HALLSTROM, Jacey
 1535 KLEISSEN, Sylar
 1536 SCHMITKE, Alexis
 1537 WURTZ, Greta

What is the Pioneer Event?

It's an exciting event where we honour a past PWF Pioneer/Family, and then we watch in anticipation as 4-H members race through a skilled obstacle course to try and win their next year's market beef, lamb, or poultry project with funds donated by valued sponsors!

Come Join in the excitement on

SATURDAY, SEPTEMBER 25 2022

For the 2022 Pioneer Event!



THANK YOU



The Provincial Winter Fair Committee & the Kamloops Exhibition Association sincerely appreciates The City of Kamloops' 2022 Gold Sponsorship and Continued Support of the Fair and the Agricultural Community!



Welcome

The City of Kamloops is pleased to welcome competitors, judges, family, and guests to our City for the notable 84th Annual Kamloops Provincial Winter Fair.

The City of Kamloops realizes the importance of local agriculture to the economy. Kamloops and region are home to a diverse range of farming operations, many of which are open to the public.

Enjoy our warm hospitality during your visit to our great City.

Best of Luck to all the competitors!

Canada's Tournament Capital

Congratulations Provincial Winter Fair on Your 84th Winter Fair Celebration!
Glad to see "It's Show Time" once again here in the River City!



GREETINGS FROM THE GROUNDS

It is that time of year again - the leaves are changing, the mornings are cooling off, which must mean it is time for the 84th annual Provincial Winter Fair (PWF) in Kamloops.

We are fortunate to host our fair on the traditional lands of the Tk'emlúps te Secwépemc people at the Circle Creek Ranch & Equestrian Center in Kamloops BC.

Our year-end fair is always exciting as it marks the culmination of a year of hard work for all of our 4-H members with support of their families. This year, we will have exhibits displayed from Friday morning to Sunday evening including: beef, sheep, photography, poultry, and horse.

Please join us Sept 23rd-26th to support all of our 4-H members who compete throughout the weekend for ribbons, prize money, banners and the coveted belt buckles.

The locally raised animals and photography projects will be available for purchase on Monday September 26th at 9:00 am. Please join us and bid on some great 4-projects to hang on the wall or fill your freezer.

I would like to take a moment to recognize our sponsors and volunteers who generously donate funds, equipment, fuel, and time to help make our fair enjoyable and exciting for our members and guests.

The Provincial Winter Fair is part of the Buy BC Fair community, which celebrates nutritious meals grown from our very own backyard, while supporting local farmers and producers, communities and the environment at the same time.

We are excited to have the public back on the fairgrounds learning about the 4-H program, our members and their projects as well as our contributions to local agriculture.

Good Luck to everyone competing and we hope to see a supportive crowd at the 84th Annual Provincial Winter Fair!

Jayne Hillstrom

Interim-Chairperson, Provincial Winter Fair Committee

Souvlaki Sirloin Beef Meatballs & Vegetable

To round out these dinners, with a delicious Greek Vegetable Sauté or Greek Salad, and your favourite creamy Greek Salad Dressing.

Prep: 10 mins

Cook: 15 mins

Yields: Makes: 4 servings

*Source: Canadian Beef—Recipes
www.canadabeef.ca

Ingredients

- 1 lb (500 g) Lean Ground Beef Sirloin or Chuck*
- ¼ cup (50 mL) fresh or dried bread crumbs
- ¼ cup (50 mL) crumbled feta cheese (optional)
- 1 small onion, finely chopped
- 1 tsp (5 mL) dried oregano leaves
- 1 lightly beaten egg
- ¼ tsp (1 mL) EACH salt and pepper

Greek Vegetable Sauté:

In large nonstick skillet, heat 1 tbsp (15mL) vegetable oil over medium-high heat. Add 2 onions, cut into wedges, 2 sweet yellow peppers, seeded and thinly sliced and 1/4 tsp (1mL) EACH dried oregano leaves, salt and pepper.

Cook, stirring, until vegetables are softened and slightly golden, about 8 minutes.



Directions

Lightly combine ground beef, bread crumbs, feta cheese, onion, oregano, egg, salt and pepper; shape into meatballs.

Bake on parchment paper or foil-lined rimmed baking sheet in 375°F (190°C) oven for 15 minutes until digital instant-read thermometer inserted into several meatballs reads 160°F (71°C). Serve with Greek Vegetable Sauté.

DID YOU KNOW?

The word "cattle" comes from the Old French "chatel," as in chattel, meaning property. In many parts of the world, cattle remain an indicator of economic wealth.



#ItsShowTimePWF



FROLEK CATTLE CO. LTD.

**Proud Sponsors of the
84th Provincial Winter Fair
~EST 1906~**



PRAIRIECOAST
equipment

**0% FOR 84 MONTHS
SAVE NOW!
ON SELECT COMPACT
UTILITY TRACTORS**

**GOOG LUCK TO ALL PWF
EXHIBITORS!**

**BONUS SAVINGS WITH
0% FOR 60 MONTHS TERM**

#84thPWF



KAMLOOPS EXHIBITION ASSOCIATION 84th ANNUAL PROVINCIAL WINTER FAIR

Sponsored by:

The City of Kamloops, BC Association of Agricultural Fairs and Exhibitions,
the Kamloops Exhibition Association, British Columbia Lottery Corporation (BCLC), & Thompson-Nicola
Regional District

2022 PROVINCIAL WINTER FAIR COMMITTEE

| | |
|--|--|
| Chairperson | Jayme Hallstrom |
| Vice Chairperson | Dána Levere |
| KXA Board of Director Rep | David Arduini |
| 4-H/Open Beef Reps | Carole Gillis |
| 4-H Sheep Rep | Joanne Beltrametti |
| 4-H Photography Reps | Jody Rushka/Brenda Miller |
| 4-H Poultry Rep | David Comrie |
| 4-H Senior Member Rep | Portia Comrie |
| Open Sheep Rep | Dána Levere |
| Mountain Trail Clinic Rep | Colleen Meyer |
| Carcass Rep | Doug Haughton |
| Pioneer Event Rep | Tricia Schwarz |
| Banquet Rep | Carmen Loschiavo & Tara Lodzinski |
| Administration, Public Relations & Advertising, | Cara Haughton |
| Barn & Grounds | Monty Kinvig, Jim Clark, Doug Haughton, Scott Kellington |
| Commercial & Food Vendors, Kid Zone Rep | Cara Haughton |
| Sponsorships & Donations | Ada Mogge |
| Sale Hospitality & Promotion, RBC Buyer's Luncheon | Dána Levere |
| Commercial Displays | Doug Haughton |

Other Memebers: Jamie Levere, Emira Dempsey, Gary Gray, Vickie & Jason
Brandon, Michelle Tondevold, Pamela Krause, Sheryl Wurtz,

THANK YOU

Thank you to the BC Lottery Corporation for
your Community Gaming Grants Supporting
Youth Programs and Events!



"It's Show Time"

www.provincialwinterfair.com



JUDGES AND OFFICIALS

Beef Weight, Female & Group Classes
 Beef Showmanship & Round Robin
 Beef Team Grooming & Fitting
 Lamb Weight, Showmanship & Group Classes
 Lamb Females & Showmanship
 4-H Lamb Trimming & Fitting
 Youth Open Lamb Showmanship
 4-H Mountain Trail Clinician
 4-H & Youth Open Poultry Judge
 4-H Educational Display Judge
 4-H Photography Judge
 Auctioneer
 Ringman
 Official Photographer

Bob Miller, Kamloops BC
 Bob Miller, Kamloops BC
 Bob Miller, Kamloops BC
 Lori Haywood-Farmer, 150 Mile House BC
 Lori Haywood-Farmer, 150 Mile House BC
 Lori Haywood-Farmer, 150 Mile House BC
 Lori Haywood-Farmer, 150 Mile House BC
 Colleen Meyer, Kamloops BC
 Julie Chadiwick, Chilliwack BC
 Dimps Horn, 70 Mile House BC
 Julia Baker, Kamloops BC
 Russell Allison, Stettler AB
 Brandon Koch, Kamloops BC
 Alysha Milward, Kamloops BC

GREETINGS FROM OTTAWA



As Member of Parliament for Kamloops-Thompson-Cariboo, I'm proud to welcome you to the Kamloops Provincial Winter Fair!

The Provincial Winter Fair is a fantastic opportunity for our community to come together to celebrate local agriculture and for young people to participate in agricultural traditions.

Now in it's 84th year, the Fair has done a remarkable job keeping these traditions alive and created a wonderful space for all residents to show their support for our farmers and agricultural producers.

Thank you to all the organizers and volunteers who make this event happen, and best of luck to all the competitors!

Sincerely,
MP Frank Caputo
 Kamloops-Thompson-Cariboo



~ CHECK OUT THE SILENT AUCTION! ~

Visit the Silent Auction Area and Check Out some Fabulous Donated Items—Various Hand Made Crafts, Baskets and Services Galore!

The Silent Auction & Raffle Draw proceeds support the Provincial Winter Fair to benefit the youth of our community!

Thank You to our Silent Auction & Raffle Donors
Look for Our PWF Scholarship Online Christmas Auction in November!

Please contact us if you wish to donate an item/experience for the Online Auction!



You Grow. We Help.

**Proud Sponsors of the
 Group of 5 Beef Class & the
 RBC Buyer's Luncheon on
 Sale Day!**

We know that every decision you make has implications. From crop rotation to seed selection to selling into increasingly connected world markets, farming today means carefully measuring every input – including advice. Which is where we can help. With agriculture banking specialists who understand the risks, the challenges and the *rewards* of working the land.



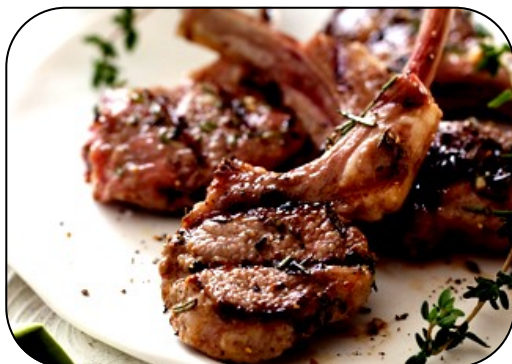
For more information or to contact an agriculture banking specialist visit rbc.com/agriadvice



GREETINGS FROM THE FAIR KITCHEN...

Some Recipe Ideas for Your Next Feast at Home

GIADA'S GRILLED LAMB CHOPS



Ingredients

- 2 cloves garlic, crushed
- 1 Tbsp fresh rosemary leaves
- 1 tsp fresh thyme leaves
- 1 pinch cayenne pepper
- Coarse sea salt
- 2 Tbsp extra-virgin olive oil
- 6 lamb chops, about 3/4-inch thick

Directions

1. In a food processor fitted with a metal blade add the garlic, rosemary, thyme, cayenne, and salt. Pulse until combined. Pour in olive oil and pulse into a paste. Rub the paste on both sides of the lamb chops and let them marinate for at least 1 hour in the refrigerator. Remove from refrigerator and allow the chops to come to room temperature; it will take about 20 minutes.

2. Heat a grill pan over high heat until almost smoking, add the chops and sear for about 2 minutes. Flip the chops over and cook for another 3 minutes for medium-rare and 3 1/2 minutes for medium.

Read more at <http://www.foodnetwork.ca>

DID YOU KNOW?

China has the largest number of sheep in the world



84th ANNUAL PROVINCIAL WINTER FAIR

LIST OF LIVESTOCK & CREATIVE ARTS

CONTRIBUTORS

4-H PHOTOGRAPHY DIVISION

LOWER NORTH THOMPSON 4-H PHOTOGRAPHY CLUB

- | | | | |
|---|-----------------|----|-----------------|
| 1 | KLEISSEN, Sylar | 20 | KLEISSEN, Sylar |
|---|-----------------|----|-----------------|

YALE COUNTY 4-H PHOTOGRAPHY CLUB

- | | | | |
|----|-----------------|----|-----------------|
| 2 | ANDERSEN, Zoe | 30 | RUSHKA, Janessa |
| 21 | ANDERSEN, Zoe | 5 | SMIT, Adam |
| 3 | RUSHKA, Janessa | 31 | SMIT, Adam |

4-H CLOVERBUD DIVISION

- | | | | |
|----|-----------------|----|--------------|
| 75 | HENNELLY, Kaija | 77 | OGILVIE, Ava |
| 76 | HENNELLY, Mika | | |

4-H POULTRY DIVISION

ASHCROFT 4-H POULTRY CLUB

- | | | | |
|-----|------------------|-----|---------------|
| 120 | MAYDEN, Paxton | 150 | KRAUSE, Jacob |
| 121 | SCHALLES, Presli | | |

LOWER NORTH THOMPSON 4-H POULTRY

- | | |
|-----|-------------|
| 140 | LOGAN, Sara |
|-----|-------------|

YALE COUNTY 4-H POULTRY CLUB

- | | | | |
|-----|---------------|-----|----------------|
| 122 | MOORE, Hunter | 141 | MOORE, Grayson |
|-----|---------------|-----|----------------|





What is a Photography 4-H Project?

Photography members learn how to select, care for, and use a camera and to select film. They learn to take attractive, interesting photographs that show good composition, sharp detail and good use of light. 4-H photography offers four units and an area of advanced skills. Members may also choose to learn how to develop their own black and white photos and prepare slide shows.

Photography is a way for you to show what you have seen and how it was seen by you. It is a way to document the places that you have been and what you have experienced.

4-H Photography teaches you how to express yourself through photographs. It also teaches you how to take a photo that is appealing to the public. The Provincial Winter Fair is a great place for us to learn what is appealing to the public and gain valuable information from it.

Through photography, members gain skills that they can use throughout life in many different arts, such as complementary colors and where the strong part of an image is. It also teaches them to take constructive criticism and learn from it.

4-H Photography is a great opportunity for kids that don't live on a farm to join 4-H so urban members can experience agriculture.



Learn To Do By Doing

PROVINCIAL WINTER FAIR – AIMS & OBJECTIVES

The Kamloops Provincial Winter Fair (PWF) provides an opportunity to all our contributors who participate at our Fair to learn more about agriculture. The agriculture education of the public and our surrounding community is equally important to us.

PWF continually strives to encourage public agricultural awareness by providing quality market livestock for show and sale. This live auction promotes the sale of grain-fed livestock. Promoting the livestock sale as well as learning about the amount of time, feed and effort it takes to produce these animals is of the utmost importance. All of this is provided at PWF in an atmosphere which is educational, yet fun.

Each year, the PWF Committee's goal is to provide the public with new agricultural information through various displays. PWF does just that. Our main objective is to make the public aware of just how important agriculture is to our Community and our Country. Providing the public with tools to education themselves is what Provincial Winter Fair does best.



PROVINCIAL WINTER FAIR - PRIZE MONEY 2022

4-H BEEF & SHEEP DIVISIONS

MARKET WEIGHT CLASSES & FEMALES

1st - \$40.00; 2nd - \$35.00; 3rd - \$30.00; 4th - \$25.00; 5th - \$20.00; 6th - \$15.00; 7th - \$5.00;

4-H SHEEP & BEEF SHOWMANSHIP

1st - \$40.00; 2nd - \$35.00; 3rd - \$30.00; 4th - \$25.00; 5th - \$20.00; 6th - \$15.00; 7th - \$5.00;

4-H DIVISIONS: POULTRY & PHOTOGRAPHY AND YOUTH OPEN POULTRY

1st - \$25.00; 2nd - \$20.00; 3rd - \$15.00; 4th - \$10.00; 5th - 7th - \$5.00;

4-H MEMBER JUDGING

ALL DIVISIONS—Senior/ Intermediate/ Junior

1st - \$40.00; 2nd - \$35.00; 3rd - \$30.00; 4th - \$25.00; 5th - \$20.00;

BEEF & SHEEP DIVISION: OPEN SINGLE MARKET WEIGHT & FEMALE CLASSES

1st - \$40.00; 2nd - \$35.00; 3rd - \$30.00; 4th - \$25.00; 5th - \$20.00;

YOUTH OPEN SHEEP WEIGHT & SHOWMANSHIP CLASSES

1st - \$40.00; 2nd - \$35.00; 3rd - \$30.00; 4th - \$25.00; 5th - \$20.00;

"PWF CARCASS CLASS EVENT"—4-H/OPEN BEEF & LAMB

BEEF & LAMB CARCASS CLASS PRIZE MONEY

Prize money is kindly donated by 'Doug Haughton (Southlands Ranch, Knutsford BC)

4-H BEEF/CARCASS CLASS

1st - \$125.00; 2nd - \$100.00; 3rd - \$75.00;

4-H LAMB + OPEN BEEF/LAMB CARCASS CLASS

1st - \$100.00; 2nd - \$75.00; 3rd - \$50.00; 4th - \$25.00

(Please Note: Prize Money is based on Sponsorships and may be adjusted if donations do not cover all the classes).





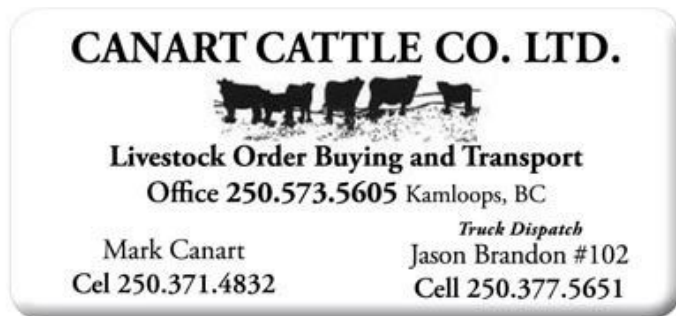
BUYER'S GUIDE: LAMB CUTS continued...

Lamb Ribs

One of the most cost-conscious cuts of lamb. Some butchers actually sell the front seven ribs in a slab with the loin muscle removed.

Lamb Leg

Cone shaped, lamb hind legs are a twisted mass of muscles, sinew, and fat, but the whole leg can be roasted, with or without smoke. The bone-in-leg is perfect for any holiday celebration or special occasion.



REMEMBER TO SUPPORT OUR FOOD TRUCK VENDORS!
VALHALLA SMOKEHOUSE & ARMA GREEK CATERING



YOUTH OPEN POULTRY DIVISION

| | | | |
|-----|----------------|-----|------------------|
| 190 | CAPUTO, Piper | 193 | HICKEY, Evelyn |
| 191 | DOLSON, Micah | 194 | MAYDEN, Matthias |
| 192 | HENNELLY, Mika | 195 | WOODMAN, Buck |



What is a Poultry 4-H Project?

In the Poultry project, members may raise chickens for egg and meat production; or they may raise ducks, geese or turkeys for meat or as breeding stock. Members may also take such projects as game bird raising or developing a waterfowl refuge. The purpose of this project is to give members an opportunity to learn basic principles of poultry raising, breeding, health, and management!

4-H OFFERS ALL TYPES OF PROJECTS!



☒ Animal Projects

Choose From: Beef, Cavy, Dairy, Dairy Goat, Dog, Honeybee, Horses, Llama, Poultry, Rabbit, Sheep, & Swine

☒ Creative Arts Projects

Choose From: Clothing (Sewing), Crafts, Foods (Cooking/Preservation etc.), Leathercraft, Outdoor Living, Photography & Woolcraft

☒ Mechanical Projects:

Choose From: Bicycle, Small Engines, & Tractor

☒ Personal Development:

Choose From: Adopt a Grandparent, Agriculture Awareness, Aquaculture, Environment, Junior Leader, Marketing, & Self-Determined

☒ Plant & Soil

Choose From: Agroforestry, Field Crops & Gardening "Big & Small"



For More Project & Club Information, Visit www.4hbc.ca



What is a Goat 4-H Project?

Members care for one or more dairy goat does. Dairy goats need good pasture but often can utilize pasture that might otherwise be wasted. Members should take a Female Kid project or a Butcher Kid project when they first begin in the club. More experienced members may wish to develop a Dairy Goat Herd or study pasture conditions in their area and how production can be increased through management practices.

Thank you for voting us
**Your #1 Home Décor Store
& One of the Best Furniture
Stores in Kamloops.**



Every piece we design is handcrafted and completely unique in its own way. We use only the highest quality, locally sourced, hand selected material.




Stop by our showroom
Wednesday – Saturday 10-5
1619B Valleyview Drive, Kamloops
f lmbdesigns.shop i

THIS WEEK
READER'S
CHOICE
Presented by
kamloops
WINNER
2022

THIS WEEK
READER'S
CHOICE
Presented by
kamloops
ONE OF THE BEST
2022

Wine Barrel:
Sales
Restorations
Furniture
Home Décor



Beef Short Loin

The short loin is only about 16 to 18 inches long, so it will yield anywhere from 11 to 14 steaks, depending on thickness. Cuts of steak that come from this region of the cow include porterhouse, strip steak and T-bone.

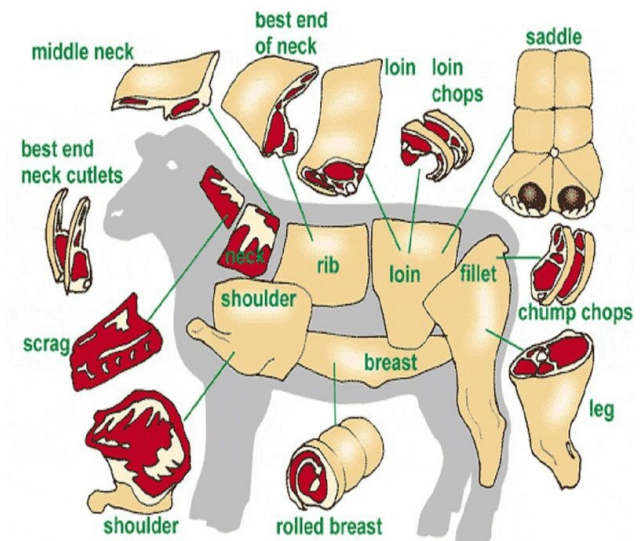
Beef Sirloin & Tenderloin

Both the tenderloin filet and top sirloin are highly-prized cuts of steak. Each cut offers its own benefits, however, so consider the steak's strengths when browsing the butcher case. The sirloin is separated into top sirloin and bottom sirloin. Top sirloin gives us steaks that are good for grilling, while the bottom sirloin gives us roasts.

Beef Round

The beef round primal cut basically consists of the back leg of the steer. Muscles from the round are fairly lean, but also tough, since the leg and rump get a lot of exercise.

BUYER'S PROCESSING GUIDE: LAMB CUTS



Lamb Cuts Explained - Practical and detailed information. Traditional lamb chops come from the rib, loin, sirloin and shoulder of the animal.

Shoulder Chop

This part of the animal works hard, so the meat from a lamb's shoulder is full of flavour. Shoulder chops require a shorter amount of cooking time than other cuts. Recipes using lamb shoulder are fail-safe crowd pleasers.

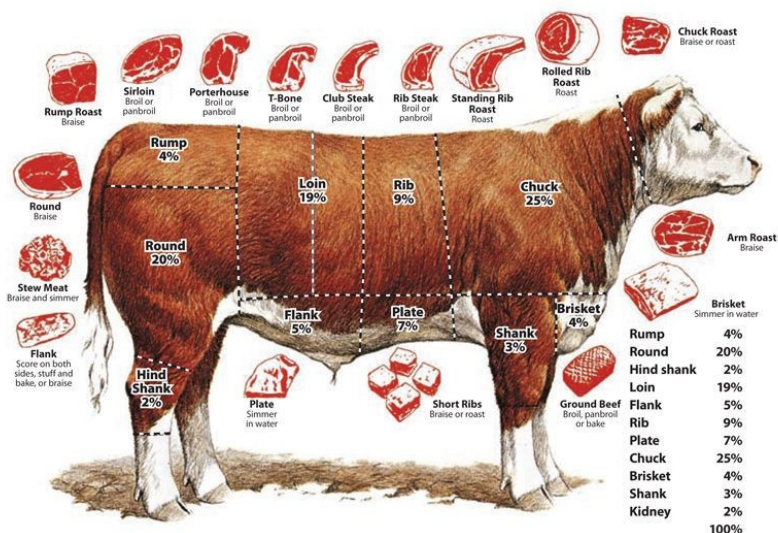
Loin Chop

One of the most readily available cuts in the case at the grocery store and butcher shop. These are mini T-bone steaks cut from the waist of the lamb. Lamb loin chops contain almost one muscle.

Rack

Surprisingly easy to prepare at home, the rack offers versatility for entertaining. The rack of lamb is an icon of fine dining menus. A rack of lamb always makes an elegant dinner. It is expensive and a somewhat small cut, though, so it is best served as part of a menu that includes several other dishes, like a soup or fish course, potatoes and string beans, and a salad.

BUYER'S PROCESSING GUIDE: BEEF CUTS



Graphic used from the AHA website: <http://www.hereford.org/node/781>

Beef is never not delicious but certain cuts of beef are even more delicious than other parts of meat. Beef terminology is confusing. You often have your work cut out for you trying to figure out what cut you actually just bought.

Beef is divided into large sections called primal cuts. These beef primal cuts, or - primals, are then broken down further into subprimals, or - foodservice cuts, and then into individual steaks and other retail cuts.

Beef Chuck

Chuck steak is a cut of beef and is part of the sub primal cut known as the chuck. Chuck steak is a versatile meat, and not just because it's known by several names.

Beef Rib

The beef rib primal cut is where we get some of the most tender, flavorful and desirable cuts of beef. Made from the top part of the center section of rib, specifically the 6th through the 12th ribs, the beef rib primal cut is used for the traditional standing rib roast.

Beef Plate

Also called the short plate it is typically a cheap, tough and fatty meat. The short plate produces types of steak such as the skirt steak and hanger steak, as well as short ribs.

Beef Brisket

While the borders of this cut can vary depending on who you ask or what part of the world you're in, brisket generally includes some of the outer and inner pectoral muscles. The brisket is basically the chest or pectoral muscle of the animal.

Beef Shank

The shank comes from the upper leg portion of the cow. Since this is a very well exercised part of the body, the meat is lower in fat and tends to be sinewy and dry.

ROUND ROBIN 4-H

SHOWMANSHIP COMPETITION

| | | | |
|------|-------------------------------------|------|--------------------------------|
| 1200 | KLEISSEN, Sylar (Lower North Thomp) | 1202 | TONDEVOLD, Caden (Yale County) |
| 1201 | RUSHKA, Jaykub (Yale County) | 1203 | WILSON, Alley (Pritchard) |

This class is designed to allow competitors to demonstrate their ability to show different project animals – namely **BEEF, SHEEP, HORSES, DOGS, POULTRY, & RABBITS** or **CAVIES**, SUBJECT TO PROJECT AVAILABILITY AT THE FAIR.

Each section will be held in conjunction with the showmanship classes of each division, and will be judged by the respective showmanship judge, according to the standards of each division.
***2022 will have Poultry, Horse, Beef & Sheep.**

It's a fun event for 4-H Members to experience other 4-H projects, and sometimes provides some humour at the same time!

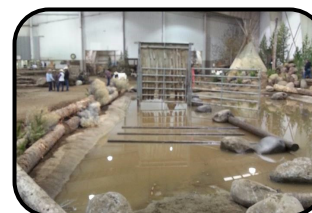
What is Mountain Trail?

Mountain Trail is a relatively new horse sport that started a competitive circuit in 2016 in British Columbia

It is a sport for all ages and levels of horses and riders. The Mountain Trail obstacles are completed at a walk either by riding through them or ground driving your horse over obstacles. Points for obstacles are based on good horsemanship and for technical ability. The horse's well being, attitude, willingness, curiosity are all important. There are categories for children, adults and seniors...experienced and inexperience. There are also categories for horses of all experience levels as well.

Some examples of things that you may be asked to do in a mountain trail competition are:

- ◆ Water obstacles, Bridges, Teeter Totter, Gates
- ◆ Mazes, Ground Tying, Dragging objects, Balance beams, Tunnels





BC Agriculture Facts: Beverage Food Processing

BC's FOOD & BEVERAGE MANUFACTURING KEY FACTS (2016)

- Sales: \$9.8 billion
- GDP: \$2.8 billion
- Share of Provincial Total GDP: 1.3%
- Exports: \$3.8 billion

-Combined sales from B.C. breweries, wineries, and distilleries amounted to \$1.3 billion in 2016.

- Food and beverage manufacturing made up 62 per cent of B.C.'s agri-food and seafood GDP in 2016, with contributions of \$2.8 billion.

- In 2016 B.C. ranked fourth among provinces in Canada in food and beverage manufacturing sales.

-Top Five Beverage Exports: \$35 million in water; \$22 million in fruit & vegetable juice;

\$10 million in wine; \$7 million in beer and cider; and \$3 million in other non-alcoholic beverages.



Visit Kamloops' Four Wineries—Harper's Trail, Monte Creek Ranch, Privato & Sagewood!

Number of BC wineries: 272 licensed grape wine wineries in British Columbia (341 total licensed wineries).

Number of Vineyards: 929 vineyards with more than 10,260 acres of planted land (wineries and independent growers)

Harvest & Estimated Production (2015): BC Harvested 32,848 Short Tonnes of Grapes & Produced 21,351,200 L of Wine

Value of the 2012 Grape Crop (Estimated) \$59,375,333.38 Cdn

ALSO TAKE A BREW TOUR & CHECK OUT KAMLOOPS' EMERGING CRAFT BEER & CIDER SCENE!



CRAFT BEER DID YOU KNOW?

Craft beer is brewed using traditional techniques without any preservatives and at least 50% malt content.

Small-scale breweries in B.C. have increased sales by 51.75% from 2014 to 2015.

Of the 102 craft breweries in B.C., 60 of them have opened in the past five years.



CHECK OUT THE BRAND NEW "YEW STREET FOOD HALL"

The Yew Street Food Hall on the North Shore in Kamloops has officially opened its doors.

It is being described as a "collaborative" food venue that is bringing together smaller, family-owned restaurants together in one location, at 107 Yew Street.



RAIL GRADE PROCEDURE

Rail grading is offered by the Provincial Winter Fair for the convenience of those people who wish to support the 4-H sale, but do not want to keep the meat from the animal.

Rail Grade sheep animals are paid for by the slaughterhouse on a dressed weight basis, after the animal is slaughtered. The government graders grade the carcass and the carcass is priced accordingly to the grade or in relation to the posted price.

Please contact the PWF Office to Rail Grade beef animals – we can either arrange for a local slaughterhouse to purchase the beef, or the animal can be re-sold at market value, and the buyer would receive the amount (price based on its per pound live weight).

At the 4-H Sale, the procedure is as follows:

- The customer buys the steer or lamb themselves, or the PWF will arrange to have a buyer purchase the animal on your behalf.
- The customer notifies the bidders at the sale ring that they wish to rail grade the animal and this is noted on the shipping documents. The customer must sign the shipping instructions verifying their intentions to have the animal rail graded. At this time, the customer must also pay for the animal, in full, to PWF.
- The PWF arranges the shipping of the animal to the appropriate slaughterhouse or auction market. Lambs are purchased by Dan Sands and are picked up on Monday Night of the sale.
- The animals are delivered to the slaughterhouse along with the shipping documents from PWF. The slaughterhouse identifies the animal from the ear tag prior to slaughter. After slaughter, the carcass is weighed and graded by a government grader. The price paid by the plant is set depending on the grade and weight of the carcass and is paid on the dressed weight, not on the live weight of the animal.
- The slaughterhouse pays the funds to the PWF, after deducting a pro-rated shipping fee (when applicable) for the transportation of the animal from Kamloops to the slaughterhouse. PWF will then issue the cheques to the buyers. These cheques are generally processed within 3-4 weeks following the sale.

Depending on the amount paid for the animal on a live basis, the amount received from the slaughterhouse may or may not cover the expense of purchasing the live animal. PWF does not have control over the price paid by the slaughterhouse, nor the grade of the animal at the plant, and does not have responsibility to the customer beyond arranging for the appropriate slaughterhouse to purchase the animal and arranging for the most economical transportation from the fair grounds to the slaughterhouse.

Benny The Butcher: Custom Cutting & Curing
Your Local Butcher Shop Just Outside Kamloops BC
(250) 819-0337
kamloopsfreshjerky@gmail.com





SETTLEMENT OF PURCHASES

NOTE: In the following clauses, “purchaser” or “buyer” means the person who bids for the animal at auction, unless he or she, while acting as agent, so signifies when signing the sales slip.

All purchases must be settled before animals leave the PWF Fair grounds. If any purchaser fails to settle for their purchase, the Committee reserves full power to resell the animal to their best advantage, either publicly or privately. Any loss arising from such resale, together with keep and other expenses, will be collected from the defaulter.

Immediately after each purchase is declared, the risk of the animal lies exclusively with the purchaser and it is declared that until settlement shall be made in the terms of these conditions, the delivery of the animal shall be suspended.

The secretary of the Provincial Winter Fair shall have the power to give receipt in full for all payment of stock and will remit the amount realized, less the proper charges, for each animal, to the seller thereof within 30 days after the date of sale.

No animals may be removed from the premises without an authorized release slip from the office. This release must be presented to the shipping committee. The committee, acting only as a medium between buyer and seller, will not be responsible for any loss of stock following the sale occurring from any cause whatsoever.**

**Intermediary Holding: In order to reduce stress on the market animals – livestock may be held at an intermediary holding area (ranch) until the slaughter house can handle the number of animals – therefore the livestock are under the liability of Provincial Winter Fair until they go to slaughter if they are held at a holding location– once they are delivered to the slaughterhouse – the buyers then become liable

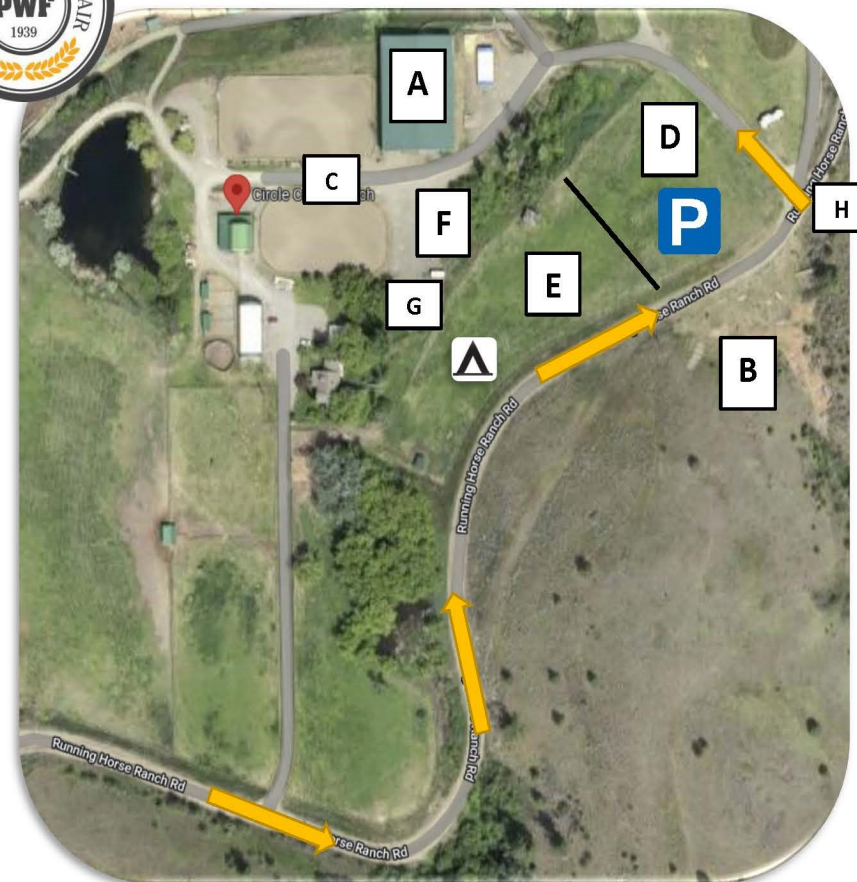
Bids will not be accepted from buyers owing a debt to the Provincial Winter Fair.

PROVINCIAL WINTER FAIR COMMITTEE AND THE KXA WILL NOT BE RESPONSIBLE FOR ANY PRIVATE TRANSACTIONS THAT ARE NOT PROCESSED THROUGH THE PWF or KXA OFFICE.

**THANK YOU FOR SUPPORTING
LOCAL PRODUCERS**



MAP OF GROUNDS



A – Covered Arena: Main Ring; Beef, Sheep, Photography, Poultry; Carcass Cooler Display & Sale Ring (Monday Only)

B – Mountain Trail Course: Equestrian Mountain Trail Clinic

C – Main Street: Kid Zone Lawn Games & Food Vendor

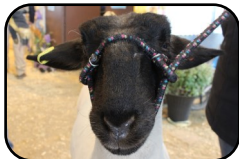
D – Visitor Parking & Commercial Displays

E – Overnight Participant Parking

F – PWF & Sale Office: Fair Information, Lost & Found, & First Aid

G – Banquet Tent: PWF Banquet (Sunday)

H – Public Fair Entrance

**4-H LAMB DIVISION**

500+ - 4-H Market Lamb
 600+ - 4-H Ewe Lamb (Born 2022)
 700+ - 4-H Yearling Ewe (Born 2021)
 800+ - 4-H Ewe w/ Lamb at Foot
 900+ - 4-H Carcass Lamb

ASHCROFT 4-H LAMB CLUB

| | | | |
|-----|-----------------|------|-------------------------|
| 500 | KRAUSE, Jacob | 607 | SCHALLES, Presli |
| 501 | MAYDEN, Paxton | 800 | SCHALLES, Presli |
| 502 | SCHALLES, Carly | 800A | SCHALLES, Presli (Lamb) |

LOWER NORTH THOMPSON 4-H LAMB CLUB

| | | | |
|--------|-----------------------------|--------|--------------------------|
| 503 | ARMSTRONG, Brooklynn | 511 | SMITH, Quinn |
| 504 | CAPUTO, Mikara | 512 | TIEL, Isabelle |
| 505 | FILEK, Elizabeth | 600 | CAPUTO, Mikara |
| 506 | HALLSTROM, Kennady | 601 | DOLSON, Peyton |
| 507 | HICKEY, Blaire | 602 | HALLSTROM, Kennady |
| 508 | LEE, Maeve | 603 | HENNELLY, Tosca |
| 509 | LOGAN, Sara | 700 | COMRIE, Portia |
| 510 | MCKAY, Anna | 701 | TIEL, Isabelle |
| 10001A | COMRIE, Portia (Trim & Fit) | 10001B | LOGAN, Sara (Trim & Fit) |

PRITCHARD 4-H LAMB CLUB

| | | | |
|--------|----------------------------|--------|----------------------------|
| 513 | BULT, Brooklynn | 518 | WILSON, Alley |
| 514 | BULT, Sidney | 519 | WILSON, Paige |
| 515 | KENDALL, Maela | | |
| 10002A | WILSON, Alley (Trim & Fit) | 10002B | WILSON, Paige (Trim & Fit) |

DID YOU KNOW?

- One year's growth of fleece is about 8 pounds of wool
- Sheep have an excellent sense of smell. They even have scent glands in front of their eyes and on their feet!
- Sheep are emotionally complex animals. Sheep are capable of experiencing a wide range of emotions, just as humans do. Many studies have highlighted the ability for sheep to feel afraid, angry, bored, sad and happy.

AND DON'T MISS**THE KID ZONE LAWN GAMES
ON MAIN STREET**

CORN HOLE

RING TOSS

LADDER BALL

BOCCE BALLS

HORSE SHOES



**FUN YOUTH ACTIVITY BOOKS AND
 SCAVENGER HUNT BINGO ARE
 AVAILABLE AT THE FAIR OFFICE**





BUYERS FACT SHEET

When you buy a 4-H Steer or Lamb, you are buying the finest quality meat possible. The utmost care and attention has been given to these 4-H projects by the 4-H members themselves.

Anything backed by the 4-H name today can only be described "AS NEAR TO PERFECT" as you, the consumer, can get. The modern 4-H animals are grain fed and meet today's modern demands: the animals should be long, well muscled and trimmed to maximize meat yield with a minimum of waste. The average dressing percent of the animal is 55%. The percentage may vary with each animal. An example would be a steer of 1000 lbs. with a dressed percent of 55% would yield you 550 lbs. of meat hanging.



THE SALE

The sale of the Market Beef and Lamb, Poultry & Photography Projects are at 10:00 AM with the Parade of Champions at 9:30 AM. The [RBC Buyer's Luncheon](#) will be hosted during the sale at 11:30 AM at Ring Side.



GETTING THE MEAT TO YOUR FREEZER

Transportation of your live animal to the plant can be arranged at the PWF Sale Office, but at the cost of the Buyer. Various packing houses are available to handle your purchase and prepare it for your freezer. There will be a charge for slaughtering, cutting and wrapping. Price list information may be available at the PWF Sale Office & varies per vendor. Also, don't forget to indicate to the packing house whether you would like the kidney, heart, liver and oxtail. Remember to provide your cutting instructions to the slaughter house so your package can be processed ASAP.

SUPPORTING THE SALE EVEN IF YOU DON'T NEED A STEER OR LAMB

Packing plants will process your animals and give you the current carcass price determined by grade. You can arrange through the PWF Sale Office to have your purchase RAIL GRADED to a packing unit.

NEVER ATTENDED AN AUCTION?

Have you ever had reservations about sitting at an Auction? Your troubles are over. We have a wide assortment of people who will do the bidding for you. Just specify a maximum price and we will try to purchase a quality animal on your behalf and within your price range.

CAN'T EAT A WHOLE BEEF OR LAMB YOURSELF?

Ask a neighbor to go halves on an animal with you. Employers often give a turkey as a Christmas bonus to employees. Why not consider Beef or Lamb? Package up some steak, a roast, a few pounds of hamburger or lamb chops and give that instead. Some companies have a big barbecue or a "Meat Draw" – just to suggest a few. Grade "A" animals today are leaner than ever to appeal to fitness oriented people.

YALE COUNTY 4-H LAMB CLUB

| | | | |
|--------|------------------------------|--------|--------------------------------|
| 520 | ADAMSKI, Ty | 605 | RUSHKA, Jaykub |
| 521 | ADAMSKI, Peyton | 606 | TONDEVOLD, Morgan |
| 522 | CORNISH, Aiden | 702 | RUSHKA, Janessa |
| 523 | OGILVIE, Mia | 801 | RUSHKA, Jaykub |
| 524 | RUSHKA, Janessa | 801A | RUSHKA, Jaykub (Lamb) |
| 525 | RUSHKA, Jaykub | 801B | RUSHKA, Jaykub (Lamb) |
| 526 | SAMPIETRO, Jackson | 900 | CORNISH, Aiden |
| 527 | SAMPIETRO, Presley | 901 | TONDEVOLD, Caden |
| 528 | SANDY-GUSTAFSON, Mackenzie | 902 | RUSHKA, Janessa |
| 604 | CORNISH, Aiden | 903 | RUSHKA, Jaykub |
| 10000A | RUSHKA, Janessa (Trim & Fit) | 10000B | TONDEVOLD, Morgan (Trim & Fit) |

YOUTH OPEN MARKET LAMBS

| | | | |
|-----|-----------------|-----|------------------|
| 300 | CAPUTO, Piper | 305 | OGILVIE, Ava |
| 301 | DOLSON, Micah | 306 | PORTER, Cassidy |
| 302 | HENNELLY, Kaija | 307 | PORTER, Emerson |
| 303 | KRAUSE, Bailey | 308 | SCHALLES, Oliver |
| 304 | KRAUSE, Hazel | 309 | WOODMAN, Buck |

OPEN SINGLE MARKET LAMBS

| | | | |
|-----|-------------------|-----|-----------------------|
| 400 | COSTACHE, Sarah | 406 | MACLEAN, Lana |
| 401 | KRAUSE, Jacob | 407 | ORCHARD, Riverbend |
| 402 | LOSCHIAVO, Carmen | 408 | LEVERE LIVESTOCK |
| 403 | LOSCHIAVO, Carmen | 409 | ARDUINI, Beau |
| 404 | RUSHKA, Janessa | 410 | ARDUINI, Blair |
| 405 | RUSHKA, Jaykub | 411 | SANDY-GUSTAFSON, Kody |



**Provincial Winter Fair Thanks
Agri-Supply for donating FIVE Gift
Certificates for a 4-H Member Draw!**



DR. DAVID RUSHKA INC.
GENERAL DENTISTRY
250-374-3353
418 ST. PAUL STREET, KAMLOOPS BC,
V2C 2J6



Farm Credit Canada
 Advancing the business of agriculture

300-1674 Bertram St.
 Kelowna BC, V1Y 9G4
 Phone: 250.470.5050
 Fax: 250.470-5061
 Email:
 bckelowna@fcc-fac.ca

Here's to
**CANADIAN
 AGRICULTURE**



The Calf Scramble (the current Pioneer Event, *named in honour of a different regional agricultural pioneer each year*) had its origin in 1959 with the first one being held in an old airplane hangar across from the BC Beef Cattle Growers Yards. Those who caught a calf kept it for their project the following year with the calves being donated by area ranchers.

The event has evolved from chasing livestock around an arena into a practical obstacle course of ranching activities.

The Christmas Fat Stock Show & Sale changed its name in 1961, when it became the Provincial Winter Fair. The fair then moved locations in 1970 to the previous KXA Agriplex on Mount Paul Center.

NOW: Today, the fair occurs on a smaller scale, but with the same heart, enthusiastic and dedicated volunteers of the past. The fair is still a tradition for multi-generational families, however there are numerous newcomers. The livestock show is still the heart of the fair, but in the past we have expanded to include various other groups including craft and food vendors, as well the first annual Top Hand Ranch Competition in 2008. In 2016, we moved to the gorgeous grounds at Circle Creek Ranch in Kamloops. We are proud to offer highly entertaining family events and activities, in addition to showcasing local talent on the Main Stage.

In honour of our 80th Anniversary last year—we showcased our region's local fare with a delectable wine pairing event—**Grapes & Grill & a Pioneer Tea**. The popular Grapes & Grill returns this year for its 2nd Annual Event on Saturday of the Fair.

We hope everyone can come out and experience history taking place by either exhibiting in the fair or just coming down to the fairgrounds! We appreciate the great support we get from our fair sponsors, livestock buyers and 4-H clubs throughout the Cariboo and the Thompson-Okanagan Valleys!!

Welcome to the 2022 Provincial Winter Fair!

See you next year for our 85th Anniversary in 2023!



2022: THE KAMLOOPS PROVINCIAL WINTER FAIR CELEBRATES

THEN: The year was 1939 and WWII had just begun when word was received that the Army had taken the Pacific National Exhibition grounds in Vancouver over to serve as a base, thus forcing the cancellation of the British Columbia Winter Fair that had been held there annually for some years. This was a major concern to those who were preparing their cattle, sheep and swine for the show.

While stockmen were left wondering what to do, a group of people saw this as an opportunity to establish Kamloops as the livestock center of the province and steps were immediately taken to create a new show and sale in Kamloops. With the help of the BC Beef Cattle Growers Association (the forerunner of the BC Cattlemen's Association), the BC Sheep Breeders, the Interior Swine Producers, the Dept. of Agriculture, the Chamber of Commerce and the City of Kamloops, the idea started to take shape. Matt Hassen, well known Auctioneer, started out in search of the \$1200 needed for prize money. He went to the Vancouver Exhibition Association and asked for \$100 of the Federal money that had been allotted to the now cancelled BC Winter Fair and was, of course, refused. (This refusal likely had a long lasting helpful effect on the Kamloops endeavor because when the Vancouver Exhibition Association wrote the next year to the Interior asking to have the participants return, most remained loyal to the newly formed venture). Hassen approached the Provincial Government and received \$500. Business people in Vancouver and Kamloops were canvassed but the \$1200 goal was not reached.

The BC Beef Cattle Growers had previously planned renovations to the Bull Sale arena with grant money from the Federal Government and with this money the sales ring was improved, seating enlarged and a furnace installed, as this was taking place in December and the weather could be very cold.

The first "Annual Provincial Christmas Fat Stock Show and Sale" came into being on December 4, 1939 located at the Kamloops Stockyards. The Boys and Girls section, (which evolved by the late seventies into one of the major 4-H competitions in Canada), started with only a modest number of calves in that section. In fact there were fourteen calves in the Boys and Girls Section and Elmore McMorran of Harper Ranch was the winner. The Open cattle competition dominated the show and sale with 314 being sold of which 290 had been entered in the carload of 15 or group of 5 classes, while 24 were entered in the individual halter classes. The Swine show had an exhibition of 100 brood sows and 5 Yorkshire Boars with 176 market hogs being sold. An undisclosed number of sheep were sold with final figures indicating a total of 797 head of cattle, sheep and swine being marketed for a grand total of \$37,732.

As We Celebrate the Ranching & PWF Pioneers of our Region!



4-H LAMB CARCASS

| | | | |
|-----|------------------|-----|-----------------|
| 900 | CORNISH, Aiden | 902 | Rushka, Janessa |
| 901 | TONDEVOLD, Caden | 903 | Rushka, Jaykub |

OPEN LAMB CARCASS

| | | | |
|-----|-----------------------|-----|------------------|
| 450 | BRANDON, Vickie | 453 | MERCER, Maddison |
| 451 | CHARLEYBOY, Elizabeth | 454 | WEDLER, Susan |
| 452 | MERCER, Brooklyn | 455 | WEDLER, Susan |

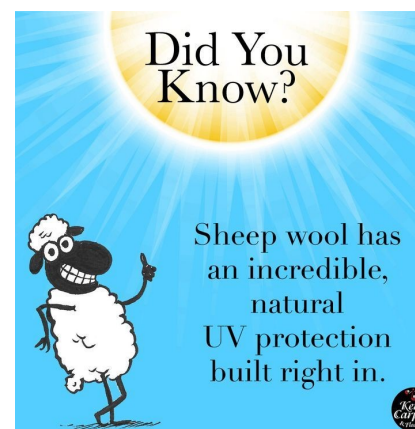
OPEN EWE LAMBS

| | | | |
|-----|-------------------|-----|------------------|
| 200 | BARTLEY, Launa | 204 | KRAUSE, Bailey |
| 201 | BRANDON, Chance | 205 | KRAUSE, Hazel |
| 202 | FRENCH, Katelyn | 207 | LEVERE LIVESTOCK |
| 203 | HALLSTROM, Kendra | | |

OPEN YEARLING EWE LAMBS

| | | | |
|-----|------------------|-----|------------------|
| 250 | LEVERE LIVESTOCK | 251 | LEVERE LIVESTOCK |
|-----|------------------|-----|------------------|

DID YOU KNOW?





4-H BEEF DIVISION

1000+—Open Beef Market Steer
 1050+—Open Beef Carcass Steer
 2000+— 4-H Market Steer
 3000+ - 4-H Heifer

4000+ - 2year Old Cow-Calf Pair
 4050+ - 3year Old Cow-Calf Pair
 5000+ - 4-H Carcass Steer
 6000 + - 4-H Young Beef Calf

ASHCROFT 4-H BEEF CLUB

5000 HOGGARD, Waylon

CLINTON 4-H BEEF CLUB

5005 WEDLER, Colton

5006 WEDLER, Emma



GRASSLANDS HOMESTEADERS 4-H BEEF CLUB

3000 MARTINDALE, Mya

5001 MARTINDALE, Mya

Team 2 MARTINDALE, Mya (Team Grooming)

LOWER NORTH THOMPSON 4-H BEEF CLUB

2000 BUCHER, Natalie

3001 COMRIE, Portia

2001 CAPUTO, Elliot

4000 CAPUTO, Elliot

2002 COMRIE, Portia

4000A CAPUTO, Elliot

2003 COMRIE, Tavish

5002 COMRIE, Tavish

2004 HALLSTROM, Jacey

5003 KLEISSEN, Sylar

2005 KLEISSEN, Sylar

Team 1 BUCHER, Natalie (Team Grooming)

Team 2 COMRIE, Portia (Team Grooming)

Team 1 CAPUTO, Elliot (Team Grooming)

PRITCHARD 4-H BEEF CLUB

2006 SCHMITKE, Alexis

4050 WURTZ, Greta

2007 WURTZ, Greta

4050A WURTZ, Greta

4001 WURTZ, Charli

5004 WURTZ, Greta

4001A WURTZ, Charli

6000 WURTZ, Charli

Team 3 SCHMITKE, Alexis (Team Grooming)

Team 3 WURTZ, Charli (Team Grooming)

DID YOU KNOW?

You may know that cows have 4 stomachs, which is pretty cool, but they are actually colour blind too with red & green!

SUNDAY, SEPTEMBER 25, 2022 - continued...

3:00 PM Beef/Sheep Female, Poultry and Photography Projects
 May Leave Barn with Barn Release

4:00 PM Banquet Set-Up – **Onsite: Banquet Tent**

6:00 PM Banquet Doors Open

6:30 PM PWF Dinner & Awards Banquet – **Onsite: Banquet Tent**

4-H Pledge, 4-H Grace, & Oh Canada!

Buffet Dinner Catered by La Lucina

Award Presentations ~ 8pm

Dance to Follow – DJ – Encore Sound

Sponsored by Grandview Acres, Campbell & Co Chartered
 Professional Accountants, and Blackwell Dairy Farm

MONDAY, SEPTEMBER 26, 2022~ SALE DAY!

9:00 AM Kids Lawn Games (ALL DAY) - **Kids Zone (Main Street)**

9:30 AM Parade of Fair Champions - **Covered Arena - Main Ring**

10:00 AM LIVE AUCTION OF MARKET & SALE PROJECTS—Live Streamed
 Auction of Beef, Lamb, and Photography Projects
 —Covered Arena Main Ring

11:30 AM **RBC Royal Bank of Canada Buyer's Luncheon—Main Street**



Royal Bank

Club Move Out begins at end of Sale

A SPECIAL THANK YOU TO LEVERE LIVESTOCK

Leverre Livestock Ewe Lamb



The Leverre Livestock Ewe Lamb is an opportunity for a current 4-H Sheep Member to win a ewe lamb for next year's fair! The winner is determined by Total Aggregate Points & A panel Interview!



BEEF SHOWMANSHIP

- Members are judged on the appearance of their animal and the manner they exhibit their animal in the ring
- Showmanship also exhibits the training of the members' 4-H project

Equipment needed is:

- A show halter- held with both hands while leading the animal- right hand on the shank with a firm grip to keep control; left hand holds the remainder of the lead strap, along with the show stick
- Show stick- is held in left hand while walking in ring; a tool to help set your beef animal up and to keep your animal relaxed while standing in the ring by scratching its belly
- Scotch Comb- is carried in your back pocket and used to comb up the hair on your animal after the judge has touched it and for grooming purposes
- Members enter the ring and circle in a clockwise direction at a brisk walk
- Showmen lead on the left side of the calf so the judge will have a full frontal view
- Keep the calf's head up at all times to display alertness but also makes the top line appear straighter
- Be courteous in the ring as a sign of sportsmanship- help get the animal ahead going, but members should ask before helping in case it kicks and leave enough space between animals so allow the judge to view the calves from every possible angle
- Once stopped, members must set up their animal with feet square under the body and stay in a straight line around the ring
- Members keep the calf content by gently scratching the belly with the show stick and scratching also keeps the top line straighter
- When the judge approaches the animal, the member moves giving the judge a full view at all times and must be ready to answer any questions about their animal
- If the judge touches the animal, the member will use their scotch comb and comb the hair in that particular area showing pride for your animal's appearance
- When lining up- members should leave enough room between animals so the judge has views from all angles
- If animals move while in line, members must maneuver their calf in a clockwise direction through their place in line (a figure 8)
- Members should never stop showing their animal- even if they're in last place

BEEF MARKET CLASS

- Steers are judged as if they are going to market today- the judge is looking for finish throughout- meaning fat cover evenly across the ribs, the top line and on the point of shoulder which is the last place to get covered
- Steers shouldn't be over finished because the excess fat is WASTE to the consumer and/or the buyer
- After finish the judge is basing his decision on confirmation- spring of rib, depth of body, muscling, well balanced (the front or the rump are no larger than one another)



YALE COUNTY 4-H BEEF CLUB

2008 BRANDON, Chance

4-H BEEF CARCASS

5000 HOGGARD, Waylon

5004 WURTZ, Greta

5001 MARTINDALE, Mya

5005 WEDLER, Colton

5002 COMRIE, Tavish

5006 WEDLER, Emma

5003 KLEISSEN, Sylar

OPEN SINGLE MARKET STEERS

1000 BUCHER, Nicholas

1003 SANDY-GUSTAFSON, Mackenzie

1001 HALLSTROM, Kendra

1004 ARDUINI, Marianne

1002 RIVERBEND ORCHARD

OPEN SINGLE BEEF CARCASS

1050 BAR J BAR CATTLE COMPANY

1055 MADDY MILLS CATTLE CO.,

1051 BRANDON, Chance

1056 MILLS, Maddy

1052 HAUGHTON, Cara & Laurie

1057 SOUTHLANDS RANCH

1053 HAUGHTON, Doug

1058 WEDLER, SUSAN

1054 HAUGHTON, Jim

1059 CAMPBELL, Holly

Come and 'Meat' Us!

6453 Buckhorn Road, Lot 20, Kamloops BC, V1S 2A1

Phone: 250-828-1015

Email: kamlakebutcherboys@gmail.com

Retail Store Hours: Monday to Friday: 7:30am-4:30pm;

Closed Saturday, Sunday & Stat Holidays

Specializes in custom cutting, smoking & sausage making.
Our Country Meat Market carries a wide selection of natural,
local and homemade products.





PROVINCIAL WINTER FAIR 2022 SCHEDULE OF EVENTS



THURSDAY, SEPTEMBER 22, 2022

- 8:00 AM** Animals may be moved into stalls - **Covered Arena**
12:00 PM Craft & Commercial / Food Vendors may begin to set up - **Main Street**
3-6:00 PM **Sheep Weigh - Sheep Stalls**
4-6:00 PM **Beef Weigh - Beef Stalls**
6:00 PM All Beef & Sheep Projects to be in barn;
Poultry & Photography Projects to be in barn (Optional)
6:00 PM **Deadline to Enter Heifer Pairs & Ewe Lamb Pairs (If necessary)**
6:30 PM Live Sheep Carcass Judging - **Main Ring - Covered Arena**
7:00 PM ALL LEADERS MEETING (May disperse into divisions afterward) -
Main Ring Bleachers
7:30 PM Senior Members Meeting - **Main Ring Bleachers**

FRIDAY, SEPTEMBER 23, 2022

- 8:00 AM** Deadline for Poultry and Photography Projects must be in barn on display
 Educational Displays Must be on Display - **Ed Display Area**
8:00 AM Stall Competition Begins - Beef, Sheep, Poultry
8:30 AM 4-H Sheep Members Judging - **Main Ring - Covered Arena**
9:00 AM **Kids Lawn Games (ALL DAY) - Kids Zone (Main Street)**
 Education Display Judging - **Ed Display Area**
9:30 AM 4-H Beef Members Judging - **Main Ring - Covered Arena**
10-11:00 AM 4-H Sheep Trim & Fit Competition - **Sheep Fitting Area**
10:30 AM Food Vendors Open - **Valhalla Smoke House - Main Street**
-5 PM
11:00 AM Poultry Showmanship - (Live Streamed) - **Main Ring - Covered Arena**
 -Youth Open, 4-H
12:00 PM 4-H Beef Grooming & Fitting Competition - (Live Streamed) - **Main Ring - Covered Arena**
12:00 PM Deadline to Use 4-H Female For Showmanship (Beef & Sheep)
 Deadline of any female projects, poultry projects to be included in Sale
 Deadline for Beef & Sheep Group Class Entries
Deadline for Home Grown Class Entries
12-4:00 PM Horse Unit Work - Mountain Trail - **Mountain Trail Course**




CAMPBELL & COMPANY
 Chartered Professional Accountants
 www.campbellco.ca

ACCOUNTING • TAX • ADVISORY
 Call or email to book an appointment
 tf: 1-800-846-9190
 e: ca@campbellco.ca
 KAMLOOPS • BARRIERE • VALEMOUNT



Event Venue ♦ Weddings ♦ Family Reunions ♦ Special Occasions ♦ & More

Grandview Acres
 3531 Long Lake Road ♦ KNUTSFORD, B.C. V0E 2A0
 Phone : 250-372-1609
 Email : mogge@grandviewacreskamloops.com
 Website: www.grandviewacreskamloops.com




Circle Creek Equestrian Centre

Circle Creek offers Horse Boarding on a monthly or nightly basic & Special Events such as competitions and clinics.

The facility is also available to rent to host your special equine event.

If you have questions about Horse Shows, Horse Clinics, and Equine Events, please contact:

COLLEEN 250-682-1002 (cell)

circlecreek@telus.net

**SATURDAY, SEPTEMBER 24, 2022 - continued...**

- 3:00 PM** 4-H Beef Carcass Judging - **Carcass Cooler - Covered Arena**
4:00 PM 4-H Sheep Carcass Judging (estimated time) - **Carcass Cooler**
- 4:00 PM** 4-H Round Robin Showmanship – **Horse - Outside Arena**
5:00 PM 4-H Round Robin Showmanship – Sheep - (Live Streamed) -
Main Ring - Covered Arena
- 6:00 PM** Indigenous Presentation - Land Acknowledgement,
 Welcome Song & Prayer
 - (Live Streamed) **Main Ring - Covered Arena**
- 6:30 PM** 4-H Formation & 4-H Pledge - (Live Streamed) - **Main Ring - Covered Arena**
- 7:00 PM** 4-H Market Lamb Group Classes - (Live Streamed)
 4-H Beef Group Classes
 Beef & Sheep Carcass Competition Results
- 8:30 PM** Pioneer Events - **Main Ring - Covered Arena**

SUNDAY, SEPTEMBER 25, 2022

- 8:00 AM** Stall Competition Begins - Beef, Sheep, Poultry
8:30 AM 4-H Photography Judging - **Photo Area - Covered Arena**
- 9:00 AM** **Kids Lawn Games (ALL DAY) - Kids Zone (Main Street)**
10:00 AM Open Beef Showmanship - (Live Streamed) - **Main Ring - Covered Arena**
 Expert/Novice/Beginner
- 10:30 AM** Food Vendors Open – **Valhalla Smoke House - Main Street**
-3:30 PM
- 10:30 AM –** **Facepainting by Denise – Covered Arena**
2:30 PM
- 11:00 AM** 4-H Beef Showmanship - (Live Streamed) - **Main Ring - Covered Arena**
 Senior/Intermediate/Junior; Championships to Follow each division
 4-H Beef Showmanship Champion
- 12:15 PM** 4-H Photography Showmanship - (Live Streamed) -
Photography Area - Covered Arena
- 1:30 PM** Open & 4-H Beef Market Weight Steer Classes - (Live Streamed)
 - **Main Ring - Covered Arena**
- Open, 4-H, Championships to Follow
 Grand Champion Market Steer of the Show
 4-H Beef Homegrown Steer Class

OPEN BEEF HEIFER & PROSPECT CALVES

- 7000 Tiel, Isabelle (Prospect Steer) 8000 Rafter, Lazy S Ranch (Y. Heifer)

OPEN BEEF SHOWMANSHIP

- 1000 BUCHER, Nicholas (Beginner) 1002 RIVERBEND ORCHARD (Novice)
 1001 HALLSTROM, Kendra (Novice)

4-H EDUCATION DISPLAY COMPETITION

- 1100 Comrie, Portia (Lower North Thomp.) 1102 Wilson, Paige (Pritchard 4-H)
 1101 Hallstrom, Jacey (Lower North Thomp.)

**What are 4-H Cloverbud Projects?**

These projects are for the "Future 4-Hers"! 4-H British Columbia Cloverbud members are boys and girls aged 6 - 8 years old. They must have reached their 6th birthday and have not reached their 9th birthday by January 1st.

4-H British Columbia Cloverbud age members are only allowed to be registered in the Cloverbud project and are not eligible to be enrolled in any other 4-H British Columbia projects.

The Cloverbud units are very busy with fun filled activities that explore future projects of 4-H. Cloverbuds can choose to enroll in one of the three 4-H British Columbia Cloverbud units.



**Mark & Ellen
Brown**

**Proud Platinum Sponsors of the
84th Provincial Winter Fair**

**FRIDAY, SEPTEMBER 23, 2022 continued...**

- 1:00 PM** 4-H and Open Sheep Female Competition - (Live Streamed)
- **Main Ring - Covered Arena**
- Open Ewe Lamb, Yearling Ewe; Open Female Championship
- 4-H Ewe Lamb, Yearling Ewe, Ewe w/ Lambs at Foot
- Ewe Lamb Pair Class (If necessary)
- 4-H Sheep Female Championship
- Supreme Sheep Female Championship
- 2-5:00 PM** **Uncle Chris the Clown - Kids Zone (Main Street)**
- Cloverbud Activities
- 2:00 PM** 4-H & Youth Open Poultry Unit Work - **Poultry Stall Area – Covered Arena**
4-H Poultry Members Judging - **Poultry Stall Area – Covered Arena**
- 3:30 PM** 4-H and Open Beef Cattle Female + Young Beef Classes - (Live Streamed) -
Main Ring - Covered Arena
- Open Heifer, Open Prospect Calf
- Open Beef Female Championship
- 4-H Heifer, 4-H Cow-Calf, 4-H Young Beef
- Heifer Pairs (if necessary)
- Commercial Female Class (if necessary)
- 4-H Female Championship
- Supreme Beef Female Championship
- 5:00 PM** Round Robin 4-H Showmanship – Beef - (Live Streamed)
Round Robin 4-H Showmanship – Poultry - (Live Streamed)
Main Ring - Covered Arena

SATURDAY, SEPTEMBER 24, 2022

- 8:00 AM** Stall Competition Begins - Beef, Sheep, Poultry
ALL DAY 4-H Photography - Unit Work - **Photo Area - Covered Arena**
8:30 AM 4-H Sheep Showmanship Classes - (Live Streamed) -
Main Ring - Covered Arena
- Senior/Intermediate/Junior; Championships to Follow each division
- 4-H Sheep Showmanship Champion
- 9:00 AM** **Kids Lawn Games (ALL DAY) - Kids Zone (Main Street)**
10:30 AM-6PM Food Vendors Open – **ARMA Greek Food Truck - Main Street**
12:00 PM **Deadline to Sign-Up for LEVERE LAMB Award**
12:30 PM Youth Open Sheep Showmanship - (Live Streamed)
- Championship to Follow
- 1:30 PM** Market Lamb Weight Classes - (Live Streamed)
- Youth Open, Championship
- 4-H, Championship
- Open, Championship
- Grand Champion Market Lamb Class to Follow
- 4-H Homegrown Lamb Class



**Contribution of beef production
to  's economy each year:**

\$22 BILLION

Source: Canadian Beef via Statistics Canada. Note: figure rounded up from \$21.8 billion, based on average economic contribution from 2018-2020. Date: 1/25/22



WEAVER LEATHER LIVESTOCK

For your show supply needs,
we've got you covered

CHOOSE QUALITY



THE HORSE BARN

Art Gallery & Gift Shop
Posts & Rails
Western & English Wear
Western & English Saddles & Tack
Clearance Center
Custom Embroidery

517 Mt. Paul Way, Kamloops
250-374-3511 www.horsebarncanada.com