

# OSHAWA CANADA

The Oshawa Development Co.  
: L I M I T E D :

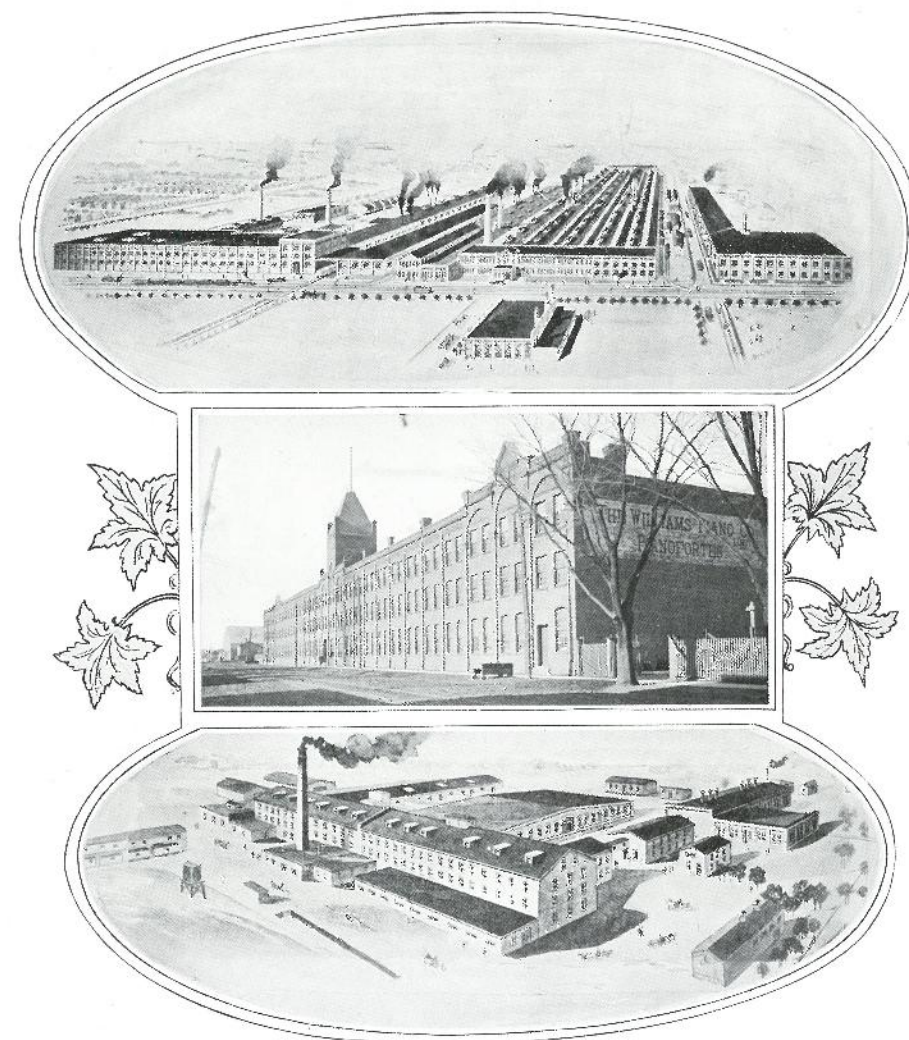
TORONTO  
CANADA .





# OSHAWA

## THE MANCHESTER OF CANADA



THE OSHAWA DEVELOPMENT COMPANY Limited  
TORONTO - - - CANADA

President  
ALFRED BUTLER

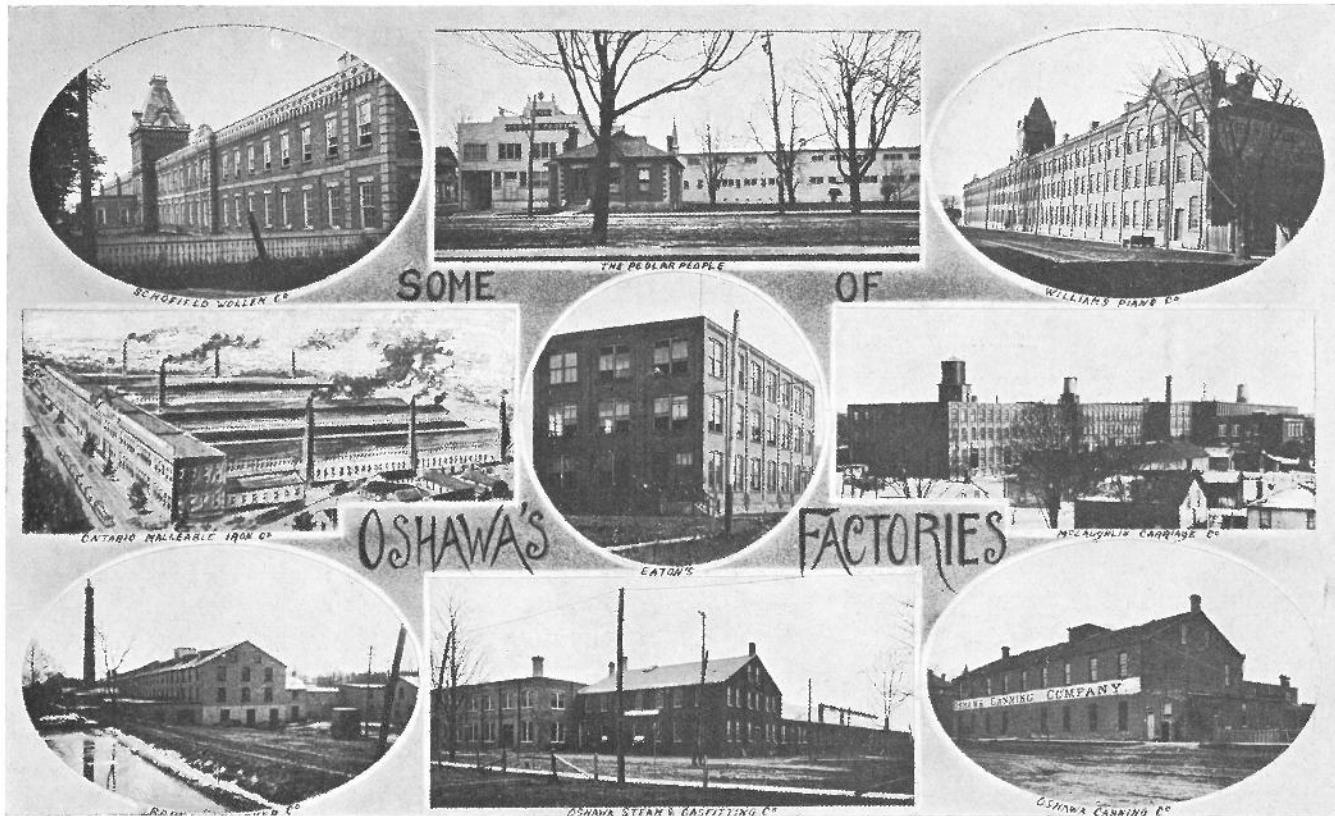
Sec.-Treasurer  
C. W. CHANT

Board of Directors  
J. R. L. STARR, K.C. | DR. THOS. BUTLER | W. J. J. BUTLER

Bankers  
STANDARD BANK OF CANADA  
Cor Clinton and College Sts., Toronto

Solicitors  
MASTEN, STARR & SPENCE  
Canada Life Building - Toronto





## Confidence

We have faith in Oshawa—we have faith in Ontario—we have faith in Canada. We are filled with confidence. We know it must grow—we know it will thrive and prosper. It is a new country, abounding on all sides with opportunities to make good. INDUSTRY is the key-note of success. We have to labor and work hard, we have trials and tribulations, and we have difficulties. All these come in their turn—but we grapple as a whole successfully and in unity. Foresight is all that is necessary to make money. Of course, care must be exercised in the selection of the investments. Oshawa stands out pre-eminently as a most desirable community for the investment of outside money, because the success of those already located will mean success to those who come alongside. To every purchaser of a lot we will forward immediately a clear and valid title, registered at the County Registration Division at Whitby for the County of Ontario. We represent the property to be exactly as described in printed matter. We invite the most rigorous investigation and will cheerfully furnish any information desired.

To any English manufacturers contemplating the location of a branch in Canada we say—locate in Oshawa! Every advantage is offered. Good sites, good electric power, good water and sanitary service, street car, excellent shipping facilities, good fire protection, etc., etc. The Board of Trade and civic officials will be glad to give any advice or information desired at any time. Write to us and tell us your wants.



*Post Office, King St. West*

IF  
YOU  
HAVE  
MONEY  
INVEST  
THAT  
MONEY  
IN  
OSHAWA

**B**UY A LOT OR TWO IN INDUSTRIAL PARK. IT WON'T BE VERY LONG BEFORE THE DEMAND WILL ELEVATE PRICES AND YOU CAN RE-SELL AT A SUBSTANTIAL ADVANCE. LOOK AT THE PHOTOGRAPHS. THEY SHOW DEFINITELY WHAT YOU ARE BUYING. YOU KNOW YOUR TURN TO SELL WILL COME WITHIN A SHORT TIME, AND THAT GOOD PROFITS WILL BE MADE



*North Simcoe St.—Catholic Parish Buildings*





*Machine Works of R. Woon & Co.*



*Oshawa Hospital—almost opposite Simcoe Heights*



(Toronto World.)

## Three New Railways are to Develop Industrious Oshawa

Canadian Pacific has cut thru centre of Town with its new Main Line to the East—Canadian Northern already giving service—Toronto and Eastern secured entrance along the main streets of growing industrial centre.

For many years Oshawa, one of the most enterprising towns in Ontario, has been held back by the lack of railway accommodation. The Grand Trunk Railway, with its customary disregard of the situations of towns and cities thru which its lines were built, passed a mile and a half to the south of the main corners of Oshawa. But within the last two years the railway situation has entirely changed. The Canadian Pacific have cut thru the centre of the manufacturing district of the town with the new main line from Toronto to the east. The Canadian Northern has already built a spur two and a half miles long from their main line, which they have contracted to electrify within eighteen months, while the Toronto and Eastern, the radial railway which will connect up Toronto with several of the eastern Ontario centres, has an entrance into the very heart of the town.

What this change of conditions will mean to Oshawa is hard to determine. In spite of the fact that the town was for many years served by one indifferent railway, and even in the face of this handicap many industries whose products are widely known and used thruout Canada, have located there. One of the largest of Oshawa's industries is the Oshawa Malleable Iron Range Company, who have just completed a large addition to their plant. It has now on its payroll in the neighborhood of 800, while the McLaughlin Carriage Company, an excellent example of the growth of Oshawa's manufactures, has trebled in size during the last three years, and now employs almost a thousand hands. Fittings Limited, manufacturers of office, bank and interior fittings have been steadily increasing their plant until now they are regularly employing 400 hands. The Pedlar People, of Oshawa, have become cramped for space, and a short time ago they purchased nine acres which is the site of a large model factory to cost in the neighborhood of a quarter of a million dollars. Among the other thriving industries located in Oshawa could be mentioned the Oshawa Cannery Company, which has an annual output of 75,000 cans. The R. S. Williams Co., piano manufacturers, the Schofield Woolen Mills, Gay Bros.,

the T. Eaton Company, Limited, of Toronto, J. Sykes and Sons, Dixon Lumber Mills, the R. Woon Company, H. Gray and Sons, R. H. James, the Oriental Textile Company, S. Dillon and Sons, Stacey Builders Limited, Bricks Limited, and Concrete Products Limited. There is hardly a factory in Oshawa not extending its plant and adding more men to its staff.

Oshawa's harbor is about to be improved by an expenditure of half a million dollars. Work has already been commenced, and about \$250,000 will be spent this year. The improvements consist of a large harbor of refuge, 1000 feet wide, 1200 feet long, with a retaining wall 25 feet high, and two breakwaters 300 feet apart, extending several hundred feet into the lake. A water depth of 25 feet will be sufficient to allow the largest boats on the lakes to enter what promises to be the best harbor between Toronto and Montreal.

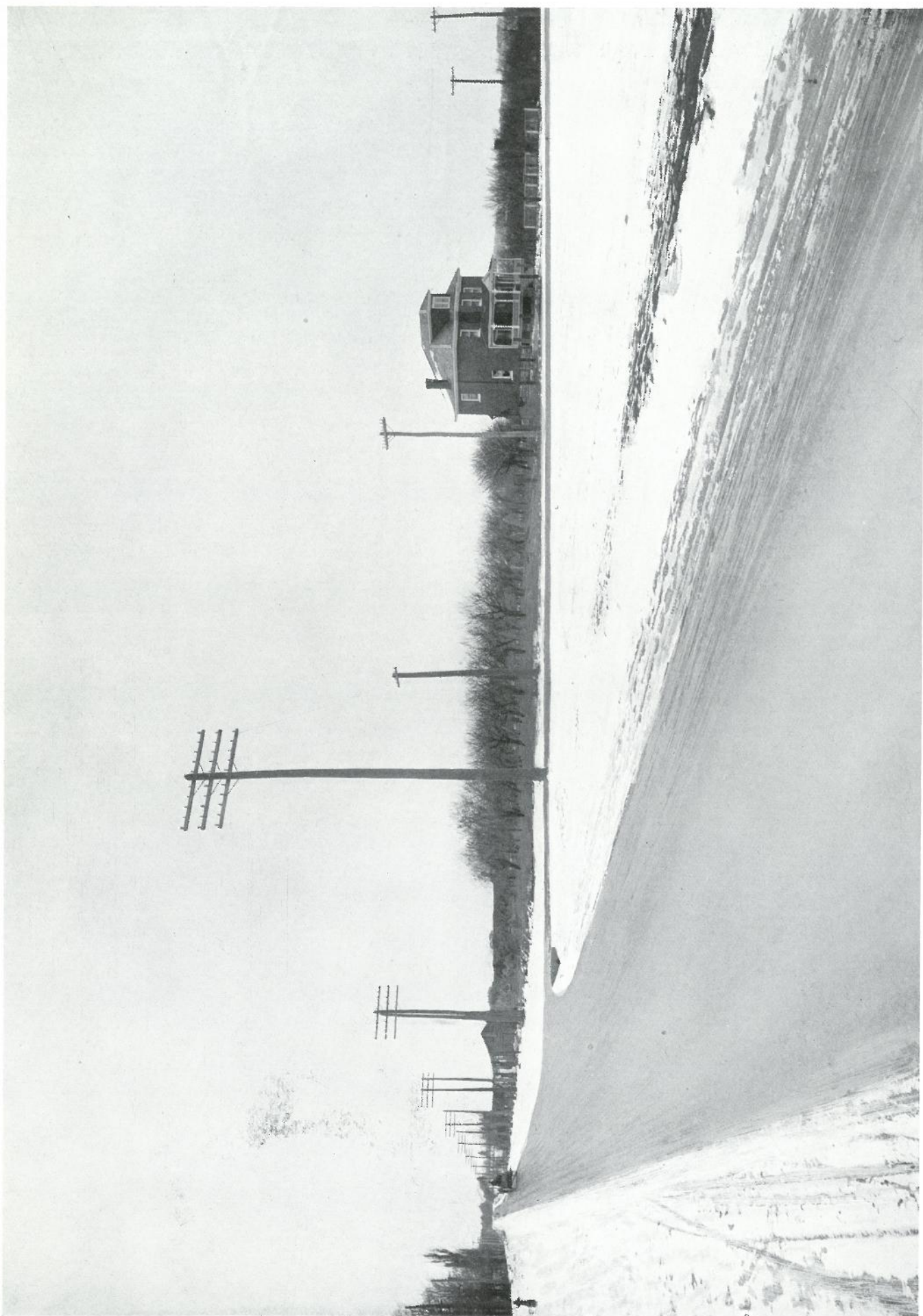
One of Oshawa's greatest assets is its electric lighted, well paved streets. Its sewers and water-works are municipally owned.

A town of beautiful homes is one of the outstanding impressions a visitor to Oshawa receives. Along Simcoe Street, which is the main business thoroughfare in the heart of the town, but gradually changes into a residential street, high-class homes, built on modern architectural lines, bespeak the prosperity and civic pride of the people. Most of the workingmen own their homes, but the steady growth of the older industries, and the coming of new ones is causing such a scarcity of housing accommodation that several manufacturers took it upon themselves to build houses for their employees.

Up to a short time ago public-spirited men have handled the town's interests, but Oshawa has now an enterprising board of trade, which is said to be completing arrangements for the bringing of several large manufacturing concerns. With its natural advantages, and with a good publicity commissioner, to bring these advantages before the manufacturers of England, Canada and the United States, Oshawa should soon rise into the ranks of one of the important cities of the country.







*View of Simcoe Heights—acknowledged to be the most valuable un-built up acreage in Oshawa. Located on the main street, it is only one minutes walk from the car.*

## Simcoe Heights—Finest Acreage in Oshawa

The main north and south street of Oshawa is Simcoe Street. Simcoe Street intersects King Street, and it is here that the business section lies. Three leading banks of Canada occupy the buildings on three corners, and the stores, warehouses and city buildings occupy adjacent sites. South Simcoe Street—a short distance removed from the business area—is built up with homes, and North Simcoe Street is also built up as far as Simcoe Heights, with fine residences. It is here that the best homes of Oshawa are located. Simcoe Heights is a very choice area of land immediately alongside of the homes now erected. In all it measures a shade over sixty-eight acres. The street car runs to within a minute's walk of the property. A concrete road, built by the corporation passes along the entire property, and sewers and sidewalks as well as water and electric light, are available to those who build homes here. The manager of one of Oshawa's Banks has purchased the corner lot of Simcoe Heights and Aberdeen Street for his home, and the leading managers of several Oshawa manufacturing concerns have opened negotiations for the purchase of sites for their homes, notwithstanding the fact that the property has never been offered for sale, except en bloc. This property is in the immediate line of the most exclusive development of Oshawa. Nothing its equal is obtainable in Oshawa. Photographs are shown illustrating the level lay of the land and its contiguous location with relation to the already built-up section. Sixteen acres of this property is covered with fruit bearing trees. Investors are afforded an opportunity of purchasing Simcoe Heights at a price that will undoubtedly return a handsome profit on the purchase. It will pay to put your money in Simcoe Heights, Oshawa. We do not know of a better buy anywhere.

Just across the road are located (1) The waterworks municipally-owned pumping plant. (2) The beautiful public-owned recreation grounds, Alexandra Park, where the band concerts, athletic meets, annual fair, picnics, and other public events are held. (3) The Oshawa Hospital.

Within one minute's walk of this property are built some of the finest homes of architectural beauty in Oshawa. Two minutes' walk and the High School building is erected on the same street with a wide area of playgrounds for pupils.

On Simcoe Street the following buildings are erected :—

- |   |  |
|---|--|
| 1. The immense manufacturing plant of the Pedlar People, who we are informed are now arranging to build a quarter million model factory on an additional site recently purchased. | 7. The recently erected Armouries.               |
| 2. The Bishop Bethune College.  | 8. The High School.                              |
| 3. The Y M. C. A. Building.   | 9. Mayor's Residence and Prospect Park.          |
| 4. The Public Library.  | 10. Catholic Church, School and Parish Building. |
| 5. The Reformer Newspaper Office, and Boy Scout Club Rooms.   | 11. Dominion Bank.                               |
| 6. Civic Buildings.   | 12. Standard Bank.                               |
|   | 13. Queen's Hotel.                               |
|   | 14. Salvation Army Citadel.                      |

Buy land in Oshawa, the Manchester of Canada. Its growth will make money for those who grasp the opportunities presented. Profits are sure, safety is positive and prices quoted are most conservative. Rigorous investigation is invited and references from the most prominent men of the country may be obtained in relation to the integrity and responsibility of the shareholders and officials of the Company.



## LOOK TO CANADA!

THE bonds of fellowship, the ties of patriotism, and the feeling of relationship between those of the Motherland and the citizens of Canada are magnified to-day and emphasized as they have never been before. It is fitting, therefore, that the attention of the folk in the British Isles should be focussed on the achievements of Canada. Its past record inspires confidence, and a wonderful future is assured. The land is very young, only the first stage of development has been effected. It is a country of fertile soil, rich earth, mighty forests, precious mines, running hordes of fish and countless other bounties of Nature.

Absolutely safe, sound, sure investments are to be secured devoid of all speculative, get-rich-quick features. Canada presents an unequalled field for human as well as financial enterprise. On the termination of the European conflict Canada will experience an agricultural and industrial revival unequalled in the history of the world.

Canada to-day stands fifth among the wheat growing countries of the world, yet it is estimated that only one-seventh of the arable land in Manitoba, Saskatchewan and Alberta is under cultivation. Wheat is but one of the many national assets which Canada has just commenced to realize upon. She is fast developing into an industrial country as well, and wonderful prospects await the advent of new capital in this branch of the country's future.

On another page will be seen some of the statistics to bear out the rapid strides that have been accomplished up to the present. Canadians have toiled hard and wisely, and their reward has been to see their country's trade and commerce double itself in a decade. Yet Canada is not booming. She is rather settling down to a period of actual substantial progress in an era of conservative capitalization.

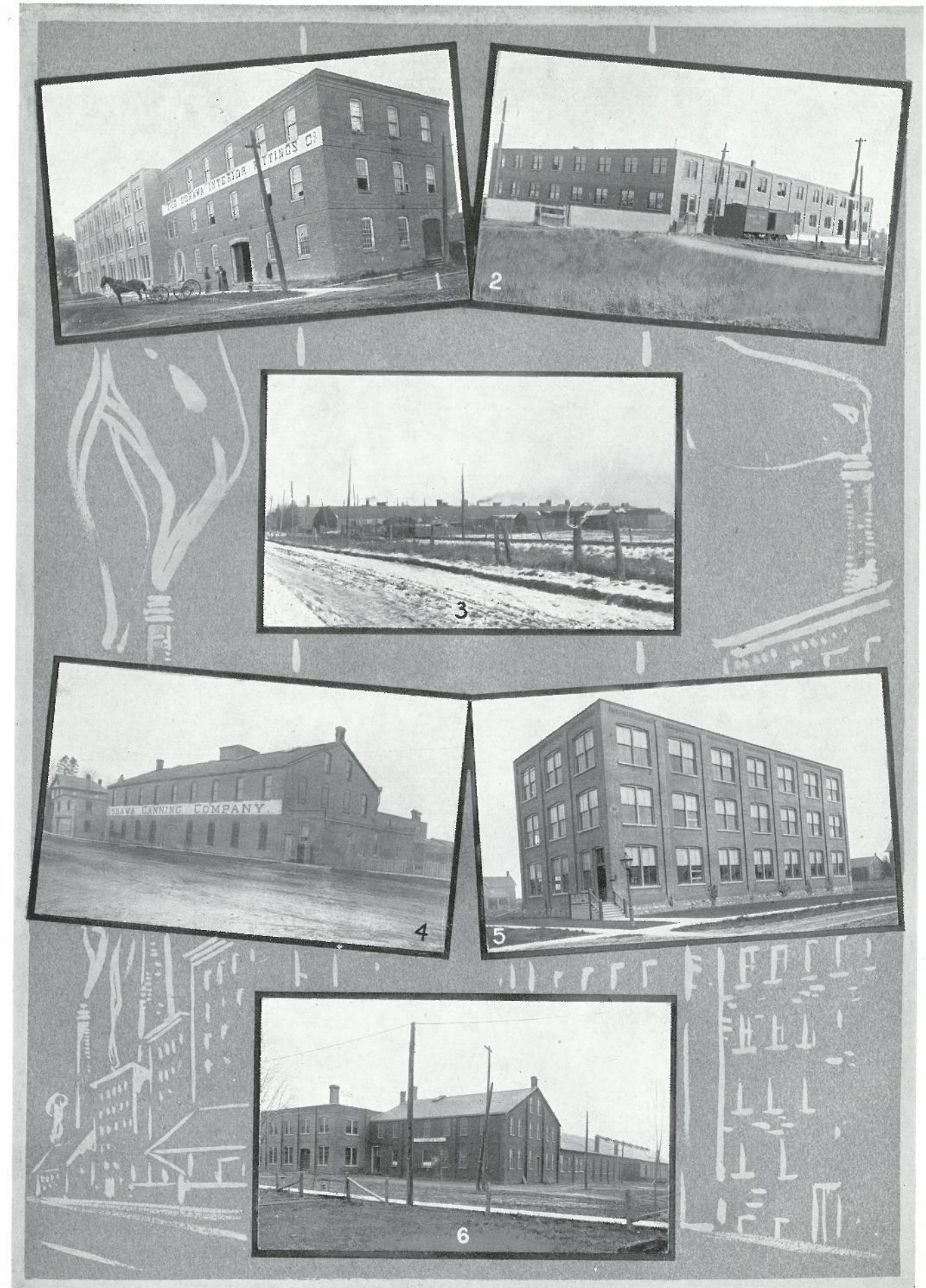
With the backing of the British Empire—not even a world war can hold Canada back. The Western Provinces of Canada are recognized as great wheat growing and ranching sections. Ontario is recognized as a mixed farming, mineral, lumbering, fruit growing and manufacturing section. Ontario's industrial concerns ship their products not only to all points of the country, but to all parts of the world. Ontario is one of the oldest provinces, and is therefore foremost in regard to its present development. Thirty-four miles from Toronto, on the shores of Lake Ontario, lies Oshawa, known throughout Canada as one of the most promising manufacturing towns of the country. It is at present a community of 9,000 inhabitants—a centre of thriving industrial and commercial wealth.

Oshawa holds an enviable reputation for steady, consistent progress and stability. Not only are there manufacturing industries giving work to—it is estimated over 2800 men—but it is surrounded by one of the best agricultural sections in Canada. More freight was shipped from Oshawa last year than from any point between Toronto and Montreal, and practically the entire output was handled by the Grand Trunk Railway.

Foreseeing the immense possibilities of Oshawa, the Canadian Northern Railway and the Canadian Pacific Railway, also on the alert for good territory, have now finished the construction of a line through Oshawa, and are operating a passenger and freight service. In addition, the Toronto Eastern Electric are now constructing a radial railway connecting Oshawa and Bowmanville with Toronto. Follow the railway builder and you make money.

Oshawa will now have Canada's four railways where formerly only the Grand Trunk service was provided.

These factories, along with others illustrated elsewhere, are the backbone of Oshawa





## The Evolution from a Town to a City

Oshawa's population has increased faster than Toronto's, and Toronto has been called the fastest growing city in America. Between 1900 and 1913, Oshawa's increase was 69%, and since 1908—in six years—Oshawa's population has nearly doubled. Oshawa has reached a point where it cannot stop. It must forge ahead. The development of three single factories in Oshawa during the last five years—namely, the McLaughlin Carriage and Automobile Co. Ltd., the Pedlar People Ltd., and the Fittings Limited, warrants the statement that at the same rate of development in the next five years, they alone will employ enough men to double Oshawa's present population.

## Where Oshawa Stands with Other Cities

Oshawa stands sixth in the Province of Ontario in the value of its manufactured products. Oshawa out-distances the City of St. Catharines, the City of Stratford and the City of Galt.

Oshawa .....	\$6,200,000
City of St. Catharines .....	\$6,000,000
" " Stratford .....	\$5,000,000
" " Galt .....	\$5,000,000

### GROUP OF THREE CITIES COMBINED:

Kingston, Belleville, Brockville .....	\$7,128,000
--	-------------

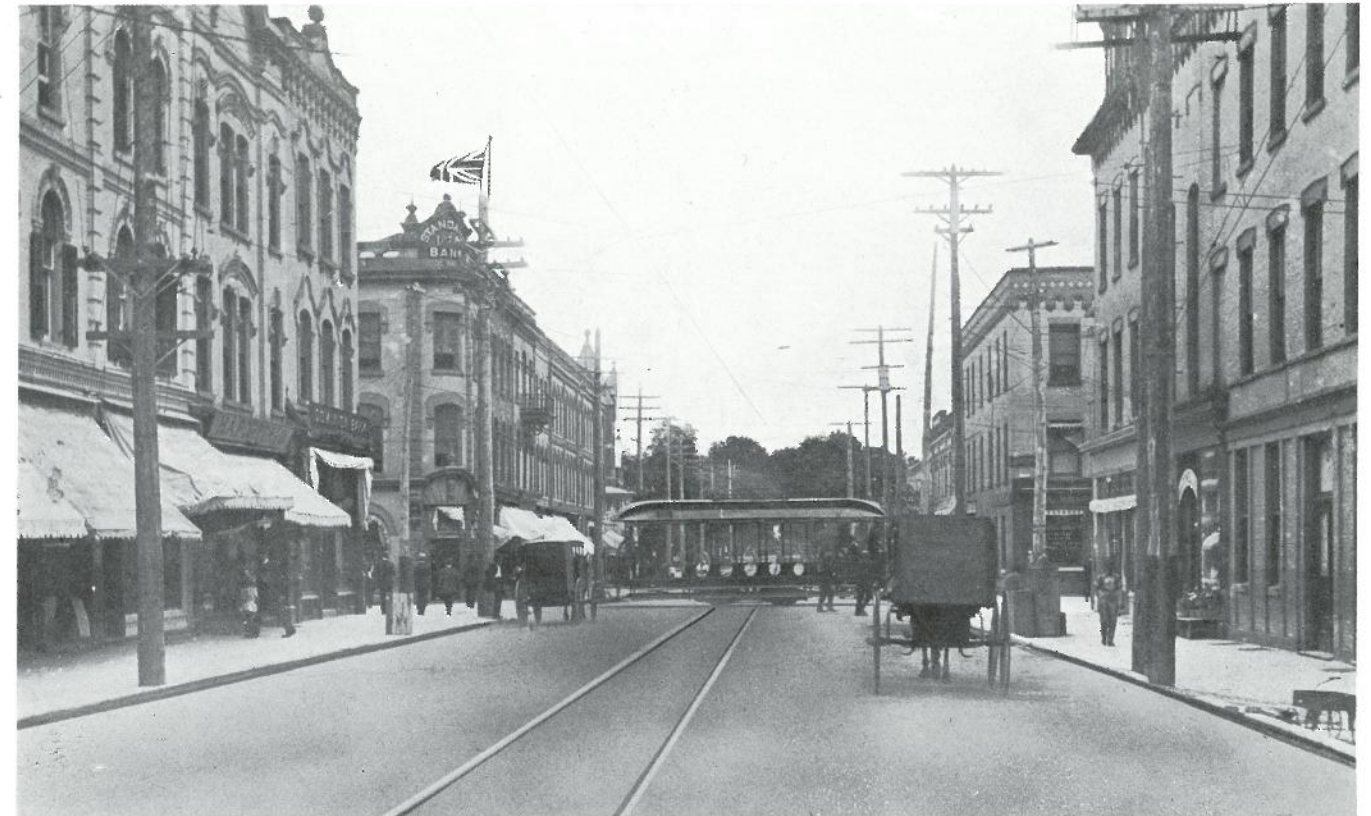
### GROUP OF FIVE TOWNS COMBINED:

Whitby, Bowmanville, Port Hope, Cobourg, Orillia .....	\$6,132,000
--	-------------

The Oshawa Development Co. Limited are the largest owners of land in Oshawa, and our prices are such as to give every purchaser an opportunity to make a profit from the time of purchase. Industrial Park is located to the south east of the very heart of the town, and is the closest-in unbuilt-up territory in Oshawa. It lies in a direct path of the growth of the town, and the next homes to be built must be built in Industrial Park or go further out. All the lots that have been sold have been purchased by local people who have seen the land and purchased after inspection. Exactly the same prices were paid by Canadian purchasers as are quoted herewith.



## The Four Corners



Corner Simcoe and King Streets—Centre of Business Area

## Oshawa is the Leading Town of Ontario

**CANADIAN COURIER** of April 5th, 1913, in a two-page article, comments on Oshawa's development, increase in population, increase of factory production, revenue, etc., as follows:

(We have given only excerpts, as space does not permit to publish in full.)

"Situated on the north shore of Lake Ontario at a distance of thirty-three miles from Toronto, it is sufficiently distant from that city and from neighboring towns to be considered quite independent of them and a centre in itself. It has harbour facilities, an electric railway with factory spur, and will soon be served by all three trans-continental railways.

"No place can show a much greater variety of industrial production than Oshawa, outside the larger cities. It supports malleable iron works, several foundries, and factories producing carriages, motors, pianos, separators, woollen goods, white-wear, steel ranges, plumbers' supplies and piping, canned goods, sheet metal products, leather, interior fittings, hay forks and carriers, with a variety of smaller articles.

"Oshawa ranks fifth among industrial cities in the amount of wages paid per unit of population. Walkerville, Steelton and Maisonneuve, having already been eliminated, it is surpassed in this respect only by Preston, and that by a small margin. As Preston's per capita production falls considerably below that of Oshawa, this one item of superiority may be safely ignored.

"It is found that Oshawa stands eighth in the

per capita investment of capital in industry. Coupled with its excellent showing in other respects, this relatively high position in the list supplies further proof of its industrial importance.

"Industrial centres maintaining groups of industries, with which those of Oshawa may be more fairly compared, practically all show a lower degree of production than it does. Hamilton, Brantford, Galt, Chatham, Welland, Amherst, Steelton and Sydney are all under the hundred dollar mark, while Walkerville, Guelph and Berlin are only slightly above it. Oshawa's efficiency is accordingly well established.

"The final test applies to the growth of population. With an increase between 1901 and 1911 of 69 per cent., Oshawa's progress has been greater than that of any of the ten places mentioned in the first list, with the exception of Walkerville and Steelton only.

"Thus, in value of production per inhabitant, in independence of location, in variety of manufactures, in expansion of population, in the relative size of its wage scale and in industrial efficiency, Oshawa stands in the van of the manufacturing cities of the country, and is thereby fully entitled to be hailed as Canada's greatest industrial city.



## The Press Predict a Wonderful Future

### TORONTO WORLD:

#### ONTARIO IS THE BANNER COUNTY

"The World believes that the worst of the money stringency is over.

"We also believe that with the stringency disappearing, Ontario will experience a business activity unprecedented in our history.

"Poor streets and roads are the one great drawback in our cities, towns and country places. And we are badly in need of radial electric lines. We should have five hundred miles of these local lines running into the City of Toronto. The purchase of the Toronto Street Railway is the immediate key to such a system.

"But outside of this, Ontario is developing in all directions. Farm values are improving in many directions, and radial lines will greatly stimulate them. All the factory towns are overworked with orders, limited only by the inability of the work-people to get houses to live in. Every such town should have a local house-building association backed by the municipality.

### CANADIAN COURIER:

"Once a manufacturing establishment gets going in a certain spot, it continues to expand indefinitely. The growth of the country makes the industry larger instead of making it smaller. In addition, factories go where factories are. Manufacturers congregate together for several reasons. The more workmen there are in a town, the easier it is to increase or decrease staffs. The more factories in one place, the greater attention the

"Railway extensions in Ontario now under way will produce wonderful effects in older Ontario. The Canadian Pacific's lake-front line will stir up business in Whitby, OSHAWA, Bowmanville, this fall, and Port Hope, Cobourg, Belleville in the spring. There is to be a re-birth of all the towns on Lake Ontario, east of Toronto, by the stimulation, if not the competition, of the Canadian Pacific. The sixty years of Grand Trunk slumber in that fine district is to be rudely broken. And the Canadian Northern, which is also in the same country, has already helped to waken it up, and will do a lot more when it connects up Ottawa and Deseronto. But the Grand Trunk should anticipate what is coming. It has still the best position and outfit if it will only use it to the full. . . .

"Ontario is the largest block of good country on the whole North American continent, and is about to have a wonderful increase in settlers, in factories, in enterprise!

railways pay to that place.

"Again, factories brew factories. A big industry usually requires a great deal of material or parts which they themselves do not make. Hence other manufacturers come in to supply that demand. For example, an automobile factory may bring in its train various subsidiary factories for the manufacture of bodies, tops, painting and varnishing, brass goods and automobile tires.

### Extract from THE OSHAWA VINDICATOR A HALF MILLION FOR OSHAWA

Great Things Begun at the Harbor—Fifty-two Acres Bought—Surveyors at Work

"Whatever the pessimists may say the Government of the Dominion of Canada has faith in the future of Oshawa and has begun the spending of money to help the good work.

"Saturday, Dominion Engineer Kelly and his staff were engaged in surveying the metes and bounds of the harbor.

"Unofficially it was gathered that the Government had already made an appropriation of \$200,000 for this work, upon which it will ultimately spend half a million dollars in the near future.

"Fifty-two acres of land has already been purchased from Mr. Gordon Conant, and in addition to the harbor basin of 1000 feet square, it has been determined to make a ship-turning basin of 600 square feet. This is the preliminary work the engineers were working upon on Saturday."

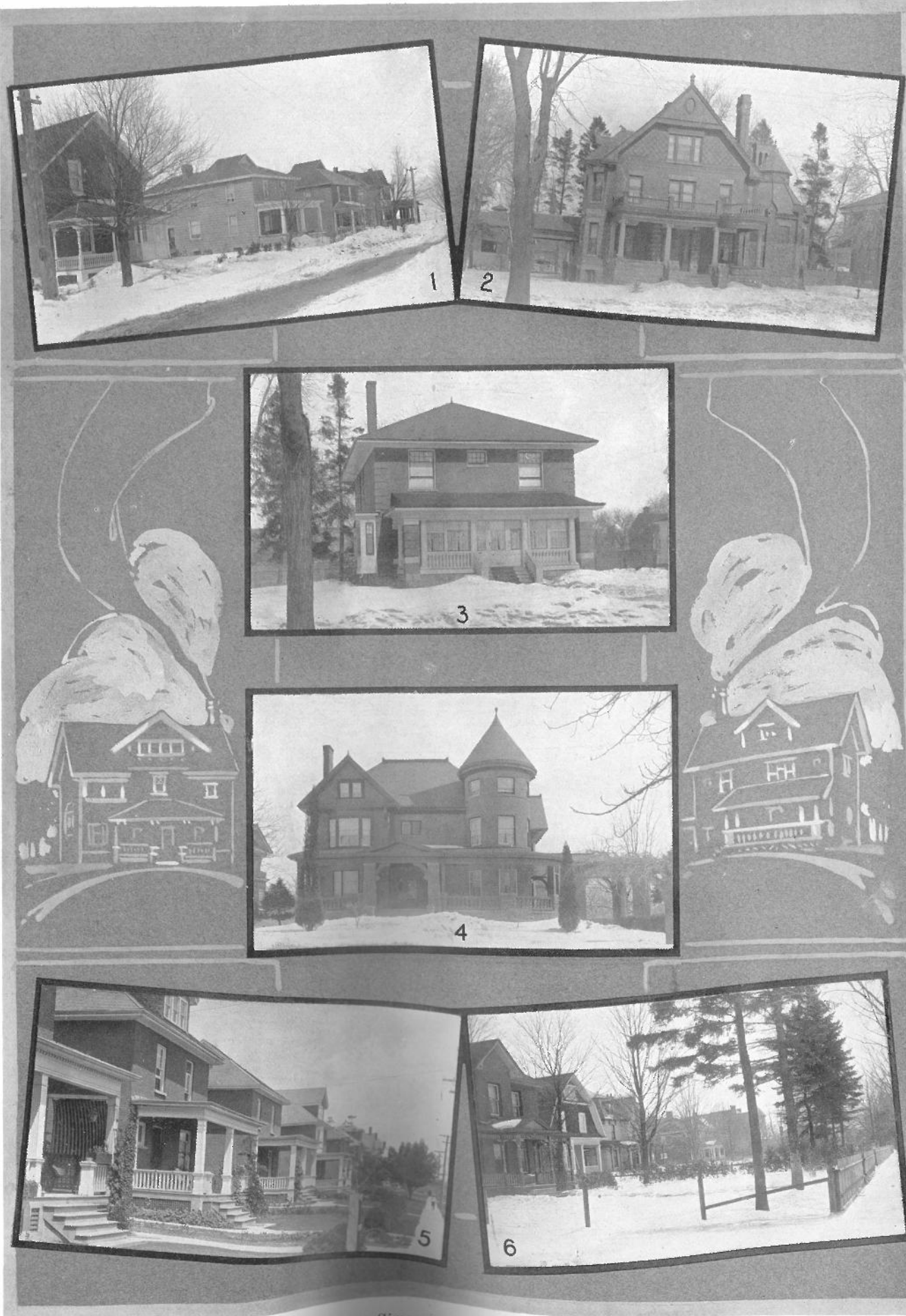
### Extract from THE OSHAWA VINDICATOR THE TORONTO EASTERN

Wakes Up and is Laying Steel in Oshawa—To Whitby and Bowmanville by New Years

"The Toronto Eastern Railway Company are busy grading and laying the steel for their electric line on Bond Street. The busy men and the busy teams make an interesting busy street in town. Monday they began laying the diamond crossing at the Oshawa Railway intersection at Bond and Simcoe Street North.

"At Engineer Harrison's Office it was learned that the order had gone out to complete the line east to Bowmanville and west to Whitby, and that it was expected that these Oshawan suburban towns would be connected up by the end of the year.

"It was not known yet whether cars would be run for the convenience of these three towns as soon as the steel was laid or not, but it was learned that it was under consideration to do so, and also to run cars on the C.N.R. spur as soon as possible thereafter. If this were done, the C.N.R. would get a line on the passenger traffic that would undoubtedly stay with it so long as the service was as excellent as it is after one reaches the line proper."



1. Mr. & Mrs. Simcoe St. East 400 (as far as Simcoe Heights, Laughlin's Residence). 2. Beautiful Residence E. I. Fowler, Ex-M.P.P.



## Your Money Will Grow in Oshawa

The photographs demonstrate the exact location of the land you are invited to invest in, in relation to the already built-up section of this busy manufacturing town. Note the stacks of the factories.

Industrial Park is recognized as being the best land in Oshawa available for home sites.

In Industrial Park Oshawa's Reeve of 1913 (now candidate for Mayor) purchased last year five lots.

Oshawa citizens have purchased land in Industrial Park.

Toronto builders are now building homes on Industrial Park.

The Town Council has already installed sewers on the farthest out street, and provision is being made to place sewers on the balance of the streets.

Electric light is now on Industrial Park.

The west boundary of Industrial Park is next door to Fittings Limited, one of the biggest factories; and the south boundary almost touches houses already erected, as does the north.

Industrial Park is right on the fringe. It stands in the direct path of the progress of this go-ahead factory centre. There can be positively no doubt but that enhanced values will prevail and accrue to the benefit of the purchaser of lots in this location. For one thing the prices are most reasonable—nothing in the vicinity is obtainable at anything like these prices. Secondly, the greater part of the property is already sold to local investors who will co-operate in the development of the land. Already builders have bought land to build homes on, and all these improvements are bound to increase the value of the remaining lots. Only a very limited amount remains unsold and it is the very best land in the block.

All who have seen this property are immediately impressed with its ideal location. Ten lots were transferred in 1914 to the factory adjoining. Local people know it is most valuable. Local people have purchased extensively and will purchase the balance in time, but an immediate sale is required by the owners.

Oshawa is a city in the making. Industrial Park is in the direct path. It was selected by the owners after careful consideration and is unequalled for central location and advantages. No one makes a mistake who buys a lot NOW. RIGHT NOW is the only chance. The prices are low, and the prospects bright. Just so sure as Oshawa forges ahead, these lots will grow into money—and Oshawa has only started. Nothing can retard its progress. The reader will be well advised to select a lot and hold as an investment. You cannot all go to Canada to work, but you can send a little money to work for you. The photographs speak for themselves. See the development on all sides. Note the level lay of the land. The men illustrated are standing on the very lots you have the privilege of purchasing. You can make no mistake in locating in Industrial Park. Do it now—sow to-day and you reap in the near future substantial profits.

### Views of Industrial Park—The Closest-In Land in Oshawa



*Drew Street, looking North, and immediately adjoining the big plant of the Fittings Limited and Electric Light Plant*



*Drew Street, looking South West, showing houses on the West and below the great Foundry of the Ontario Malleable Iron Company*



## The Next Homes that are Built Must Go In Industrial Park



*Every lot is high, level and dry*

## Noteworthy Items of Interest Strong Reasons Why You Should Buy in Oshawa

OSHAWA is fast emerging from a town into a city of factories.

OSHAWA has a great future. Manufacturers of the United States and the British Isles are directing their attention towards Oshawa.

OSHAWA now has the C. P. R. and the Canadian Northern Railway, as well as the Toronto Eastern Electric Railway, as well as the Grand Trunk, which up to now has had the exclusive patronage.

OSHAWA will have an immense expenditure on its Harbour. Just recently \$100,000.00 was expropriated by the Dominion Government as the first installment on the Harbour development.

OSHAWA outdistances in total value of products the city of St. Catharines. Taking the products of the cities of Stratford and Galt separately Oshawa is ahead of each of them by on easy million dollars. A group of cities, including Kingston, Belleville and Brockville, are all behind Oshawa.

is producing alone. A group of five towns, Whitby, Bowmanville, Port Hope, Cobourg, and Orillia producing less by some \$68,000.00 than the go-ahead town of Oshawa.

OSHAWA has a Street Car Service to the Railway Stations, Waterfront, and a free collection and delivery of freight to the doors of the manufacturers.

OSHAWA will have the finest harbour between Toronto and Montreal.

OSHAWA is paving its streets, lighting them with electricity, installing sewers, sidewalks and water service, and the necessary utilities to make it a city with a good civic administration.

OSHAWA'S population is a community of conscientious men of integrity—manufacturers of national reputation, and working men who are skilled in their vocations.

OSHAWA is the best factory town in Canada, will be one of the best factory cities in Ontario, and is the safest place to buy a lot for future profits. Buy in Industrial Park

## Entrance to Industrial Park from King Street

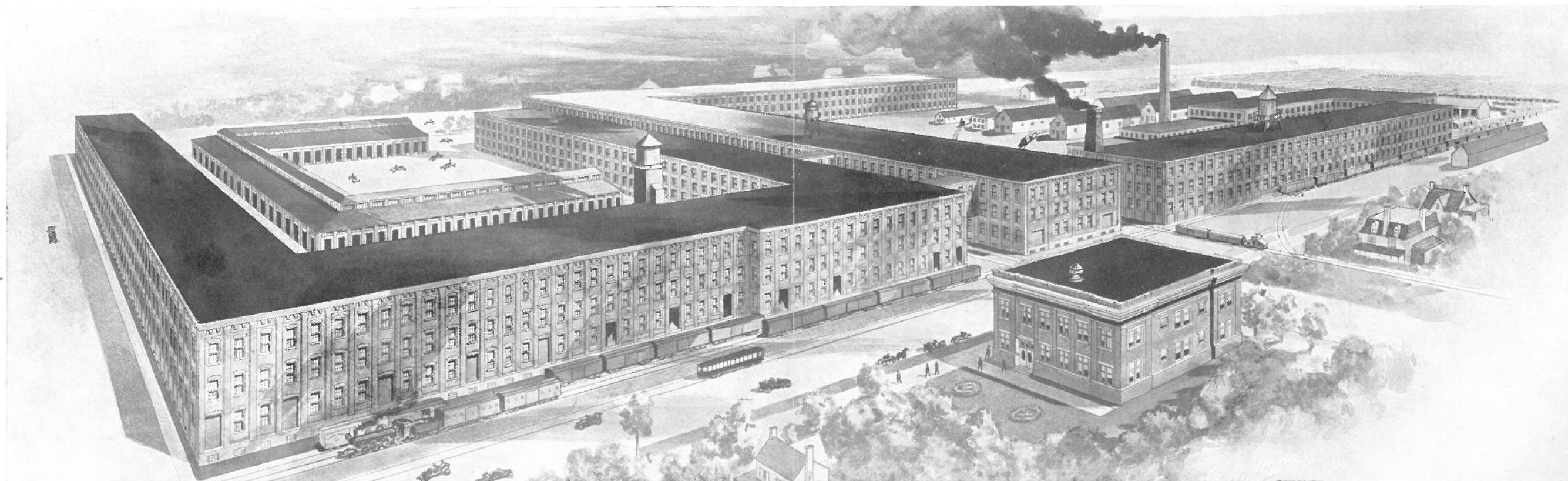


*Outside of Simcoe Street and King Street, Drew Street shown above, will be probably the best residential property in Oshawa*



*Looking South, Industrial Park adjoins the houses already built on three sides*



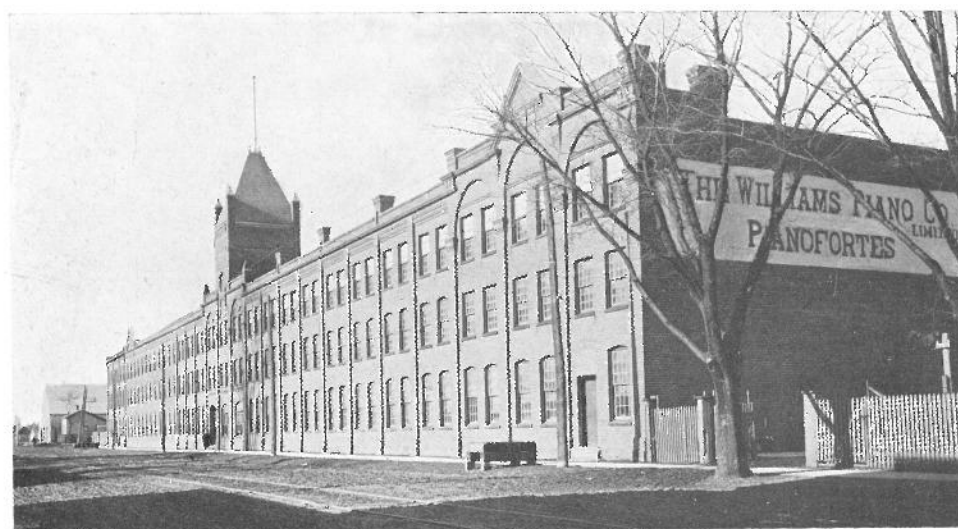


*A view of the enormous factory building of McLaughlin Carriage Co. Limited, largest manufacturers of automobiles under the British flag. Many skilled workmen are employed by this company. This is one of Oshawa's greatest industries*

Oshawa's growth has not been a mushroom growth. The factories have not sprung up over night. They rank foremost among the prominent manufacturers of the country. They are large employers of labor and consequently are of vital importance to the welfare of the town. New industries are locating in Oshawa, attracted by the improvements to the harbor and the greatly improved railway shipping facilities. Many millions of pounds are invested in the factory buildings and equipment. These men have faith in Oshawa. They are shrewd captains of commerce and their opinions backed by their capital are worthy of consideration.

Considerable money has been made in Canada by the judicious investment of money in

real estate. Much money will be made in the future in Canadian real estate. Canada has been much discussed. Most people, however, are not familiar with its vastness. Few realize its wonderful achievements or can measure its tremendous possibilities and the whole secret lies in its productiveness. Canadians have something to sell. All this development, however, requires money. This money is chiefly derived in the shape of loans from two sources, viz., the United States and England. More than ever before Canadians now realize their affiliation with relation to the Mother Country and we believe those at home are reciprocating and to the mutual benefit of all concerned, Canada will experience unequalled accomplishments.



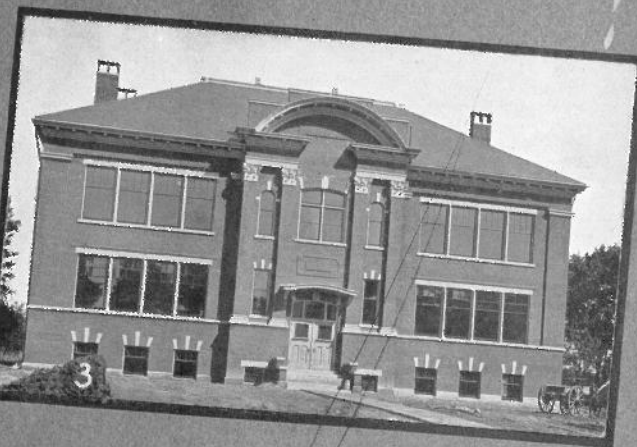
*Busy the year round making Williams' New Scale Pianos*



*Schofield Woollen Mills Co. one of Canada's greatest knitting mills*



## Some Fine Public Buildings of Oshawa



## Why You Should Buy in Ontario—Manufacturing and Industrial Facts

(FRANK YEIGH.)

"Canada's manufacturing exports, 1910-11, \$35,283,118.00, highest on record. Doubled in ten years. Canada has, it is estimated, received \$225,000,000.00 of United States capital in establishing branch factories.

"Canada employed in manufacturing industries—

1900.....	\$446,916,487.00
1905.....	\$846,585,023.00
1912.....	\$1,000,000,000.00

"Annual wages \$250,000,000.00, increase of 33 per cent (estimated) in six years.

"Ontario is advancing in every line of production with **steady** and continuous strides.

"Ontario stands pre-eminent in population, in the solidity of its progress, in railway mileage and water-ways, in electric power, in the variety and magnitude of its natural resources, in **manufacturing**, and in the value of its agricultural products, among Canada's nine provinces.

"Ontario is the backbone of the West. Ontario's manufactures clothe and feed the West."

Ontario produces 40 per cent of Canada's field crops; 75 per cent of Canada's fruit; 75 per cent of Canada's dairy products.

Canada has one-third of area of British Empire.

Canada is as large as 30 United Kingdoms and 18 Germanys; 18 times size of France; 33 of Italy.

Canada is 3,500 miles by 1,400 in area.

Canada makes 300 varieties of manufactures, sustaining two-fifths of population.

Canada has, on the basis of population, as much shipping as Germany.

Ontario is three times as large as the United Kingdom, and larger than France or Germany.

"Canada grows the best wheat in the world; she has the cheapest electric and water powers; she has the milling capacity to grind most of her own wheat in her own mills, and to ship it to the World's markets, with its identity preserved."

"Canada will, in the next decade, double her productive power and railway mileage."—*Sir George Paish, London Statist.*

48 per cent more wheat will be under cultivation in 1915. Think what an impetus this will give to Canada—the entire population will benefit by this enormous increase in the country's revenue.



One of Ontario's largest tanneries—Robson's Leather Co. Limited