


# 2020 ANNUAL REPORT





Visual art is a part of the fabric of communities and drives conversations that shape our values. The role of an artwork reaches far beyond an individual piece—it creates a platform for reflection and innovation.

We believe that art is an essential part of public life, and we share it with passion and purpose. We work to interpret, present, and preserve the artworks in our care and develop programs to help the public connect with the art and its makers.

## Our Mission

The mission of the St. Thomas-Elgin Public Art Centre is to encourage and promote an appreciation for and support the practice of the visual arts in St. Thomas and Elgin County through a variety of exhibitions and educational programs and through the preservation of a permanent collection.

## Our Vision

The St. Thomas-Elgin Public Art Centre is a highly valued and respected art centre that is a focal point for the St. Thomas and Elgin community. The Art Centre is dedicated to fostering a welcoming, enriching and engaging environment of art and creativity, inspire, challenge and educate its audiences.

We gratefully acknowledge the continued support from the City of St. Thomas, the County of Elgin, donors, members and supporters. With your support you provide us with the opportunity to be creative, responsive and entertaining.



ElginCounty  
*Progressive by Nature*





## Board of Directors

PAST PRESIDENT: Tom Hughes  
PRESIDENT: Suzanne Baehr  
VICE PRESIDENT: Bethany Green  
TREASURER: Meghan Vreman  
RECORDING SECRETARY: Laura Woermke

### Directors:

Amy Sloan  
Dang Ho  
Debra Bagshaw  
Grayden Laing  
Neil Hubert  
Joan Dennis  
Todd Noble  
Jim Herbert (City Rep.)  
Alternate Jeff Kohler (City Rep.)  
Dominique Giguere (County Rep.)

## Administration

Laura Woermke, Executive Director / Curator  
Sherri Howard, Program Director

Katelyn Tippin, Reception / Volunteer  
Peri Hayes, Part-time Reception  
Teagan Butler, Part-time Reception  
Beth Green, (Volunteer) Reception  
Amy Sloan, (Volunteer) Reception  
Suzanne Baehr, (Volunteer) Reception

## Committees

### Acquisitions Committee (standing)

Chair Bethany Green  
Kevin Morrell  
Gerald Pedros  
Laura Woermke

### Fundraising Committee (standing)

Bethany Green  
Amy Sloan  
Suzanne Baehr  
Sherri Howard  
Laura Woermke

### Finance Committee

Chair Suzanne Baehr  
Treasurer Meaghan Vreman  
Laura Woermke

## Membership Committee

Chair Neil Herbert  
Laura Woermke  
Deb Bagshaw

## Human Resource Committee

Chair Suzanne Baehr  
Tom Hughes  
Meghan Vreman

## Sponsorship Committee

Laura Woermke  
Suzanne Baehr  
Amy Sloan

## Instructors / Guest Speakers

Heather Keating  
Katelyn Tippin  
Andres Villar (Lecture)  
Olive McEnvue  
Julianne Bryans (Online instructor)  
Ron Milton

Although the past year presented many challenges for all of us, it also provided countless opportunities to be grateful. The generosity, kindness and support received from members, donors, sponsors, artists, neighbours and visitors demonstrated, not only the importance we place on art and creativity, to help inspire and uplift us during difficult times, but the undeniable sense of community that is felt through our involvement and participation.

During a year when we no longer measured success and accomplishments solely on numbers, the number of things to be grateful for has only increased.

## Visitor Statistics



### 2020 Visitor Statistics

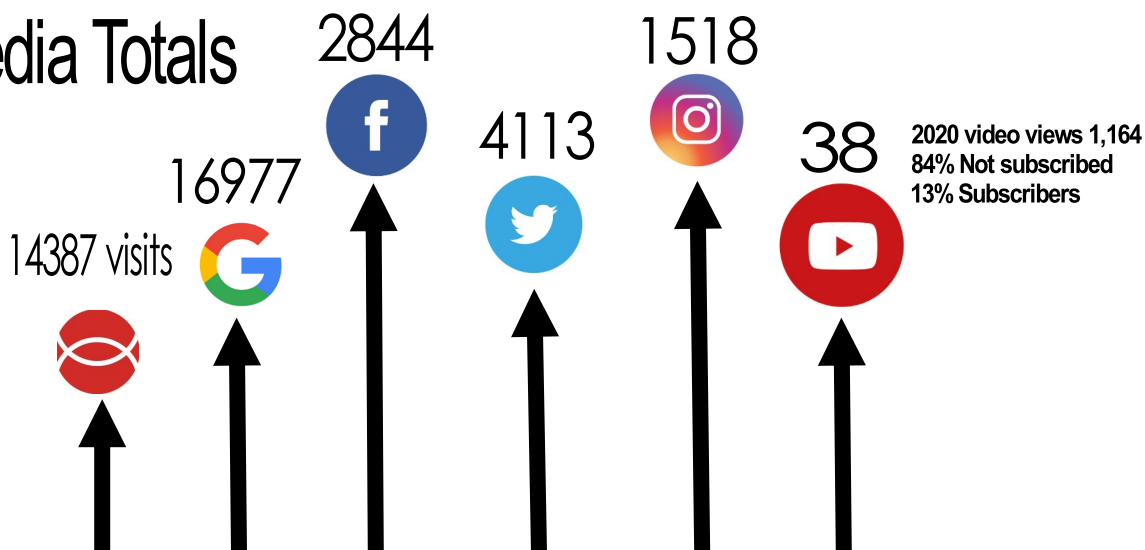
January-March 2020

4371 (Total visitors, tours, classes, special events)

July—December 2020

1132 (Total exhibition visitors) restricted hours and guests

## Social Media Totals





# 2020 Exhibitions

*Artwork detail: Margot Ariss, Untitled, 1969, Relief Clay, 22 x 111/2"*

## **CURRENT Contemporary Selections from the Permanent Collection**

November 9 to February 15, 2020

Visual art is a part of the fabric of communities and drives conversations that shape our values. The role of an artwork reaches far beyond an individual piece - It creates a platform for reflection and innovation.

We believe that contemporary art is an essential part of public life, and we share it with passion and purpose. We work to interpret, present, and preserve the artworks in our care and develop programs to help the public connect with the art and its makers. We invite you to explore the people and artwork that inspire our 50th anniversary contemporary exhibition.

Bringing together art works from the last five decades, by our local and regional artists, *CURRENT, Contemporary Selections from the Permanent Collection*, includes: Ron Kingwood's distinctly impressionistic style depicting wild-life, the organic fibreglass sculptures of Walter Redinger and the regionalist pioneer, Greg Curnoe. Drawn entirely from the permanent collection, the exhibition presents a diverse array of Canadian artists such as: Roly Fenwick, Joespha van den Anker, Clark McDougall, Harry Wilkinson, Bob Bozak, Patrick Landsley, Candy McManiman, Jan Row, Ed Zelenak and Gerald Pedros who define contemporary art in our region.



## **White Walls & Significant Form Small Sculpture from the Permanent Collection**

November 9 to February 15, 2020

The Public Art Centre maintains a permanent collection of artwork ranging from paintings, drawings, prints and photographs. But, the collection also contains a number of mixed media, bronze, cast lead and aluminum sculptures. White Walls: Small Sculpture from the Permanent Collection is an exhibition in celebration of the 50th anniversary and is drawn entirely from the permanent collection.

*Margot Ariss was a Postwar & Contemporary artist who was born in 1929. Her work was featured in several exhibitions at key galleries and museums. The artist died in 2013.*



# Great Beginnings Elementary School Art Exhibition February 25 to March 22, 2020

St. Thomas-Elgin Public Art Centre  
Great Beginnings Elementary School Art Exhibition  
February 25 to March 22, 2020

Join us for the opening reception:

**Saturday, February 29, 2020**  
from 1:00 - 3:00 pm



Throughout its fifty year history, the St. Thomas-Elgin Public Art Centre has taken great pride in exhibiting works created by the many gifted, young artists attending schools in St. Thomas and Elgin County. Thank you for sharing your talent, hard work and boundless imagination with our community!

 Free admission. Refreshments. Everyone welcome!  
**301 Talbot Street St. Thomas**

The front image was created in 1914, by local artist Carolyn Curtis when she was a student at Wellington Street School, age 10.

## Great Beginnings Elementary

February 25 to  
March 22, 2020  
Main Gallery

Every other year the Art Centre hosts an exhibition of works of art created by the many talented young artists attending schools in St. Thomas and Elgin County.

This exhibition allows hundreds of students the opportunity to share their talent and accomplishments with family, friends, teachers and the entire community. It provides a wonderful venue for building self-esteem and acknowledges the importance of art and creativity within our schools.

In 2020 thirteen schools (from St. Thomas and Elgin County) and 325 students took part. The opening for the Great Beginnings Elementary School exhibition saw 672 visitors stop by to celebrate the achievements of these talented young artists!



## Instructors' Exhibition

February 25 to March 22,  
2020  
Gallery Three

Children's art education is fundamental to what the Public Art Centre offers our community. Our instructors are as idiosyncratic as the classes and workshops they teach, but there are certain basic philosophies that they all share.

They are knowledgeable, but equally excited about discovering something new with a child. They create safe, freeing environments where children can find their own unique, creative voice. They are passionate about: learning, imagination, processes and creating, and they are all eager to offer children an opportunity for transcendent fun.

This exhibition features works created by some of the dedicated instructors who have developed and implemented our: weekend art classes, summer programs and P.A. day and March Break workshops.





# Great Beginnings

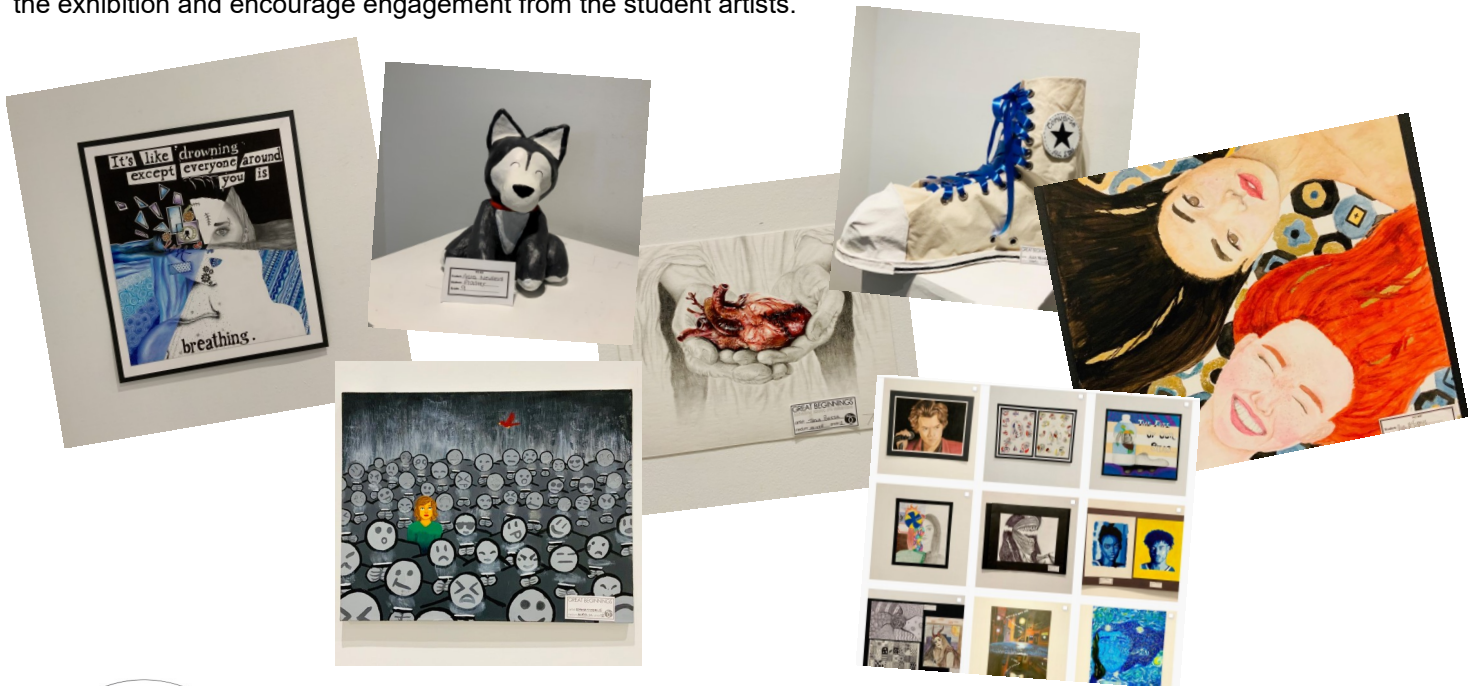
## Secondary School Art Exhibition

### Twenty-Twenty



#### Great Beginnings Secondary (online)

The shut-down in March, brought in person viewing to an abrupt end, but having received the secondary school art before March Break, the Art Centre was determined to share it. Throughout the months of March and April, the Art Centre presented the Great Beginnings Secondary School Exhibition to our community through social media (Instagram and Facebook) daily posts featured the work of all five participating schools with each school getting approximately one week. The response to the posts was very positive and the department heads from a couple schools did so much to help us promote the exhibition and encourage engagement from the student artists.



#### COVID-19

From March 17 to July 2, the Public art Centre was not open to the public. On site exhibitions for the public were put on hold and the scheduled 2020 exhibitions were re-negotiated with the artists for 2021 and beyond. We are looking forward to working with these artists in the future.





Artwork detail: Norval Morrisseau, *Fish Clan*, Acrylic on canvas Gift of John DePutter



## Selections: from the Permanent Collection

July 2 to August 8, 2020  
Main Gallery

As we eased into the reopening phase, our exhibition, *Selections, from the Permanent Collection* highlighted some of our favourite works of art from the collection. This exhibition also utilized QR codes as a personal tour guide through the artwork on display. Not only were the visitors able to scan the labels to view more online content but were prompted with discussion starters with our extended labels. Just imagine looking at an artwork by Clark McDougal and listening to him speak about it in the virtual world.



Selections Summer Exhibition from the Collection on YouTube

Online Virtual Tour with our Program Director, Sherri Howard.



## Heather Keating: Presence of Light

July 2 to August 8, 2020  
Gallery Three

"My artwork is a fusion of realism and impressionism. I attempt to create paintings that show a strong sense of light, vivid colour, fluid brushwork and deep emotional content. I strive to evoke in my viewers the same emotions that compelled me to paint the subject" - Heather Keating

This exhibition gave us an opportunity to create our first virtual tour and viewing room and it can be found on YouTube STEPACdotca

Norval Morrisseau, CM, also known as Copper Thunderbird, was an Indigenous Canadian artist from the Bingwi Neyaashi Anishinaabek First Nation.



# UNMASKED

## PORTRAITS FROM THE COLLECTION

Artwork detail: Robert Reginald Whale, *Portrait of Cousin Patience*, Oil on canvas, 1830, 35x26cm

### UNMASKED: Portraits from the Collection

August 15 to September 26, 2020  
Main Gallery

Drawing from a collection of over 1900 works of art, *UNMASKED: Portraits from the Public Art Centre's Collection*, features portrait works that explore how artists have chosen to portray themselves and their subjects. Created in all media, from plaster sculpture to oil painting, the works in this exhibition can inspire ourselves to see others with empathy and understanding.

As we are confronted each day with mandatory mask regulations and social distancing rules many find it difficult to connect with others. So, we think this is an opportune time to reassess the significance of self-portraiture and portrait art in relation to our current time in history.

The exhibition contains examples of self-portraits, with Dorothy Stevens', *Untitled Self Portrait*, c. 1940, that is rarely seen. It also includes works by Mackie Cryderman, Clark McDougall, Bob Bozak, Marion Long, Greg Curnoe, Kathleen Daly, Robert Reginald Whale, Norval Morrisseau and many more.

UNMASKED is curated by Laura Woermke, Curator and Sherri Howard, Program Director at the Public Art Centre. The exhibition will also include self-directed educational

prompts to further develop your experience and exploration into the world of portraits.

To learn more please follow us on Facebook, Instagram, Twitter and YouTube



Virtual Tour and a brief history of portraits with our Program Director, Sherri Howard.

*Robert Reginald Whale was born in Altarnun, Cornwall in 1805.<sup>[1]</sup> In 1852, Whale and his family emigrated to Canada, settling near Brantford, Ontario in Burford.<sup>[2][3]</sup> Whale was a prolific painter, supporting himself and his family through the sale of his artwork—a challenging task in that time and place.<sup>[4]</sup> He exhibited with the Ontario Society of Artists and with the Royal Canadian Academy of Arts beginning in 1881.<sup>[2][5]</sup> Whale died in Brantford on 2 July 1887*





Artwork detail: Jean-Paul Riopelle, *Jute II*, 1967, lithograph on paper

## Preservation : Caring for a Collection

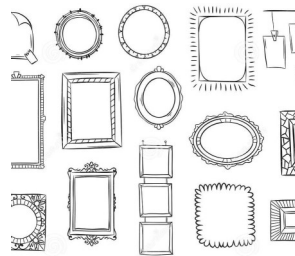
Recent Acquisitions  
November 21 to December 19, 2020  
Main Gallery

In over 50 years of its existence the St. Thomas-Elgin Public art Centre has amassed one of the most significant collections of local and regional artworks of paintings, sculptures, prints, drawings, and photographs. From the beginning with the purchase of Clark McDougall's, *Talbot Street 1964*, the collection has grown to more than 2000 works today.

During the lockdown brought on by the pandemic, the duty to protect our important collection has occurred behind the scenes. These works are vulnerable to pests, changes in temperature and exposure to light all of which demands constant vigilance. This preservation has been happening in large and small galleries and museums all around the world, in our own community and at the Public Art Centre.

Part of our commitment to preserving a community collection, *Preservation : Caring for a Collection, Recent Acquisitions*, will feature new works of art included in the permanent collection from 2019-20. The art works, all of which are donations, accentuate the continued importance of collecting and preservation, in the development of the permanent collection.

We are looking forward to seeing you again at the Public Art Centre and we encourage you to visit all our local museums and cherish every moment of the dedication of our cultural workers.



## Miniature Show and Sale

November 14 to December 19, 2020  
Gallery Three

A miniature show and sale provides a perfect opportunity for artists and the community! Many people don't always have the ability or space, to acquire or collect large, more expensive pieces of art from their favourite or new, favourite artist. This show and sale is a really easy, fun way to do both. Whether you're starting or adding to a collection or purchasing a one-of-a-kind gift for someone on your list this upcoming holiday season, this show has you covered.

*Jean-Paul Riopelle, CC GOQ RCA was a painter and sculptor from Quebec, Canada. He had one of the longest and most important international careers of the sixteen signatories of the Refus Global, the 1948 manifesto that announced the Quebecois artistic community's refusal of clericalism and provincialism.*



# Online Exhibitions

Artwork Detail: Marcel Bellerive *Sac et ficelle*, 1989 serigraph



## Tell Me Something... Selections from the Permanent Collection

Artists choose landscapes as their subjects for many reasons. Their desire to represent its understandable splendor, some artists choose to study and explore various appealing elements, like light, color, and texture and other use the landscape to tell a story, a narrative, to illustrate an idea or conceptualize a metaphor. The permanent collection holds many wonderful examples of historic and realistic depictions of landscape paintings, but let's take a closer look at those who push past the traditional depictions and use text as an element.

The following artworks were selected because the artist not only depicts the idea of the landscape but uses text. Although text is all around us, on magazine covers, cereal boxes, street signs and billboards, we rarely think of it as an element of art. Yet each letter can have shape and colour and, if the words were void of meaning, would be ideal for creating abstract work. The addition of meaning adds another level of depth to using text as an element that can not be created by shape and color alone.

The following artworks were selected because the artist not only depicts the idea of the landscape but uses text. Although text is all around us, on magazine covers, cereal boxes, street signs and billboards, we rarely think of it as an element of art. Yet each letter can have shape and colour and, if the words were void of meaning, would be ideal for creating abstract work. The addition of meaning adds another level of depth to using text as an element that can not be created by shape and color alone.

*Marcel Bellerive (1935-2004) joined the movement of gestural abstraction, approaching painting, engraving, drawing and sculpture. The first period of his production, marked by abstraction, is followed by a figurative period, with the use of series of everyday objects of consumption. His works have been exhibited in several museums and galleries and are part of several permanent collections, including those of Loto-Québec and the Musée d'art contemporain de Montréal.*



## Stanley Lewis "CITY" Selections from the Permanent Collection

Stanley Lewis, sculptor, print maker, teacher and photographer passed away in Montreal on August 14th, 2006, at the Jewish General Hospital, at the age of 76. He created sculptures until a few months before his death. Mr. Lewis was regarded by many as a national treasure in the contemporary art world. During his

56-year international career he created "poetry in stone," and his prolific body of work is an enormous contribution to art and Canadian culture. As a teacher and mentor, his generosity, energetic personality and wealth of knowledge inspired several generations of artists.

Since humans first illuminated bands of rain and lightning on the inner walls of their cave homes, artists have been absorbed with illustrating our physical environment. Yet, for centuries, the environment's form in art was meant to be read either as wonder for our natural world, or as a background subject for the documentation of human stories. In the 20<sup>th</sup> century, together with rising global concerns surrounding the state of the earth's health, and our impact as humans upon it, many artists use this concern to create images that will draw attention to the ecological issues and will as our relationship and contribution to them. Stanley Lewis was one such artists, with his simple depictions of humans and environment produced with limited colours and forms. This straightforward technique allows for the simple message to be delivered to the viewer.





## Say Cheese Portfolio Selections from the Permanent Collection

When Alan and Hilary Alderson opened Say Cheese in 1969 it was one of a kind; it was the first and only spe-

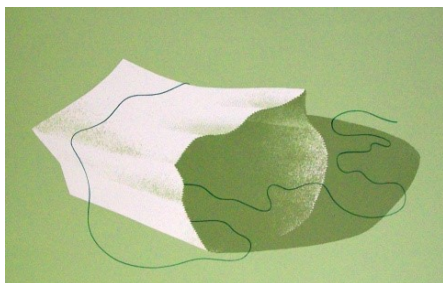
cialty cheese boutique and restaurant in London, a status it would enjoy until its closure in 1994. Originally located on Talbot St. across from the Covent Market (where the John Labatt Centre now stands), Say Cheese was one of the few businesses on the block at that time. Instead of thriving businesses, the Talbot Block had been populated by a large number of London artists who had established studios and galleries in the cheaply rented spaces. Say Cheese was situated in close proximity to The Alpha Centre, The Trajectory Gallery and the studios of many young artists, and as such, it was in the heart of London's artistic community. It follows that Say Cheese was more than just a cheese shop and a place to eat; it was also a central meeting place for local artists. From the start the Aldersons were supporters of local artists, exhibiting their work and even, at times, allowing the exchange of art for food; not for charitable reasons, but as a mutually beneficial business practice. (art.wav) These works were produced by the local artists.

In World War II, Tingley was the official cartoonist for the Canadian Army magazine, *Khaki*, and a contributor for the overseas army newspaper, *The Maple Leaf*. After his discharge, Tingley toured the country on his motorcycle hoping to find work as a cartoonist only to have the various newspapers applied at turn him down. When Tingley reached London, Ontario, he was out of funds and had to gain a menial job at the London Free Press with a friend's help. However, Tingley's fortunes improved when an editor on that paper noticed a cartoon Tingley drew of the mayor during the municipal election. The editor was impressed enough with that work to arrange to have Tingley become the resident editorial cartoonist.

Tingley's mascot was a worm character called Luke Worm who usually was present in each of his cartoons.

Tingley's honours include the National Newspaper Award for editorial cartooning in 1955, National Headliner Award for Editorial Cartoon year for 1965 and induction into the Canadian Cartoonist Hall of Fame in 2015. In addition, collections of his work are stored at the University of Western Ontario, the St. Thomas-Elgin Public Art Centre and at Library and Archives Canada in Ottawa.

After his retirement in 1986, his artistic contributions have been commemorated since 2014 in the Ting Comic And Graphic Arts Festival in London, Ontario. It is an annual three-week arts festival at The TAP Centre for Creativity devoted to cartooning and sequential art which includes gallery displays of various local Canadian artists including selections of Tingley's art, as well as various activities devoted to the medium and is scheduled to conclude with the annual Free Comic Book Day event.



## Isolation as Inspiration Selection from the Permanent Collection

While we are experiencing a time of social distancing or self-isolation, it is typical-

ly the destiny of the artist to work alone. The themes of loneliness, isolation and estrangement frequently arise in their artwork providing us with an opportunity to contemplate and interpret and with complete understanding. The Following selections are some examples from the permanent collection that we think perfectly express solitude, and isolation.

Enjoy our online exhibitions and new artists biographies, online publications, and resources, and don't forget to follow us on Instagram, Twitter and Facebook and subscribe on YouTube.



## Merle "Ting" Tingley Editorial Cartoons Selections from the Permanent Collection

Merle "Ting" Tingley (1922-2017) was a Canadian Cartoonist

who was the main editorial cartoonist for the London Free Press (Ontario), from 1948 to 1986 as well as being syndicated for 60 other publications as well.

# Creating experiences for people where art is discovered, encouraged, enjoyed and valued.



# School Programs



The Art Centre offers curriculum based tours and hands-on art activities **free of charge** to the schools in our community. We continue to update our programs to better reflect the Ontario Arts Curriculum, incorporating aspects of both the creative process and the critical analysis process, as well as offering students a more active,

participatory experience.

Students encounter original artworks with a tour led by our Program Director, Sherri Howard that complement and enhance classroom learning and are based on the Ontario Curriculum. They take time to look carefully, ask questions, and develop their own interpretations. Through open-ended discussion, students discover that art can possess multiple layers of meaning. Their shared endeavor - in which all voices are valued - becomes a powerful learning experience that will be memorable and meaningful.

**Kindergarten to Grade 6** Students taking part in tours at these grade levels will play an active role in learning about the choices an artist makes when creating art. They will be encouraged to generate questions, ideas and opinions about the exhibitions and the importance of art in expressing ideas and feelings. Special attention will be given to

the use of the elements and principles of art both in the work of professional artists and the work that they create. In the hands-on section students will create work, appropriate to each grade level, that emphasizes both the elements and principles of art.

**Grade 7 & 8** Tours at the grade 7/8 level place a strong emphasis on the use of the elements and principles of art and recognizing how an artist has used these to create a successful composition. Using this information students will complete an art critique based on the exhibition. In the hands-on section students will look at examples from, and create art inspired by an artist from the Art Centre's permanent collection.

Tours are approximately 1½ to 2 hours in length (depending on grade level) and the Art Centre can accommodate 50-55 students/tour.





# Classes, Workshops & Public Programs

## Children / Adult / Seniors

### ELEMENTARY EXPRESSIONS

February 1 to March 14, 2020  
Saturdays 9:00 - 10:30

Instructor: Katelyn Tippin



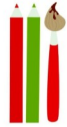
Grades: JK-4  
Cost: \$60.00

This series of classes is great for the young budding artist. It builds on existing skills and challenges students to explore new media, techniques and approaches to art.

### DRAWING & PAINTING

February 1 to 22, 2020  
Saturdays 11:00 - 12:30

Instructor: Katelyn Tippin



Grades: 4-8  
Cost: \$50.00

For the student who loves to draw and paint this series of classes offers the opportunity to explore both in more depth and really begin to hone their skills.

### PA DAY WORKSHOP

January 24, 2020  
9:00 am - 3:30 pm

Grades: JK-6  
Cost: \$35.00



Our PA Day Workshops are an enjoyable, creative way to spend the day, offering students a variety of art and craft projects presented in a fun, energetic setting.

### PA DAY WORKSHOP

March 6, 2020  
9:00 am - 3:30 pm



Grades: JK-6  
Cost: \$35.00



### Art as an Investment

#### Ellen Luft Moira McKee

Certified Financial Planner  
Investment Advisor

Canadian Personal Property Appraiser  
(CPPA)

March 1, 2020 1:00 - 2:30 pm  
admission is free. everyone is welcome.

Many of us have personal art collections that we assemble over a lifetime and whether your collection has been decades in the making or consists of one or two pieces, these works bring exquisiteness, inspiration and character to our daily lives. Additionally, art can be a worthwhile and significant investment.

During this time of year when many of us are thinking about: finances, investments and taxes, the Public Art Centre would like to offer some insights and clarification about: the implications of owning art, the benefits of art donations, collecting, appraising and bequeathing art. Join Ellen Luft, of Hollis Wealth and Moira McKee of Excavo Art Appraisal and Consultancy for a dynamic discussion followed by a question and answer period...there will be refreshments too.

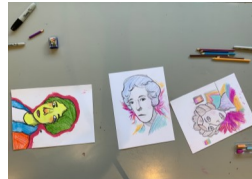


For the past couple years Central Community Health Centre has run their Winter Blues program here at the Art Centre. Their organization no longer had the staff or funding for the program so the Art Centre has agreed to take on this program so that it can continue being offered in our community. Winter Blues is offered as a preventative program designed to encourage people to get out and socialize during the winter months, to beat the winter blues.

**WATERCOLOUR**  
 February 6 to March 12, 2020  
 Thursdays 7:00-9:00 pm  
 Instructor: Heather Keating  
 Cost: \$70  
 (plus supplies)  
 This class is suitable for all skill levels including beginner.

St. Thomas-Elgin Public Art Centre  
**Drypoint Printing**  
 Thursday, January 23 & 30, 2020  
 7:00-9:00 pm  
 Instructor: Ron Milton  
 \$50/person includes all materials  
 This class is suitable for all levels including beginner.  
 Drypoint is a printmaking technique of the intaglio family, in which an image is incised into a plate with a hard-pointed "needle" of sharp metal.

Adult classes at the Public Art Centre vary in theme throughout the year. These classes are suitable for all skill levels including beginner. These classes and workshops also offer a unique, creative environment to learn, socialize and share with others.



## The YouTube Crew

At the Public Art Centre we love to have our classroom studio filled with students, creating art and using their imagination and talents. This year we are so grateful to this small, but mighty group, who spent hours with, up in the studio allowing their talents, creativity and hands to star in the education content we were able to share on YouTube.

**Art is something to share.  
 It builds connections  
 to friends, family & community**

## FAMILY DAY OPEN HOUSE

**Monday, February 17th**

art activities, prizes, games & more!

drop by between 11:00 am and 2:00 pm

Grades JK to 6 (accompanied by an adult)



Free admission. Refreshments. Everyone welcome.

Participants in our Family Day Open House enjoyed an exhibition-based scavenger hunt, hands-on activities focused on the elements and principle of art, Bingo games and of course snacks! This type of free community event yields so many benefits for the Public Art Centre. For some it's the first time they are visiting us, for others it is an annual event their families look forward to each year. One thing is clear, this is a big target audience for what we do at the Public Art Centre and the return on this kind of investment is huge!

## ART HISTORY TALK with Andrés Villar



1:00-2:30 pm

Sunday, February 2, 2020

Refreshments. Everyone welcome.

Over the past several years artist and art educator Andrés Villar has presented a wide range of art topics and discussions to the public through the *Art History Talks* presented by the Public Art Centre. In 2020 the focus of the talk turned to the artists featured and the almost 80 works that comprise, *Current - Contemporary Selections from the Permanent Collection*.

This exhibition and the talk were the concluding event that wrapped up the 50th Anniversary celebration at the Public Art Centre. These talks were offered free of charge to the public and drew a large crowd, from all sectors of our community and the surrounding area.

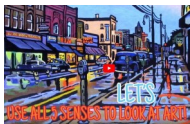


# Online resources for Students/Teachers

stepac.ca

Now more than ever, art can help lift our spirits and support our well-being. Stay connected with the Public Art Centre at home with our online activities, exhibitions and explore your local artists.

## Educational Resources



### Looking at art with all 5 senses

Art has the ability to engage all of your senses just by looking at it. This is a technique the St. Thomas-Elgin Public Art Centre uses when giving tours to a younger audience, but it's fun for anyone to try!



### Clark McDougall "The Relentless Pursuit"

Take some time and explore the artworks of Clark McDougall. Narrated by Clark McDougall.

## Art Activities



### Paper Crafts Part 1 Flower Bouquet

Folding, cutting, gluing or a combination of all three, paper crafts are a fun way to get creative!



### Paper Crafts Part 2 Wiggly Fish

Paper crafts are fun to make and a great way to be creative! Follow along with the video then decorate your fish and make

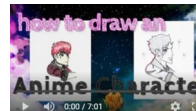
the design your own.



### How to Draw A Portrait

In this video we will be breaking down how to draw a portrait step-by-step, with Julianne, Clover, and Billie. We have referenced a portrait of Lila Knowles done by

Farquhar McGillvary



Knowles.

### How to Draw an Anime Character

In this video, Billie and Julianne will be drawing their own unique anime characters based off the works of Clark McDougall and his painting of George Thorman.



### How to Draw A Superhero - Batman

In this video, Billie and Julianne will be drawing Batman. The reference they used to draw the superhero in this video is a self portrait by Harry Wilkinson.



### How to Draw a Superhero Inspired Character

In this video, Billie and Julianne's artwork is directly inspired by the piece "80 years" by the artist Marion Long. They have a heroic take on the piece, and design it into their own character!

### How to Draw a Zombie Creation

In this SPOOKY video, Billie and Julianne will be creating a zombie masterpiece by referencing the artworks St. Mark's Church by Carolyn Curtis and Nostalgia by Stanley



We would like to acknowledge the support of the Emergency Community Support Fund within Elgin-St. Thomas Community Foundation supported by the Government of Canada. A very big THANK YOU to our members, donors and sponsors who know the value in art education and support everyday!



## Art Activities



### Make A Mini Sketchbook

This how to gives you the step-by-step for making a mini sketch book. It also has ideas for turning your mini sketch book into an Instagram album and two sizes of mini notebooks. These mini books make great gifts during the holidays or anytime of year! Fun to give. Fun to get. Fun to make.

## Downloads



### Clark McDougall Colouring pages...

Clark McDougall (1921-1980) was a St. Thomas, Ontario artist whose work reached critical acclaim before his untimely death in 1980. Survey exhibitions of this artist from St. Thomas were presented at the McIntosh Gallery, the University of Western Ontario in 2011, the St. Thomas-Elgin Public Art Centre and at The Elgin County Museum, St. Thomas. Clark McDougall's paintings are highly regional in content with a strong emphasis in recording rural landscapes and the world around him. Clark McDougall's works are in numerous public collections in Canada. The St. Thomas-Elgin Public Art Centre has the largest collection of Clark's artwork. We care for over 430 drawings and paintings by Clark McDougall. In 2017, we featured many unseen works from the generous donation from the McDougall Group, in the exhibition, "the Relentless Pursuit...". The following colouring sheets were produced as a colouring book to raise funds to care for the works in the permanent collection.

## Online Publications

The Public Art Centre has made a number of publications available online.



### enduring women veils of secrecy

Gerald Pedros / Sylvia Curtis Norcross

Exhibition: 2005

Director's Statement Public art galleries have a responsibility to present exhibitions that delight and inspire the viewer,

and exhibitions that challenge the viewer to disrupt their comfort, to question and re-evaluate their assumptions. Some exhibitions can be appreciated on a purely visual level, where others force a sense of self-awareness or community consciousness. Enduring Women: Veils of Secrecy is an example of the latter. Violence against anyone, whether it be a woman, man or child, is a troubling thought. What is worse is the reality of the statistics.



### Walter Redinger Apparition 2007

CASO St. Thomas, ON

Foreword

Walter Redinger is in a place that seems ever so slightly beyond a normal existence. He lives in a place that is abundantly spir-

itual yet grounded in earthly affects.



## Foundations: Celebrating 50 Years!

Visual art is a part of the fabric of communities and drives conversations that shape our values. The role of an artwork reaches far beyond an individual piece—it creates a platform for reflection and innovation.

We believe that art is an essential part of public life, and we share it with passion and purpose. We work to interpret, present, and preserve the artworks in our care and develop programs to help the public connect with the art and its makers. We invite you to explore the people and artwork that inspire our 50th anniversary publication.

## Gift Shop Store (Online)

The Public Art Centre Store is a local treasure. Re branded as "The Last Stop", in July, the gift shop is home to many local artists, authors and artisans. The Last Stop, has a wide-ranging, uniquely Canadian selection of contemporary art books, posters, jewellery and designer giftware, including a broad range of Groups of Seven merchandise, making it a truly satisfying shopping experience. All proceeds from shop sales support the programs of the Public Art Centre.

Provided online and supporting The Last Stop Gift Shop, over 40 local artist biographies are available for more information to the visitor.

## Artist Profiles Online

Our role at the Public Art Centre is to promote the appreciation of the visual arts and support the practice of artists in St. Thomas and Elgin County. We have compiled a list of over 40 of our local and regional artists that contributed and defined our visual heritage. These biographies are available online.



### Catherine Craig

Located in Elgin County's northeast is the small, scenic town of Belmont, home to Catherine Craig's rustic working studio filled with her original clay artwork, sketches and sculptures. A professional visual artist with more than 40 years experience, she values community empowerment and storytelling - the hallmarks of her work. Catherine is a partner in the Art Gallery of Lambeth and has exhibited in many galleries across Southern Ontario in both group and solo exhibitions. A graduate of the University of Windsor's Bachelor of Fine Arts program, she has also offered private lessons to aspiring Arts, Entertainment and Recreation for more than 30 years. Catherine's work transcends craft and hobby; it is a lifetime commitment fueled by passion and dedication.

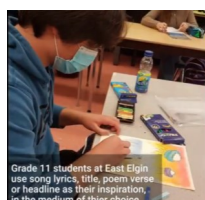


**Pat Curtis** a long-standing member of the Port Stanley Artist Guild and Portside Gallery. She known for her wide-ranging styles and mediums. Her jewellery pieces mimic playfulness with her use of natural materials.

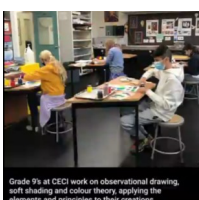
*We would like to acknowledge the support of the Emergency Community Support Fund within Elgin-St. Thomas Community Foundation supported by the Government of Canada. A very big THANK YOU to our members, donors and sponsors who know the value in art education and support every day!*



# Special Programs / Partnerships



Grade 11 students at East Elgin use song lyrics, title, poem verse or headline as their inspiration, in the medium of their choice.



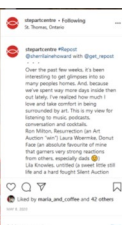
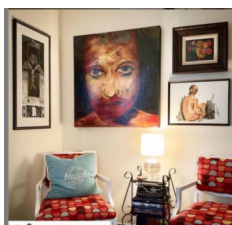
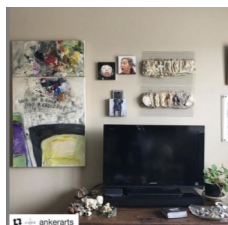
Grade 9s at CECI work on observational drawing, soft shading and colour theory, applying the elements and principles to their creations.

**In Studio - A partnership with Secondary Schools**  
If you're looking for some creative inspiration, check-out what's been going on in high school art studios across St. Thomas-Elgin!

@ceci\_visual\_art Central Elgin Colligate Institute  
@eastelginart East Elgin Secondary School  
@pciart @pciartshm Parkside Colligate Institute  
@sjhs\_arts St. Joseph Highschool

## Violence Against Women Services Elgin

In April, a donation of art supplies was made to the local Women's Shelter. The sketchbooks, pencils, sharpeners and markers had been purchased for the March Break lessons that didn't take place. In hearing and reading about the additional struggles some women and children are facing during this time, it seemed appropriate to reach out and help in this small way. The Art Centre was then asked to put together a few lessons/activities for the children (ages 2- preteen) to take part in. Four lessons were developed and we were excited to get them to the shelter. The Art Centre has always taken such pride in offering free art activities to children in our community and we are glad to continue to fulfil this need.



## #INSIDELookINGIN

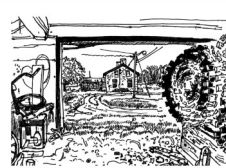
"Over the first emergency lockdown, it's been interesting to get glimpses into so many people's homes. And, because we've spent way more days inside then out lately, I've realized how much I love and take comfort in being surrounded by art. This is my view for listening to music, podcasts, conversation and cocktails.

Ron Milton, Resurrection (an Art Auction "win") Laura Woermke, Donut Face (an absolute favourite of mine that garners very strong reactions from others, especially dads) Lila Knowles, untitled (a sweet little still life and a hard-fought Silent Auction "win") Evelyn Knight, untitled (painted during a life drawing class in the Art Centre's studio)

All of these are directly connected to the St. Thomas-Elgin Public Art Centre and each is part of the vibrant local art scene that has existed in St. Thomas for decades.

I look forward to its return, but until then..." Sherri Howard

#insideloookingin @stepartcentre #artmatters #communityartcentre #shareyourview



## Inn Out of the Cold

During March and April the St. Thomas-Elgin Public Art Centre provided single person activities to the Inn Out of the Cold drop in center located on Talbot Street. The activities included activity sheets and colouring pages based on the permanent collection.

**Augmented Reality** The Public Art Centre is please to support the Elgin County Museum "Augmented Reality" project. This project is funded by the Estate of Donna Vera Evans Bushell. This contribution will transform how the Museum connects with the community and presents local history and culture to visitors. The Museum will support the introduction of a new augmented reality app for St. Thomas and Port Stanley, add murals and historical signs along cycling trails across Elgin County,



## ART TREE & TRAILS

The St. Thomas-Elgin Public Art Centre is pleased to announce that we will be coordinating the new "Art, Trees & Trails" project, a community-wide collaboration with partners including the Kettle Creek Conservation Authority, Catfish Creek Conservation Authority, and St. Thomas Elevated

Park. This project will bring historic and contemporary artwork from the Art Centre permanent collection to our beautiful local trails and Elevated Park through the installation of attractive signs that feature high quality reproductions of many of our landmark paintings. The "Art, Trees & Trails" project has been generously funded with \$115,000 by the Estate of Donna Vera Evans Bushell.

Art has an incredible ability to unify. Supporting the mission of the Public Art Centre, especially "encouraging the appreciation for and supporting the practice of the visual arts in St. Thomas and Elgin County", the "Art, Trees & Trails" project will allow us to engage with the community outside the walls of the Public Art Centre, promote art education, and add to our visual environment in places where community members and visitors explore nature. Signs will be installed along the trails at Springwater Forest, Dalewood Conservation Area, and St. Thomas Elevated Park. In each case, the artwork selected will correspond to the precise physical location.

The following are a few examples:



Artist: Clark McDougall, *Above the Lookout Reservoir*, 1958, Oil on panel



Artist: Clark McDougall, *Kettle Creek Valley, North Yarmouth*, 1958, Oil on panel



Artist: Clark McDougall, *Dan Patterson's Landing*, 1963, Oil on panel



Artist: Clark McDougall, *Portrait of George Thorman*, 1953, Oil on panel



Artist: Clark McDougall, *St. James Church*, 1974, Serigraph



## VOLUNTEERS 2020

Volunteers are the most important resource St. Thomas-Elgin Public Art Centre has. The ability of people to work willingly together for the betterment of their community and themselves is a valuable resource.

The image of the volunteer has changed over time. Now volunteers come from all walks of life. Our volunteers range from students participating in free public programming, retired teachers (greeters for special events and reception), educators (researching and archiving) and artists (sharing their individual artistic techniques in workshops and classes).

- Family Day
- 2020 Arts Crawl
- Art as Investment Talk
- Whisky Bar & Art Lounge
- Pa Day
- March Break
- Reception
- Sealed Bid Auction
- Membership Committee
- Acquisition Committee

# 39 Individuals

# 362 Hours volunteered



Ava C  
Darien  
Isabel A  
Wilma P  
Andrew H  
Dany M  
Hailey P  
Jeevan  
Lily W  
Clover H  
Nirmal  
Wendy Tippin  
Yen Ho  
Mike Pineau  
Ruth Wallace  
Bethany Green  
Darlene Loyst  
Catherine Craig

Suzanne Baehr  
Elizabeth Bourque  
Laura Hayho  
Neil Hubert  
Deb Bagshaw  
Gerald Pedros  
Sarah Abbott  
Jim Coburn  
Matthew Coburn  
Dang Ho  
Board of Directors



IT'S TIME TO APPLAUD  
CANADA'S VOLUNTEERS  
NATIONAL VOLUNTEER WEEK 2020  
APRIL 19-25  
VOLUNTEER.CA | #NVW2020

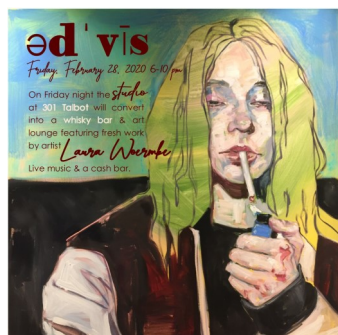




# Fundraising / Special Events



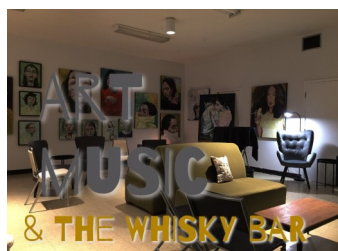
The Arts Crawl is a FREE winter event celebrating local arts and culture. Set in various venues throughout St. Thomas Ontario, participants are given a passport to guide them to the sites and help them explore.



The Arts Crawl focus in the main gallery space in 2020 was art education. The biennial **Great Beginnings Elementary School Exhibition** opened Saturday, February 29th and featured the artwork of 100's of talented young artist attending schools in St. Thomas-Elgin.

Gallery III featured **#arteducationmatters**, an exhibition comprised of work created by past and present children's art instructors.

On the Friday night of the Arts Crawl, the Public Art Centre's studio was converted into a whisky bar and art lounge feature the exhibition **Ed'vīs** by artist Laura Woermke. The event also featured live local music throughout the evening and yes, a whiskey bar.



Visit us on YouTube for the highlights of this great event!

Throughout the months of July, August and September, the Public Art Centre hosted an Art Sale in Gallery Three, in our ongoing efforts to raise funds while at the same time supporting the practice of and encouraging an appreciation for the visual arts. Thank you to the people who have donated artworks for the purpose of raising operational

funds for the Public Art Centre and to the many patrons who purchased artworks, old and new through the Art Sale

The first ever Sealed Bid Art Auction presented a wonderful opportunity for viewers to enjoy an impressive exhibition, add to their personal art collections and raise money for the Public Art Centre. This year's auction did not feature an in-person "event" but the combination of in-person and on-line bids resulted in a very successful fund-raiser.





# 2020 Acquisitions

MARC-AURÈLE DE FOY SUZOR-CÔTÉ (1869-1937) R.C.A.  
L'INDIENNE (detail)

Our collecting activity for 2020 was focused on increasing the number of works in the collection by local female artists, exhibiting artists and artists representing French Canadians. We are pleased to announce the recent inclusion of Heather Keating (St. Thomas, Robin Baratta (Belmont) and Donna Andreychuk (Delaware). Other gifts to the Public Art Centre's collection, three miniature works by local artist Clark McDougall.

Jeanine Leroux-Guillaume (1927-2018)  
*Poèmes*  
Etching and intaglio prints  
38,0 cm x 28,0 cm  
1987

Jeanine Leroux-Guillaume (1927-2018)  
Les brûlis Art book  
8 original woodcut prints  
29,0 cm x 19,5 cm  
1983

Jeanine Leroux-Guillaume (1927-2018)  
Rouge de Nuit  
Woodcut  
37x46cm  
1965

Jeanine Leroux-Guillaume (1927-2018)  
Les Liens De L'Adversite  
Etching-Aquatint  
Etching  
45.5x61cm  
1984

Jeanine Leroux-Guillaume (1927-2018)  
Boise De Sanguine  
Woodcut  
46x31cm  
1966

ALBERT DUMOUCHEL (1916 – 1971)  
Route Au Tyrol  
Etching  
48.5x30cm  
1960

ALBERT DUMOUCHEL (1916 – 1971)  
Africa Terre  
Vent Aavril  
Woodcut  
49x32.5cm  
1990

MARCEL BELLERIVE R.C.A. - (1934-2004)  
Barbe Rousse  
Serigraph  
51x66cm  
1979

MARCEL BELLERIVE R.C.A. - (1934-2004)  
Barbe Grise  
Serigraph  
51x66cm  
1979

MARCEL BELLERIVE R.C.A. - (1934-2004)  
Cosmos I  
Serigraph  
29,0 x 15,5  
1975

MARCEL BELLERIVE R.C.A. - (1934-2004)  
Cosmos II  
Serigraph  
29,0 x 15,5  
1975

MARCEL BELLERIVE R.C.A. - (1934-2004)  
Pins du Québec  
Serigraph  
19,0 x 14,5  
1972

MARCEL BELLERIVE R.C.A. - (1934-2004)  
Cosmos-forme  
Serigraph  
19,5 x 28,0  
1975

MARCEL BELLERIVE R.C.A. - (1934-2004)  
Étagements  
Serigraph  
33,5 x 25,5  
2001

MARCEL BELLERIVE R.C.A. - (1934-2004)  
Vermillon  
Serigraph  
35,5 x 20,0  
1990

MARCEL BELLERIVE R.C.A. - (1934-2004)  
Termitière  
Serigraph  
39,0 x 18,0  
1988

MARCEL BELLERIVE R.C.A. - (1934-2004)  
Gris fer  
Serigraph  
39,0 x 17,5  
1988

MARCEL BELLERIVE R.C.A. - (1934-2004)  
Fenêtres lumineuses  
Serigraph  
39,0 x 17,5  
1983



MARCEL BELLERIVE R.C.A. - (1934-2004) Volets rouges Serigraph 40,5 x 14,5 1983	Louis-Pierre BOUGIE(1946- ) Composition Etching 107x71cm 1989	CHARLES DAUDELIN (1920-2001) R.C.A. Migration Lithograph ÉÉ 2/4 43,5 cm x 70,0 cm 1975
MARCEL BELLERIVE R.C.A. - (1934-2004) Au fil du bois Serigraph 41,0 x 14,5 1977	Louis-Pierre BOUGIE(1946- ) Art book: Le prince sans rire, containing 13 original etchings 13 original etchings 10/30 59,0 cmx3,0 cm 1983	CHARLES DAUDELIN (1920-2001) R.C.A. La cité Lithograph É.A. 4/4 45,5 cm x 63,5 cm 1977
MARCEL BELLERIVE R.C.A. - (1934-2004) Pins du Québec Serigraph 33,0 x 51,5 1987	Jean-Paul RIOPELLE (1923-2002) R.C.A. La Haie Lithograph 41,0 cm x 81,0 cm 1967	DONNA ANDREYCHUK Northern Lake Oil on canvas 36"x30" 2012
MARCEL BELLERIVE R.C.A. - (1934-2004) Applicage Serigraph 57,0 x 38,0 1977	Jean-Paul RIOPELLE (1923-2002) R.C.A. L'affût Lithograph 73,0 x 85,0cm 1967	DONNA ANDREYCHUK Bay of Fundy Oil on canvas 16"x16" 2007
MARCEL BELLERIVE R.C.A. - (1934-2004) Sous-terre Serigraph 51,0 x 35,6 1989	Jean-Paul RIOPELLE (1923-2002) R.C.A. FEUILLE I Lithograph 90,0 x 62,5cm 1967	ROBIN BARATTA Chester's Lament Glazed Acrylic on board 24"x24" 2019
MARCEL BELLERIVE R.C.A. - (1934-2004) Sac et ficelle Serigraph 51,0 x 40,5 1975	Jean-Paul RIOPELLE (1923-2002) R.C.A. FEUILLE II Lithograph 75,0 X 105,0 cm 1967	JACQUES HUET (1932-2009) L'ACROBATE Bronze H: 40,0 cmx L: 36,0 cm x P: 17,5 cm 2000
MARCEL BELLERIVE R.C.A. - (1934-2004) Multiples fenêtres Serigraph 50,5 x 67,0 1990	Jean-Paul RIOPELLE (1923-2002) R.C.A. FEUILLE IV Lithograph 75,0 X 105,0 cm 1967	CLARK MCDUGALL (1921-1980) Reservoir Behind #34 Oil on board 5"x6" 1953-55
MARCEL BELLERIVE R.C.A. - (1934-2004) Mirage Serigraph 70,0 x 50,0 1990	MARC-AURÈLE DE FOY SUZOR-CÔTÉ (1869-1937) R.C.A. Bacchante Plaster sculpture 24,0 cm x 32,0 cm x 25,0 cm 1924	CLARK MCDUGALL (1921-1980) Old St. Thomas Church Oil on board 5"x6" 1953-55
MARCEL BELLERIVE R.C.A. - (1934-2004) D'un écran à l'autre Serigraph 35,0 x 49,0 1979	MARC-AURÈLE DE FOY SUZOR-CÔTÉ (1869-1937) R.C.A. L'INDIENNE Plaster sculpture 41,0 cm X 26,0 cm X 24,0 cm 1924	CLARK MCDUGALL (1921-1980) Catfish Creek, Sparta Oil on board 5"x6" 1953-55
	CHARLES DAUDELIN (1920-2001) R.C.A. L'envol Lithograph 19/20 63,5 cmx91,0 cm 1977	NORVAL MORRISSEAU (1932-2007) Fish Clan Acrylic on canvas 33"x47" 1976

*Marc-Aurèle de Foy Suzor-Côté RCA was a French Canadian painter and sculptor. He was one of the first native-born Canadian artists whose works were directly influenced by French Impressionism of the 1860s*



# Membership 2020

Jane Atkinson - White  
Clifford Barwick  
Emily & Scott Bate  
Lynda Baughman  
Helga Bear  
Phillip Bell  
Peter Bloch-Hansen  
Elizabeth Bourque  
Helen Bukor  
Amanda Caldwell-Wraith  
Mary Carnahan  
Pat Clinton  
Patti Chochrill  
David Dale  
Carol Ewaskiw  
Don Ferguson  
Robin Lynn Fleming  
Sue Fortin - Smith  
Lisa Gerrard  
Anne Gilbert  
Beth Green  
Cornelia Greger  
Robin Grindley  
Mary Gullis  
Ali Harris  
Dang Ho  
Joseph Hubbard  
Neil Hubert  
Matt & Miranda Hughson  
Marion E. Hummel  
Debra Jackson Jones

Dennis Kalichuk  
Janet Kennedy  
Brooke Kewley  
Patrick Landsley  
Kathy Lyle  
Diane Marcou  
Brian Masschaele  
Kathleen O'Dea  
Margaret Patterson  
Alice Price-Vermeulen  
Elizabeth Raven  
Jan Row  
Brenda Sheridan  
Shirley Shore  
Amy Sloan  
Margie Snowsell  
Anna Tanguay  
Josepha van den Anker  
Harry Wilkinson  
  
**FAMILY**  
Ardythe & Fred Anderson  
Janet Brody  
Diane Dobson  
Jane & James Hughes  
Tom & Colleen Hughes  
Jim & Rita Herbert  
Heather Jackson  
Donald Leitch  
Michael & Dana Lindsay  
Kathy & Dan McNeil

Minerva Art Gallery  
Joanne Rowles  
Wendy Saby & Dennis Siren  
John & Lois Smith  
Andrés & Catherine Villar  
  
**CONTRIBUTING**  
Janet & Philip Ballantyne  
Betty Burrell - Beaudry  
Bob Bozak & Sara Steers  
Jenny Couse  
Joan & Darrell Dennis  
Dawn Doty  
Lauree Dunlop  
Joyce M. Ferguson  
Ted Gilchrist  
Margaret Glover  
Eileen Grimley  
Kim & Allan Hughson  
Dagny & Mary Beth Ingolfsrud  
Joel Keenleyside  
Elizabeth Kusinski  
Dr. Donald & Mrs. Gillian Lawrence  
Serge Lavoie  
Grayden Laing  
Steven McLarty-Payson  
Michael & Debra Menear  
St. Thomas Art Guild  
Larry A. Russell & Tame-lynda Lux  
Rowena Spersrud

Tony Stacpoole  
Carole Watson  
Steve Wookey  
  
**SUPPORTING**  
Suzanne Baehr  
Agnes Berko  
Kathy Collier  
Brenda Fuhrman & Jim Barber  
Sine Herold  
Joan & Matt Janes  
Wayne & Maxine Kentner  
Sharon Little  
Sally & John Martyn  
Carolyn & Gary McLeod  
Wendy & Dan Tippin  
Ian Tripp  
Malcom & Monique Wood  
  
**SPONSORING**  
Carl & Debra Bagshaw  
John & Karen Hueston  
Todd & Kathy Noble  
  
**SUSTAINING**  
Ian Begg  
Brian & Mary-Ellen Bolt  
Candy McManiman  
St. Thomas Down Town Development Board  
Elgin Contracting and Restoration Ltd.





# Donors / Grants

## Sponsors

Aylmer Express  
Doug Tarry Limited  
Geerlinks Home Hardware  
Kenny Insurance Broker  
OMAC Mortgages LTD  
Railway City Tourism

## Annual Giving 2020

Glen White Investments

## General Donations

Cliff Barwick  
Carlos Carreira  
Suzanne Faris  
Ray Galloway  
Anne Gilbert  
John and Nancy Hofhuis  
Candy McManiman  
David and Sandra Marr  
Gerald Pedros  
Mike Pineau  
Dan Reith  
Larry A. Russell  
Catherine Elliot Shaw and John Shaw  
Tony Stacpoole  
Patrick Thibert  
Peter and Pat Thorton  
Wendy and Dan Tippin  
Yurek Pharmacy Limited

## Inspire a Student

Elgin Contracting and Restoration Ltd.  
Kinsmen Club of St. Thomas  
Lions Club of Port Stanley

Lions Club of St. Thomas  
Optimist Club of St. Thomas Bingo  
The Centennial Sports Club of St. Thomas  
Williams Funeral Home Ltd.  
Malcolm and Monique Wood

## Estate / Bequests

Barbara Anne Bridge Estate

## Permanent Collection

Robin Baratta  
François Beauchamp  
Carlo Carreira  
Michael Crane  
The Crocker Family  
François Constantin  
Guy Gagnon  
Huguette Leblanc Gagnon  
Steve Henderson  
Lynn Hoy  
Gerald Pedros  
Steve Peters  
Jan Row  
Josepha van den Anker  
Andrew Wilkie

## Gifts in-kind

Cheryl Barr  
Beamish Landscape Services  
Blyth Festival  
Chris Cherry  
Clovermead  
Michael Crane  
Pat Clinton  
Downtown Development Board  
East Park Golf Gardens

Flying Squirrel London  
Robin Grindley  
Chad and Rebecca Hamilton  
Nancy Hansen  
Sine Herold  
Wil Herold  
John and Nancy Hufhuis  
Mr. and Mrs. James Hughes  
Dawn Jetten  
Lynn Hoy  
Heather Keating  
Martha Khan  
Ellen Laing  
Al Magrath  
Gerry Martin  
Candy McManiman  
Kevin and Susan Morrel  
Toni Paxton  
Port Stanley Festival Theatre  
Shaw Festival Theatre  
Sikorski Sausage Company  
Kristy Sinden  
Amy Sloan  
Shawn Southern  
St. Thomas Golf and Country Club  
Janet Taylor  
The Bistro  
The Estate of Ron Payson  
Jens Thielsen  
TIFF Bell Lightbox  
Aidan Urquhart  
Josepha van den Anker  
Wendy's Restaurant

## Grants

Estate of Donna Vera Bushell with-  
in Elgin-St. Thomas Community

Foundation - New Technologies  
 Estate of Donna Vera Bushell with-  
 in Elgin-St. Thomas Community  
 Foundation - Art Trees and Trails  
 South West Ontario Safe Open  
 Emergency Support Fund for Cul-  
 tural, Heritage and Sport Organiza-  
 tions  
 Emergency Community Support  
 Fund within Elgin-St. Thomas  
 Community Foundation supported  
 by the Government of Cana-  
 da. Project: *Access to art educa-  
 tion*.  
 Howard and Alice Williams Fund-  
 2020 Grant  
 Doug Tarry Homes  
 #projectgiveback

**In Memory of Lois Farley**  
 Janet and Philip Ballantyne  
 Dr. Rob and Tammy Black  
 David Douglas  
 Jack and Louise Ferriman  
 Alexander & Michelle Fetterly  
 Helen Green  
 Irish Benevolent Society of London  
 Area  
 Kathy Hagerman  
 Bob and Mary-Anne Heath  
 Sine Herold  
 Sharon Little  
 David Locke  
 Locke Insurance  
 Ellen Luft  
 Mary Helen Raynham  
 Shirley Shore

**In Memory of Margaret Ferguson**  
 Marilynn Andrews  
 Sandra and Gene DiMeo  
 Bob and Mary-Anne Heath  
 Ineslee Farms LTD.  
 Donald Kentner  
 Sharon Little

**In Memory of Bill Kish**  
 Laura Johnson

## IN REMEMBRANCE



First picture: St. Thomas Times Journal May 3, 1969 Members of the executive of the Art Foundation for St. Thomas and Elgin County are, standing, left to right, E.F.S. Sanders, Q.C., legal advisor; George F. Copeland, vice-president; Donald H. Anderson, president; Mrs. R.O. Farley; W.F.M. Haight; Mrs. W. Scott McKay; seated, Mrs. David T. Little, secretary; and Mrs. George E. Thorman.



Second picture: St. Thomas Times Journal June 22, 1971 First Annual Meeting - The women's committee of the Art Gallery of St. Thomas-Elgin held at the St. Thomas Golf and Country Club. Left to right are Mrs. R.O. Farley, who was hostess for a reception at her home prior to the meeting, and who is education chairman; Mrs. Jack Roberts, retiring president; London artist Mr. Greg Curnoe; and Mrs. J.D. McDonald, president-elect."

"Interest in the founding of a local gallery first developed in the fall of 1968, when the National Gallery of Canada sent requests across Canada for financial assistance to help them in renovating and extending their premises in Ottawa. When one such request was received by the University Women's Club of St. Thomas, a creative arts committee was created. After considering the request of the National Gallery of Canada, Lois Farley informed the University Women's Club at their next meeting that Elgin County needed its own Art Gallery. Within only a month of first considering the idea, she had convinced not only the University Women's Club, the Creative Arts Committee, personal friends and neighbours, but also the "Green Spot Ladies" as they were fondly called: Bert McKay and Margaret Thorman. Knowing that these two women were not only interested in art, but also tenacious, Mrs. Farley enlisted their support in a fund-raising project." - taken from

*"Our (not so brief) History" by Lois Farley*

So many exceptional people have contributed to the success of the Public Art Centre over the past 50 plus years. But, Lois Farley's initial vision, single-minded determination and ability to confidently inspire and motivate people are at the foundation of all that has been achieved.

Thank you for making even the most challenging situations seem possible, enjoyable and very worthwhile.