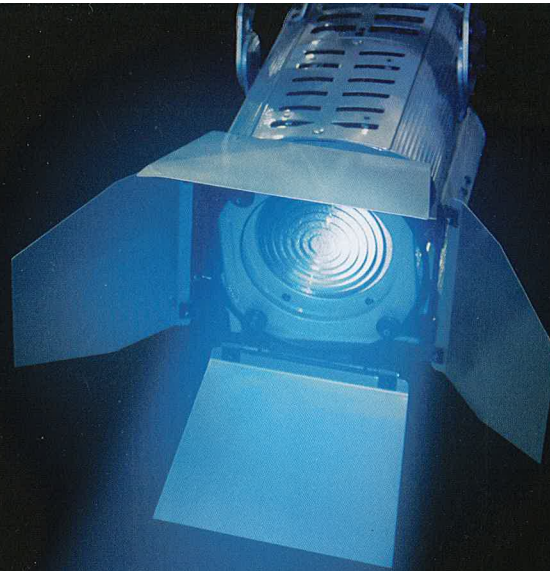


80 years on stage
and still acting up...



**Western
Ontario
Drama
League**

Festival 2013

Hosted
By



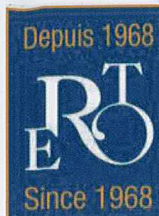
**Guelph Little
Theatre**

ENTERTAINING GUELPH SINCE 1935



RTO/ERO
congratulates
the cast and
crew of the five
productions
chosen to participate
in the
2013 WODL Festival.

Break a leg!



À votre service...pour le soin de votre avenir.

THE RETIRED TEACHERS OF ONTARIO
LES ENSEIGNANTES ET ENSEIGNANTS
RETRAITÉS DE L'ONTARIO

Here for you now ... Here for your future.



Holiday Inn

GUELPH HOTEL & CONFERENCE CENTRE

Celebrate NEW with us

Elements ON STONE
RESTAURANT & LOUNGE

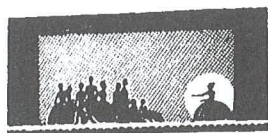
New menu. New atmosphere.
Same great friends.

DISCOVER YOUR ELEMENT: 519.836.0231

www.higuelfh.ca

601 Scottsdale Drive - Guelph - Ontario

*Under the distinguished patronage and in the presence of
HIS EXCELLENCY THE GOVERNOR GENERAL*



The **DOMINION DRAMA FESTIVAL** **1933**

Final Competition for
The Bessborough Trophy

**THE LITTLE THEATRE
OTTAWA**

April 24th to 29th

EVENINGS AT 8:20 PRECISELY
MATINEES WEDNESDAY AND SATURDAY AT 2:40 PRECISELY
(Doors open at 7:45 and 2:00)

AND THE (1933) WINNERS WERE...

In March 1933, at the first WODL Festival, adjudicator S. Morgan Powell selected three best productions. The winner was from Hamilton and the runners-up were from Sarnia and London. All three plays were presented in April 1933 at the first Dominion Drama Festival in Ottawa.

"FANCY FREE"

By STANLEY HOUGHTON

A fantastic comedy in one act

Presented by the Players' Guild of Hamilton

Scene: The writing-room of the Hotel Cosmopolitan, Babylon-On-Sea

FANCY
ALFRED
ETHELBERT
DELIA

Betty Campbell
Guy R. Whitcombe
Beresford Hamilton
Molly Broughall

Director – BART G. SULLIVAN

"THE ANT WORLD"

from

And So Ad Infinitum (The Life of the Insects)
or

The World We Live In

By KAREL and JOSEPH CAPEK

Presented by The Drama Club of Sarnia

A TRAMP	C.E. Woodrow
THE BLIND TIMEKEEPER	Agnes Depew
THE CHIEF ENGINEER	Pam Haney
THE SECOND ENGINEER	Arthur Hay
AN INVENTOR	W.S. Hunt
FIRST MESSENGER	George Jamieson
A JOURNALIST	Lucie Cook
A PHILANTHROPIST	Eileen Hunt
A SIGNAL OFFICER	George Jamieson
COMMANDER OF THE YELLOWS	W.S. Hunt
Other Black and Yellow Ants	Jane Clark, Carol Howard, Constance Kenny, Helen Halton, Jack Depew, D'Arcy Hunt

The play is based on an analogy between the life of human beings and the life of insects. The third act (the only act of the play being presented) is complete in itself and in it the ants represent the workers, wage slaves and industrial traders.

Directors – D.P. JAMIESON and R.V. HOWARD

"LITHUANIA"

By RUPERT BROOKE

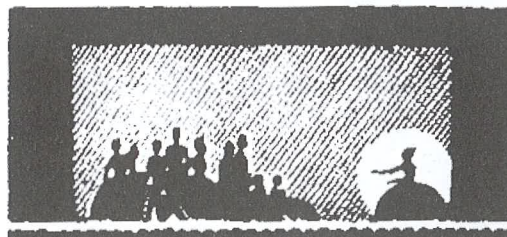
Presented by The London Drama League

Scene: A Hut in Lithuania

THE STRANGER	John Burton
THE MOTHER	Catharine McC. Brickenden
THE DAUGHTER	Ruth White
THE YOUNG MAN	Harry Wilde
THE FATHER	Logan Towers
THE VODKA SHOPKEEPER	Howard Fitzallen
THE VODKA SHOPKEEPER'S SON	Agar Treleven

Director – JOHN BURTON

80 YEARS ON STAGE AND STILL ACTING UP !



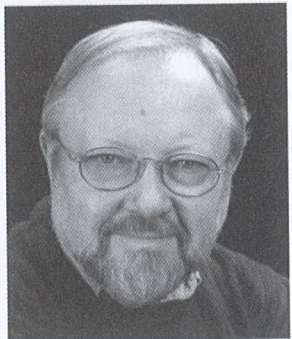


Greetings from Guelph Little Theatre

When the WODL Board wrote Guidelines for how to organize their annual theatre festival, they claimed that one of the benefits of hosting is "an impetus to improve facilities." Is it ever!! In the past year, as Guelph Little Theatre has prepared this festival, we have also done a thorough cleaning and purging of our theatre, re-painted all public spaces, resurfaced the auditorium floor, installed new wheelchair pads and purchased 250 new seats (thanks in large part to a Trillium grant). Even the curtains are cleaned and re-flame-proofed.

Meanwhile, your hotel hosts, the Guelph Holiday Inn and Conference Centre, have done the same – a complete renovation and redecorating of all public spaces and private bedrooms. They must have seen us coming. This will undoubtedly be the festival with the freshest face WODL has ever seen. Welcome to Guelph.

RON LONCKE - GLT President - Festival Co-Chair
DENNIS JOHNSON – Festival Co-Chair

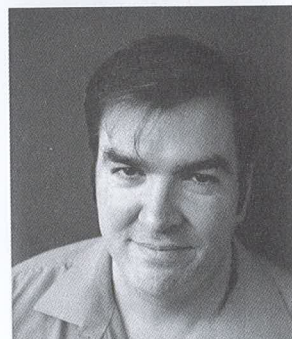


Greetings from Western Ontario Drama League

Welcome Ladies and Gentlemen to the WODL Festival in lovely Guelph. This festival is a glowing example and a celebration of the dedication and hard work our volunteers display in community theatre. It is not just a celebration of the groups that will come to festival to perform for you this week, but also of all the wonderful theatre that has taken place this past season throughout our region. On behalf of the WODL Board of Directors, I welcome all of you to our week of celebration and trust that you will enjoy wonderful theatre and the groups that participate will dazzle us with their hard work and artistry.

Cheers

HARRY EDISON – WODL President



Greetings from Theatre Ontario

On behalf of Theatre Ontario, we would like to extend our congratulations to the cast and crew of the five performing groups, a warm welcome to the audiences and a big thank you to the Festival committee. The Western Ontario Drama League has a tremendous legacy of exceptional theatre. This year WODL celebrates its 80th Anniversary.

This milestone will be memorialized in a new award for Best Production of a Canadian Play named for Catharine Brickenden. Catharine was one of the founders of the Western Ontario Drama League and her reach in community theatre extended beyond the WODL Region through Ontario to the entire country.

Theatre Ontario continues to nurture and support community theatre through workshops, courses and networking opportunities. This year Theatre Ontario's Introduction to Adjudication Course is being held at this Festival. Successful participants in these courses will become the Adjudicators of the future. Thank you to everyone involved in the Festival – break a leg!

CAROL BEAUCHAMP - Executive Director
ANNE MOONEY - Community Theatre Coordinator



WODL THEATRE FESTIVAL - 2013

FESTIVAL COMMITTEE

Co-Chair (GLT)	Ron Loncke	Health & Safety	Robin Jackson
Co-Chair (Hotel)	Dennis Johnson	Workshops	Dennis Johnson
Finance	Julia Finley Loncke	Festival Box Office	Ron Loncke, Julia Finley Loncke
Secretary	Liz Dent	Entertainment	Don Macrae and Ann Stevenson Macrae
Website	Paul Briggs		Beverly Matson
Hospitality Room	Ken Cameron	Banners	Ken Menzies
Stage Management	Gary & Lin Chapman	Adjudicator Host	Brian Pickles
Hospitality at GLT	Ruth Connor	Photographer	Brian Pickles
House Management	Liz Dennis	Technical Director	Liz Poulton, Margaret Snowdon
Bar Management	Beth Freeth	Opening Reception	Jayne Simpson
Program Graphics	Martina Graham	Awards Gala	Trevor Smith-Diggins
Technical Advisors	Dennis Gray, Paul Briggs	Publicity	

WESTERN ONTARIO DRAMA LEAGUE

BOARD OF DIRECTORS

President	Harry Edison	STANDING COMMITTEE CHAIRS	
First Vice-President	Gina Paradis	Adjudications	Ken Menzies
Second Vice-President	Tim Dawdy	Awards	Shirley Bieman
Secretary	Tricia Ward	Constitution & Policy	Linda Agocs
Treasurer	April Chappell	Festival	Dennis Johnson, Ron Loncke
Past-President	Michelle Spanik	Membership & Development	Sue Perkins
		Minifest	Bev Dietrich
		Theatre Ontario Liaison	Mark Mooney
		Webmaster	Andy French

AREA VICE PRESIDENTS

Brant-Halidmand-Norfolk	Al Lee
Bruce-Grey	Leise Peddie
Elgin-Middlesex-Perth	Laura Jean McCann
Essex-Lambton-Kent	Andre Paradis
Lincoln-Wentworth	Michelle Spanik
Oxford	Janice Lundy
Waterloo-Wellington	Gerry Butts

HONORARY LIFE PRESIDENTS

Fay & Lawrie Bonanno, Anne Wilson

HONORARY LIFE MEMBERS

Fred Hadley, Bill Meaden, Sue Perkins

GUELPH LITTLE THEATRE

BOARD OF DIRECTORS

President	Ron Loncke	Properties	Barbara Bryce
Past President	Gerry Butts	Workshops	Tony DeCiantis
Vice President	Robin Bennett	Social	Beth Freeth
Treasurer	Pat Wiggins	Sound	Dennis Gray
Secretary	Marg Perchaluk	Health and Safety	Robin Jackson
Production Manager	Robin Bennett	Costumes and Fundraising	Julia Finley Loncke
Memberships and Volunteer Coordination	Tom Bolton	Publicity	Jen Peleschak
	Matt Brenner	Rentals	Brian Pickles
Lights	Paul Briggs	Make-Up	Connie Shaw
Sets and Website/I.T.		Box Office	Shelley Tuff

Greetings from City Hall



Greetings and Welcome! On Behalf of the City of Guelph and its citizens, I am pleased to welcome you to the 2013 Western Ontario Drama League (WODL) festival. The City of Guelph and Guelph Little Theatre are pleased to host this august event.

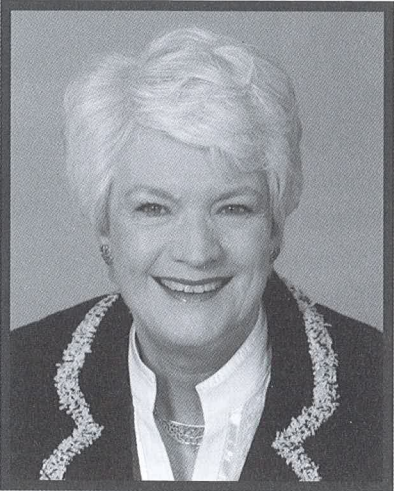
Local patrons and visitors from Western Ontario look forward to a great week of theatre productions at the newly renovated and beautiful Guelph Little Theatre. I encourage our visitors to take the opportunity to visit local stores and restaurants.

I am also pleased to extend congratulations to the WODL festival on your 80th anniversary. This is a significant milestone. Thank you for years of uniting community theatre groups in Western Ontario. You continue to play an important role of supporting and encouraging community theatre.

All the best for a successful festival!

Sincerely,
Karen Farbridge, Mayor

Greetings from Queen's Park



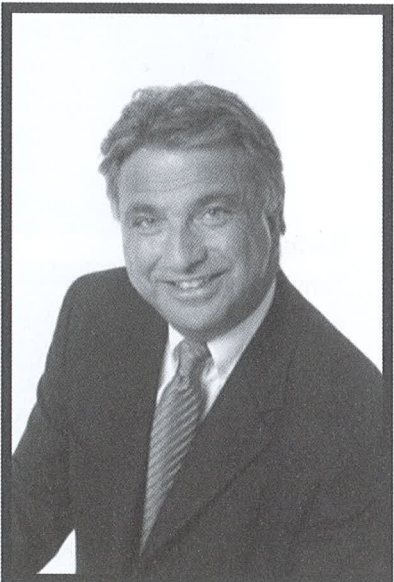
As the Member of Provincial Parliament for Guelph, I would like to take this opportunity to welcome you to the city of Guelph and to the Western Ontario Drama League Festival. It is an honour for Guelph Little Theatre and Guelph to be hosting the 80th anniversary of the WODL Festival. It is a wonderful chance for theatre-goers from Guelph and all of Western Ontario to enjoy high quality performances.

Congratulations and thanks to the organizers, volunteers, and performers who have invested countless hours to make this year's Festival a success. Congratulations and thanks also to GLT volunteers for their hard work in refurbishing their theatre and for providing citizens with excellent theatre productions since 1935. Guelph is very fortunate to have such passionate and dedicated volunteers who promote theatre so enthusiastically.

I hope that you will enjoy your visit to Guelph, the five award winning plays, and the Awards Gala Banquet.

Liz Sandals, MPP, Guelph

Greetings from Ottawa



It is my distinct honour as Member of Parliament for Guelph to welcome all of you to the 80th Annual Western Ontario Drama League festival. By celebrating the best in the performing arts and community drama the Western Ontario Drama League fulfills its mission of growing imaginations and fueling creativity in actors throughout our region.

Guelph in particular is an exceptionally creative community, renowned for our writers, painters, dancers, singers, actors and artisans, who will no doubt have the opportunity to display their talents through participation in this year's festival proudly hosted by Guelph Little Theatre.

Over the past 80 years, our lives have been made richer for theatre brought into our lives by the Western Ontario Drama League. I know you will each continue to interpret the world around us in the most wonderful and fascinating ways as you use your talents to express to the world who we are individually, as a community and as a nation.

I wish you all the best on a successful festival! Best regards,

Frank Valeriote, MP, Guelph

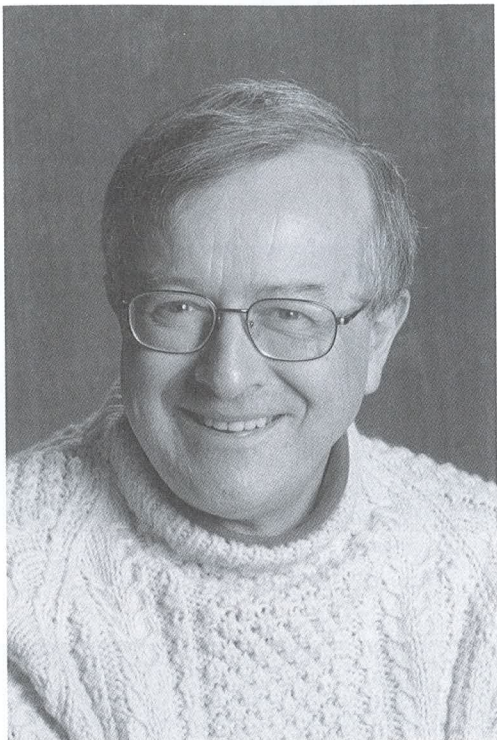


Photo by Terry Manzo

PRE-FESTIVAL ADJUDICATOR – DR. ROSS STUART

DR. ROSS STUART is an experienced theatre director and academic administrator. He has directed and stage managed professionally in summer theatre, and has adjudicated for community theatre festivals in all regions of Ontario, including the Theatre Ontario Festival. Ross is former Chair of the Department of Fine Arts at Atkinson College, Chair of the Department of Theatre at York University and Associate Dean of the Faculty of Fine Arts at York. He has taught everything from acting and directing to stage and lighting design and playwriting, from Shakespeare to musicals. An expert in musical theatre and Canadian theatre history, he has published extensively and helped found the Canadian Theatre Review journal.

Currently his concentration is on improvisation, playmaking, and new play dramaturgy, helping groups create theatre from a variety of sources. Ross has also adapted and directed works by Shakespeare, Ibsen, Louisa May Alcott, Shel Silverstein and Stephen Leacock for educational theatre. His publications include a book on prairie theatre and studies of the Stratford Festival, summer theatres, Canadian musicals and post-secondary theatre for various reference books. Ross has also directed for community theatres, including THE MIRACLE WORKER for Thistle Theatre, Embro.

IN-FESTIVAL ADJUDICATOR – BEATRIX QUARRIE



Bea Quarrie has been involved in theatre almost all her life. Her stage experience ranges from her first role learned phonetically at age eleven to two summers playing a lead role in the 4th Line Theatre production FOR HOME AND COUNTRY, to directing a high school production of PAPER BAG PRINCESS in Yingkou, China for viewing by 42 million people. As well as being a theatre practitioner, Bea has served as an arts advocate on regional, provincial and national committees and Boards of Arts Councils, theatre companies and theatre service organizations. She is the co-founder of five different theatre companies in Peterborough, Ontario, where she has lived for the last 42 years. Her education includes an Honours degree in Drama and Fine Arts from the University of Guelph, studies in England with Peter Brook, summer courses at Theatre Ontario and an Arts Management course at Banff.

A member of a Canadian Theatre Educators delegation to Cuba, she has taught high school drama, adjudicated Sears and community theatre drama festivals for thirty years, and has directed over eighty productions ranging from Rashomon to Murray Schafer's THE ENCHANTED FOREST and WOLF SHALL INHERIT THE MOON. Since retiring

from teaching at Lakefield College School, Bea has been directing, performing and play polishing as well as exhibiting her large abstract paintings with the Abstract 10 group of artists of Peterborough. An award-winning director whose productions have been chosen to represent Canada at international festivals in Canada, Japan, Germany, Aruba and Venezuela, Bea strongly believes in the transformative power of the arts.

Monday, March 11, 2013

Opening Reception Sponsors

**COLDWELL
BANKER**
NEUMANN
REAL ESTATE BROKERAGE

Frank Basso

Sales Representative

Office: 519-821-3600
Cell: 519-831-8804 Fax: 519-821-3660

frank-basso@coldwellbanker.ca
www.frankbasso.ca

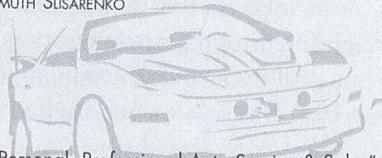
824 Gordon St. Suite 201, Guelph, ON, N1G 1Y7
Each office is Independently Owned and Operates



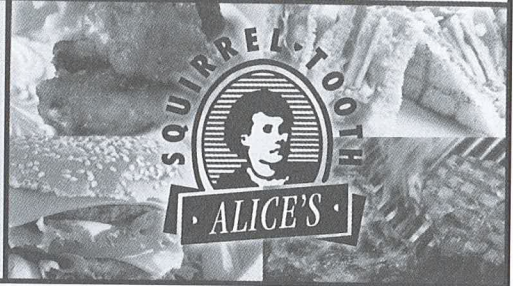
**GUELPH BROCK ROAD
GARAGE LTD.**

HELMUTH SUSARENKO

TIRECRAFT
We'll get you home



"Personal, Professional Auto Service & Sales"
1483 GORDON STREET, GUELPH, ON. N1L 1C9 822-3771



Established 1988

Lloyd Lindsay
818 Watson Rd. S. Arkell, ON N0B 1C0

519.763.1162 Fax: 519.763.4672
lloyd@lindsaycorp.ca
www.lindsaycorp.ca



**UK 2 Canada
Pension Transfers**



Mike Rochford

410 Silvercreek Parkway North
Guelph, ON.
N1H 1E8

Tel: 519-821-0257
Toll: 1-888-511-9766
Fax: 519-821-2003

Email: uk2canada@rogers.com

uk2canadapensiontransfers.com



Action Mobility

Home Health Products
Sales • Service • Rentals

Robert Erickson

519-767-1300

249 Edinburgh Rd. N Guelph, ON N1H 5S2
robert@montenico.com



F&M BREWERY

**Guelph's little brewery
is proud to support
Guelph Little Theatre
and the
WODL Festival**

Enjoy the show and grab a Stone Hammer!

F&M Brewery/Stone Hammer Beer
355 Elmira Road N., Guelph, Ontario

Phone #: 519-824-1194
Toll Free #: 877-316-2337



Elmira Theatre Company Ltd

presents

SHORTHANDED

by Michael Grant

CAST

In order of appearance

Hole
Hammer
Timber
Dewey
Cammy
Wicker
Suds
Newbie

Joe Brenner
Andrew Frey
Thom Smith
Bill Calder
Brian Otto
John Bigelow
Andy Wasylycia
Brandon Maxwell

PRODUCTION STAFF

Director

Producer

Stage Manager

ASM

Set Design

Set Construction

Assisted by

Set Painting

Lighting Design/Operator

Sound Design/Operator

Costumes

Properties

Makeup

Front of House

Poster

Videographer

Play Polisher

Special Thanks

Mike Grant

Rita Huschka

Bev Dietrich

Kathy Fahey

Phil Dietrich

Paul Dietrich

Ken Frid, Rod Henderson, Sam Read,

Ken Harkes, Quentin Martin

Phil Dietrich, Sam Read

Gord Grose

Mic Michenfelder

Deb Deckert

Sherry Heine

June Spidell

Rose Ens

Julie Herteis

Mike Grant

Brian Coatsworth

Tim Dawdy

Shorthanded is produced by permission of the author.

There will be one 20-minute intermission.

Please remain in your seats after the play is over.

A PUBLIC ADJUDICATION takes place after the Curtain Call.

If you must leave early, please use the EMERGENCY EXIT at the rear of the auditorium

Wednesday, March 13, 2013

WEDNESDAY'S WORKSHOP – HOW TO PICK A SCRIPT

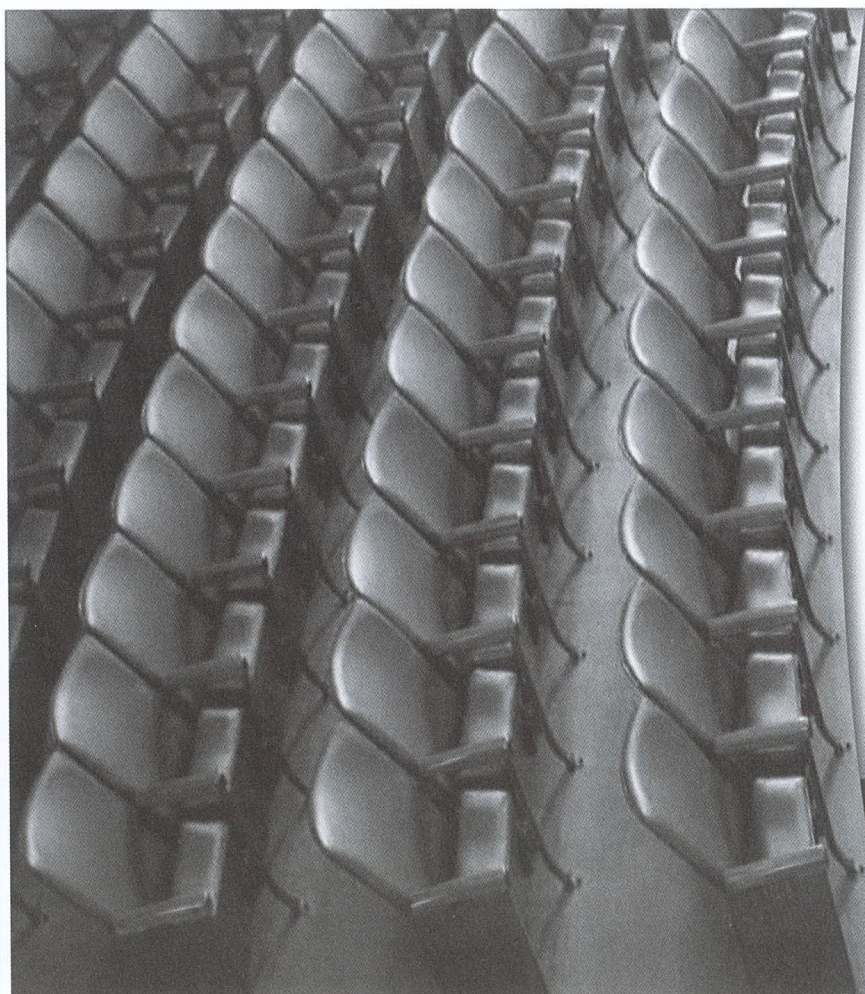
Presented by Bea Quarrie

Live theater is facing many challenges, and attracting audiences with engaging works is one of them. Where does one go to find challenging scripts? What determines a winning script from a weak one? What demands does a classic have over a brand new script? How do people select scripts for their group, and how might a company find balance for a season?

Over the last two years, workshop leader BEATRIX QUARRIE has directed COSI, HOUSE (a one-man show by Daniel MacIvor), PRIDE AND PREJUDICE, VIMY (a wartime drama by Vern Thiessen), Ibsen's HEDDA GABLER, and SPAMALOT – all for community theatres in Peterborough and Cobourg. Bring a list of ten plays you would like to see produced by community theatres in your area.



Workshop sponsored by WODL



SDR SEATING

- Design Concepts
- Proposal Drawings
- Arena and Stadium Seating
- Auditorium and Lecture Room Seating
- Stacking and Folding Chairs
- Gym Equipment
- Grandstands
- Custom Seating and Platforms
- Refurbishing
- Bleachers
- Maintenance and Repairs

706 Shaver Road, Ancaster, ON L9G 3K9
PH: 905-304-1151
www.sdrseating.com



Owen Sound Little Theatre

presents

Kiss the Moon, Kiss the Sun

By Norm Foster

Cast

(in order of appearance)

Robert Castle
Claire Castle
Holly Fitch
Simon Garvey
Dr. Andrews

Matt Evans
Carroll Flood
Leanne MacLachlan
Neale Kemp
Robert Warrilow

Production Team

Director

Producer

Stage Manager
Assistant Stage Managers
Set Design
Construction Crew

Streetscape

Lighting Crew
Sound Operator
Incidental Music
Wardrobe
Make-up
Properties
Poster Design
Transportation provided by
Photography
Photography Facilitator

Bill Korince

Cathie Locke

Yvonne Korince
Lisa Miller, Cathie Locke
Bill Korince
Andrew Dinsmore, Gene Cassidy,
Jake Bates, Bill Korince
Carey Carrick, Mark Metai,
Valerie Prettie, Karen Braithwaite
Bill Murphy, Kathleen Cassidy, Sarah Grolla
Shauna Fenton
Ron Carney
Joan Spence
Leanne MacLachlan, Shauna Fenton
Jake Bates
Kathy Mighton, Bill Korince
Neale Kemp, Steve Meades
Charles Cottrell, Marty Angel
Ashley Grahlman

Special Thanks to...

Pianist Derek Paravini, who gave us permission to share his music

Kiss the Moon, Kiss the Sun is staged by arrangement with Pam Winter, Gary Goddard Agency, 10 St. Mary St. #305, Toronto, Ontario, Canada, M4Y 1P9, goddard@canadafilm.com, www.garygoddardagency.com Kiss the Moon, Kiss the Sun was first produced at Theatre Orangeville in Orangeville on September 19 to October 7, 2001

There will be one 20-minute intermission.

Please remain in your seats after the play is over.

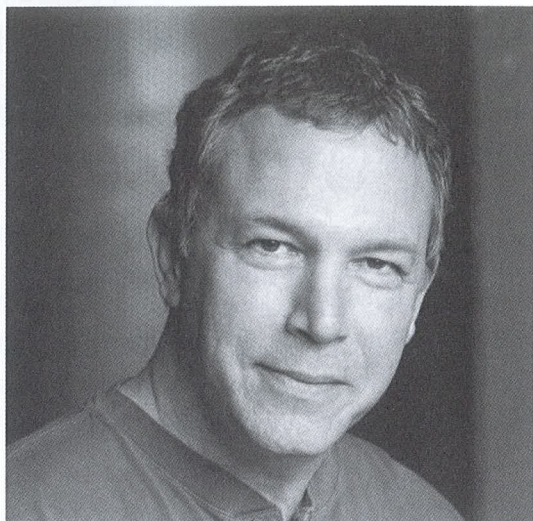
A PUBLIC ADJUDICATION takes place after the Curtain Call.

If you must leave early, please use the EMERGENCY EXIT at rear of auditorium.

Thursday, March 14, 2013

THURSDAY'S WORKSHOP - ACTING ON STAGE

Presented by Alan K. Sapp



What do you expect from your scene partner? How do you engage each other to bring electricity to your acting? Come prepared to memorize a short scene and work with a partner to find answers to these and other questions about what makes acting come to life on stage. Enrolment: No limit. Observers welcome.

Alan K. Sapp, a 20-year resident of Kitchener-Waterloo, is a founding member of Lost & Found Theatre, where he continues to act, direct and teach, and serves as Education Director. He has appeared in two world premiere productions by playwright Gary Kirkham, *QUEEN MILLI OF GALT* and *FALLING: A WAKE*. In 2008, Alan began work with the MT Space Theatre on *THE LAST FIFTEEN SECONDS*, which premiered at the Fall 2009 IMPACT festival in K-W and has been touring ever since. In 2012, Alan was seen as Duane Wilson in Drayton Entertainment's production of *HARVEY*. Alan received his BFA from Florida State University and his MFA from the Asolo Conservatory.

Happiness is a financial plan.

Talk to a Meridian Financial Advisor
today about building a financial plan.
Plan on smiling - a lot.



Clair & Gordon Branch | 2 Clair Rd. E. | 519-837-2560
Speedvale Branch | 200 Speedvale Ave. W. | 519-822-1072
Stone Square Branch | 370 Stone Rd. W. | 519-837-2233
Wyndham Street Branch | 153 Wyndham St. N. | 519-821-2101

meridiancu.ca

Your money. Your way.
Imagine that.





THEATRE SARNIA

presents

Calendar Girls

By Tim Firth

The Cast

In Order of Appearance

Cora
Chris
Annie
Jessie
Celia
Ruth
Marie
Brenda Hulse
John
Rod
Lady Cravenshire
Lawrence
Elaine
Liam

Mary Ann Hucker
Henri Canino
Holly Mayea
Ethel Crossman
Karissa Teskey
Adrienne Hughes
Liz Walton
Jane Janes
Dan White
Richard Teskey
Margaret Ward
Jay Peckham
Kathleen Smith
Shaun Hood

Time – the present

PRODUCTION STAFF

Director
Producer
Stage Manager
ASMs
Set Design
Set Construction

Set Décor

Lighting Design
Lighting Operator
Sound Design
Sound Operator
Video Projections
Costume Design
Wardrobe
Dressers
Properties

Book Holder
Makeup
Front of House
Photography

Dan White
Carol Kennedy
Andrew Hiltz
Judy Richardson, Mary Lou Parizeau
Dan White, Erica Schram
Bill Allingham, Bob Kennedy, Rick Mulligan, Dan
Williamson, Frank Canino
Erica Schram, Rose Canino, Ali Wilson,
Lynn Kershaw-Smith, Pam Wong
Brian Austin Jr., Geoff Buchanan
Geoff Buchanan
Henri Canino
Frank Canino
Frank Canino
Norma Wenning
Holly Wenning-Mayea,
Lyn Coulthard, Ruth Francoeur, Charmaine Jacklin
Mary Jo Webber, Carol Girard, Lynda McLeish,
Rachelle Lacroix, Anthony Fracalanza
Carolyn Robinson
Maddy Taylor
Carol Kennedy
Don Janes

*Calendar Girls is produced by arrangement with Samuel French (London) Ltd.
Based on the Miramax motion picture by Juliette Towhidi and Tim Firth*

There will be one 20-minute intermission.

Please remain in your seats after the play is over.

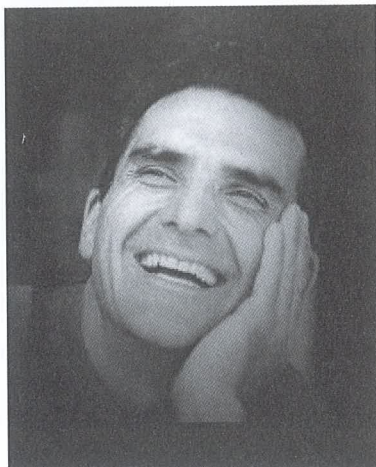
A PUBLIC ADJUDICATION takes place after the Curtain Call.

If you must leave early, please use the EMERGENCY EXIT at the rear of the auditorium

Friday, March 15, 2013

FRIDAY'S WORKSHOP – PLAY WRITING

Playwright-in-Person: Gary Kirkham



Gary Kirkham, a resident of Cambridge Ontario, is the author of *QUEEN MILLI OF GALT*, *POCKET ROCKET*, *PEARL GIDLEY* and *FALLING: A WAKE*. His plays have had over 40 productions across Canada, the United States and the Middle East. He was the Blyth Festival's Playwright in Residence in 2008. *QUEEN MILLI OF GALT* was winner of the Samuel French Canadian Playwriting Contest in 2004.

Gary is a member of the MT Space and has worked in collaboration with the company on several shows including *SEASONS OF IMMIGRATION*, *BODY 13*, *OCCUPY SPRING*, and the critically acclaimed *THE LAST 15 SECONDS*. He also collaborated with Lost & Found Theatre on *RADIO LEACOCK*.

At this workshop, Gary will be reading from several of his plays, including works-in-progress, and will talk about his process and invite questions from the floor.

This public play reading is made possible by the Playwrights Guild of Canada with financial support from the Canada Council. A book display and sales desk will be available before and after the workshop, presented by Playwrights Canada Press.



www.scenework.com

67 Watson Road South, Unit 7
Guelph, ON N1L 1E3
P: 519-837-0583
F: 519-837-2487

- Evaluation and consultation
- Design and specifications
- Supply and/or installation
- Service and maintenance
- Sales and parts
- Custom manufacturing
- Lighting
- Dimming
- Control
- Drapery
- Track System
- Grids

Authorized Strand Lighting Dealer & Service Centre

A proud sponsor of WODL 2013

present

ORPHANS

By Dennis Kelly

CAST

Liam
Helen
Danny

John Nabben
Jaqueline Tinus
Jeff Bastien

PRODUCTION STAFF

Director
Assistant Director
Stage Manager
Set Design
Set Construction/Decoration
Lighting Design
Sound/Music Design
Sound/Light Technician
Thanks to:
Music (pre & post show)
Co-op Students (2013)

Jeff Bastien & Ensemble
Kyla Chandler
Sara Campeau
Jeff Bastien
Drake Baird, Angelica Haggert, Lorraine Steele
Jeff Bastien
Tanner Dory
Samantha Hewitt
Dr. Barry Brodie
Carl Wong
Ben Doncom, Monica Sanborn, Sara Campeau

Produced with special permission from Casarotto Ramsay & Associates Ltd.

ADVISORY

This Performance Contains Coarse Language & Descriptions of Violence

There will be one 20-minute intermission.

Please remain in your seats after the play is over.

A PUBLIC ADJUDICATION takes place after the Curtain Call.

If you must leave early, please use the EMERGENCY EXIT at rear of auditorium.



NEXT YEAR IN WINDSOR !

Join us March 10–15, 2014 for next year's

WODL THEATRE FESTIVAL

*Hosted by T.I.S. Ensemble Productions
at the Capital Theatre, Windsor*

WODL FESTIVAL 2013

In-Festival Awards

THE ELSIE THOMPSON MEMORIAL AWARD

Outstanding Performance by a Juvenile
(A Juvenile is anyone who has not reached his/her 18th
birthday by March 1 of the current year.)
The Gift of ANNE WILSON

Awarded to _____

For _____

THE CALDER AWARD

Outstanding Performance by an Actress in a
Supporting Role
The Gift of THEATRE WOODSTOCK

Awarded to _____

For _____

THE PLAYERS GUILD AWARD

Outstanding Performance by an Actor in a
Supporting Role
The Gift of THE PLAYERS GUILD OF HAMILTON

Awarded to _____

For _____

THE DOLLY NUNAN AWARD

Most Promising New Actor or Actress
The Gift of GUELPH LITTLE THEATRE
(A newcomer is a person who has not had a role, speaking or
non-speaking, listed in the cast of characters, outside a school
production. The list of characters shall not include chorus work
or crowd scenes.)

Awarded to _____

For _____

THE REUBEN CARDINELL MEMORIAL AWARD

Best Co-ordinated Production
(The winner of this award is selected by the Host Group
Festival Stage Manager)
The Gift of GUELPH LITTLE THEATRE

Awarded to _____

For _____

THE SPANIK AWARD

Best Visual Production
The Gift of JOHN and MICHELLE SPANIK

Awarded to _____

For _____

THE HAROLD P. SELLERS MEMORIAL AWARD

Outstanding Technical Achievement
The Gift of THEATRE BURLINGTON

Awarded to _____

For _____

THE PAT & VINCENT MATHEWSON MEMORIAL AWARD

Outstanding Ensemble Work
The Gift of LYN MATHEWSON

Awarded to _____

For _____

THE BONANNO AWARD

Outstanding Performance by an Actress in a Major Role
The Gift of LAWRENCE and FAY BONANNO

Awarded to _____

For _____

THE TERRY DOYLE MEMORIAL AWARD

Outstanding Performance by an Actor in a Major Role
The Gift of JOYCE DOYLE

Awarded to _____

For _____

SPECIAL ADJUDICATOR AWARDS

Special Awards of Merit selected by the Festival Adjudicator –
Two awards from each sponsor.

KAY MCKIE MEMORIAL AWARDS

Awarded to _____

Awarded to _____

The Gift of JOHN and ROSEMARY TAIT

Awarded to _____

Awarded to _____

The Gift of TIM DAWDY

Awarded to _____

Awarded to _____

THE ANNA GRAHAM MEMORIAL AWARD

Outstanding Direction
The Gift of LLOYD and CAROL LINDSAY & FAMILY

Awarded to _____

For _____

THE D. PARK JAMIESON MEMORIAL AWARD

Best Production in Festival
The Gift of THEATRE SARNIA

Awarded to _____

For _____

W.O.D.L. REGIONAL TROPHY

Presented by WODL to the Winner of the Best Production
(To be presented annually and kept by the winning group for one year.)



Theatre Ontario Festival 2013

HOSTED BY DOMINO THEATRE AND E.O.D.L.
At The Davies Foundation Auditorium- 52 Church St., Kingston

May 15 to May 19, 2013

The W.O.D.L. entry performs Thursday May 16

ADJUDICATOR – John P. Kelly

PLAYWRIGHT IN PERSON – John Lazarus

www.dominotheatre.com



**Thistle
Theatre**

is hosting the Western Ontario Drama League

Minifest!

July 26 and 27, 2013

Embrow, Ontario

This year's play:

The Triumphant Embarrassment of Willy Last by Lynda Martens

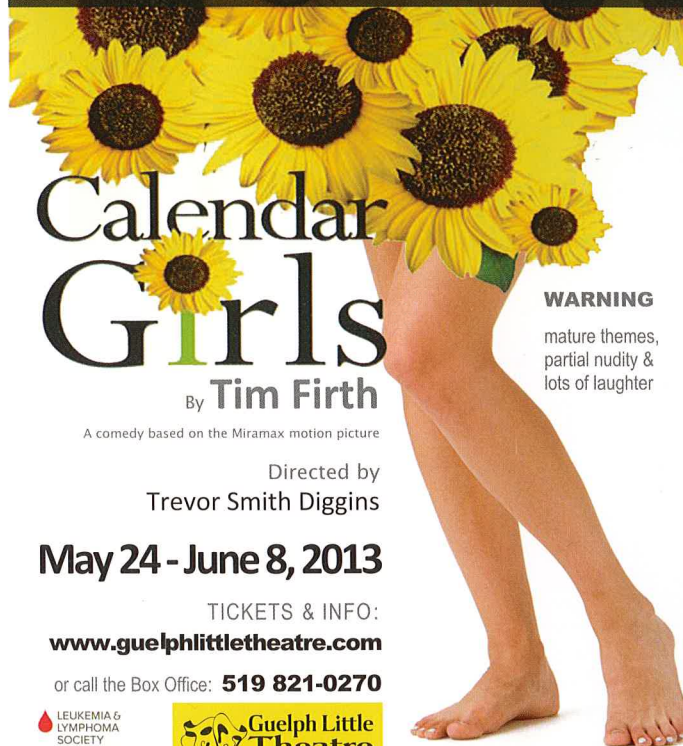
Last time we hosted we had a plethora of paparazzi, a FAPPP feast, and divine dining. What will we offer this year?
Join us and find out!

Visit our website for up-to-date information on
this incredibly FUN weekend:
www.thistletheatre.ca

or go to www.wodl.on.ca

See more of the girls here!

Coming in May to Guelph Little Theatre



Calendar Girls

By Tim Firth

A comedy based on the Miramax motion picture

Directed by
Trevor Smith Diggins

May 24 - June 8, 2013

TICKETS & INFO:

www.guelphlittletheatre.com

or call the Box Office: **519 821-0270**



Produced by arrangement with Samuel French (London) Ltd.

WARNING
mature themes,
partial nudity &
lots of laughter

COMING TO



**Guelph Little
Theatre**
Entertaining Guelph Since 1935

IN APRIL!

**APRIL 12-27
2013**

Kiss The
Moon
Kiss The
Sun
by Norm Foster
Directed by Robin Bennett

TICKETS & INFO:
www.guelphlittletheatre.com

or call the Box Office:
519 821-0270



eyeGO.org



Festival Sponsor

À votre service...pour le soin de votre avenir. Depuis 1968.



THE RETIRED TEACHERS OF ONTARIO
LES ENSEIGNANTES ET ENSEIGNANTS
RETRAITÉS DE L'ONTARIO

Here for you now ... Here for your future. Since 1968.

Hotel Sponsor



Holiday Inn

GUELPH HOTEL & CONFERENCE CENTRE

Show Sponsors



PLAYWRIGHTS CANADA PRESS

Canada's foremost publisher of theatre books



Your money. Your way. Imagine that.



Ticket Sponsor

Shakespeare
Arms



Media Sponsors

Magic
106.1

1460 CJOY
Greatest Hits

Guelph Little Theatre Sponsors



Making a Difference

Ontario
Trillium
Foundation



Fondation
Trillium
de l'Ontario

An agency of the Government of Ontario.
Relève du gouvernement de l'Ontario.

WODL FESTIVAL 2013

In-Festival Awards

THE ELSIE THOMPSON MEMORIAL AWARD

Outstanding Performance by a Juvenile
(A Juvenile is anyone who has not reached his/her 18th birthday by March 1 of the current year.)

The Gift of ANNE WILSON

Awarded to Not Awarded
For _____

THE CALDER AWARD

Outstanding Performance by an Actress in a Supporting Role

The Gift of THEATRE WOODSTOCK

Awarded to Mary Ann Hucker (Cora)
For "Calender Girls" - Theatre Sarnia

THE PLAYERS GUILD AWARD

Outstanding Performance by an Actor in a Supporting Role

The Gift of THE PLAYERS GUILD OF HAMILTON

Awarded to Andrew Frey (Hammer)
For "Shorthanded" - Elmira Theatre Company

THE DOLLY NUNAN AWARD

Most Promising New Actor or Actress

The Gift of GUELPH LITTLE THEATRE

(A newcomer is a person who has not had a role, speaking or non-speaking, listed in the cast of characters, outside a school production. The list of characters shall not include chorus work or crowd scenes.)

Awarded to Not Awarded
For _____

THE REUBEN CARDINELL MEMORIAL AWARD

Best Co-ordinated Production

(The winner of this award is selected by the Host Group Festival Stage Manager)

The Gift of GUELPH LITTLE THEATRE

Awarded to Owen Sound Little Theatre
For "Kiss the Moon, Kiss the Sun"

THE SPANIK AWARD

Best Visual Production

The Gift of JOHN and MICHELLE SPANIK

Awarded to Theatre Burlington
For "Suddenly Last Summer"

THE HAROLD P. SELLERS MEMORIAL AWARD

Outstanding Technical Achievement

The Gift of THEATRE BURLINGTON

Awarded to Theatre Sarnia - "Calender Girls"
For Props

THE PAT & VINCENT MATHEWSON MEMORIAL AWARD

Outstanding Ensemble Work

The Gift of LYN MATHEWSON

Awarded to Theatre Ensemble/Theatre Intrigue
For "Orphans" Windsor

THE BONANNO AWARD

Outstanding Performance by an Actress in a Major Role

The Gift of LAWRENCE and FAY BONANNO

Awarded to Leanne MacLachlan (Holly)
For "Kiss the Moon, Kiss the Sun" Owen Sound

THE TERRY DOYLE MEMORIAL AWARD

Outstanding Performance by an Actor in a Major Role

The Gift of JOYCE DOYLE

Awarded to Matt Evans (Robert)
For "Kiss the Sun, Kiss the Moon" Owen Sound

SPECIAL ADJUDICATOR AWARDS

Special Awards of Merit selected by the Festival Adjudicator --
Two awards from each sponsor.

KAY MCKIE MEMORIAL AWARDS

Awarded to Carol Kennedy - Producing "Calender Girls"

Awarded to Bev Dietrich - Kathy Fahey Stage
Management of "Shorthanded" Elmira

The Gift of JOHN and ROSEMARY TAIT

Awarded to Alison Meyers-Gomez - Cameo

Awarded to Joe Brenner Andrew Frey

Dynamic Duo - Elmira
The Gift of TIM DAWDY

Awarded to "Suddenly Last Summer" - Ensemble Acting

Awarded to "Shorthanded" Ensemble Acting

THE ANNA GRAHAM MEMORIAL AWARD

Outstanding Direction

The Gift of LLOYD and CAROL LINDSAY & FAMILY

Awarded to Jeff Bastien, John Nabben

For Jaqueline Tinus, Kyla Chandler

Theatre Ensemble/Theatre Intrigue

THE D. PARK JAMIESON MEMORIAL AWARD

Best Production in Festival

The Gift of THEATRE SARNIA

Awarded to Theatre Ensemble/Theatre Intrigue

For "Orphans" Windsor

W.O.D.L. REGIONAL TROPHY

Presented by WODL to the Winner of the Best Production
(To be presented annually and kept by the winning group for one year.)

I will post a more detailed list when I get home