



OSHAWA MUSEUM

1450 Simcoe St. S.
Oshawa, ON L1H 8S8
oshawamuseum.org



EDUCATION CATALOGUE

Historical thinking in your hometown



FOR MORE INFORMATION, CONTACT JILL AT (905) 436-7624

ABOUT US

Welcome to the Oshawa Museum, where we strive to preserve and promote awareness and appreciation of the rich history of Oshawa. As the only local history museum in the area, we offer a unique and affordable venue for year-round educational programming.

Our museum is home to three beautifully restored Victorian houses - Robinson, Henry, and Guy House - all on their original foundations. These spaces are dedicated to fostering culture, diversity, and inclusion.

At the Oshawa Museum, we believe in incorporating various strands of Historical Thinking into all our programs to enhance engagement, interest, and creativity. Our programs are led by trained museum professionals and volunteers, ensuring a high-quality, interactive experience for you and your students. So come and visit us today!

ADMISSION & CANCELLATION POLICY

- Museum Visits - \$7.50 per student
- School Visits - \$7.50 per student
- Virtual Programs - \$50 per class
- Teacher-led Workshops - \$50

Teachers, educational assistants, support workers, and volunteers are admitted for free.

A mileage charge of \$0.75/km applies for museum-to-school visits when schools aren't in Oshawa.

Cancellation Policy: 48 hours notice is required to change or cancel your education program. Less than 48 hours notice will result in a \$100 cancellation fee to cover staffing costs incurred. There is no short-notice cancellation charge due to inclement weather, bus cancellations or school closures.



Henry House c. 1840

Guy House c. 1845

Robinson House c. 1856

Drive Shed 2009



Dress appropriately for the weather - hats, sunscreen, coats, rain/snow boots.

Supervisor ratios are 1:5 for primary grades and 1:10 for intermediate and senior grades.

PLANNING YOUR VISIT

Leave backpacks and snowpants at school.

On-site programs run for 90 - 120 minutes.

Book programs two weeks in advance.

Oshawa Museum maximum capacity is 60 students.

Bring phones and cameras to capture memories.



Use the washroom before visiting; availability is limited at the Oshawa Museum.

Large groups are divided into three to rotate through the houses.

We can adapt any program to suit the needs of you and your students.

All buildings have accessible entrances. The accessible washroom is in Guy House.

The Oshawa Museum welcomes service animals and assistive technology.

WHAT WE OFFER

School to
Museum Visits

Museum-led
Virtual
Programming

Museum to
School Visits

Teacher-led
Virtual
Workshops

Science
Curriculum-Based
Garden and
Habitat Programs

Professional
Programs from
Oshawa's Only
Local History
Museum.

Heritage
Demonstrations

Oshawa History
Themed Teacher
Workshops

On-line Exhibits
and Resources

Education Kits

WHAT TO EXPECT

On-Site

- Hands-on programs for all grades
- Accessible buildings
- Adaptive programming
- Changing exhibits
- Unique opportunities
- Beautiful park environment
- Professionally trained museum staff
- Groups of students tour museum spaces
- Led by the leading authorities on Oshawa's history
- Untold stories that represent diversity, inclusion and respect

At Your School

- Hands-on programs for all grades
- No hassle of organizing busses
- Adaptive programming
- Multi-media components
- Unique opportunities
- Held in the comfort of your classroom or library
- Professionally trained museum staff
- Led by the leading authorities on Oshawa's history
- Untold stories that represent diversity, inclusion and respect

"The kids were chatting up a storm after they left. We will definitely be back next year."

"Nostalgia incarnate!"

"You just walked in and out of a piece of history."

PROGRAMS

A Carrying Place: Archaeology and First Nations in Oshawa

Did you know that Oshawa has a rich history beyond General Motors? The MacLeod and Grandview First Nations archaeological sites in Oshawa, dating back to the 1400s, prove this. The staff will educate students about the ancestral Wendat and Mississauga of Scugog Island First Nations at the Oshawa Museum through the lens of archaeology.

During your visit, students experience the immersive "A Carrying Place" exhibit, which features a life-size cross-section of a longhouse. The exhibition delves into the fascinating reasons why the First Nations settled in this area, revealing their deep connection to local waterways and natural resources.

This background information compares and contrasts with early settlers' experiences. Students will create artefacts in the style of Wendat-style pottery and pipes using air-dry clay.

The program corresponds to the Grade 4 curriculum by having students make connections between aspects of early societies and how the environment influenced culture; it can be easily modified to suit all divisions.

At Your School

When you host this program at your school, we use educational artefacts and a PowerPoint presentation to provide context about the archaeological sites in the vicinity. The program also includes videos and stories to emphasize the importance of these sites from the 1400s.

As part of the education collection, students engage with archaeological artefacts including pipes, pottery, and bone tools, which they analyze and interpret using the social studies inquiry process.

This program is adaptable for all divisions and programs for younger students will include reading Indigenous-themed stories and discussing family connections and animals.

Cost: \$7.50 per student

Division: All

Location: At the Oshawa Museum or your school

A Day in the Life...

Scrubbing laundry on a washboard with the scent of Sunlight soap in the air, ironing with artefacts that weigh several pounds, caring for pretend animals, and planting seeds in soil help students understand and compare the challenges and roles of being a Victorian child with their own experiences. If the weather allows, the chores are done outdoors.

Later, the students will use educational items from the museum's School Days kit to gain a unique perspective on schooling in Oshawa during the 1900s. Slates, tin drinking cups, and period textbooks will clarify just how different the 19th century was for the students.

Finally, teachers can choose between a candle-making or butter-making demonstration to complete the program.

Note: Students will not visit Robinson House during this program unless teachers request to see the Indigenous Gallery or current exhibit.



Cost: \$7.50 per student

Division: Primary

Location: At the Oshawa Museum

A Day in the Life...At Your School

This program is easily transferrable to host in your classroom. In groups, students will 'meet' and carefully arrange the photos of the Henry family children in order of their birth years. As the activity progresses, we discuss how photos were taken in the past and settler chores based on age and gender and how this differs today. Students will examine various fascinating artefacts, including century-old butter moulds, cameras, lanterns, and schoolbooks!

Later, three Education Kits are set up as stations. These hands-on kits allow students to immerse themselves in a settler's life, transporting them back to an era without modern technology. By using a washboard and laundry dollies to scrub clothes by hand, dressing up in replica settler clothing and trying out a Victorian cellphone, students will understand what life was like for early settlers and how they adapted to their environment.

Education Kits: Around the House, Bonnets & Breeches, Communication, Curious About Cameras, Down in the Barn, Early Lighting, Education in Oshawa, The General Store and Toys & Games. More information about kits are available upon booking.

Cost: \$7.50 per student

Division: Primary

Location: At your school



Critical Thinking Using Objects

By exploring objects from the Oshawa Museum's vast educational collection of artefacts, students can engage with and acquire valuable knowledge and insights about our past and its relevance to our present society.

The educational collection boasts diverse items, from an intricate metal mechanical piggy bank, to a simple cup and ball game - handmade with real wood. A rotary telephone shows students how communication and technology have changed, from the weight of devices to the evolution of party lines.



Students will create advertisements for the artefacts to identify broader connections, fostering critical thinking skills while highlighting student's creativity and problem-solving and analytical skill development.

In addition, the program encourages the use of historical thinking concepts, including historical significance, continuity and change, and historical perspectives.

Cost: \$7.50 per student

Division: Junior, Intermediate, Senior

Location: At your school

Introduction to Primary Sources

Using primary sources from the Oshawa Museum's archival collection, students will gain a deeper understanding of the history of the Oshawa and Durham region.

This program is designed to be accessible through two channels: at your school or online with a teacher-led workshop.

Your school's schedule will determine the program's timing. The archivist will use a PowerPoint presentation for context, and students will fill out worksheets based on their assigned source, work in groups and explore fascinating historical documents while learning about the vital role of archivists and the difference between primary and secondary sources.

Examples of Primary Sources Include:

- 1918 plane crash image
- First Nation to white settler land transfer document
- Robson Tannery order form, from the Imperial Munitions Board
- Letter written to Thomas Henry
- WWI soldier's letter from 'Somewhere in Belgium,'

As a self-led workshop, teachers can work at their own pace. The OM provides links to the program through our Google Drive; students can work through the program on laptops.



Cost: **At your school** - \$7.50 per student

Virtual (with OM staff instruction) \$50 per class, **Teacher-led** \$50

Division: Intermediate, Senior

Location: At your school, Virtual

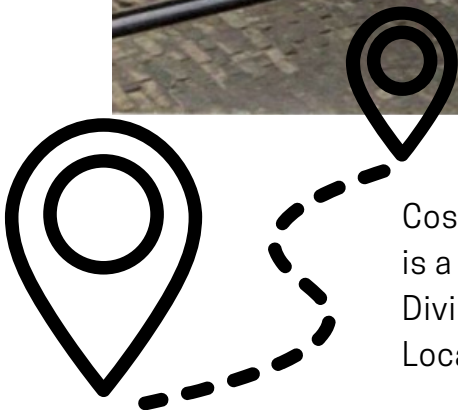
Leaving Home, Finding Home in Oshawa: Stories of Displaced Persons & Immigration

Oshawa's rich history of diversity has attracted many families to make their homes here, particularly after the Second World War.

As Eastern European families sought refuge from their war-torn homes, Oshawa experienced a surge in industrial growth, resulting in a unique convergence of language and culture that appealed to newcomers seeking a better life.

Using your school's technology, students move through an engaging passport-themed scavenger hunt, using the ['Leaving Home, Finding Home in Oshawa'](#) website and the [virtual tour](#) to meet participants from the oral history project that inspired the exhibit. Primary source documents and photos underscore the urgency of fleeing Europe's post-Nazi regime.

This is a free teacher-led program for your classes.



Cost: **Free.** To have Oshawa Museum staff facilitate this program, there is a \$7.50 per student.

Division: Junior, Intermediate

Location: At your school

Letters from the Trenches: From the William James Garrow Collection

The Oshawa Museum once received a donation of almost two dozen letters to and from William Garrow. Garrow was a young man from Oshawa who enlisted in WWI when he was twenty-one years old.

Through a captivating slideshow, students will see letters and documents from Garrow's life in the trenches and on the move, providing a unique perspective that can't be found in any textbook.

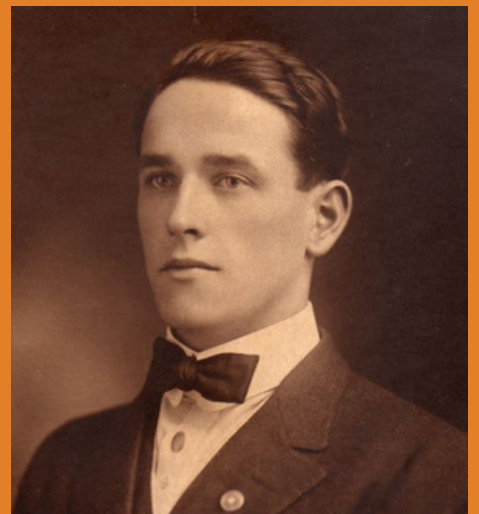
Additionally, the slideshow compares Garrow's experiences to those of three other local citizens of Oshawa: a white nursing sister, a Black soldier, and a drafted white soldier.

This comparison highlights how racism, classism, and sexism affected their time overseas.

Cost: \$7.50 per student

Division: Intermediate, Senior

Location: At your school



Local Traditions

At the OM, we know that many Canadians do not celebrate Christmas. Local Traditions uses Henry House - decorated for a traditional Victorian Christmas, as a background to compare and contrast how students spend the holidays, how they decorate their homes, and what their winter pastimes are, providing a global perspective.

Teachers can book this program during November's and December's last weeks. It is ideal for Grade Two students and can be adapted for any primary or junior grade.

The students will experience the smells of pine, cloves, and lamp oil and see antique Christmas gifts that were part of the Irish and Victorian traditions that were significant in the Henry family celebrations.

Students will not visit Robinson House during this program unless teachers request to see the Indigenous Gallery or current exhibit.

Before booking, please choose one of the activities listed to the right.



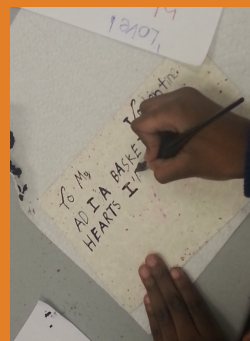
Cost: \$7.50 per student

Division: Primary

Location: At the Oshawa Museum

Inquiry: Students participate in a historical activity - "shopping" for their family's gifts and dinner by browsing through a 1901 Eaton's catalogue of household items, groceries, clothing and toys with a budget of only \$20. This activity involves math skills, such as adding up prices and language skills, such as reading catalogue contents.

The goal is for students to gain insights into historical perspectives (why the prices are so low,) continuity, and change (what items are still available) by comparing changing prices, clothing styles, and children's interests.



Writing: Students will learn to use traditional writing tools such as straight pens, ink, and sealing wax to write about their favourite winter or family experiences.

The OM will provide prompts to guide their writing. Younger students can draw pictures, while older students can try their hand at cursive writing.

Through this activity, students can immerse themselves in the same experiences as those in the past.

Meet the Museum

Discover the fascinating world of museums at the Oshawa Museum. Students will gain insight into the various roles that contribute to a museum's functioning and the special rules we use. The tour includes exploring the different homes and engaging in a fun craft activity using recycled materials inspired by the Victorian era. Victorians were the true pioneers of 'reduce, reuse and recycle'!

If you choose, teachers can further enhance the learning experience in their classrooms by renting and interacting with 3 to 4 Education Kits, using them to create different stations. A list of available options is in the Education Kit section.

This program is tailored to Kindergarten and elementary school classes, making it the perfect educational experience for young learners.



Cost: \$7.50 per student

Division: Primary

Location: At the Oshawa Museum or at you school



Oshawa's Black History: One Family's Journey

Students will meet several generations of the Dunbar, Andrews and Pankhurs families in this half-day program. Samuel - a soldier in the United States Revolutionary War, Wealthy - a woman who travelled over 800 kilometres - mostly on foot, to her new home; Marquis de Lafayette - her small son who shared a big name; and Margaret - who proved that love can conquer racism.

Using multimedia elements like antique photos, audio interviews, newspaper articles, census records, maps and military forms, students will construct biographies for various family members before sharing them with the class.

 <p>One Family</p>	<p>Oshawa Museum staff will discuss the historical significance of Oshawa's early Black settlers and why we are telling their story. Students learn about bias and discrimination in census records and the historical injustice of racism in local newspapers.</p>		
 <p>Seven Generations</p>	 <p>Primary Sources</p>		
 <p>Racism in Oshawa</p>	 <p>Settlement Patterns</p>	 <p>Museum to School Visits</p>	
 <p>Early Black Settlers</p>	 <p>Oshawa History Themed Teacher Workshops</p>	 <p>On-line Exhibits and Resources</p>	 <p>Compare and Contrast</p>

Cost: \$7.50 per student
 Division: Intermediate, Senior
 Location: At your school

Stories From the Homefront

Do you remember the great toilet paper shortage of 2020? What about trying to get cleaning products and hand sanitizer? Students will use these memories and experiences to imagine how rationing affected people on the homefront during the Second World War.

Explore the fascinating world of wartime rationing by diving into ration books and advertising and discovering how people coped with shortages of coffee, tea, sugar, and meat; then, create a budget and shopping list to make a birthday meal with the appropriate coupons.

First-person accounts from people living and working in Oshawa give students valuable insight into the past and illustrate the impact of rationing on families and communities.

Additionally, through group discussions and artefact analysis, students compare past and present family celebrations, connect to recent rationing practices during the COVID-19 pandemic, and reflect on how rationing impacted their families.

A contextual illustrated presentation serves as a backdrop for this program. The Oshawa Museum will supply the cookbook and ration book files for teachers to print upon confirmation.

Cost: \$7.50 per student

Division: Intermediate, Senior

Location: At your school

**RATION
BOOK 2**



**CARNET DE
RATIONNEMENT 2**

Name
from

Winifred Mark

Street Address or R.R. No.

et rue ou R.R. No.

393 King E.

Town

village

Oshawa Ont

Serial Number

PH-189936

No de Série
(avec lettres)

Age if under 16

Age, si moins de 16 ans

ISSUED BY THE RATION ADMINISTRATION W. P. T. B.

ÉMIS PAR LE SERVICE DU RATIONNEMENT C. B. C. T. C.

WWI Timeline Workshop

Examples of Primary Sources Include:

- Attestation papers
- Death certificates
- Census records
- Draft recruitment documents
- Photos
- Newspaper articles
- Personal drawings
- War diaries

May 4, 1915



According to the attestation paper, Evans had previously served with the 19th Alberta Mounted Rifles. This was a cavalry unit.

Evans enlisted with the 4th Canadian Mounted Rifles, a cavalry unit that was part of the Canadian Infantry.

Comment

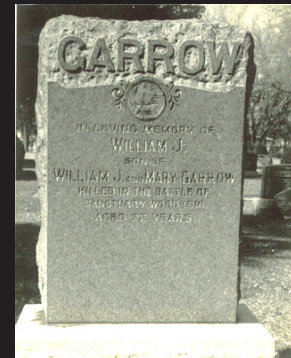
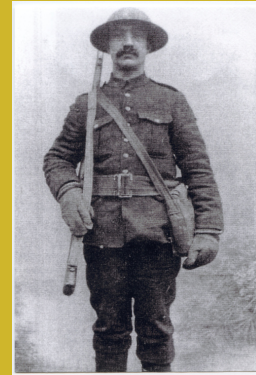
Did you know?

May 4, 1915 John Evans enlisted with the Canadian Overseas Expeditionary Force in Toronto. At the time he enlisted, he was living in Oshawa and worked as auto tire builder.

Comment

REMARKS:
Emb. Montreal by (S.S. Metagama) Oct 14/15
Auth. No. 649-713

As a self-led workshop, teachers can work at their own pace. The Oshawa Museum provides links to the program through Google Drive; students will work through the program on laptops.



Cost: **At your school** - \$7.50 per student

Virtual (with OM staff instruction) \$50 per class, **Teacher-led** \$50

Division: Intermediate, Senior

Location: At your school, Virtual

EDUCATION KITS

The Oshawa Museum staff has curated a variety of historical and educational kits that cater to the Ontario Social Studies curriculum and promote critical thinking, problem-solving, and creativity.

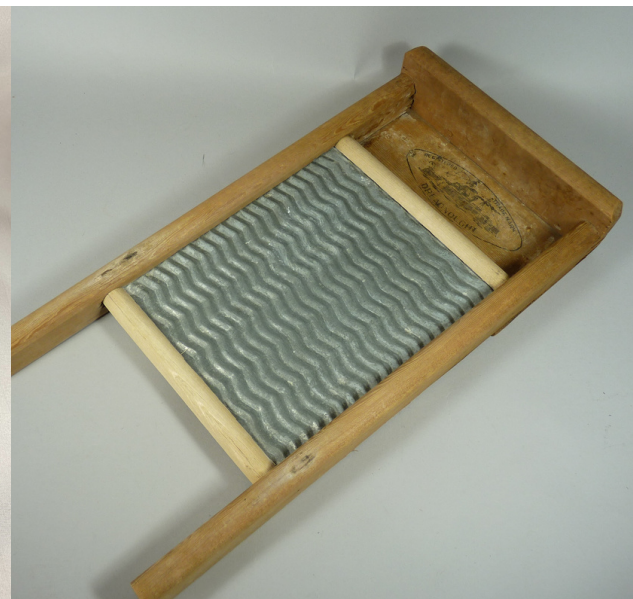
Our team has carefully selected the artifacts in these kits to provide insight into pioneer life, Victorian culture, and other relevant topics.

Children learn best through hands-on experiences, so our kits offer a unique opportunity for students to immerse themselves in history.

Teaching about the past can help children better understand historical processes and their impact on our present.

- Rent kits for \$25.00 per week.
- Maximum rental period of four weeks.
- Pick-up and drop-off between 8 a.m. and 4 p.m., Monday - Friday, and 12 - 4 p.m. on Sundays.
- Late fees of \$5.00 per day apply unless the kit is returned by the agreed-upon date.

All kits have detailed instructions and artifact descriptions to ensure a smooth and educational experience.



Over 100
artefacts to
in the
collection!

Archaeology in
Oshawa

Around
the
House

Bonnets &
Breeches

Communication

Curious
About
Cameras

Down
in the
Barn

Early
Lighting

Education
in
Oshawa

The General
Store

Toys & Games

ONLINE RESOURCES

All of the links and resources provided below are free of charge. The Oshawa Museum holds the copyright for all information and photos. If you intend to use any of the content, kindly seek permission from the Museum before doing so.

Oshawa Museum
www.oshawamuseum.org

Discover the offerings of Oshawa's sole local history museum through the Virtual Collection, Archival Collections' research materials, e-publications, and exhibit books. Visit the website to learn more.

Oshawa Historical Society
www.oshawahistoricalsociety.org

The Oshawa Museum, located in the picturesque Lakeview Park, is managed by the Oshawa Historical Society. By becoming a member of the society as an educator, you gain priority access to exhibit openings, free tours of the museum, and the monthly Speaker Series. Furthermore, you can contribute to preserving the rich local heritage as a valuable partner.

Oshawa Museum Blog
oshawamuseum.wordpress.com

The Oshawa Museum's blog has been active for over a decade and boasts over 600 posts. Its content covers various topics, including industries, soldiers, women and children, street names, and notable events from the past and present. The blog is just one of the ways we aim to share Oshawa's unique stories with the world.

Discover Historic Oshawa
discoverhistoricoshawa.com

Experience a unique approach to discovering historic Oshawa, showcasing notable locations from our community's past and present. With the help of searchable maps, students can find something fresh and exciting each time they explore.

ONLINE EXHIBITS

Archaeology in Oshawa – Explore five of Oshawa's most fascinating archaeological sites, including uncovering two First Nations villages and relocating two cemeteries.

Lakeview Park 100 - The Lakeview Park 100 exhibit delves into the park's history, showcasing original research conducted by OM staff that explores the area's past, including pavilions, rides, industries and animals.

Covid 19 in Oshawa – Discover how COVID-19 has impacted the museum, including changes to operations, collections, and staff, through insights shared by museum staff and Oshawa citizens.

Oshawa Immigration Stories – This exhibit documents the resettlement of displaced persons after the Second World War with oral histories, photos and documents.

Education in Oshawa: Olive French – The Education in Oshawa exhibit is based on Olive French's research into the local education system, covering topics such as teachers, schools, and the school board from 1867 - 1967.

From Ship to Shore: Exploring Oshawa's Relationship with Lake Ontario - For centuries, the waterways of the Oshawa Creek and Lake Ontario provided Indigenous peoples and settlers with a natural navigation system, which became the backdrop for the commercial, agricultural, and residential development that would later become the city of Oshawa.

Industry in Oshawa - Oshawa is a city with a rich history of industrial growth. The development of manufacturing establishments in the area sparked comparisons to Manchester, England. Oshawa has expanded to become a thriving urban environment since its early settlement. While Oshawa is known for its automobile sector, agricultural, foundry, tannery, shipping, and railway industries thrived long before the McLaughlins were born.

Letters from WWI Trenches - William Garrow's series of letters written home offer a rare perspective from the trenches of WWI. These letters, telegrams, and notifications of his death have been preserved for 100 years, making this primary source-based exhibit a unique glimpse into history.

Discover Historic Oshawa - This exhibit highlights remarkable places from Oshawa's past and present, showcasing the city's rich history and vibrant community.

ES Shrapnel Sketches - As used in Thomas Conant's non-fiction book, Upper Canada Sketches, the art of ES Shrapnel provides insight into Canada's beginnings and the environmental livelihood between settlers and wildlife. Delve deeper into the meaning behind Shrapnel's impactful visual documentation with this exhibit.

CONTACT US

Jill Passmore - Visitor Experience

Lisa Terech - Community Engagement

Hours of Operation

Monday: By appointment only

Tuesday - Friday: 8 am - 4 pm

Saturday: By appointment only

Sunday: 12 - 4 pm

Location

1450 Simcoe Street South

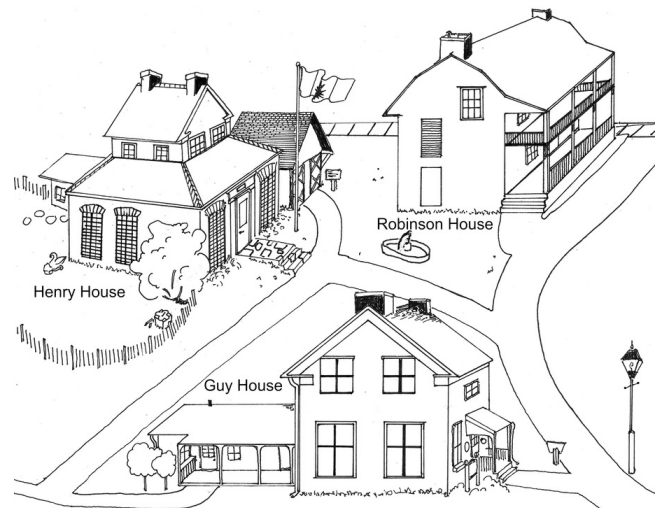
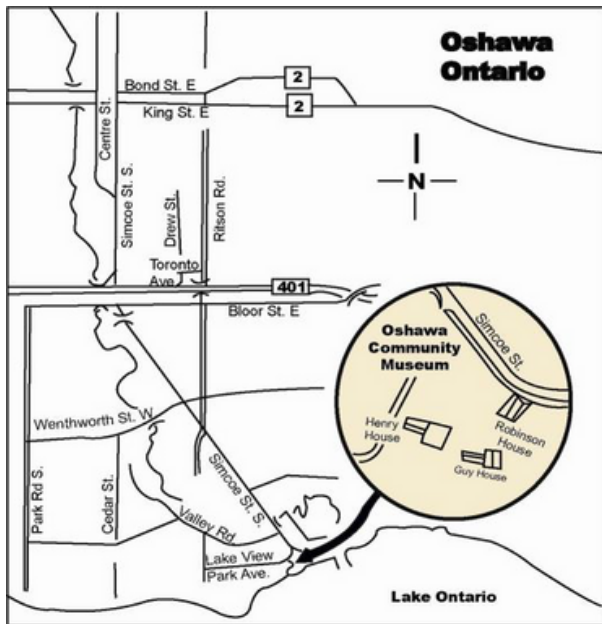
Guy House, Lakeview Park

Oshawa, Ontario

L1H 8S8

Phone: 905-436-7624 x. 106

Website: www.oshawamuseum.org



**OSHAWA
MUSEUM**

— Home to our History —

