

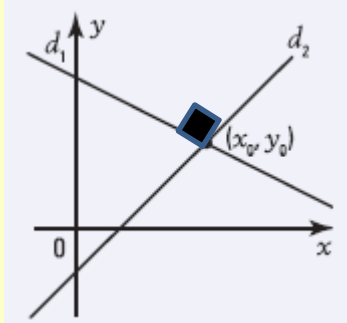
## Chapitre 6.1

### Perpendiculaire

$$y = 2x - 1$$

$$y = -\frac{1}{2}x + 5$$

Une solution



### Parallèles distinctes

$$y = 2x + 3$$

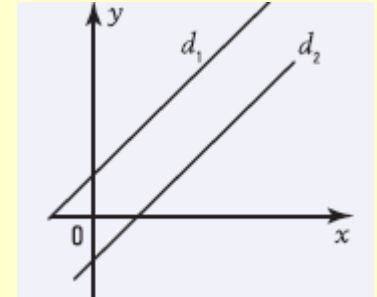
$$y = 2x - 4$$

$$2x + 3 = 2x - 4$$

$$3 \neq -4$$

Nombres  
différents

Aucune solution

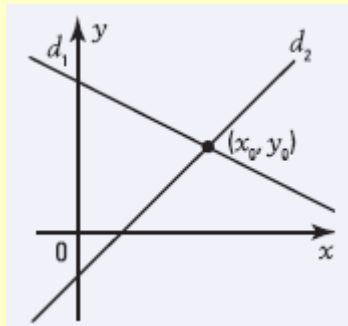


### Sécante

$$y = 2x - 1$$

$$y = -2x + 5$$

Une solution



### Parallèles confondues

$$y = 2x - 1$$

$$y = 2x - 1$$

$$2x - 1 = 2x - 1$$

$$0 = 0$$

Infinité de solutions

