

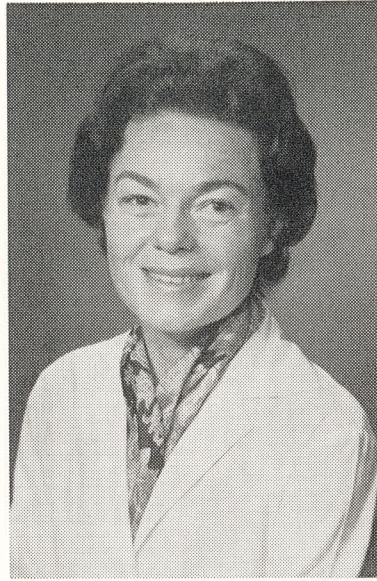


*Dominion Drama Festival*

WESTERN ONTARIO REGION

WOODSTOCK COLLEGIATE AUDITORIUM, WOODSTOCK, ONT.

APRIL 6th to 10th, 1965



I extend to you a very warm welcome to our Festival. It has been nine years since we were last in Woodstock. Many of us recall glorious memories of that Festival, and are confident that this too will be a year to remember.

To the five competing groups sent to us by Mr. Stanley Richards, as representing the best in our region, we wish every success.

Above all, however, we are happy to be represented by every group in our widespread region.

Nora Winter,  
*President, W.O.D.L.*



# The Festival

The Dominion Drama Festival was inaugurated by the initiative of His Excellency the Right Honourable, the Earl of Bessborough, Governor-General of Canada, in October 1932. (The operation of the Festival was discontinued during World War II).

The Festival, which functions under a Royal Charter, was first held in Ottawa in April 1933, and has since become a national institution which commands widespread interest and recognition.

In 1960, the Festival was favoured with the major sponsorship of the Canadian Association of Broadcasters, an organization which shares the Festival's interest in the dramatic art.

Following the system of grouping Canada's fourteen regions into eight zones, as established in 1959, the Governors of the Dominion Drama Festival once again have retained the services of Canadians to adjudicate the Regional Festivals and to select the winning play of each zone. These eight winners will be invited to participate in the Final Festival which will be held May 24-29, 1965, in Brockville.

“and now, a word from our sponsor . . . ”

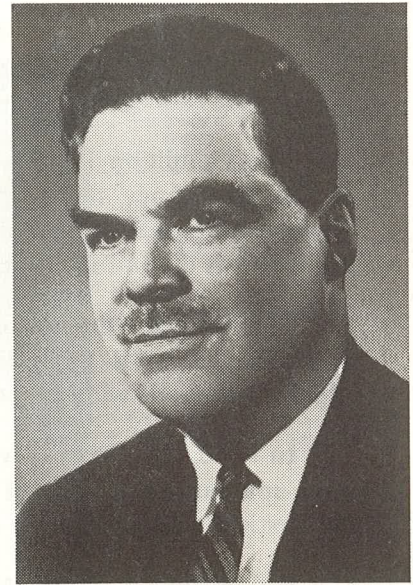
**D**RAMA through the centuries has interpreted both  
our past and our present.

This, the Dominion Drama Festival has accomplished in  
Canada—and accomplished in both of Canada's official languages.

Whether the play is *Tartuffe* or *Harvey*, it is part of our  
cultural heritage—part of our struggle to understand ourselves  
and our environment.

The Canadian Association of Broadcasters, as the major  
sponsor of the Dominion Drama Festival, is proud of its part in  
this development of Canadian drama.

Don Jamieson, *President,*  
*The Canadian Association*  
*of Broadcasters.*



## The Adjudicator

Dennis D. Sweeting has been having a love affair with the theatre since his undergraduate days at the University of Manitoba, where he studied under Judith Evelyn.

Writer, actor, stage manager, director, Mr. Sweeting has filled all these roles in his many years of close association with Canadian amateur theatre groups.

Yet Mr. Sweeting is not an amateur in the theatre. He organized Equity, the professional actors' association, in Toronto. He has lectured on various phases of the theatre. He instructed the new course in play direction at the University of Waterloo this past summer.

One of Toronto's leading theatrical critics, Mr. Sweeting's C.B.C. radio programme, "*Theatre Anyone?*" has been on the air for four consecutive years.

Mr. Sweeting has adjudicated a number of one act plays and other dramatic events. That he has been successful as an adjudicator is indicated by his appointment as Adjudicator of the Dominion Drama Festival, Western Ontario Region.



Tuesday, April 6, 1965 - 8:00 p.m.

Sarnia Little Theatre

presents

# The Miracle Worker

by William Gibson

Produced by special arrangement with Samuel French Inc.

Directed by Edmund Taylor

## THE CAST

(IN ORDER OF APPEARANCE)

A DOCTOR	-	-	-	-	-	-	-	-	-	O. Brooke
KATE	-	-	-	-	-	-	-	-	-	Betty Richardson
KELLER	-	-	-	-	-	-	-	-	-	John Lapsley
HELEN	-	-	-	-	-	-	-	-	-	Susan Shillingford
MARTHA	-	-	-	-	-	-	-	-	-	Erica Kohlmeier
PERCY	-	-	-	-	-	-	-	-	-	Michael McKegney
AUNT EV	-	-	-	-	-	-	-	-	-	Helen Brooke
JAMES	-	-	-	-	-	-	-	-	-	Gene McLaughlin
ANAGNOS	-	-	-	-	-	-	-	-	-	Charles Perrie
ANNIE SULLIVAN	-	-	-	-	-	-	-	-	-	Valerie Hadley
VINEY	-	-	-	-	-	-	-	-	-	Beverly Brewster
BLIND GIRLS	-	-	-	-	-	-	-	-	-	Kim Taylor, Nina Ryan, Rosemary Dunsmore, Florence Sherwood, Leslie Taylor, Karen Linder, Barbara Wiggers
SERVANT	-	-	-	-	-	-	-	-	-	Betty Edmonds

## THE PLAY

Mr. Gibson's play, in three acts, tells the story of Helen Keller. The time is the 1880's, and the scene is mainly the Keller homestead, and briefly the Perkins Institute for the Blind in Boston.

Miss Keller, born in 1880, and a great American author and lecturer, was blind and deaf through illness at age nineteen months. She was educated by Annie from 1887 to 1936, and in 1902 wrote "The Story of My Life", and later in 1938 published Helen Keller's Journal.

INTERMISSIONS—10 minutes

## PRODUCTION STAFF

ASSISTANT DIRECTOR	-	-	-	-	-	-	-	-	-	Joan Ennett
STAGE MANAGER	-	-	-	-	-	-	-	-	-	Sam Hunter
Assistants	-	-	-	-	-	-	-	-	-	Duncan Cunningham, John Wilson, Steve Williams
LIGHTING MASTER	-	-	-	-	-	-	-	-	-	Fred Hadley
Assistants	-	-	-	-	-	-	-	-	-	John De Vries, Dave Guthrie, Dave Clift
WARDROBE SUPERVISOR	-	-	-	-	-	-	-	-	-	Alice Walent
Assistants	-	-	-	-	-	-	-	-	-	Nan Cunningham, Hazel Jones
MAKE-UP MISTRESS	-	-	-	-	-	-	-	-	-	Millie Rath
Assistants	-	-	-	-	-	-	-	-	-	Naomi Cohen, Norma Dearing, Betty Edmonds, Eila Kuosmanen, Joan Thompson, Margaret Weichula
PROPERTIES MISTRESS	-	-	-	-	-	-	-	-	-	Eunice Taylor
Assistants	-	-	-	-	-	-	-	-	-	Dorothy Clifton, Pamela Shillingford, Marcia Lampman
SOUND CO-ORDINATION	-	-	-	-	-	-	-	-	-	Hugh Borchardt, Jim Robinson, Ron Leroux
BOOK HOLDER	-	-	-	-	-	-	-	-	-	Sheila Hill
PRO (SLT)	-	-	-	-	-	-	-	-	-	Osborne Brooke

Festival regulations require that no one be seated after the play has started until the First Intermission.

The Adjudicator will comment on the play at the close of the presentation.

Wednesday, April 7, 1965 - 8:00 p.m.

The St. Thomas More Players

*present*

# The Imaginary Invalid

Adapted from Molière by Miles Malleston

Directed by Reverend John Hulley

## THE CAST

(IN ORDER OF APPEARANCE)

MONSIEUR ARGAN	-	-	-	-	-	-	-	-	Bill Wade
TOINETTE	-	-	-	-	-	-	-	-	Betty Droughan
ANGELICA	-	-	-	-	-	-	-	-	Peggy Johnston
BÉLINE	-	-	-	-	-	-	-	-	Mary Moore
MONSIEUR BONNEFOY	-	-	-	-	-	-	-	-	Gordon Bayliss
CLEANTE	-	-	-	-	-	-	-	-	Tom Mackan
DR. DIAFORUS	-	-	-	-	-	-	-	-	Peter Cheeseman
DR. THOMAS DIAFORUS, his son	-	-	-	-	-	-	-	-	Phil Robson
LOUISE	-	-	-	-	-	-	-	-	Sheila Cosentino
MONSIEUR BÉRALDE	-	-	-	-	-	-	-	-	Martin Galvin
THE APOTHECARY	-	-	-	-	-	-	-	-	Frank Spezzano
DR. PURGON	-	-	-	-	-	-	-	-	Paul Hunter

## ACT ONE

The sitting room of Monsieur Argan's house in Paris, 1674

## ACT TWO

The same, immediately following.

## ACT THREE

The same, a little later.

INTERMISSIONS—10 minutes

## PRODUCTION STAFF

PRODUCED BY MIKE HUNTER

SET DESIGN	-	-	-	-	-	-	-	-	Norma Walsh
Assistant	-	-	-	-	-	-	-	-	Rosa Thompson
PRODUCTION CO-ORDINATOR	-	-	-	-	-	-	-	-	Margaret Stevenson
STAGE MANAGER	-	-	-	-	-	-	-	-	Bob McPhee
Assistant	-	-	-	-	-	-	-	-	Barry Snow
COSTUME DESIGN	-	-	-	-	-	-	-	-	Margaret Stevenson
COSTUME MISTRESS	-	-	-	-	-	-	-	-	Lorraine Hunter
Assistants	-	-	-	-	-	-	-	-	Noreen Graham, Eunice Coletti, Nancy Urech
WARDROBE MISTRESS	-	-	-	-	-	-	-	-	Madeline De Paul
PROPERTIES	-	-	-	-	-	-	-	-	Dorothy Sayers
Assistants	-	-	-	-	-	-	-	-	Dorothy Moorcroft, Pauline Baker, Bob Stevenson, Ruth Elley, Bev Taylor, Frank Spezzano, Barry Jessop, Gerry Gauthier
SET CONSTRUCTED & PAINTED BY	-	-	-	-	-	-	-	-	Eric Baker, John Thompson, Maureen Walsh, Dale Hyde-Clark, Nan Johnston, Geoff Gauthier, Marsha Cox, Peggy Johnston, Don Norwood
LIGHTING DESIGN	-	-	-	-	-	-	-	-	Peter Emerson
Assistant	-	-	-	-	-	-	-	-	Bob Smart
MAKE-UP SUPERVISOR	-	-	-	-	-	-	-	-	Maureen Webber
Assistant	-	-	-	-	-	-	-	-	Ann Gauthier
PROMPTER	-	-	-	-	-	-	-	-	Phylis Melko
SOUND	-	-	-	-	-	-	-	-	Glen Jones

Festival regulations require that no one be seated after the play has started until the First Intermission.

The Adjudicator will comment on the play at the close of the presentation.

Thursday, April 8, 1965 - 8:00 p.m.

Owen Sound Little Theatre

*presents*

# Bus Stop

by William Inge

By arrangement with Dramatists Play Service Inc.

Directed by Velma Mitges

## THE CAST

(IN ORDER OF APPEARANCE)

ELMA DUCKWORTH, a waitress	- - - - -	Carol Gray
GRACE HOYLARD, owner of restaurant	- - - - -	Shirley Berch
WILL MASTERS, a sheriff	- - - - -	Mac Gollert
CHERIE, a chanteuse	- - - - -	Ruth Gorbet
DR. GERALD LYMAN, a former college professor	- - - - -	Bob Sandow
CARL, a bus driver	- - - - -	Barry Stewart
VIRGIL BLESSING, a ranch hand	- - - - -	Herb Rutherford
BO DECKER, a young rancher cowboy	- - - - -	Richard Howard

ACT ONE                      A morning in early March.

ACT TWO                     A few minutes later.

ACT THREE                  Early morning about five o'clock.

Time: The present.

INTERMISSIONS—10 minutes

## PRODUCTION STAFF

PRODUCER	- - - - -	Herb Berch
STAGE MANAGER	- - - - -	Vince Mathewson assisted by Pat Mathewson
ASSISTANT STAGE MANAGERS	- - - - -	Ruby Moffatt, Sue Barthel
SET DESIGN	- - - - -	Sharon Hilts
SET CONSTRUCTION MANAGER	- - - - -	Maurice Hewett
SET CONSTRUCTION CREW	- - - - -	Herb Berch, Reg. Firby, Marg Cathrae, Lois Powell, Sharon Hilts, Sam Napier, Shelagh Brown, Alice Myrfield
LIGHTING	- - - - -	Pat Allan, Peter Lemon
SOUND	- - - - -	Marg Hewett
PROPERTIES	- - - - -	Dorothy Wakeford
HAND PROPERTIES	- - - - -	Jose Mills, Merny Parker
WARDROBE	- - - - -	Wendy McGruer
MAKE-UP	- - - - -	Marg Hope, Ruth McPherson, Audrey Harris, Peggy Keating

Festival regulations require that no one be seated after the play has started until the First Intermission.

The Adjudicator will comment on the play at the close of the presentation.



Friday, April 9, 1965 - 8:00 p.m.  
The Players' Guild of Hamilton Inc.  
*presents*

# A Man for all Seasons

by Robert Bolt

By special arrangement with Samuel French  
(Canada) Limited

Directed by Sid Emberley      Produced by Elsie Thomson

## THE CAST

(IN ORDER OF APPEARANCE)

THE COMMON MAN	- - - - -	Stephen Weston
SIR THOMAS MORE	- - - - -	Michael Bradshaw
MASTER RICHARD RICH	- - - - -	Dave Powers
THE DUKE OF NORFOLK, Earl Marshal of England	- - - - -	Don Garstin
LADY ALICE MORE, Sir Thomas' wife	- - - - -	Dorothy Foster
LADY MARGARET MORE, Sir Thomas' daughter	- - - - -	Sheila Zack
CARDINAL WOLSEY	- - - - -	Ron Weston
THOMAS CROMWELL	- - - - -	Ian Downie
SIGNOR CHAPUYS, The Spanish Ambassador	- - - - -	Jace Vander Veen
WILLIAM ROPER	- - - - -	Ted Shier
KING HENRY the EIGHTH	- - - - -	Bill Holland
A WOMAN	- - - - -	Vi Pedler
THOMAS CRANMER, Archbishop of Canterbury	- - - - -	Tony Hargreaves

## ACT ONE

Scene 1: Sir Thomas More's house at Chelsea  
Scene 2: Wolsey's apartment at Richmond  
Scene 3: The riverside at Richmond  
Scene 4: Sir Thomas More's house  
Scene 5: Hampton Court Palace  
Scene 6: The garden of Sir Thomas More's house  
Scene 7: An Inn

Time: The Sixteenth Century

## ACT TWO

Scene 1: Sir Thomas More's house  
Scene 2: Cromwell's apartment at Hampton Court  
Scene 3: Sir Thomas More's house  
Scene 4: Cromwell's apartment at Hampton Court  
Scene 5: The riverside at Hampton Court  
Scene 6: The Tower of London  
Scene 7: The same  
Scene 8: The Hall of Westminster  
Scene 9: Tower Hill

INTERMISSIONS—10 minutes

## PRODUCTION STAFF

ASSISTANT PRODUCER	- - - - -	Nancy Happell
STAGE MANAGER	- - - - -	Joe Kneisz
ASSISTANT STAGE MANAGER	- - - - -	Frances Shaw
SET DESIGN	- - - - -	Dani Podetz
COSTUMES	- - - - -	Barbara Johnston
PROPERTIES	- - - - -	Frances Koziuk
LIGHTING	- - - - -	John Beckett
SOUND	- - - - -	Colin Shakespeare, Sheila Thompson
SET CONSTRUCTION	- - - - -	Helmut Richter
MAKE-UP	- - - - -	Hilda Healey, Helen Binks
SCRIPT ASSISTANT	- - - - -	Thelma Mitcham

Festival regulations require that no one be seated after the play has started until the First Intermission.

The Adjudicator will comment on the play at the close of the presentation.



Saturday, April 10, 1965 - 8:00 p.m.

K.-W. Little Theatre

*presents*

# Bousille and the Just

by Gratien Gélinas

By special arrangement with the publishers  
Clarke, Irwin and Co. Ltd.

Directed and Produced by  
G. W. Koski and Alan Murray

## THE CAST

(IN ORDER OF APPEARANCE)

BELLBOY -	-	-	-	-	-	-	-	-	-	Malcolm Cock
PHIL VÉZINA -	-	-	-	-	-	-	-	-	-	G. W. (Bill) Koski
HENRI GRAVEL -	-	-	-	-	-	-	-	-	-	Rick Crossey
AUORE VÉZINA -	-	-	-	-	-	-	-	-	-	Anna Ferguson
BOUSILLE -	-	-	-	-	-	-	-	-	-	Terry Judd
MOTHER GRAVEL -	-	-	-	-	-	-	-	-	-	Ruth Zinck
NOELLA GRAVEL -	-	-	-	-	-	-	-	-	-	Janet Keating
THE LAWYER -	-	-	-	-	-	-	-	-	-	Alan Murray
BROTHER THÉOPHILE -	-	-	-	-	-	-	-	-	-	Ralph Snyder
COLETTE RICHARD -	-	-	-	-	-	-	-	-	-	Jeanne Rogers

The play takes place in a cheap room on the top floor of a second rate hotel near the court house in Montreal.

ACT ONE Scene: Morning of the first day about 8:30 a.m.

ACT TWO Scene: Evening of the same day about 6:00 p.m.

ACT THREE Scene 1: Morning of the second day about 9:00 a.m.

Scene 2: Afternoon of the same day about 4:30 p.m.

Time: The present

INTERMISSIONS—10 minutes

## PRODUCTION STAFF

ASSISTANT DIRECTOR -	-	-	-	-	-	-	-	-	Bev. Gerry
SET DESIGN -	-	-	-	-	-	-	-	-	Nancy-Lou Patterson
STAGE MANAGER -	-	-	-	-	-	-	-	-	Doug Maugham
SET CONSTRUCTION -	-	-	-	-	-	-	-	-	Doug Maugham, Bob Rogers, Jim Beechey, Dennis Scherer
PROPERTIES -	-	-	-	-	-	-	-	-	Ruth Anderson, Cliff Schwartz
COSTUMES -	-	-	-	-	-	-	-	-	Elsie Bellefontaine, Pam Rigby
MAKE-UP -	-	-	-	-	-	-	-	-	Helga Bartels, Earl Stieler, Roy Mann
HAIR STYLING -	-	-	-	-	-	-	-	-	Ron Schell, House of the Orient, Kitchener
LIGHTING -	-	-	-	-	-	-	-	-	Terry Weldon, Ken Usher
SOUND -	-	-	-	-	-	-	-	-	Jim Beechey

Festival regulations require that no one be seated after the play has started until the First Intermission.

The Adjudicator will comment on the play at the close of the presentation.

# Pre-Festival Awards

Awarded in the Preliminaries to the WODL Festival  
(to those not entered in the final festival).

## CKNX-WINGHAM AWARD

The gift of Radio and TV Station CKNX, Wingham, to  
the best performance by a supporting actress.

*Winners:* Winnifred Garrett—Simcoe  
Marianne Worsfold—Woodstock

## CKNX-WINGHAM AWARD

The gift of Radio and TV Station CKNX, Wingham, to  
the best performance by a supporting actor.

*Winners:* John Osborne—Welland  
Michael Thompson—Welland

## CFPL-RADIO AWARD

The gift of Radio Station CFPL, London, to the best  
performance by an actress.

*Winner:* Ivy Lacey—Simcoe

## PHELPS AWARD

The gift of Mr. F. N. Phelps, London, to the best per-  
formance by an actor.

*Winner:* Mayer Epstein—London

## CFPL-TV AWARD

The gift of Station CFPL-TV, London, for the best visual  
presentation of a production, having regard to the ability  
of the group to surmount difficulties encountered on stages  
of different size and equipment.

*Winners:* Georgetown Little Theatre  
Goderich Little Theatre

## CKCO-TV AWARD

The gift of Station CKCO-TV, Kitchener, for the director  
of the best-directed play.

*Winner:* Frank Gorbet—Welland



# Festival Awards

Awarded in the WODL Festival

## RADIO-SIMCOE AWARD

The gift of Radio Station CFRS, Simcoe, to the best performance by a supporting actress.

Winner: Shirley Berch Owen Sound

## RADIO-SIMCOE AWARD

The gift of Radio Station CFRS, Simcoe, to the best performance by a supporting actor.

Winner: Bill Koski K-W

## BRICKENDEN AWARD

The gift of Mrs. G. A. P. Brickenden, Simcoe and London, for the best performance by an actress.

Winner: Valerie Hadley Samia

## JORDAN MEMORIAL AWARD

The gift of Mrs. A. D. Jordan, London, for the best performance by an actor.

Winner: Mike Bradshaw

## CKCO-TV AWARD

The gift of Station CKCO-TV, Kitchener, to the best performance by a juvenile, male or female, in a play entered for competition in the WODL Festival. Juvenile is any person who has not reached their 19th birthday prior to the night on which their performance was adjudicated by the Regional Preliminary Adjudicator. To be awarded by the preliminary adjudicator or, if his selection is in a play invited to the Festival, it will be awarded by the final adjudicator.

Winner: Susan Shillingford Samia

## L. C. SMITH AWARD

The gift of Mr. and Mrs. L. C. Smith, London, for the best visual presentation of a production, having regard to the ability of the group to surmount the difficulties encountered on stages of different size and equipment.

Winner: HPG Dani Podetz

## CKCO-TV AWARD

The gift of Station CKCO-TV, Kitchener, for the director of the best-directed play.

Winner: HPG Sid Embury

## FULLER AWARD

The gift of Judge H. E. Fuller, Welland, to the group obtaining the second highest number of marks.

Winner: K-W

## DOMINION DRAMA FESTIVAL REGIONAL TROPHY

and cash prize of \$100.00 donated by the CANADIAN ASSOCIATION OF BROADCASTERS to be awarded to the group obtaining the highest number of marks.

Winner: HPG

# Play Awards

WESTERN ONTARIO PLAYWRITING SEMINAR AWARD—The gift of Mrs. C. A. Johnston, Woodstock, to be awarded Festival to Festival, to the author of an original script produced by a group in WODL. The script and a copy of a production programme should be submitted to Mr. George Buckley, Professor of English at the University of Western Ontario, or to 42 Belgrave, London, Ontario.

Winner: .....

JAMIESON AWARD—The gift of Mr. D. Park Jamieson, Sarnia, to the best production of a full-length Canadian play during the current season. The winner is chosen by the WODL Awards Committee. To be presented on the final night of the Festival.

Winner: .....

## Festival Play Directors

---

### EDMUND TAYLOR - *Sarnia Little Theatre*

Director-actor Taylor has a sound theatrical background. He has worked both with Sarnia Little Theatre and with the semi-professional summer group called the Holliday Players. He won the Radio Simcoe award in both 1961 and 1962.

### VELMA MITGES - *Owen Sound Little Theatre*

One of this group's most active workers, Mrs. Mitges has a record of acting and directorial achievements. She is a graduate of the acting and directing seminar conducted by the Department of Education and also of the director's seminar of the University of Waterloo.

### REVEREND JOHN HULLEY -

#### *The St. Thomas More Players*

Reverend Hulley is a teacher at the Cathedral Boys High School in Hamilton. He is responsible for the high quality of the Shakespearian plays produced annually by the pupils. This is Fr. Hulley's first directorial chore with the players.

### SID EMBERLEY - *The Players' Guild of Hamilton Inc.*

Veteran director Emberley spent many years directing plays for the R.A.F., in the U.K., Germany and Hong Kong. A newcomer to Canada, Emberley has won several of his own group's awards. He is executive assistant to the McMaster Chemistry Department.

### G. W. (BILL) KOSKI and ALAN MURRAY

#### *K.-W. Little Theatre*

Bill Koski is a busy man. He's President of his group, was co-director and co-producer of *Bousille* and the *Just* and also plays a leading role. He's directed a number of other major productions. Alan Murray, co-producer, co-director, and Mr. Fontaine in the K-W production is another of those triple-threat men. He has a background in the Scottish theatre, directs a number of outside productions and acts as producer for all K-W productions.



# Dominion Drama Festival

Western Ontario Region

---

## Festival Committee

<i>Chairman</i>	-	-	-	-	-	-	Thomas Naylor
<i>Deputy Chairman and Treasurer</i>	-	-	-	-	-	-	Roy Growcott
<i>Secretary</i>	-	-	-	-	-	-	William Swan
<i>Tickets</i>	-	-	-	-	-	-	Mrs. John H. Kennedy
<i>Hospitality</i>	-	-	-	-	-	-	Mrs. Robert R. Smith, William McKinlay
<i>House Manager</i>	-	-	-	-	-	-	David Griffiths
<i>Stage Manager</i>	-	-	-	-	-	-	Edwin Bennett
<i>Prizes</i>	-	-	-	-	-	-	Mrs. Dominic Smith
<i>Registration and Accommodation</i>	-	-	-	-	-	-	Mrs. Ralph Hotson
<i>Decor design</i>	-	-	-	-	-	-	Raymond Joyall
<i>Publicity</i>	-	-	-	-	-	-	Wally Hulme, William Swan, Bill Whiting

## Acknowledgements

The Festival Committee acknowledges with deep gratitude, the contributions made to the success of this Festival by over 100 members of Woodstock Little Theatre and 32 business firms.

The whole-hearted support of the Woodstock Chamber of Commerce was of major assistance to the committee.

SPECIAL ACKNOWLEDGEMENT IS MADE OF THE GENEROSITY OF ROTHMANS OF PALL MALL CANADA LIMITED WHO CREATED AND PRINTED THIS SOUVENIR PROGRAMME.

# W.O.D.L. Executive Officers

<i>Honorary Life President</i>	-	-	-	-	-	F. N. Phelps
<i>Immediate Past President</i>	-	-	-	-	-	F. C. B. Hall
<i>President</i>	-	-	-	-	-	Mrs. A. W. Winter
<i>1st. Vice-President</i>	-	-	-	-	-	E. B. Devitt
<i>2nd. Vice-President</i>	-	-	-	-	-	Bruce Sully
<i>Secretary</i>	-	-	-	-	-	Mrs. Myrna Rutherford
<i>Treasurer</i>	-	-	-	-	-	A. W. Winter
<i>Festival Chairman</i>	-	-	-	-	-	Thomas Naylor
<i>Chairman, Public Relations</i>	-	-	-	-	-	William Whiting
<i>Education</i>	-	-	-	-	-	Miss Elsie Thomson
<i>Adjudication</i>	-	-	-	-	-	Frank Daniels
<i>Awards</i>	-	-	-	-	-	E. B. Devitt

## District Vice-Presidents

<i>District No. 1</i>	-	-	-	-	-	John Hill
<i>District No. 2</i>	-	-	-	-	-	Wally Duffield
<i>District No. 3</i>	-	-	-	-	-	Mrs. W. J. Wilson
<i>District No. 4</i>	-	-	-	-	-	Mrs. G. H. Miles

## Advisory Board

Miss Thelma Mitcham	Mrs. A. E. Fort
Miss Elsie Thomson	William Kelly
W. K. V. Smith	Charles Tuck
Mrs. L. C. Smith	Prof. R. Ozburn
John Brook	Mrs. H. Berch
Major I. W. Hill	

## Board of Directors

James Benton	Miss Peggy Johnston
Denis Stephenson	Rowland Hill
Mrs. R. R. Smith	Harry Tracey



# *Dominion Drama Festival*



The 1965 Finals Festival will be held  
in Brockville, Ont. . . . May 24 - 29

---

■ We extend to you a cordial invitation to  
be with us for this colorful and exciting  
event. Please mail your requests for tickets  
and accommodation application forms to:

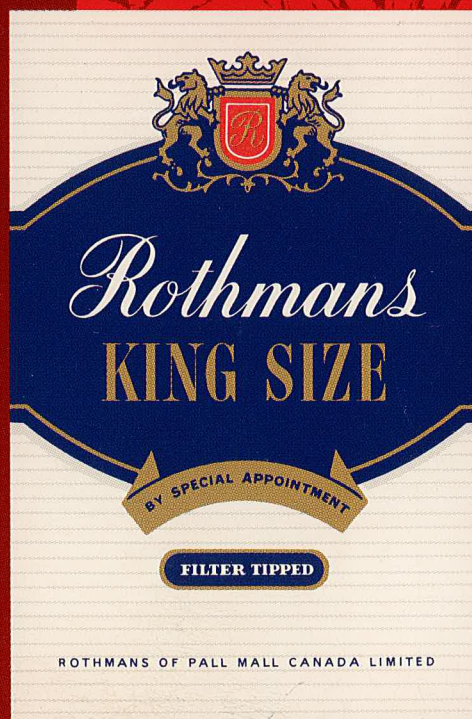
Dominion Drama Festival  
P.O. Box 218  
Brockville, Ontario

J. R. Radford - *Chairman*    P. J. Errington - *Co-Chairman*  
*Finals Festival Committee*

*Rothmans*

THE GREATEST NAME

IN CIGARETTES



ROTHMANS OF PALL MALL CANADA LIMITED