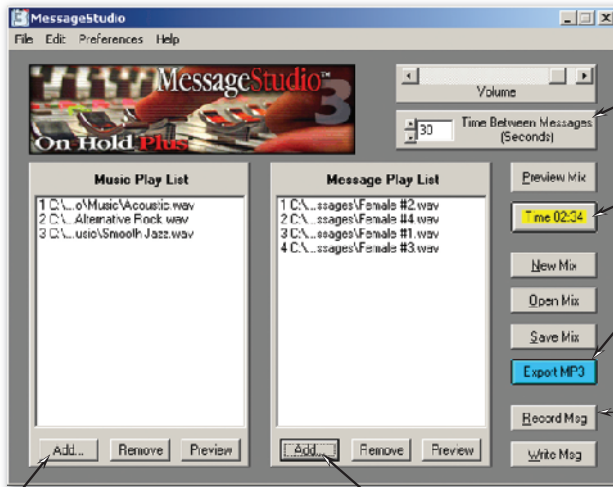


# MessageStudio Quick Start Guide

## MessageStudio Software

Launch the MessageStudio software and follow these simple steps...your on-hold production will be done in minutes!



- 1 Add your choice of background music
- 2 Add your choice of messages

- 3 Choose the time interval between messages

Calculates the length of your production so you don't exceed your player's memory.

- 4 Click "Export MP3" to save the mix to the OHP 6000. Use the MP3 ID Info to save a track name and a company name.



**IMPORTANT**  
Recording will not work unless you have chosen "Microphone" as the recording source in your sound card's control panel and the recording input volume level is turned up.

Click here to record a message in your own voice. All you need is a PC mic plugged into the "MIC IN" jack of your PC's sound card.



Click on "Apply" when finished

Double click on the **MUSIC** selections that you would like to have in the background of your on-hold audio production.



Click on "Apply" when finished

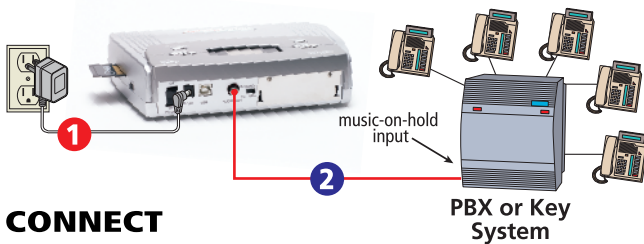
Double click on the **MESSAGE** selections that you would like to play.

### Need more info?

For a complete operation manual and connection diagrams for other configurations, please see the User Manuals (in PDF format) on your Hard Drive in the MessageStudio directory.

## External Digital Player/Recorder

### CONNECTION FOR PLAYBACK



#### CONNECT

- 1 Plug the AC adapter into a 110V power outlet and connect the other end to the 9V jack.
- 2 Plug Audio Cable to "PLAYBACK OUT" jack and the other end into PBX or Key phone system's "music-on-hold" input (unit may also be connected to an on-hold adapter).

#### PLAYBACK

- 1 To begin playback, press the "POWER" switch to "ON".
  - 2 To hear playback, press and hold "PREVIEW" button on top of player.
- NOTE:** "IMPEDANCE" switch should be set to "8Ω" position.

#### TEST & ADJUST

- 1 Set volume control to halfway point.
- 2 From phone closest to player, call in and place yourself on-hold.
- 3 Fine-tune volume level to your liking.

### CONNECTION FOR RECORDING



#### CONNECT

- 1 Connect AC adapter from wall outlet into jack marked "DC9V".
  - 2 Connect one end of the USB cable to the OHP 6000's USB port then connect the other end to the USB port of your PC.
  - 3 Turn the unit on. It will show up on your PC as a Removable Disk (usually E:).
- NOTE:** On Windows 2000 or older, you'll need to install the OHP 6000 USB drivers.

#### RECORDING

- 1 Construct your on-hold production on your PC using the MessageStudio Software. **IMPORTANT:** Make sure that your production does not exceed the time capacity of your unit's digital memory or Smart Media Card (if applicable).
- 2 Click "Export MP3", navigate to the Removable Disk (OHP 6000) and give the file a name. You will then be prompted to fill in a track name and company name for the MP3 File ID Info. **NOTE:** Be sure to name your track as you would like it to appear on the OHP 6000's LCD display.
- 3 Eject the Removable Disk (OHP 6000) by right-clicking on it's icon and choosing "eject" or by clicking on the "eject removable disk" icon in the Windows task bar.
- 4 The OHP 6000 will play your MP3's automatically once it has been disconnected from the PC. Use the "select" buttons on the front of the unit to select your tracks.